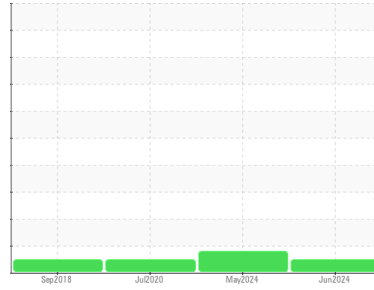




OIL ANALYSIS REPORT

Sample Rating Trend



NORMAL



Area

[1001155793]

Machine Id

BOEING 737-800 C-GLRN BOEING 737-800 B-SYSTEM (S/N 41353)

Component

B Hydraulic System

Fluid

SKYDROL LD-4 (--- GAL)

DIAGNOSIS

Recommendation

Resample at the next service interval to monitor.
NOTE: Please provide information regarding reservoir capacity, filter type and micron rating with next sample.

Wear

All component wear rates are normal.

Contamination

The water content is negligible. There is no indication of any contamination in the oil. The system and fluid cleanliness is acceptable.

Fluid Condition

The AN level is acceptable for this fluid. The condition of the oil is suitable for further service.

SAMPLE INFORMATION

	method	limit/base	current	history1	history2
Sample Number	Client Info		WC0760751	WC0881042	WC0439704
Sample Date	Client Info		13 Jun 2024	28 May 2024	30 Jul 2020
Machine Age	hrs	Client Info	0	0	0
Oil Age	hrs	Client Info	0	0	0
Oil Changed	Client Info		N/A	N/A	N/A
Sample Status			NORMAL	ABNORMAL	NORMAL

WEAR METALS

	method	limit/base	current	history1	history2
Iron	ppm	ASTM D5185(m) >20	2	3	3
Chromium	ppm	ASTM D5185(m) >10	<1	<1	<1
Nickel	ppm	ASTM D5185(m) >10	<1	<1	<1
Titanium	ppm	ASTM D5185(m)	0	0	0
Silver	ppm	ASTM D5185(m)	0	0	0
Aluminum	ppm	ASTM D5185(m) >10	<1	<1	<1
Lead	ppm	ASTM D5185(m) >20	0	0	0
Copper	ppm	ASTM D5185(m) >20	6	9	5
Tin	ppm	ASTM D5185(m) >10	0	0	<1
Antimony	ppm	ASTM D5185(m)	<1	0	0
Vanadium	ppm	ASTM D5185(m)	0	0	0
Beryllium	ppm	ASTM D5185(m)	0	0	0
Cadmium	ppm	ASTM D5185(m)	13	21	6

ADDITIVES

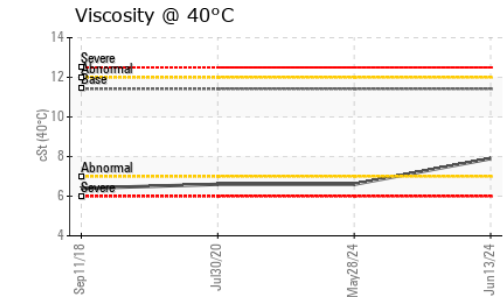
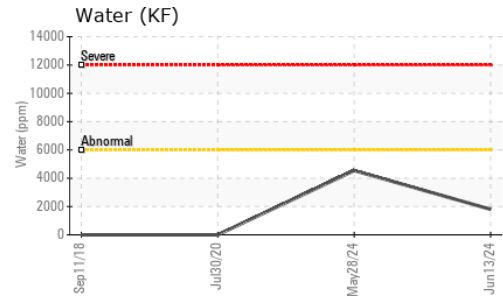
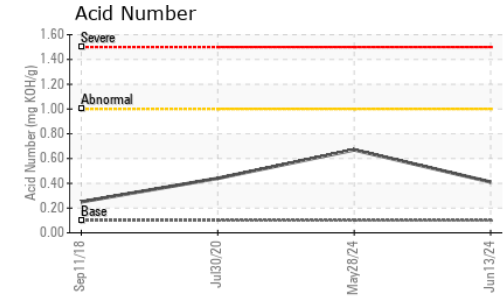
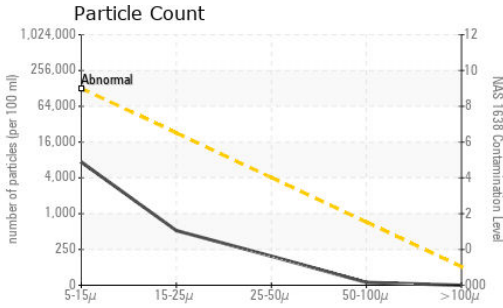
	method	limit/base	current	history1	history2
Boron	ppm	ASTM D5185(m) 0	3	6	2
Barium	ppm	ASTM D5185(m) 0	0	0	0
Molybdenum	ppm	ASTM D5185(m) 0	0	0	0
Manganese	ppm	ASTM D5185(m)	0	0	0
Magnesium	ppm	ASTM D5185(m) 0	0	<1	<1
Calcium	ppm	ASTM D5185(m) 0	18	6	8
Phosphorus	ppm	ASTM D5185(m) 20000	44146	42156	35424
Zinc	ppm	ASTM D5185(m) 0	4	5	2
Sulfur	ppm	ASTM D5185(m) 1900	976	1506	1534
Lithium	ppm	ASTM D5185(m)	<1	<1	<1

CONTAMINANTS

	method	limit/base	current	history1	history2
Silicon	ppm	ASTM D5185(m) >15	2	2	7
Sodium	ppm	ASTM D5185(m)	6	4	<1
Potassium	ppm	ASTM D5185(m) >20	24	20	25
Water	%	ASTM D6304* >0.6	0.180	0.454	---
ppm Water	ppm	ASTM D6304* >6000	1802	4541	---



OIL ANALYSIS REPORT



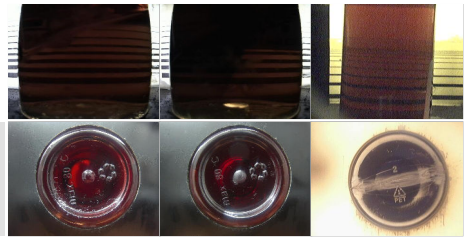
FLUID CLEANLINESS	method	limit/base	current	history1	history2
Particles >4µm	ASTM D7647		---	---	---
Particles >6µm	ASTM D7647	>128000	---	---	---
Particles >14µm	ASTM D7647	>22800	---	---	---
Particles >21µm	ASTM D7647	>4050	---	---	---
Particles >38µm	ASTM D7647	>720	---	---	---
Particles >71µm	ASTM D7647	>128	---	---	---
Oil Cleanliness	ISO 4406 (c)	>9	---	---	---
Particles 5-15µm	count	NAS 1638 >128000	7381	23638	12906
Particles 15-25µm	count	NAS 1638 >22800	520	9543	543
Particles 25-50µm	count	NAS 1638 >4050	193	▲ 8749	390
Particles 50-100µm	count	NAS 1638 >720	20	▲ 1347	60
Particles >100µm	count	NAS 1638 >128	0	57	30
NAS 1638	Class	NAS 1638 >9	5	11	7

FLUID DEGRADATION	method	limit/base	current	history1	history2
Acid Number (AN)	mg KOH/g	ASTM D974* 0.10	0.41	0.67	0.44

VISUAL	method	limit/base	current	history1	history2
White Metal	scalar	Visual*	NONE	NONE	NONE
Yellow Metal	scalar	Visual*	NONE	NONE	NONE
Precipitate	scalar	Visual*	NONE	NONE	NONE
Silt	scalar	Visual*	NONE	NONE	NONE
Debris	scalar	Visual*	NONE	VLITE	NONE
Sand/Dirt	scalar	Visual*	NONE	NONE	NONE
Appearance	scalar	Visual*	NORML	NORML	NORML
Odor	scalar	Visual*	NORML	NORML	NORML
Emulsified Water	scalar	Visual*	>0.6	NEG	NEG
Free Water	scalar	Visual*		NEG	NEG

FLUID PROPERTIES	method	limit/base	current	history1	history2
Visc @ 40°C	cSt	ASTM D7279(m) 11.42	7.9	6.6	6.6

SAMPLE IMAGES	method	limit/base	current	history1	history2
Color					
Bottom					



Laboratory : WearCheck - C8-1175 Appleby Line, Burlington, ON L7L 5H9
Sample No. : WC0760751 **Received** : 14 Jun 2024
Lab Number : **02642192** **Tested** : 19 Jun 2024
Unique Number : 5799731 **Diagnosed** : 19 Jun 2024 - Kevin Marson
Test Package : IND 2 (Additional Tests: KF, PrtCount, TAN Man)

To discuss this sample report, contact Customer Service at 1-800-268-2131.
 Test denoted (*) outside scope of accreditation, (m) method modified, (e) tested at external lab.
 Validity of results and interpretation are based on the sample and information as supplied.

SUNWING AIRLINES
 44 FASKEN DRIVE, UNIT 12/13
 ETOBICOKE, ON
 CA M9W 5M8
 Contact: Geoff Carroll
 gcarroll@flysunwing.com
 T: (416)802-9643
 F: (416)640-1595