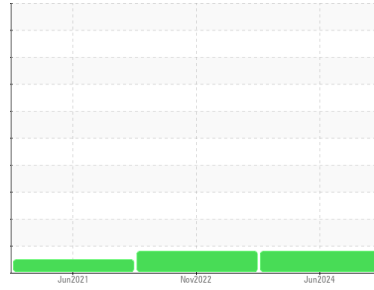


COOLANT REPORT

Sample Rating Trend



WEAR



Area
WAJAX [6100287098]
Machine Id
MTU 5362003457 GEN B
Component
Coolant
Fluid
DETROIT DIESEL POWER COOL (--- LTR)

DIAGNOSIS

▲ Recommendation

We recommend drain system, and refill with 50/50 antifreeze water mixture. We advise that you replenish the supplemental coolant additives (SCAs) and add per manufacturer's specifications. We recommend an early resample to monitor this condition.

▲ Corrosion

The iron level is high indicating rust in the system which clogs the cooling system.

Contaminants

There is no indication of any contamination in the coolant.

Coolant Condition

The pH level of this fluid is within the acceptable limits. The reserve alkalinity of this fluid is acceptable.

SAMPLE INFORMATION		method	limit/base	current	history1	history2
Sample Number	Client Info			WA0018428	WA0012723	WA0015312
Sample Date	Client Info			11 Jun 2024	07 Nov 2022	23 Jun 2021
Machine Age	hrs	Client Info		0	604	500
Oil Age	hrs	Client Info		0	0	25
Oil Changed	Client Info			N/A	Not Changd	Not Changd
Sample Status				ABNORMAL	ABNORMAL	NORMAL

PHYSICAL TEST RESULTS		method	limit/base	current	history1	history2
Glycol Type	FT-IR			UNK	---	---
Specific Gravity	ASTM D1298*			1.068	1.067	1.067
pH	Scale 0-14	ASTM D1287*	9.5	8.80	8.87	9.17
Nitrites	ppm	Alcan Test Kit*	500	880	1600	1680
Reserve Alkalinity	Scale 0-20	ASTM D1121*		5.5	3.9	3.3
Percentage Glycol	%	ASTM D3321*	50	50.8	50.0	50.0
Freezing Point	°C	ASTM D3321*	-40	-37	-35	-37
Carboxylate				---	---	---

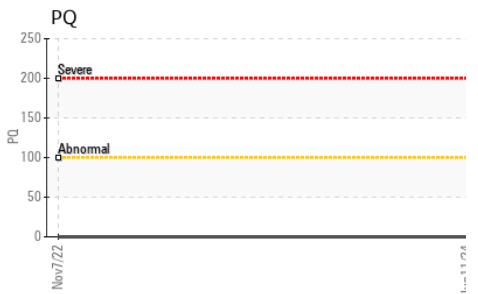
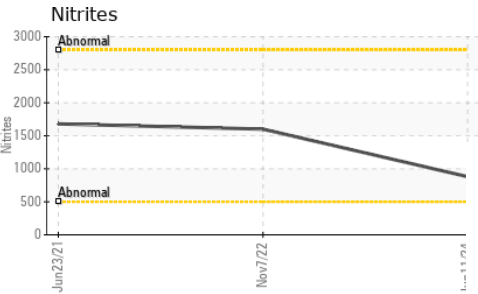
CORROSION INHIBITORS		method	limit/base	current	history1	history2
Silicon	ppm	ASTM D5185(m)	150	45	57	44
Phosphorus	ppm	ASTM D5185(m)	0	26	25	28
Boron	ppm	ASTM D5185(m)	300	295	337	295
Molybdenum	ppm	ASTM D5185(m)		2	3	1

CORROSION		method	limit/base	current	history1	history2
Iron	ppm	ASTM D5185(m)	>15	▲ 16	▲ 20	9
Aluminum	ppm	ASTM D5185(m)	>10	0	<1	<1
Copper	ppm	ASTM D5185(m)	>10	0	2	<1
Lead	ppm	ASTM D5185(m)	>10	0	<1	1
Tin	ppm	ASTM D5185(m)	>10	0	0	<1
Silver	ppm	ASTM D5185(m)	>10	<1	1	0
Zinc	ppm	ASTM D5185(m)		<1	2	<1

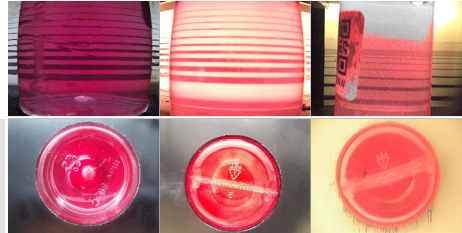
CARRIER SALTS		method	limit/base	current	history1	history2
Sodium	ppm	ASTM D5185(m)		2191	1915	1694
Potassium	ppm	ASTM D5185(m)		30	23	21

SCALE POTENTIAL		method	limit/base	current	history1	history2
Calcium	ppm	ASTM D5185(m)	>100	<1	5	2
Magnesium	ppm	ASTM D5185(m)	>40	<1	1	<1
Hardness	mg/L CaCO3	In-house*	<75	3	17	---

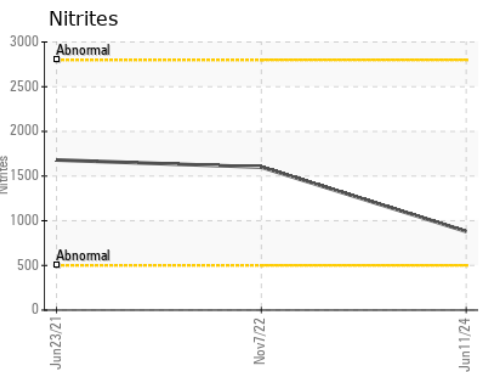
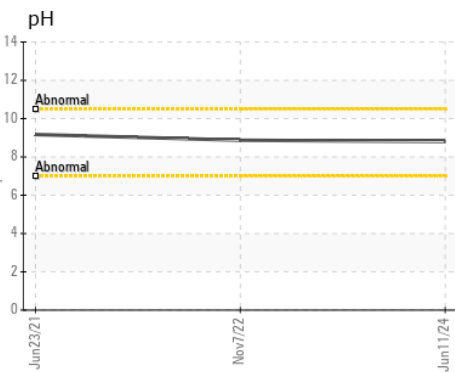
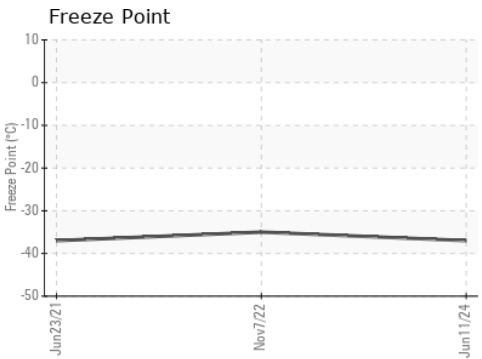
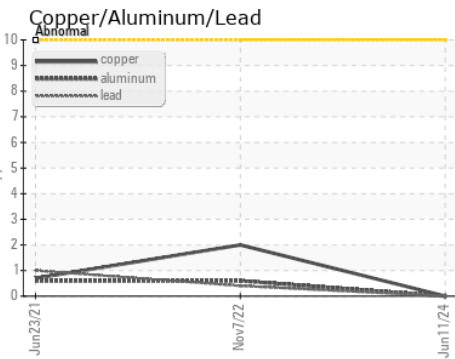
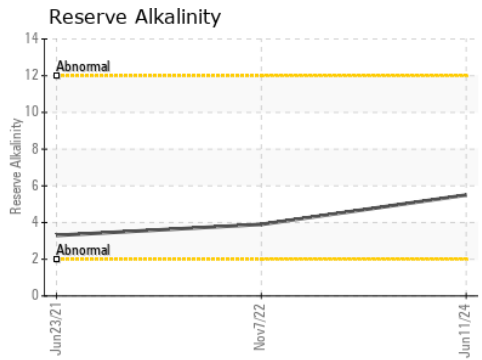
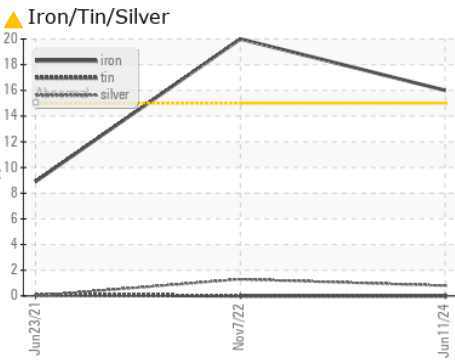
COOLANT REPORT



VISUAL	method	limit/base	current	history1	history2
Coolant Color	Visual*	Pink	Pink	Pink	Pink
Coolant Appearance	Visual*	Clear	Clear	Clear	Clear
Color					
Bottom					



GRAPHS



Laboratory : WearCheck - C8-1175 Appleby Line, Burlington, ON L7L 5H9
Sample No. : WA0018428 **Received** : 17 Jun 2024
Lab Number : **02642424** **Tested** : 21 Jun 2024
Unique Number : 5799963 **Diagnosed** : 21 Jun 2024 - Kevin Marson
Test Package : COOL (Additional Tests: GlycolType, PQ)

Wajax Power Systems
 70 Raddall Avenue
 Dartmouth, NS
 CA B3B 1T7
 Contact: Danelle Hoffman
 dhoffman@wajax.com
 T: (902)468-6200
 F: (902)468-3325

To discuss this sample report, contact Customer Service at 1-800-268-2131.
 Test denoted (*) outside scope of accreditation, (m) method modified, (e) tested at external lab.
 Validity of results and interpretation are based on the sample and information as supplied.