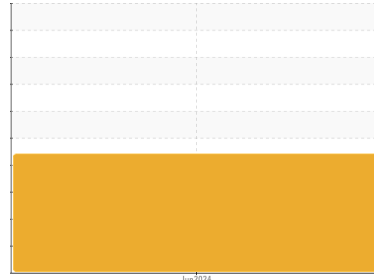


# FUEL REPORT

Sample Rating Trend



**WATER**



Area  
**[6100302919]**

Machine Id  
**LOUTEC**

Component  
**Diesel Fuel**

Fluid  
**No.2 DIESEL FUEL (ULTRALOW SULPHUR) (--- GAL)**

## DIAGNOSIS

### ▲ Recommendation

This is a baseline read-out on the submitted sample.

### ▲ Contaminants

The diesel fuel contains >80% gasoline.

### ▲ Fuel Condition

Pensky-Martens Flash Point is severely low. 20% Distill Point results are abnormally low. 50% Distill Point results are abnormally low. 90% Distill Point and cetane index results are abnormally low.

SAMPLE INFORMATION		method	limit/base	current	history1	history2
Sample Number	Client Info			<b>WA0021408</b>	---	---
Sample Date	Client Info			<b>13 Jun 2024</b>	---	---
Machine Age	hrs	Client Info		<b>0</b>	---	---
Sample Status				<b>SEVERE</b>	---	---

PHYSICAL PROPERTIES		method	limit/base	current	history1	history2
Specific Gravity		ASTM D1298*	0.839	▲ <b>0.774</b>	---	---
Fuel Color	text	Visual Screen*	Yllow	<b>Yllow</b>	---	---
Pensky-Martens Flash Point	°C	ASTM D7215*	52	▲ <b>-26.7</b>	---	---

DISTILLATION		method	limit/base	current	history1	history2
Initial Boiling Point	°C	ASTM D2887*	165	<b>53</b>	---	---
5% Distillation Point	°C	ASTM D2887*		<b>66</b>	---	---
10% Distill Point	°C	ASTM D2887*	201	<b>81</b>	---	---
15% Distillation Point	°C	ASTM D2887*		<b>93</b>	---	---
20% Distill Point	°C	ASTM D2887*	216	▲ <b>105</b>	---	---
30% Distill Point	°C	ASTM D2887*	230	<b>129</b>	---	---
40% Distill Point	°C	ASTM D2887*	243	<b>153</b>	---	---
50% Distill Point	°C	ASTM D2887*	255	▲ <b>177</b>	---	---
60% Distill Point	°C	ASTM D2887*	267	<b>201</b>	---	---
70% Distill Point	°C	ASTM D2887*	280	<b>224</b>	---	---
80% Distill Point	°C	ASTM D2887*	295	<b>252</b>	---	---
85% Distillation Point	°C	ASTM D2887*		<b>269</b>	---	---
90% Distill Point	°C	ASTM D2887*	310	<b>286</b>	---	---
95% Distillation Point	°C	ASTM D2887*		<b>312</b>	---	---
Final Boiling Point	°C	ASTM D2887*	341	<b>352</b>	---	---

IGNITION QUALITY		method	limit/base	current	history1	history2
API Gravity		ASTM D1298*	37.7	<b>51</b>	---	---
Cetane Index		ASTM D4737*	<40.0	<b>48</b>	---	---

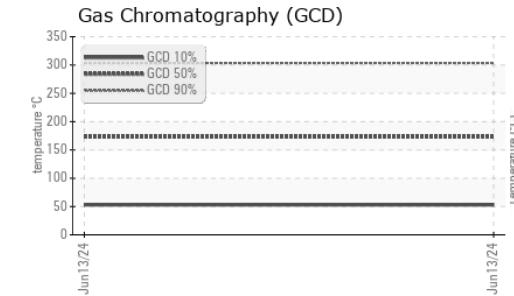
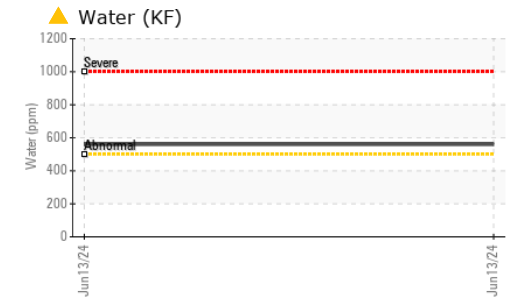
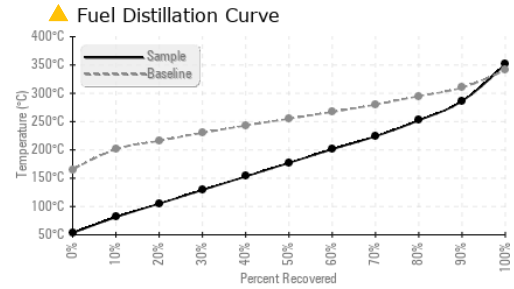
CONTAMINANTS		method	limit/base	current	history1	history2
Water	%	ASTM D6304*	<0.05	▲ <b>0.055</b>	---	---
ppm Water	ppm	ASTM D6304*	<500	▲ <b>560</b>	---	---

MICROBIAL		method	limit/base	current	history1	history2
Bacteria	CFU/ml	ASTM D6469*	>=100000	<b>0</b>	---	---
Yeast	CFU/ml	ASTM D6469*	>=100000	<b>0</b>	---	---
Mold	Colonies	ASTM D6469*	MODER	<b>NONE</b>	---	---

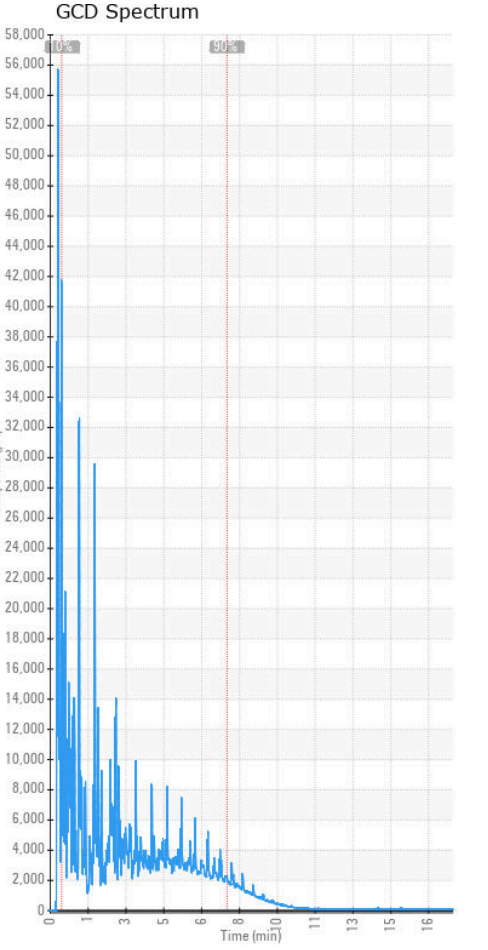
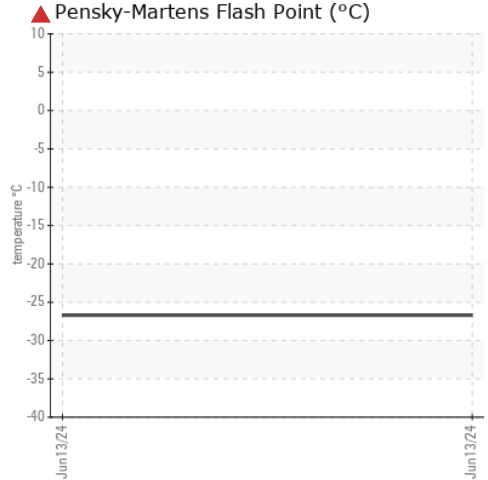
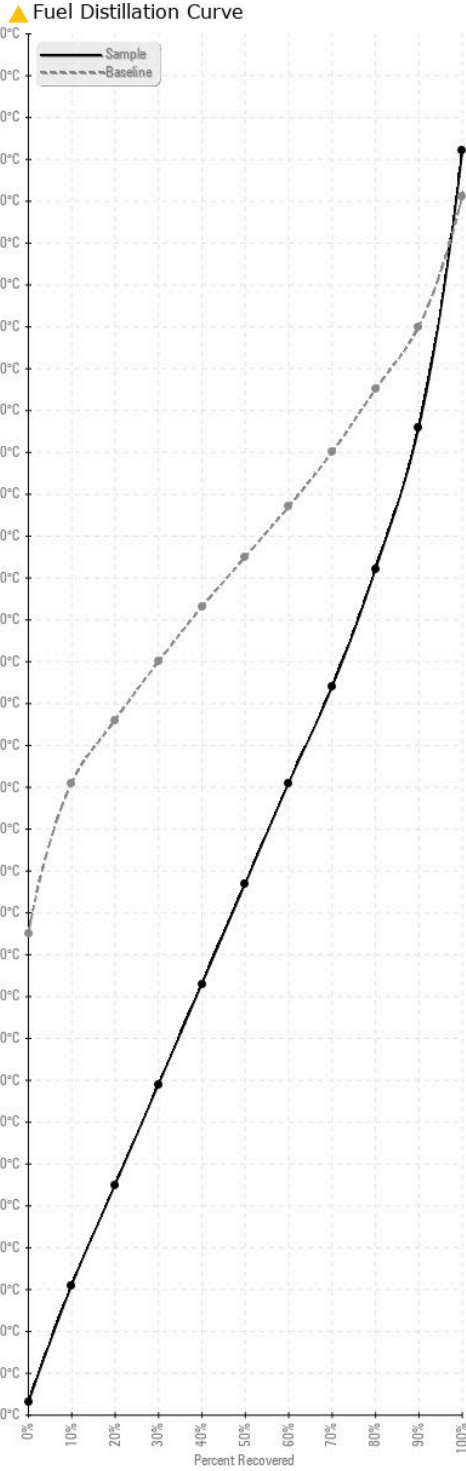
## SAMPLE IMAGES

		method	limit/base	current	history1	history2
Color					no image	no image
Bottom					no image	no image

# FUEL REPORT



## GRAPHS



**Laboratory** : WearCheck - C8-1175 Appleby Line, Burlington, ON L7L 5H9  
**Sample No.** : WA0021408  
**Lab Number** : 02642434  
**Unique Number** : 5799973  
**Test Package** : TEST ( Additional Tests: API, Bacteria, CC Flash, Cetane, Fuel, GCD, KF, Spat

**Wajax Limited**  
 2997 AV. WATT  
 Quebec, QC  
 CA G1X 3W1  
 Contact: Steve Racine  
 sracine@wajax.com

To discuss this sample report, contact Customer Service at 1-800-268-2131.  
 Test denoted (\*) outside scope of accreditation, (m) method modified, (e) tested at external lab.  
 Validity of results and interpretation are based on the sample and information as supplied.

T:  
 F: (418)651-4448