

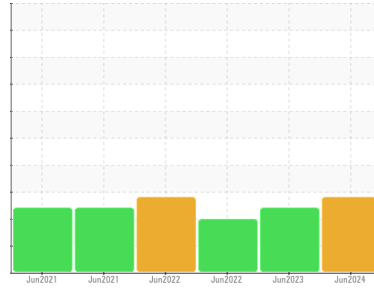


# OIL ANALYSIS REPORT



Area  
**MAXI- PAYSAGE INC [02642444]**  
 Machine Id  
**CATERPILLAR 308-7 CAT00308LGG800233**  
 Component  
**Hydraulic System**  
 Fluid  
**PANOLIN HLP SYNTH 46 (110 LTR)**

Sample Rating Trend



**WATER**



## DIAGNOSIS

### Recommendation

Nous vous recommandons de vérifier la source de l'infiltration d'eau. Nous recommandons le remplacement des filtres de ce composant. Nous vous recommandons d'échantillonner de nouveau dès que possible afin de contrôler la situation.

### Wear

Les taux d'usure de tous les composants sont normaux.

### Contamination

Il y a une quantité modérée de particules (de 4 à 14 microns) dans l'huile. Il y a une faible concentration (<5.0%) d'huile minérale présente dans le fluide. Concentration modérée d'eau dans l'huile. La propreté du système est supérieure à la limite acceptable pour votre objectif de propreté ISO 4406.

### Fluid Condition

Le AN est acceptable pour ce fluide. l'huile peut encore servir si la contamination peut être réduite à un niveau acceptable.

## SAMPLE INFORMATION

method	limit/base	current	history1	history2
Sample Number	Client Info	<b>WC</b>	WC	WC
Sample Date	Client Info	<b>13 Jun 2024</b>	29 Jun 2023	20 Jun 2022
Machine Age	hrs Client Info	<b>5073</b>	4024	3110
Oil Age	hrs Client Info	<b>0</b>	0	0
Oil Changed	Client Info	<b>N/A</b>	N/A	N/A
Sample Status		<b>ABNORMAL</b>	ABNORMAL	SEVERE

## WEAR METALS

method	limit/base	current	history1	history2
Iron ppm ASTM D5185(m)	>20	<b>11</b>	5	2
Chromium ppm ASTM D5185(m)	>10	<b>1</b>	<1	0
Nickel ppm ASTM D5185(m)	>10	<b>&lt;1</b>	0	0
Titanium ppm ASTM D5185(m)		<b>0</b>	0	0
Silver ppm ASTM D5185(m)		<b>0</b>	0	0
Aluminum ppm ASTM D5185(m)	>10	<b>&lt;1</b>	<1	<1
Lead ppm ASTM D5185(m)	>10	<b>0</b>	0	0
Copper ppm ASTM D5185(m)	>75	<b>4</b>	3	<1
Tin ppm ASTM D5185(m)	>10	<b>0</b>	0	<1
Antimony ppm ASTM D5185(m)		<b>0</b>	0	0
Vanadium ppm ASTM D5185(m)		<b>0</b>	0	0
Beryllium ppm ASTM D5185(m)		<b>0</b>	0	0
Cadmium ppm ASTM D5185(m)		<b>0</b>	0	0

## ADDITIVES

method	limit/base	current	history1	history2
Boron ppm ASTM D5185(m)	0	<b>1</b>	<1	1
Barium ppm ASTM D5185(m)	0	<b>0</b>	0	0
Molybdenum ppm ASTM D5185(m)	0	<b>0</b>	<1	<1
Manganese ppm ASTM D5185(m)	0	<b>&lt;1</b>	0	0
Magnesium ppm ASTM D5185(m)	0	<b>2</b>	3	2
Calcium ppm ASTM D5185(m)	0	<b>5</b>	8	9
Phosphorus ppm ASTM D5185(m)	1700	<b>1362</b>	1430	1581
Zinc ppm ASTM D5185(m)	0	<b>63</b>	42	19
Sulfur ppm ASTM D5185(m)	1350	<b>1413</b>	1376	1369
Lithium ppm ASTM D5185(m)		<b>&lt;1</b>	<1	<1

## CONTAMINANTS

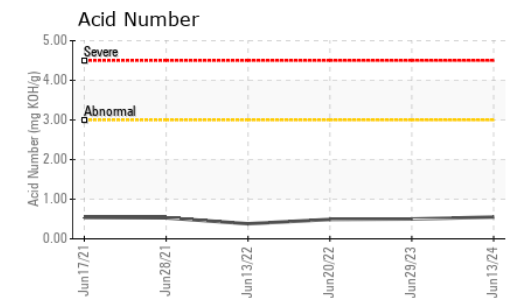
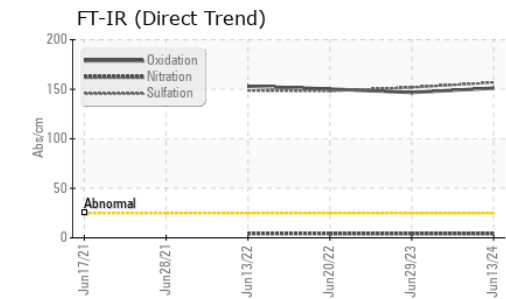
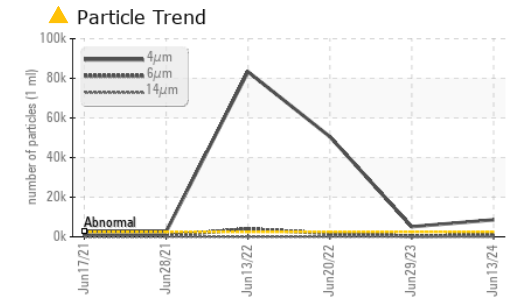
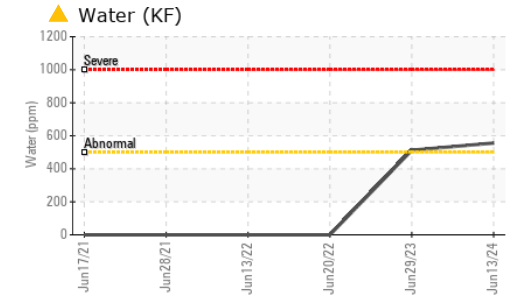
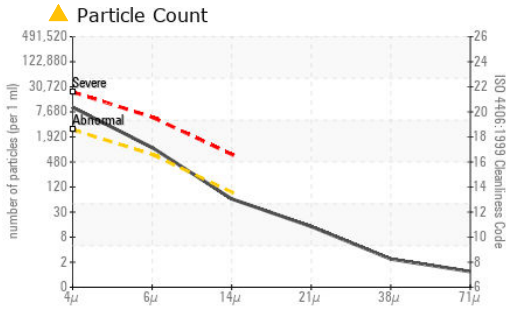
method	limit/base	current	history1	history2
Silicon ppm ASTM D5185(m)	>20	<b>2</b>	1	1
Sodium ppm ASTM D5185(m)		<b>1</b>	<1	<1
Potassium ppm ASTM D5185(m)	>20	<b>&lt;1</b>	<1	0
Water % ASTM D6304*	>0.05	<b>▲ 0.055</b>	▲ 0.051	---
ppm Water ppm ASTM D6304*	>500	<b>▲ 556</b>	▲ 512.2	---

## INFRA-RED

method	limit/base	current	history1	history2
Soot % ASTM D7844*		<b>0</b>	0	0
Nitration Abs/cm ASTM D7624*		<b>4.3</b>	4.3	4.3
Sulfation Abs/.1mm ASTM D7415*		<b>156.7</b>	151.9	148.1
Mineral Oil Content % ASTM D7418*	<5.0%	<b>&lt;5.0</b>	<5.0	<5.0



# OIL ANALYSIS REPORT



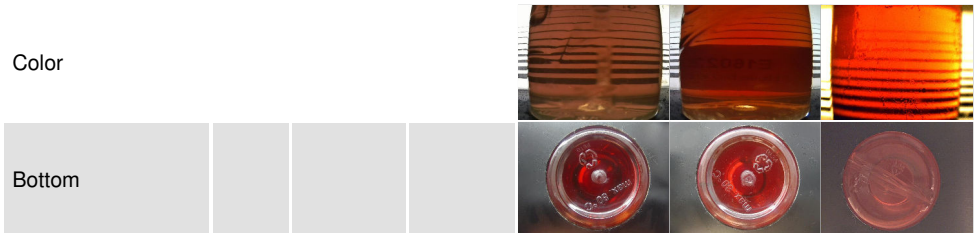
FLUID CLEANLINESS	method	limit/base	current	history1	history2
Particles >4µm	ASTM D7647	>2500	▲ 8581	▲ 5087	▲ 50519
Particles >6µm	ASTM D7647	>640	● 935	346	▲ 1659
Particles >14µm	ASTM D7647	>80	55	36	45
Particles >21µm	ASTM D7647	>20	12	12	10
Particles >38µm	ASTM D7647	>4	2	0	1
Particles >71µm	ASTM D7647	>3	1	0	0
Oil Cleanliness	ISO 4406 (c)	>18/16/13	▲ 20/17/13	▲ 20/16/12	▲ 23/18/13

FLUID DEGRADATION	method	limit/base	current	history1	history2
Oxidation	Abs./1mm	ASTM D7414*	151.1	146.7	150.2
Acid Number (AN)	mg KOH/g	ASTM D974*	0.55	0.50	0.49

VISUAL	method	limit/base	current	history1	history2
White Metal	scalar	Visual*	NONE	NONE	NONE
Yellow Metal	scalar	Visual*	NONE	NONE	NONE
Precipitate	scalar	Visual*	NONE	NONE	NONE
Silt	scalar	Visual*	NONE	NONE	NONE
Debris	scalar	Visual*	NONE	NONE	NONE
Sand/Dirt	scalar	Visual*	NONE	NONE	NONE
Appearance	scalar	Visual*	NORML	NORML	NORML
Odor	scalar	Visual*	NORML	NORML	NORML
Emulsified Water	scalar	Visual*	>0.05	NEG	NEG
Free Water	scalar	Visual*	NEG	NEG	NEG

FLUID PROPERTIES	method	limit/base	current	history1	history2
Visc @ 40°C	cSt	ASTM D7279(m)	47.0	45.5	45.8
Visc @ 100°C	cSt	ASTM D7279(m)	8.1	8.3	8.4
Viscosity Index (VI)	Scale	ASTM D2270*	146	159	161

SAMPLE IMAGES	method	limit/base	current	history1	history2
---------------	--------	------------	---------	----------	----------



**Laboratory** : WearCheck - C8-1175 Appleby Line, Burlington, ON L7L 5H9  
**Sample No.** : WC  
**Lab Number** : 02642736  
**Unique Number** : 5800275  
**Test Package** : MOB 2 ( Additional Tests: TAN Man )  
**Received** : 18 Jun 2024  
**Tested** : 19 Jun 2024  
**Diagnosed** : 24 Jun 2024 - Bill Quesnel

**Envirolin Canada**  
 520 rue Adanac  
 Quebec, QC  
 CA G1C 7B7  
 Contact: Patrick Levesque  
 patrick.levesque@envirolin.com  
 T: (418)623-1216  
 F: (418)660-8889

To discuss this sample report, contact Customer Service at 1-800-268-2131.  
 Test denoted (\*) outside scope of accreditation, (m) method modified, (e) tested at external lab.  
 Validity of results and interpretation are based on the sample and information as supplied.



# MINERAL OIL CONTENT REPORT

PASS



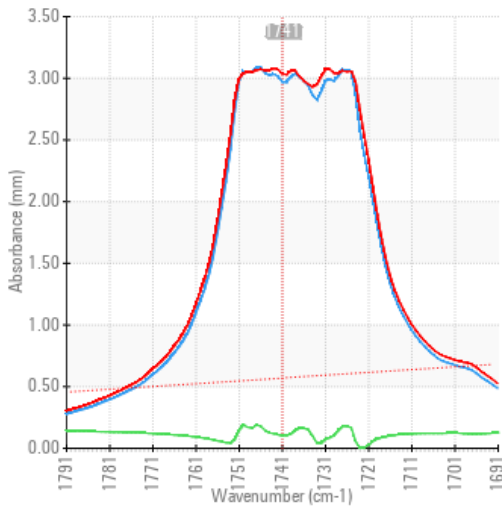
Area  
**MAXI- PAYSAGE INC [02642444]**  
 Machine Id  
**CATERPILLAR 308-7 CAT00308LGG800233**  
 Component  
**Hydraulic System**  
 Fluid  
**PANOLIN HLP SYNTH 46 (110 LTR)**



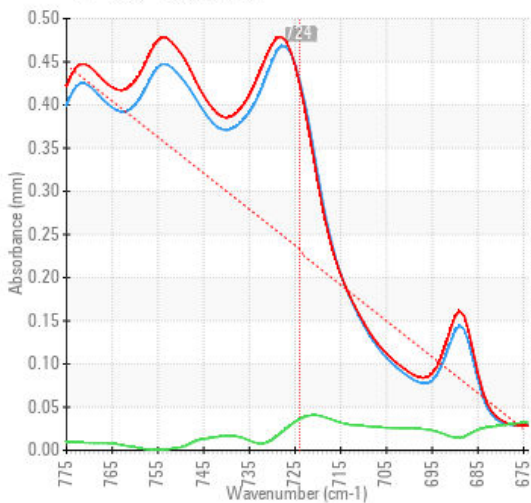
## SPECTRAL ANALYSIS

		method	limit/base	current	history1	history2
Zinc	ppm	ASTM D5185(m)	0	<b>63</b>	42	19
Mineral Oil Content	%	ASTM D7418*	<5.0%	<b>&lt;5.0</b>	<5.0	<5.0

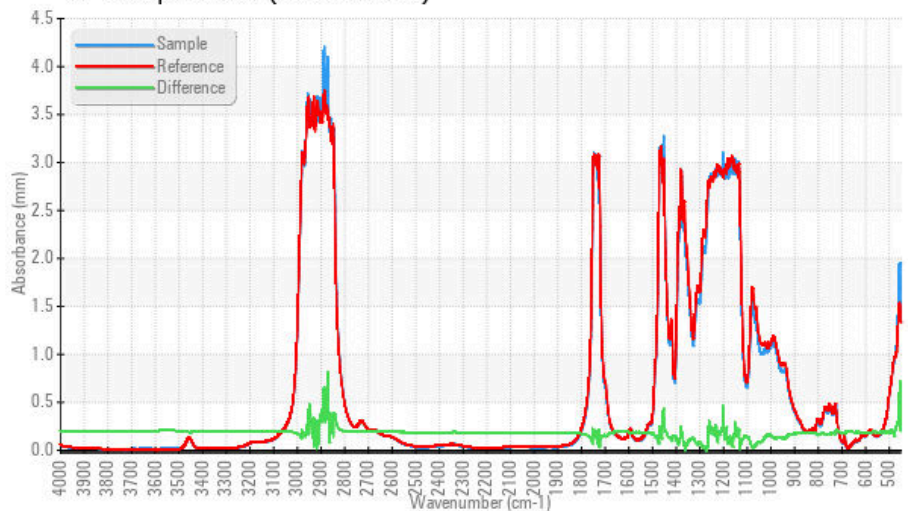
### FT-IR - Esters 1



### FT-IR - Esters II



### FT-IR Spectrum (Absorbance)



**Laboratory** : WearCheck - C8-1175 Appleby Line, Burlington, ON L7L 5H9  
**Sample No.** : WC  
**Lab Number** : 02642736  
**Unique Number** : 5800275  
**Test Package** : MOB 2 ( Additional Tests: TAN Man )  
**Received** : 18 Jun 2024  
**Tested** : 19 Jun 2024  
**Diagnosed** : 24 Jun 2024 - Bill Quesnel

To discuss this sample report, contact Customer Service at 1-800-268-2131.  
 Test denoted (\*) outside scope of accreditation, (m) method modified, (e) tested at external lab.  
 Validity of results and interpretation are based on the sample and information as supplied.

### EnviroLin Canada

520 rue Adanac  
 Quebec, QC  
 CA G1C 7B7  
 Contact: Patrick Levesque  
 patrick.levesque@envirolin.com  
 T: (418)623-1216  
 F: (418)660-8889

*This page left intentionally blank*