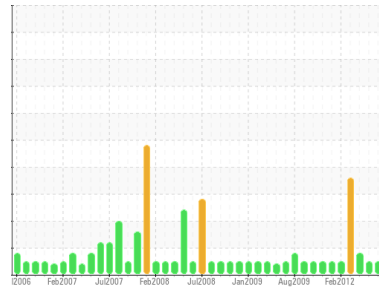




# OIL ANALYSIS REPORT

Sample Rating Trend



**NORMAL**



Area

**DIAMINE**

Machine Id

**#419 - #3 ADN Pump**

Component

**Pump**

Fluid

**ESSO TERESSTIC ISO 150 (80 GAL)**

## DIAGNOSIS

### Recommendation

Resample at the next service interval to monitor.

### Wear

All component wear rates are normal.

### Contamination

There is no indication of any contamination in the oil.

### Fluid Condition

The condition of the oil is acceptable for the time in service.

## SAMPLE INFORMATION

	method	limit/base	current	history1	history2
Sample Number	Client Info		<b>WC0811991</b>	WC831280	WC831210
Sample Date	Client Info		<b>13 Jun 2024</b>	12 Oct 2016	31 Mar 2016
Machine Age	hrs	Client Info	<b>0</b>	0	0
Oil Age	hrs	Client Info	<b>0</b>	0	0
Oil Changed	Client Info		<b>N/A</b>	N/A	N/A
Sample Status			<b>NORMAL</b>	NORMAL	ABNORMAL

## CONTAMINATION

	method	limit/base	current	history1	history2
Water	WC Method	>.1	<b>NEG</b>	NEG	NEG

## WEAR METALS

	method	limit/base	current	history1	history2
Iron	ppm	ASTM D5185(m) >90	<b>4</b>	2	3
Chromium	ppm	ASTM D5185(m) >5	<b>0</b>	0	0
Nickel	ppm	ASTM D5185(m) >5	<b>&lt;1</b>	0	<1
Titanium	ppm	ASTM D5185(m) >3	<b>0</b>	0	0
Silver	ppm	ASTM D5185(m) >3	<b>0</b>	0	0
Aluminum	ppm	ASTM D5185(m) >7	<b>&lt;1</b>	<1	<1
Lead	ppm	ASTM D5185(m) >12	<b>0</b>	<1	<1
Copper	ppm	ASTM D5185(m) >30	<b>&lt;1</b>	<1	<1
Tin	ppm	ASTM D5185(m) >9	<b>0</b>	0	0
Antimony	ppm	ASTM D5185(m)	<b>0</b>	0	0
Vanadium	ppm	ASTM D5185(m)	<b>0</b>	0	0
Beryllium	ppm	ASTM D5185(m)	<b>0</b>	0	0
Cadmium	ppm	ASTM D5185(m)	<b>0</b>	0	0

## ADDITIVES

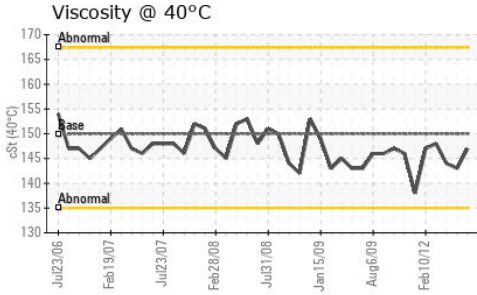
	method	limit/base	current	history1	history2
Boron	ppm	ASTM D5185(m) 0	<b>&lt;1</b>	<1	0
Barium	ppm	ASTM D5185(m)	<b>0</b>	0	0
Molybdenum	ppm	ASTM D5185(m) 0	<b>0</b>	0	0
Manganese	ppm	ASTM D5185(m)	<b>0</b>	0	0
Magnesium	ppm	ASTM D5185(m) 0	<b>&lt;1</b>	0	0
Calcium	ppm	ASTM D5185(m) 1.3	<b>1</b>	<1	2
Phosphorus	ppm	ASTM D5185(m) 0	<b>17</b>	12	11
Zinc	ppm	ASTM D5185(m) 0	<b>4</b>	2	3
Sulfur	ppm	ASTM D5185(m)	<b>2999</b>	3695	3733
Lithium	ppm	ASTM D5185(m)	<b>&lt;1</b>	<1	<1

## CONTAMINANTS

	method	limit/base	current	history1	history2
Silicon	ppm	ASTM D5185(m) >60	<b>&lt;1</b>	1	1
Sodium	ppm	ASTM D5185(m)	<b>0</b>	<1	<1
Potassium	ppm	ASTM D5185(m) >20	<b>0</b>	0	0



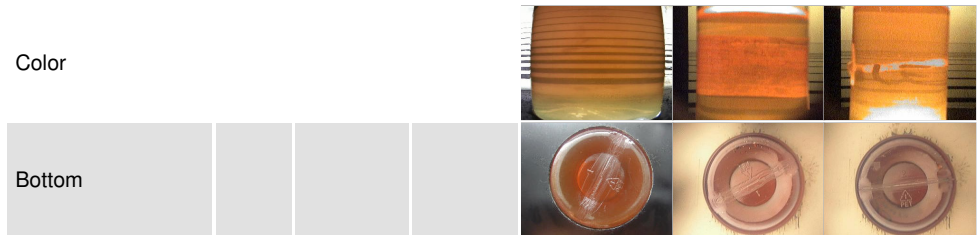
# OIL ANALYSIS REPORT



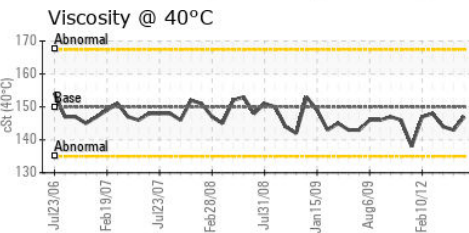
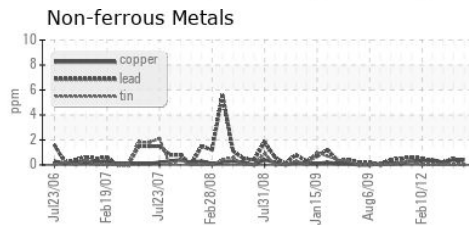
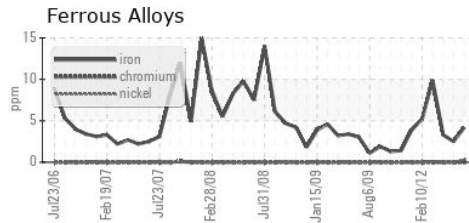
VISUAL	method	limit/base	current	history1	history2
White Metal	scalar	Visual*	NONE	NONE	NONE
Yellow Metal	scalar	Visual*	NONE	NONE	NONE
Precipitate	scalar	Visual*	NONE	NONE	NONE
Silt	scalar	Visual*	NONE	NONE	NONE
Debris	scalar	Visual*	NONE	VLITE	LIGHT
Sand/Dirt	scalar	Visual*	NONE	NONE	NONE
Appearance	scalar	Visual*	NORML	NORML	NORML
Odor	scalar	Visual*	NORML	NORML	NORML
Emulsified Water	scalar	Visual*	>.1	NEG	NEG
Free Water	scalar	Visual*		NEG	NEG

FLUID PROPERTIES	method	limit/base	current	history1	history2	
Visc @ 40°C	cSt	ASTM D7279(m)	150	<b>147</b>	143	144

SAMPLE IMAGES	method	limit/base	current	history1	history2
---------------	--------	------------	---------	----------	----------



## GRAPHS



**Laboratory** : WearCheck - C8-1175 Appleby Line, Burlington, ON L7L 5H9  
**Sample No.** : WC0811991      **Received** : 19 Jun 2024  
**Lab Number** : **02643038**      **Tested** : 19 Jun 2024  
**Unique Number** : 5800577      **Diagnosed** : 20 Jun 2024 - Kevin Marson  
**Test Package** : IND 1

**INVISTA**  
 1400 COUNTY ROAD # 2 EAST  
 MAITLAND, ON  
 CA K0E 1P0  
 Contact: Shaun Wilkinson  
 Shaun.Wilkinson@invista.com  
 T: (613)348-4447  
 F: (613)348-3180

To discuss this sample report, contact Customer Service at 1-800-268-2131.  
 Test denoted (\*) outside scope of accreditation, (m) method modified, (e) tested at external lab.  
 Validity of results and interpretation are based on the sample and information as supplied.