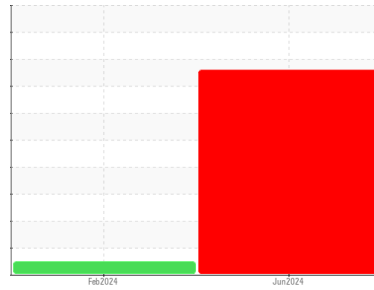




COOLANT REPORT

Sample Rating Trend



WEAR



Machine Id
KOHLER Green Shield A
 Component
Coolant
 Fluid
CONVENTIONAL COOLANT (--- GAL)

DIAGNOSIS

▲ Recommendation

We recommend drain system, and refill with 50/50 antifreeze water mixture. We advise that you replenish the supplemental coolant additives (SCAs) and add per manufacturer's specifications. We recommend an early resample to monitor this condition.

▲ Corrosion

The iron level is high indicating rust in the system which clogs the cooling system.

▲ Contaminants

There is no indication of any contamination in the component(unconfirmed).

Coolant Condition

The coolant is cloudy indicating either an overconcentration of coolant additives, or a mixing of incompatible coolant technologies. The pH level of this fluid is within the acceptable limits. The reserve alkalinity of this fluid is acceptable.

SAMPLE INFORMATION		method	limit/base	current	history1	history2
Sample Number	Client Info			WC0849174	WC0870007	---
Sample Date	Client Info			15 Jun 2024	05 Feb 2024	---
Machine Age	hrs	Client Info		0	0	---
Oil Age	hrs	Client Info		0	0	---
Oil Changed	Client Info			N/A	N/A	---
Sample Status				SEVERE	NORMAL	---

PHYSICAL TEST RESULTS		method	limit/base	current	history1	history2
Glycol Type	FT-IR			UNK	---	---
Specific Gravity	ASTM D1298*			1.086	1.084	---
pH	Scale 0-14	ASTM D1287*	9.5	8.25	8.45	---
Nitrites	ppm	Alcan Test Kit*	1500	680	640	---
Reserve Alkalinity	Scale 0-20	ASTM D1121*	8.5	8.2	7.5	---
Percentage Glycol	%	ASTM D3321*	50	66.6	64.6	---
Freezing Point	°C	ASTM D3321*	-40	-54	-53	---
Carboxylate				---	---	---

CORROSION INHIBITORS		method	limit/base	current	history1	history2
Silicon	ppm	ASTM D5185(m)		12	10	---
Phosphorus	ppm	ASTM D5185(m)		26	7	---
Boron	ppm	ASTM D5185(m)		613	642	---
Molybdenum	ppm	ASTM D5185(m)		12	9	---

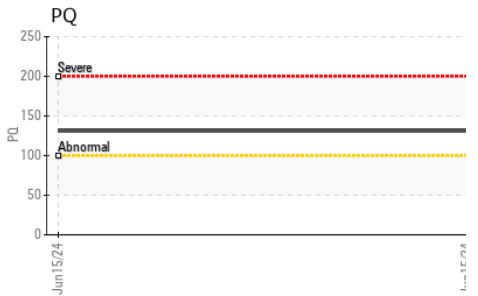
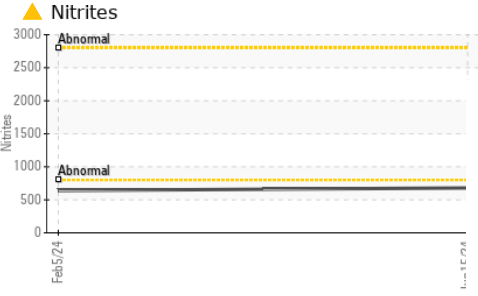
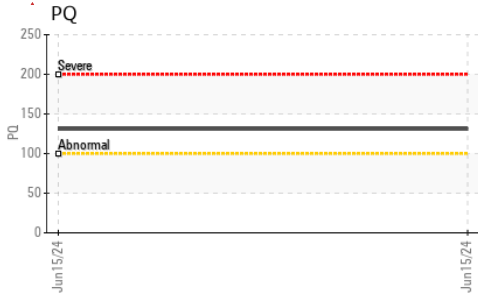
CORROSION		method	limit/base	current	history1	history2
Iron	ppm	ASTM D5185(m)	>15	▲ 69	5	---
Aluminum	ppm	ASTM D5185(m)	>10	9	6	---
Copper	ppm	ASTM D5185(m)	>10	3	0	---
Lead	ppm	ASTM D5185(m)	>10	0	0	---
Tin	ppm	ASTM D5185(m)	>10	0	0	---
Silver	ppm	ASTM D5185(m)	>10	0	<1	---
Zinc	ppm	ASTM D5185(m)		2	<1	---

CARRIER SALTS		method	limit/base	current	history1	history2
Sodium	ppm	ASTM D5185(m)		2642	3058	---
Potassium	ppm	ASTM D5185(m)		2789	3201	---

SCALE POTENTIAL		method	limit/base	current	history1	history2
Calcium	ppm	ASTM D5185(m)	>100	<1	2	---
Magnesium	ppm	ASTM D5185(m)	>40	<1	<1	---
Hardness	mg/L CaCO3	In-house*	<75	4	5	---

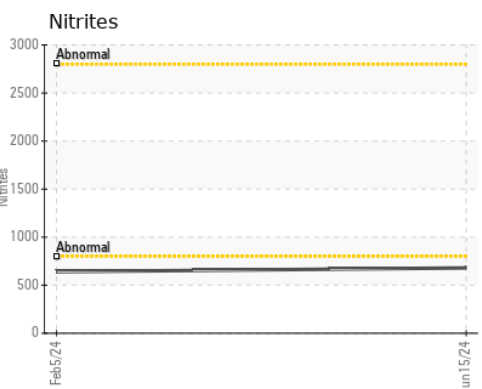
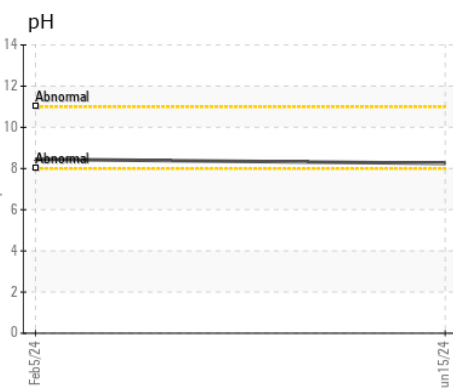
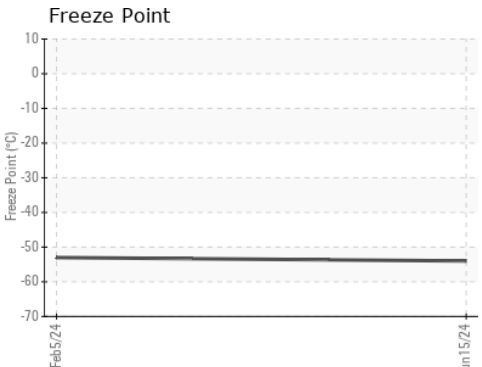
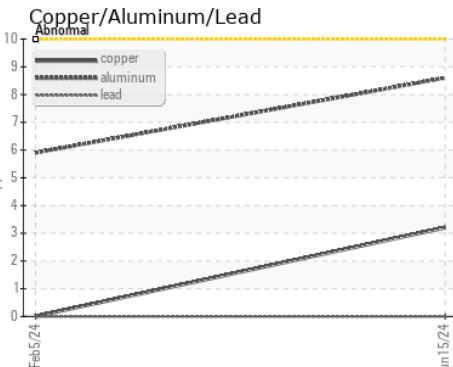
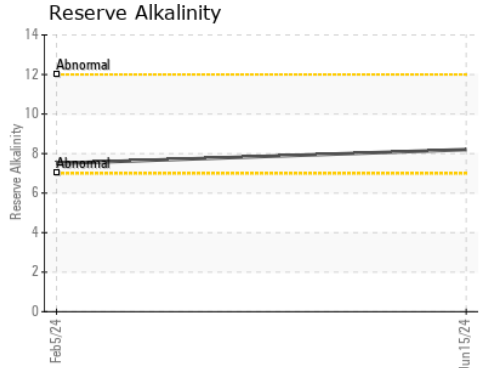
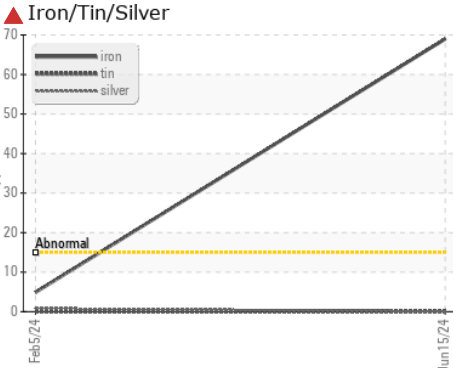


COOLANT REPORT



VISUAL	method	limit/base	current	history1	history2
Coolant Color	Visual*	Green	Green	Green	---
Coolant Appearance	Visual*	Clear	▲ Opaque	Cloudy	---
Color					no image
Bottom					no image

GRAPHS



Laboratory : WearCheck - C8-1175 Appleby Line, Burlington, ON L7L 5H9
Sample No. : WC0849174 **Received** : 19 Jun 2024
Lab Number : **02643045** **Tested** : 21 Jun 2024
Unique Number : 5800584 **Diagnosed** : 21 Jun 2024 - Kevin Marson
Test Package : COOL (Additional Tests: GlycolType, PQ)

CF Industrial Products Inc.
 1928 Road 3 East
 Kingsville, ON
 CA N9Y 2E5
 Contact: Dan Hammond
 danh@cfgroups.com
 T: (519)564-2241
 F: (519)322-2916

To discuss this sample report, contact Customer Service at 1-800-268-2131.
 Test denoted (*) outside scope of accreditation, (m) method modified, (e) tested at external lab.
 Validity of results and interpretation are based on the sample and information as supplied.