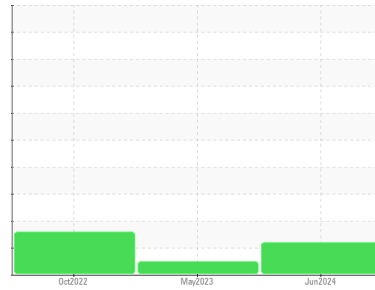




FUEL REPORT

Sample Rating Trend



ISO



Area
[334988]

Machine Id

G2

Component

Diesel Fuel

Fluid

No.2 DIESEL FUEL (ULTRALOW SULPHUR) (--- GAL)

DIAGNOSIS

Recommendation

Les tests de laboratoire indiquent que ce carburant peut être utilisé et qu'il répond à toutes les exigences. Nous vous recommandons de filtrer ce fluide avant de l'utiliser. Nous recommandons le remplacement des filtres de ce composant. Nous vous recommandons d'échantillonner de nouveau dès que possible afin de contrôler la situation.

Contaminants

Il y a une quantité modérée de particules (de 4 à 14 microns) dans le carburant. La teneur en eau est négligeable.

Fuel Condition

Tous les essais en laboratoire indiquent que cet échantillon satisfait aux spécifications pour le carburant diesel à ultra-faible teneur de soufre No.2 (US EPA/CGSB-3.517-3 type B). le carburant peut encore servir si la contamination peut être réduite à un niveau acceptable.

SAMPLE INFORMATION

method	limit/base	current	history1	history2
Sample Number	Client Info	CU0022905	CU0018877	CU0019167
Sample Date	Client Info	18 Jun 2024	09 May 2023	19 Oct 2022
Machine Age	hrs	0	0	0
Sample Status		ABNORMAL	NORMAL	ATTENTION

PHYSICAL PROPERTIES

method	limit/base	current	history1	history2		
Specific Gravity	ASTM D1298*	0.839	0.844	0.826	0.816	
Fuel Color	text	Visual Screen*	Yllow	LtRed	Red	Red
Visc @ 40°C	cSt	ASTM D7279(m)	3.0	2.3	2	1.9
Pensky-Martens Flash Point	°C	ASTM D7215*	52	61.2	51.2	48

SULFUR CONTENT

method	limit/base	current	history1	history2		
Sulfur	ppm	ASTM D5185(m)	10	11	7	<1

DISTILLATION

method	limit/base	current	history1	history2		
Initial Boiling Point	°C	ASTM D2887*	165	172	160	152
5% Distillation Point	°C	ASTM D2887*		193	181	169
10% Distill Point	°C	ASTM D2887*	201	203	189	179
15% Distillation Point	°C	ASTM D2887*		211	195	185
20% Distill Point	°C	ASTM D2887*	216	218	202	191
30% Distill Point	°C	ASTM D2887*	230	232	214	206
40% Distill Point	°C	ASTM D2887*	243	243	226	219
50% Distill Point	°C	ASTM D2887*	255	255	237	233
60% Distill Point	°C	ASTM D2887*	267	267	251	248
70% Distill Point	°C	ASTM D2887*	280	278	265	261
80% Distill Point	°C	ASTM D2887*	295	291	281	273
85% Distillation Point	°C	ASTM D2887*		302	293	281
90% Distill Point	°C	ASTM D2887*	310	312	305	294
95% Distillation Point	°C	ASTM D2887*		330	324	322
Final Boiling Point	°C	ASTM D2887*	341	363	346	344

IGNITION QUALITY

method	limit/base	current	history1	history2	
API Gravity	ASTM D1298*	37.7	36	39	41
Cetane Index	ASTM D4737*	<40.0	45	48	50

CONTAMINANTS

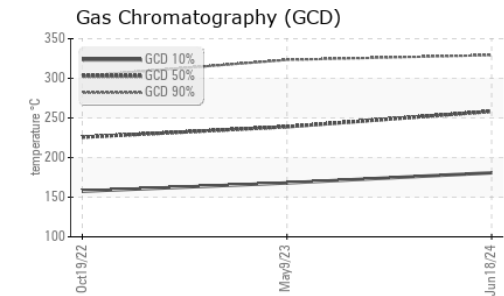
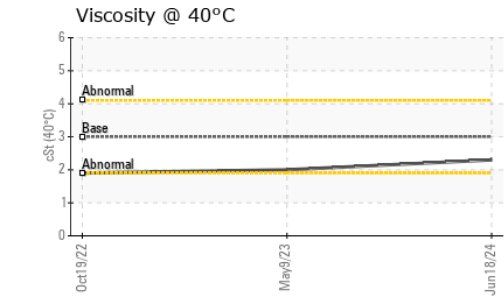
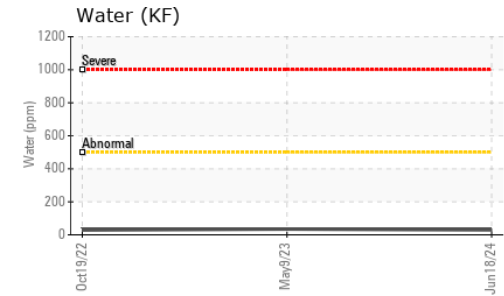
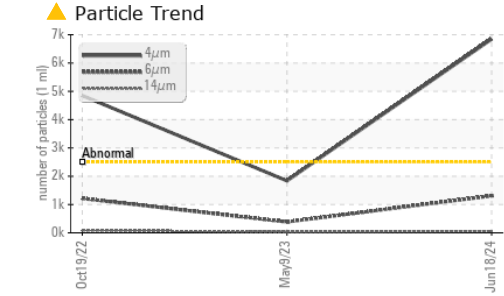
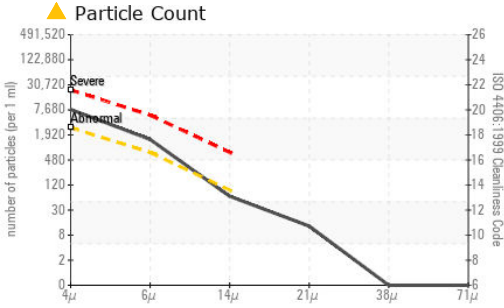
method	limit/base	current	history1	history2		
Silicon	ppm	ASTM D5185(m)	<1.0	0	0	0
Sodium	ppm	ASTM D5185(m)	<0.1	0	0	<1
Potassium	ppm	ASTM D5185(m)	<0.1	0	0	0
Water	%	ASTM D6304*	<0.05	0.003	0.003	0.003
ppm Water	ppm	ASTM D6304*	<500	29	34.7	29.1

FLUID CLEANLINESS

method	limit/base	current	history1	history2	
Particles >4µm	ASTM D7647	>2500	▲ 6846	1838	● 4850
Particles >6µm	ASTM D7647	>640	▲ 1307	385	● 1215
Particles >14µm	ASTM D7647	>80	57	33	● 84
Particles >21µm	ASTM D7647	>20	11	11	● 19
Particles >38µm	ASTM D7647	>4	0	1	● 1
Particles >71µm	ASTM D7647	>3	0	0	● 0
Oil Cleanliness	ISO 4406 (c)	>18/16/13	▲ 20/18/13	18/16/12	● 19/17/14



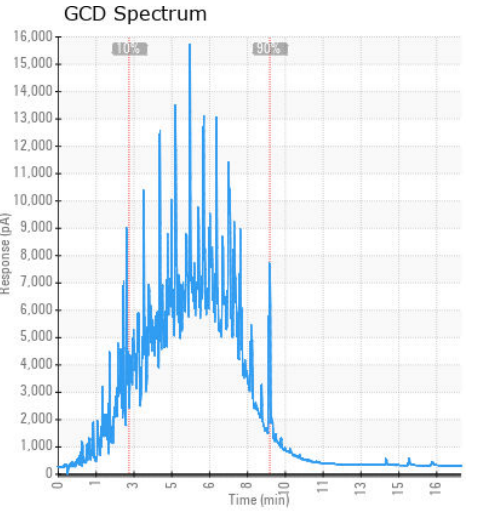
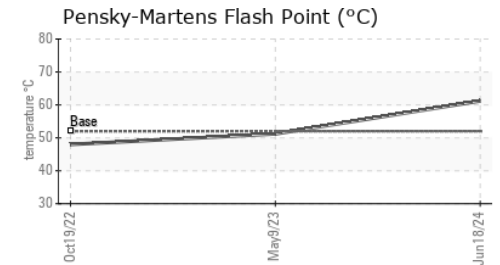
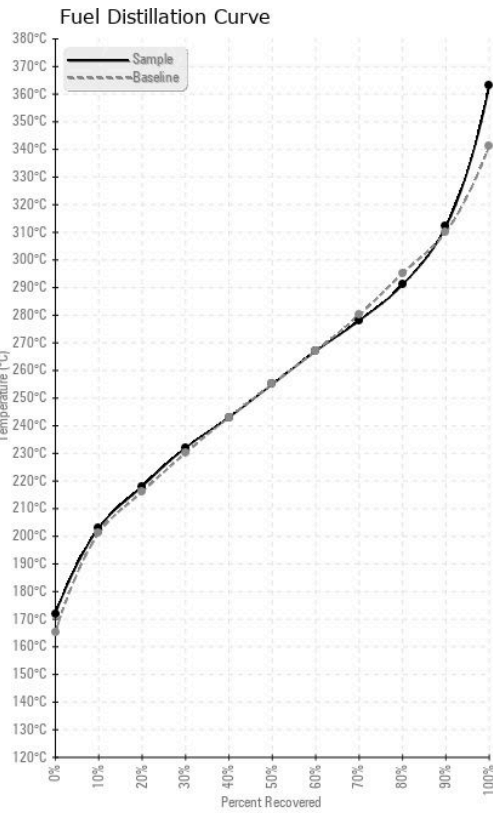
FUEL REPORT



HEAVY METALS	method	limit/base	current	history1	history2
Aluminum	ppm	ASTM D5185(m)	<0.1	0	0
Nickel	ppm	ASTM D5185(m)	<0.1	0	0
Lead	ppm	ASTM D5185(m)	<0.1	0	1
Vanadium	ppm	ASTM D5185(m)	<0.1	0	0
Iron	ppm	ASTM D5185(m)	<0.1	<1	<1
Calcium	ppm	ASTM D5185(m)	<0.1	<1	<1
Magnesium	ppm	ASTM D5185(m)	<0.1	0	<1
Phosphorus	ppm	ASTM D5185(m)	<0.1	0	<1
Zinc	ppm	ASTM D5185(m)	<0.1	<1	<1

SAMPLE IMAGES	method	limit/base	current	history1	history2
Color					
Bottom					

GRAPHS



Laboratory : WearCheck - C8-1175 Appleby Line, Burlington, ON L7L 5H9
Sample No. : CU0022905
Lab Number : 02643048
Unique Number : 5800587
Test Package : FUEL (Additional Tests: CC Flash, PrtCount)

CUMMINS EASTERN CANADA LP
 315 AV LIBERTE
 CANDIAC, QC
 CA J5R 6Z7
 Contact: Thomas Owens
 is275@cummins.com
 T: (450)638-6863
 F: (450)638-1202

To discuss this sample report, contact Customer Service at 1-800-268-2131.
 Test denoted (*) outside scope of accreditation, (m) method modified, (e) tested at external lab.
 Validity of results and interpretation are based on the sample and information as supplied.