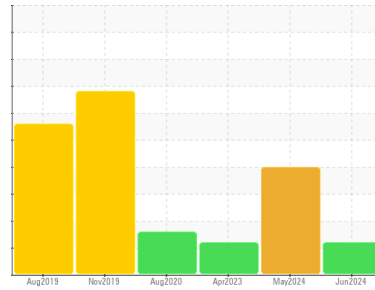




FUEL REPORT

Sample Rating Trend



ISO



Area
COLOGIX [335070]
 Machine Id
33203173
 Component
Diesel Fuel
 Fluid
No.1 DIESEL FUEL (ULTRALOW SULPHUR) (--- GAL)

DIAGNOSIS

Recommendation

Les tests de laboratoire indiquent que ce carburant peut être utilisé et qu'il répond à toutes les exigences. Nous vous recommandons de filtrer ce fluide avant de l'utiliser. Nous recommandons le remplacement des filtres de ce composant. Échantillonner de nouveau l'équipement au prochain intervalle de vidange afin d'en surveiller la condition.

Contaminants

Il y a une légère quantité de limon (particules de 4 à 14 microns) dans le carburant. La teneur en eau est négligeable.

Fuel Condition

Tous les essais en laboratoire indiquent que cet échantillon satisfait aux spécifications pour le carburant diesel à ultra-faible teneur de soufre No.1 (US EPA/CGSB-3.517-3 type A).

SAMPLE INFORMATION		method	limit/base	current	history1	history2
Sample Number	Client Info			CU0022997	CU0022915	CU0020369
Sample Date	Client Info			12 Jun 2024	15 May 2024	04 Apr 2023
Machine Age	hrs	Client Info		252	0	0
Sample Status				ATTENTION	SEVERE	ABNORMAL

PHYSICAL PROPERTIES		method	limit/base	current	history1	history2
Specific Gravity		ASTM D1298*	0.825	0.817	0.817	0.816
Fuel Color	text	Visual Screen*	Clear	LtRed	Pink	Pink
Visc @ 40°C	cSt	ASTM D7279(m)	1.8	1.6	1.7	1.6
Pensky-Martens Flash Point	°C	ASTM D7215*	38	51.5	51.9	51.5

SULFUR CONTENT		method	limit/base	current	history1	history2
Sulfur	ppm	ASTM D5185(m)	10	12	9	10

DISTILLATION		method	limit/base	current	history1	history2
Initial Boiling Point	°C	ASTM D2887*	159	160	161	160
5% Distillation Point	°C	ASTM D2887*		178	179	179
10% Distill Point	°C	ASTM D2887*	184	183	185	185
15% Distillation Point	°C	ASTM D2887*		189	190	190
20% Distill Point	°C	ASTM D2887*	196	194	195	195
30% Distill Point	°C	ASTM D2887*	205	203	205	203
40% Distill Point	°C	ASTM D2887*	216	212	215	212
50% Distill Point	°C	ASTM D2887*	227	222	225	221
60% Distill Point	°C	ASTM D2887*	238	232	235	230
70% Distill Point	°C	ASTM D2887*	251	242	245	239
80% Distill Point	°C	ASTM D2887*	264	257	261	252
85% Distillation Point	°C	ASTM D2887*		269	274	263
90% Distill Point	°C	ASTM D2887*	288	280	288	273
95% Distillation Point	°C	ASTM D2887*		302	312	294
Final Boiling Point	°C	ASTM D2887*	309	345	354	322

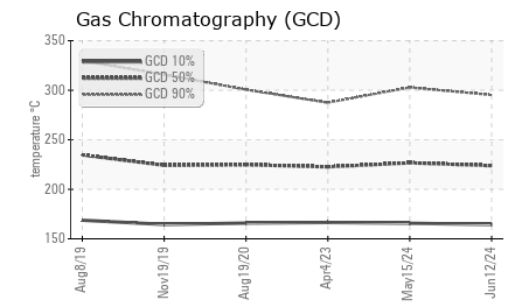
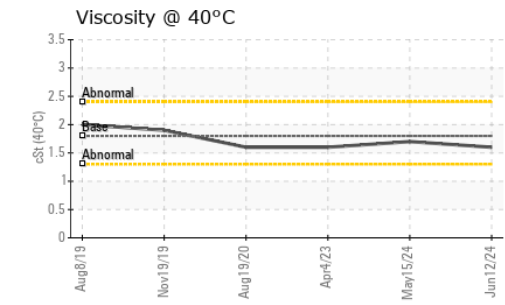
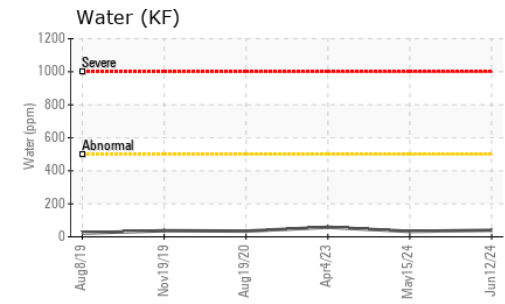
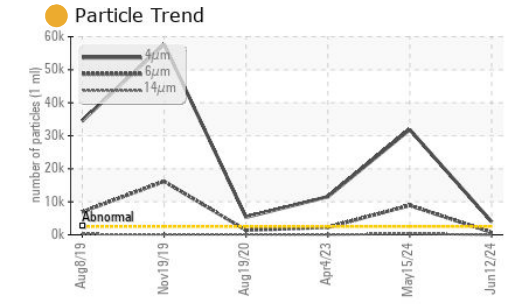
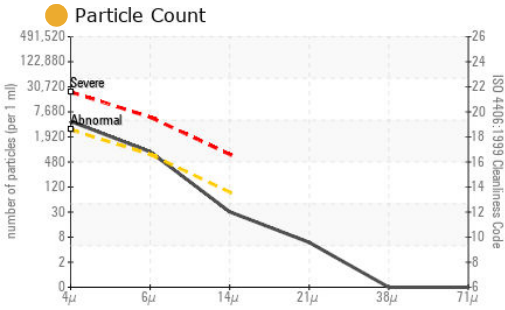
IGNITION QUALITY		method	limit/base	current	history1	history2
API Gravity		ASTM D1298*	40.1	41	41	41
Cetane Index		ASTM D4737*	<40.0	47	48	47

CONTAMINANTS		method	limit/base	current	history1	history2
Silicon	ppm	ASTM D5185(m)	<1.0	0	0	0
Sodium	ppm	ASTM D5185(m)	<0.1	0	<1	<1
Potassium	ppm	ASTM D5185(m)	<0.1	0	0	0
Water	%	ASTM D6304*	<0.05	0.004	0.003	0.005
ppm Water	ppm	ASTM D6304*	<500	40	33	58.2

FLUID CLEANLINESS		method	limit/base	current	history1	history2
Particles >4µm		ASTM D7647	>2500	3966	31857	11551
Particles >6µm		ASTM D7647	>640	741	8911	2275
Particles >14µm		ASTM D7647	>80	27	317	45
Particles >21µm		ASTM D7647	>20	5	28	8
Particles >38µm		ASTM D7647	>4	0	0	0
Particles >71µm		ASTM D7647	>3	0	0	0
Oil Cleanliness		ISO 4406 (c)	>18/16/13	19/17/12	22/20/15	21/18/13



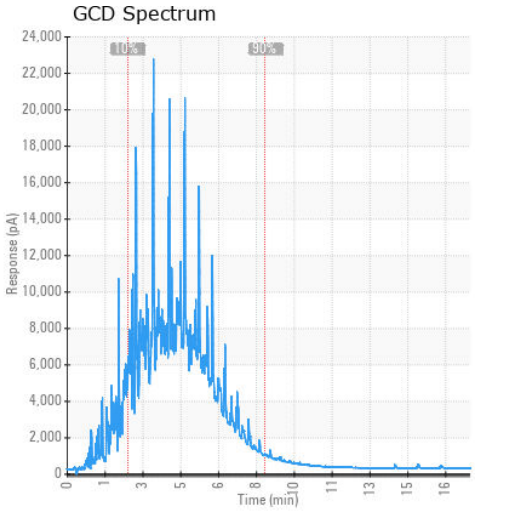
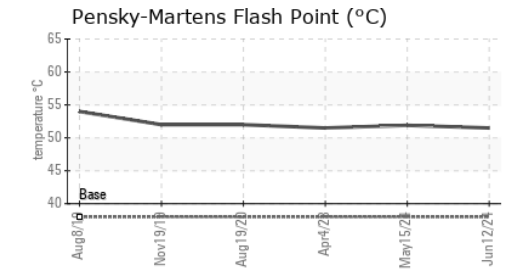
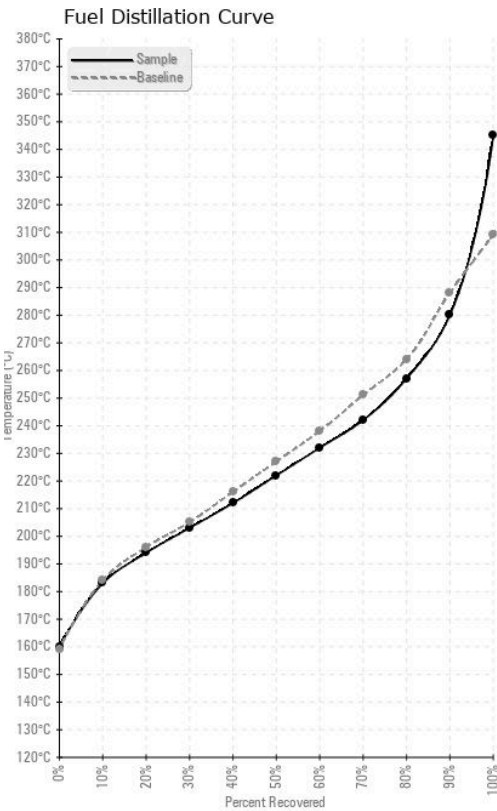
FUEL REPORT



HEAVY METALS	method	limit/base	current	history1	history2
Aluminum	ppm	ASTM D5185(m)	<0.1	0	0
Nickel	ppm	ASTM D5185(m)	<0.1	0	0
Lead	ppm	ASTM D5185(m)	<0.1	0	<1
Vanadium	ppm	ASTM D5185(m)	<0.1	0	0
Iron	ppm	ASTM D5185(m)	<0.1	0	<1
Calcium	ppm	ASTM D5185(m)	<0.1	<1	<1
Magnesium	ppm	ASTM D5185(m)	<0.1	0	<1
Phosphorus	ppm	ASTM D5185(m)	<0.1	<1	0
Zinc	ppm	ASTM D5185(m)	<0.1	1	<1

SAMPLE IMAGES	method	limit/base	current	history1	history2
Color					
Bottom					

GRAPHS



Laboratory : WearCheck - C8-1175 Appleby Line, Burlington, ON L7L 5H9
Sample No. : CU0022997
Lab Number : 02643049
Unique Number : 5800588
Test Package : FUEL (Additional Tests: CC Flash, PrtCount)

CUMMINS EASTERN CANADA LP
 315 AV LIBERTE
 CANDIAC, QC
 CA J5R 6Z7
 Contact: Thomas Owens
 is275@cummins.com
 T: (450)638-6863
 F: (450)638-1202

To discuss this sample report, contact Customer Service at 1-800-268-2131.
 Test denoted (*) outside scope of accreditation, (m) method modified, (e) tested at external lab.
 Validity of results and interpretation are based on the sample and information as supplied.