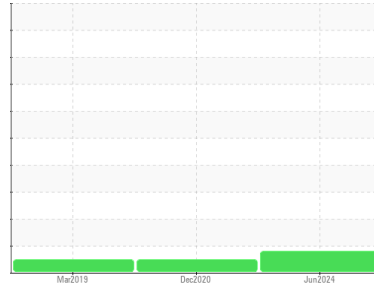




OIL ANALYSIS REPORT

Sample Rating Trend



WEAR



Area
CFR#41916
 Machine Id
210
 Component
Right Final Drive
 Fluid
MOBIL DELVAC SYNTHETIC ATF (--- GAL)

DIAGNOSIS

▲ Recommendation

We recommend an early resample to monitor this condition. Please specify the component make and model with your next sample.

▲ Wear

Nickel ppm levels are marginal. All other component wear rates are normal.

Contamination

There is no indication of any contamination in the oil.

Fluid Condition

The condition of the oil is acceptable for the time in service.

SAMPLE INFORMATION

	method	limit/base	current	history1	history2
Sample Number	Client Info		WC877037	WC876035	WC876383
Sample Date	Client Info		14 Jun 2024	15 Dec 2020	06 Mar 2019
Machine Age	kms	Client Info	3924	0	0
Oil Age	kms	Client Info	1947	758	0
Oil Changed	Client Info		N/A	N/A	N/A
Sample Status			MARGINAL	NORMAL	NORMAL

CONTAMINATION

	method	limit/base	current	history1	history2
Water	WC Method	>0.2	NEG	NEG	NEG

WEAR METALS

	method	limit/base	current	history1	history2	
Iron	ppm	ASTM D5185(m)	>500	138	34	2
Chromium	ppm	ASTM D5185(m)	>10	3	<1	0
Nickel	ppm	ASTM D5185(m)	>10	▲ 10	1	<1
Titanium	ppm	ASTM D5185(m)		<1	0	0
Silver	ppm	ASTM D5185(m)		<1	<1	0
Aluminum	ppm	ASTM D5185(m)	>25	10	2	<1
Lead	ppm	ASTM D5185(m)	>25	0	<1	<1
Copper	ppm	ASTM D5185(m)	>50	2	2	5
Tin	ppm	ASTM D5185(m)	>10	0	<1	<1
Antimony	ppm	ASTM D5185(m)	>5	0	<1	0
Vanadium	ppm	ASTM D5185(m)		0	0	0
Beryllium	ppm	ASTM D5185(m)		0	0	0
Cadmium	ppm	ASTM D5185(m)		2	<1	23

ADDITIVES

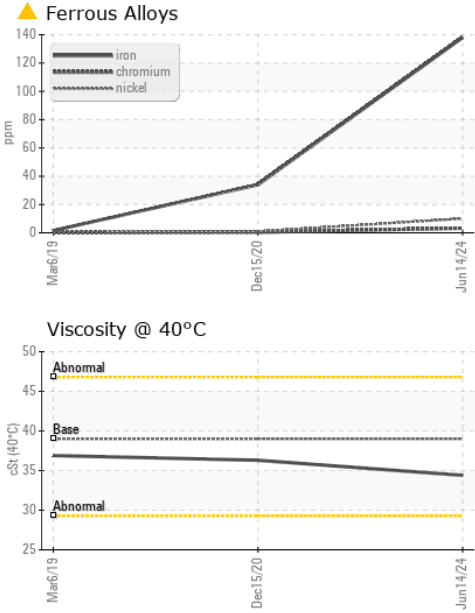
	method	limit/base	current	history1	history2	
Boron	ppm	ASTM D5185(m)		207	208	129
Barium	ppm	ASTM D5185(m)		<1	<1	0
Molybdenum	ppm	ASTM D5185(m)		7	3	3
Manganese	ppm	ASTM D5185(m)		1	<1	<1
Magnesium	ppm	ASTM D5185(m)		<1	<1	1
Calcium	ppm	ASTM D5185(m)		155	154	42
Phosphorus	ppm	ASTM D5185(m)		448	463	282
Zinc	ppm	ASTM D5185(m)		42	12	25
Sulfur	ppm	ASTM D5185(m)		1561	1777	1011
Lithium	ppm	ASTM D5185(m)		7	4	2

CONTAMINANTS

	method	limit/base	current	history1	history2	
Silicon	ppm	ASTM D5185(m)	>75	15	11	5
Sodium	ppm	ASTM D5185(m)		10	6	10
Potassium	ppm	ASTM D5185(m)	>20	7	4	8



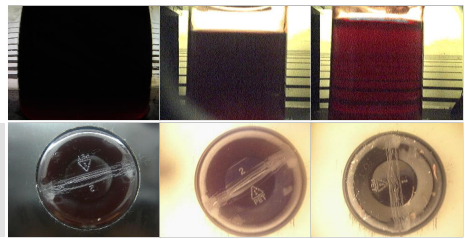
OIL ANALYSIS REPORT



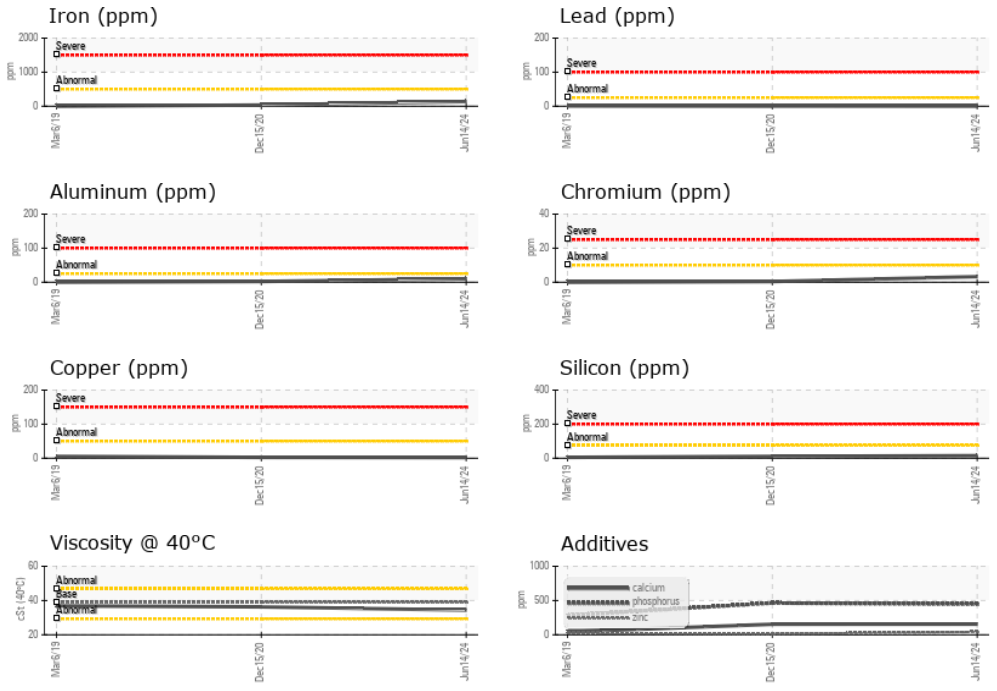
VISUAL	method	limit/base	current	history1	history2
White Metal	scalar	Visual*	NONE	NONE	VLITE
Yellow Metal	scalar	Visual*	NONE	NONE	NONE
Precipitate	scalar	Visual*	NONE	NONE	NONE
Silt	scalar	Visual*	NONE	NONE	NONE
Debris	scalar	Visual*	NONE	NONE	NONE
Sand/Dirt	scalar	Visual*	NONE	NONE	NONE
Appearance	scalar	Visual*	NORML	NORML	NORML
Odor	scalar	Visual*	NORML	NORML	NORML
Emulsified Water	scalar	Visual*	>0.2	NEG	NEG
Free Water	scalar	Visual*		NEG	NEG

FLUID PROPERTIES	method	limit/base	current	history1	history2
Visc @ 40°C	cSt	ASTM D7279(m)	39	34.4	36.3

SAMPLE IMAGES	method	limit/base	current	history1	history2
Color					
Bottom					



GRAPHS



Laboratory : WearCheck - C8-1175 Appleby Line, Burlington, ON L7L 5H9
Sample No. : WC877037
Lab Number : 02643471
Unique Number : 5801010
Test Package : MOB 1
Received : 21 Jun 2024
Tested : 21 Jun 2024
Diagnosed : 21 Jun 2024 - Kevin Marson

DEPARTMENT OF NATIONAL DEFENSE
 MGEN.GEORGE R.PEARKE'S BUILDING
 OTTAWA, ON
 CA K1A 0K2
 Contact: Philippe Charron
 philippe.charron@forces.gc.ca
 T: (514)252-2777
 F: (819)997-9989

To discuss this sample report, contact Customer Service at 1-800-268-2131.
 Test denoted (*) outside scope of accreditation, (m) method modified, (e) tested at external lab.
 Validity of results and interpretation are based on the sample and information as supplied.