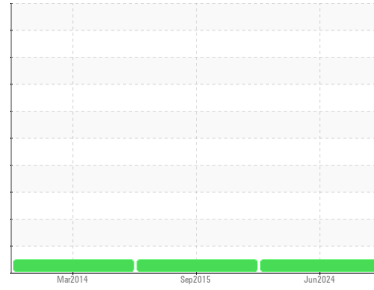




OIL ANALYSIS REPORT

Sample Rating Trend



NORMAL



Machine Id
DODGE TDT 425 105723 #2 COAL/COKE BELT (S/N TDT 425)
 Component
Gearbox
 Fluid
MOBIL MOBILGEAR SHC 220 (6 LTR)

DIAGNOSIS

Recommendation

Resample at the next service interval to monitor.

Wear

All component wear rates are normal.

Contamination

There is no indication of any contamination in the oil.

Fluid Condition

The AN level is acceptable for this fluid. The condition of the oil is suitable for further service.

SAMPLE INFORMATION		method	limit/base	current	history1	history2
Sample Number	Client Info			WC0951875	WC	WC895152
Sample Date	Client Info			19 Jun 2024	30 Sep 2015	21 Mar 2014
Machine Age	hrs	Client Info		0	0	57491
Oil Age	hrs	Client Info		0	0	50187
Oil Changed	Client Info			N/A	N/A	Not Changd
Sample Status				NORMAL	NORMAL	NORMAL

CONTAMINATION		method	limit/base	current	history1	history2
Water	WC Method		>0.2	NEG	NEG	NEG

WEAR METALS		method	limit/base	current	history1	history2
PQ		ASTM D8184*		66	17	12
Iron	ppm	ASTM D5185(m)	>200	134	23	30
Chromium	ppm	ASTM D5185(m)	>15	1	<1	<1
Nickel	ppm	ASTM D5185(m)	>15	<1	0	<1
Titanium	ppm	ASTM D5185(m)		2	0	<1
Silver	ppm	ASTM D5185(m)		0	0	0
Aluminum	ppm	ASTM D5185(m)	>25	2	<1	<1
Lead	ppm	ASTM D5185(m)	>100	0	0	0
Copper	ppm	ASTM D5185(m)	>200	4	<1	<1
Tin	ppm	ASTM D5185(m)	>25	0	0	0
Antimony	ppm	ASTM D5185(m)	>5	0	0	<1
Vanadium	ppm	ASTM D5185(m)		0	0	0
Beryllium	ppm	ASTM D5185(m)		0	0	0
Cadmium	ppm	ASTM D5185(m)		<1	0	<1

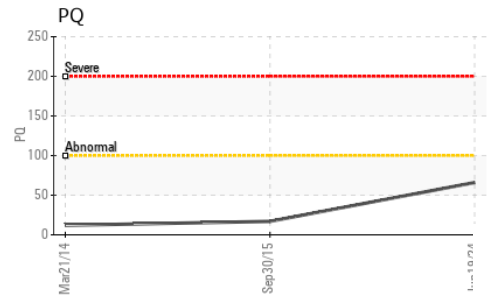
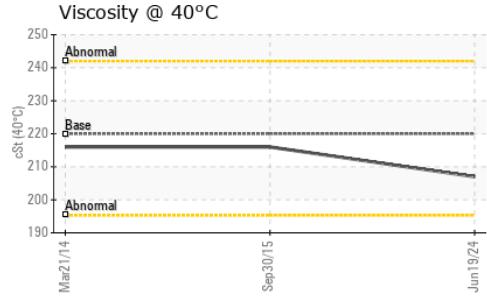
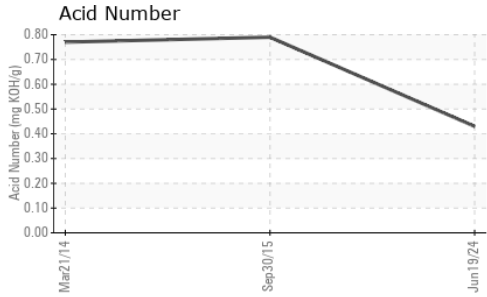
ADDITIVES		method	limit/base	current	history1	history2
Boron	ppm	ASTM D5185(m)		2	10	12
Barium	ppm	ASTM D5185(m)		<1	0	0
Molybdenum	ppm	ASTM D5185(m)		0	2	<1
Manganese	ppm	ASTM D5185(m)		1	<1	<1
Magnesium	ppm	ASTM D5185(m)		1	<1	2
Calcium	ppm	ASTM D5185(m)		15	13	18
Phosphorus	ppm	ASTM D5185(m)		195	401	375
Zinc	ppm	ASTM D5185(m)		16	1	3
Sulfur	ppm	ASTM D5185(m)		3912	3584	4041
Lithium	ppm	ASTM D5185(m)		<1	<1	<1

CONTAMINANTS		method	limit/base	current	history1	history2
Silicon	ppm	ASTM D5185(m)	>50	13	20	18
Sodium	ppm	ASTM D5185(m)		0	<1	0
Potassium	ppm	ASTM D5185(m)	>20	3	7	10

FLUID DEGRADATION		method	limit/base	current	history1	history2
Acid Number (AN)	mg KOH/g	ASTM D974*		0.43	0.79	0.77



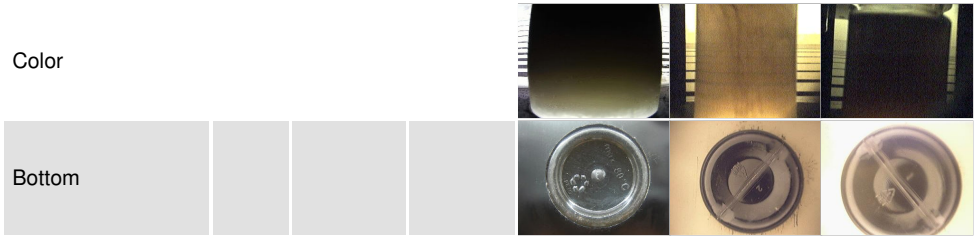
OIL ANALYSIS REPORT



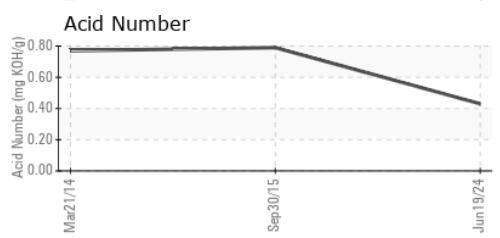
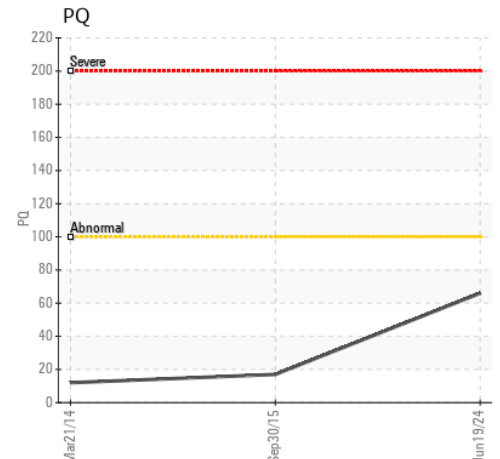
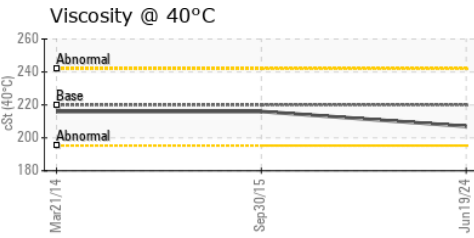
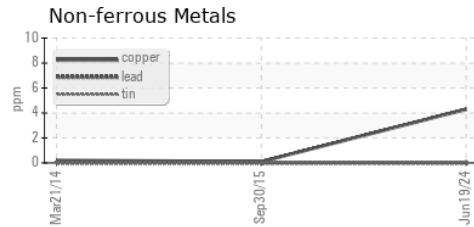
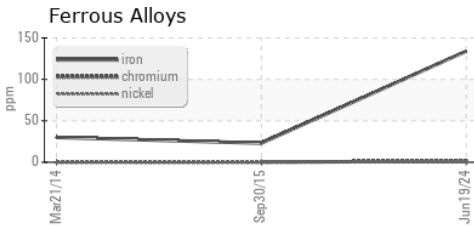
VISUAL	method	limit/base	current	history1	history2
White Metal	scalar	Visual*	NONE	NONE	VLITE
Yellow Metal	scalar	Visual*	NONE	NONE	NONE
Precipitate	scalar	Visual*	NONE	NONE	NONE
Silt	scalar	Visual*	NONE	NONE	NONE
Debris	scalar	Visual*	NONE	NONE	VLITE
Sand/Dirt	scalar	Visual*	NONE	VLITE	NONE
Appearance	scalar	Visual*	NORML	NORML	NORML
Odor	scalar	Visual*	NORML	NORML	NORML
Emulsified Water	scalar	Visual*	>0.2	NEG	NEG
Free Water	scalar	Visual*		NEG	NEG

FLUID PROPERTIES	method	limit/base	current	history1	history2
Visc @ 40°C	cSt	ASTM D7279(m)	220	207	216

SAMPLE IMAGES	method	limit/base	current	history1	history2
---------------	--------	------------	---------	----------	----------



GRAPHS



Laboratory : WearCheck - C8-1175 Appleby Line, Burlington, ON L7L 5H9
Sample No. : WC0951875 **Received** : 21 Jun 2024
Lab Number : **02643497** **Tested** : 21 Jun 2024
Unique Number : 5801036 **Diagnosed** : 21 Jun 2024 - Wes Davis
Test Package : IND 2 (Additional Tests: TAN Man)

CARMEUSE LIME CANADA LTD.
 BOX 1690., HWY 17 EAST
 BLIND RIVER, ON
 CA P0R 1B0
 Contact: Rejean Baillargeon
 rejean.baillargeon@carmeusena.com
 T: (705)849-2201
 F: (705)849-2355

To discuss this sample report, contact Customer Service at 1-800-268-2131.
 Test denoted (*) outside scope of accreditation, (m) method modified, (e) tested at external lab.
 Validity of results and interpretation are based on the sample and information as supplied.