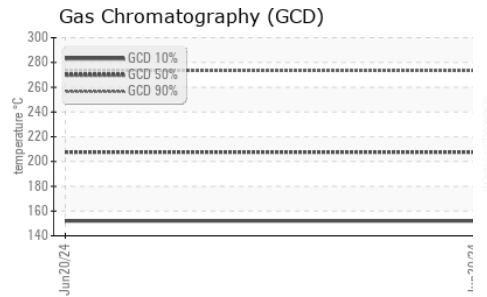
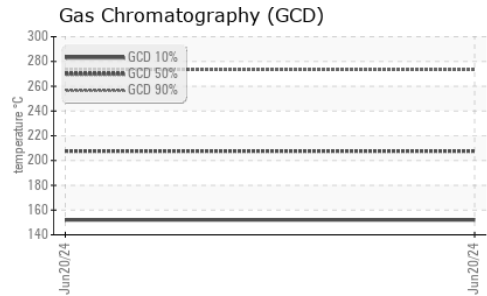
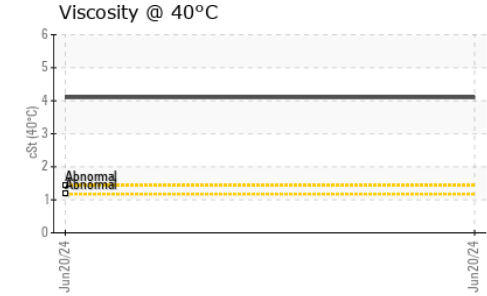
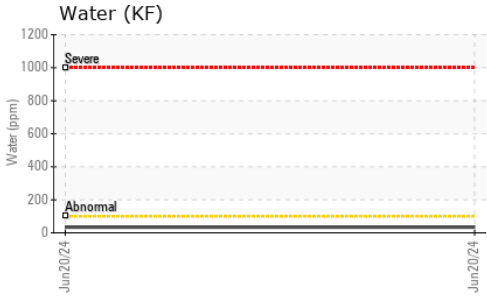






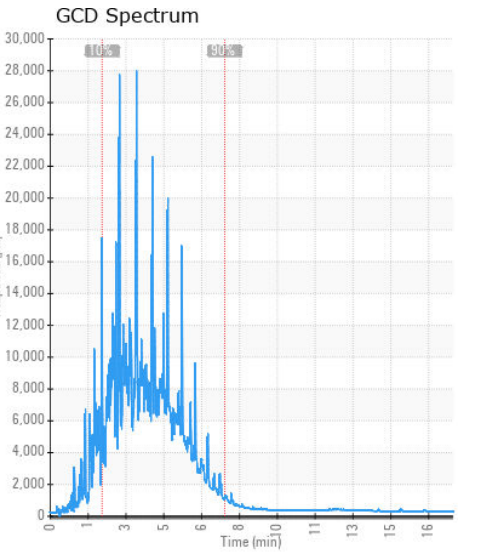
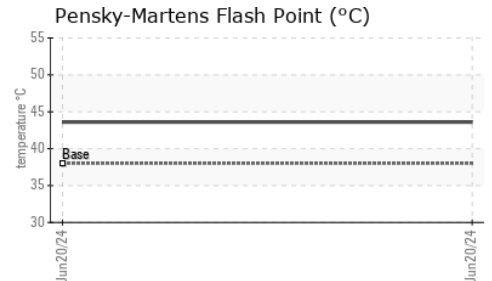
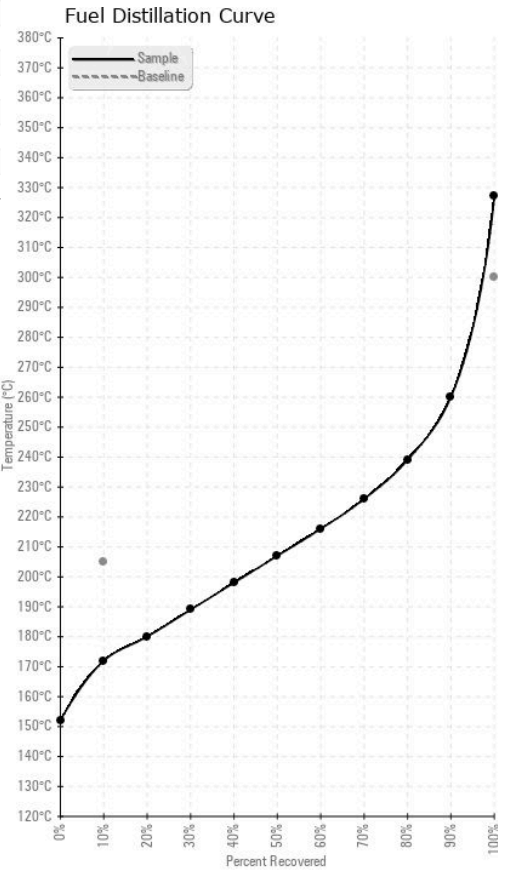
# FUEL REPORT



HEAVY METALS		method	limit/base	current	history1	history2
Aluminum	ppm	ASTM D5185(m)	<0.1	0	---	---
Nickel	ppm	ASTM D5185(m)	<0.1	0	---	---
Lead	ppm	ASTM D5185(m)	<0.1	0	---	---
Vanadium	ppm	ASTM D5185(m)	<0.1	0	---	---
Iron	ppm	ASTM D5185(m)	<0.1	0	---	---
Calcium	ppm	ASTM D5185(m)	<0.1	0	---	---
Magnesium	ppm	ASTM D5185(m)	<0.1	0	---	---
Phosphorus	ppm	ASTM D5185(m)	<0.1	<1	---	---
Zinc	ppm	ASTM D5185(m)	<0.1	0	---	---

SAMPLE IMAGES		method	limit/base	current	history1	history2
Color				no image	no image	
Bottom				no image	no image	

## GRAPHS



**Laboratory** : WearCheck - C8-1175 Appleby Line, Burlington, ON L7L 5H9  
**Sample No.** : WC0653007 **Received** : 21 Jun 2024  
**Lab Number** : 02643546 **Tested** : 25 Jun 2024  
**Unique Number** : 5801085 **Diagnosed** : 25 Jun 2024 - Bill Quesnel  
**Test Package** : FUEL ( Additional Tests: CC Flash )

**PORTER AIRLINES INC**  
 BILLY BISHOP TORONTO CITY AIRPORT, HANGAR 5  
 TORONTO, ON  
 CA M5V 1A1  
 Contact: Jason Thibault  
 jason.thibault@flyporter.com  
 T: (647)454-7933  
 F: (416)203-9198

To discuss this sample report, contact Customer Service at 1-800-268-2131.  
 Test denoted (\*) outside scope of accreditation, (m) method modified, (e) tested at external lab.  
 Validity of results and interpretation are based on the sample and information as supplied.