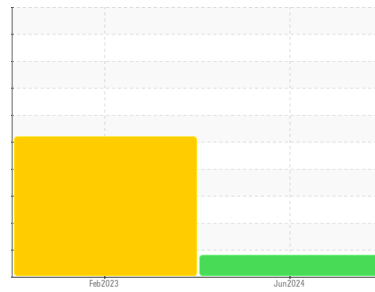




FUEL REPORT

Sample Rating Trend



ISO



Area

[71396]

Machine Id

SUMMERSIDE (S/N L190699866)

Component

Diesel Fuel

Fluid

No.2 DIESEL FUEL (LOW-SULPHUR) (--- GAL)

DIAGNOSIS

Recommendation

Laboratory test indicate that this fuel is suitable for use and meets all test requirements. We advise that you filter this fluid before use. The filter change at the time of sampling has been noted. Resample at the next service interval to monitor.

Contaminants

There is a light amount of silt (particulates < 14 microns in size) present in the fuel. The water content is negligible.

Fuel Condition

All laboratory tests indicate that this sample meets specifications for No.2 diesel fuel, low sulfur (US EPA/CGSB-3.517-3 type B).

SAMPLE INFORMATION		method	limit/base	current	history1	history2
Sample Number	Client Info			CU0021728	CU0020677	---
Sample Date	Client Info			11 Jun 2024	03 Feb 2023	---
Machine Age	hrs	Client Info		98	74	---
Sample Status				ATTENTION	SEVERE	---

PHYSICAL PROPERTIES		method	limit/base	current	history1	history2
Specific Gravity		ASTM D1298*	0.839	0.824	0.826	---
Fuel Color	text	Visual Screen*	Yellow	Yellow	Red	---
Visc @ 40°C	cSt	ASTM D7279(m)	3.0	1.9	2.1	---
Pensky-Martens Flash Point	°C	ASTM D7215*	52	51.6	▲ 55.6	---

SULFUR CONTENT		method	limit/base	current	history1	history2
Sulfur	ppm	ASTM D5185(m)	250	21	12	---

DISTILLATION		method	limit/base	current	history1	history2
Initial Boiling Point	°C	ASTM D2887*	165	161	166	---
5% Distillation Point	°C	ASTM D2887*		183	185	---
10% Distill Point	°C	ASTM D2887*	201	192	194	---
15% Distillation Point	°C	ASTM D2887*		198	201	---
20% Distill Point	°C	ASTM D2887*	216	205	208	---
30% Distill Point	°C	ASTM D2887*	230	217	220	---
40% Distill Point	°C	ASTM D2887*	243	228	232	---
50% Distill Point	°C	ASTM D2887*	255	239	244	---
60% Distill Point	°C	ASTM D2887*	267	252	256	---
70% Distill Point	°C	ASTM D2887*	280	264	268	---
80% Distill Point	°C	ASTM D2887*	295	280	284	---
85% Distillation Point	°C	ASTM D2887*		292	295	---
90% Distill Point	°C	ASTM D2887*	310	304	306	---
95% Distillation Point	°C	ASTM D2887*		325	326	---
Final Boiling Point	°C	ASTM D2887*	341	366	347	---

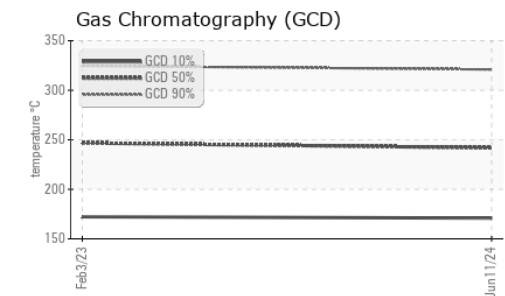
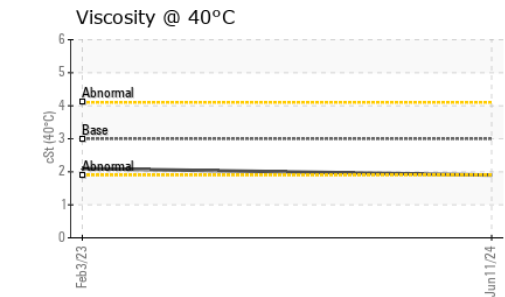
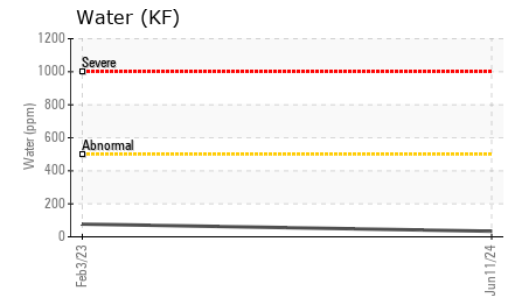
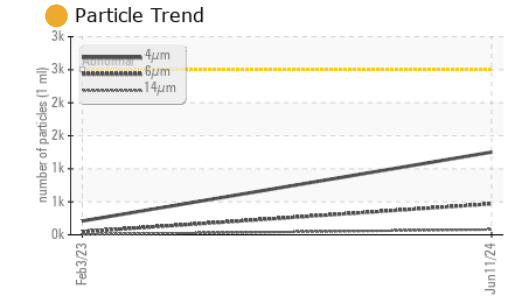
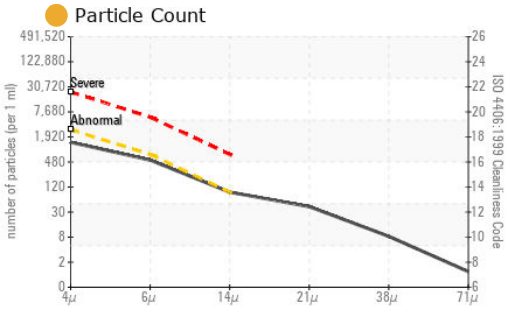
IGNITION QUALITY		method	limit/base	current	history1	history2
API Gravity		ASTM D1298*	37.7	40	39	---
Cetane Index		ASTM D4737*	<40.0	49	50	---

CONTAMINANTS		method	limit/base	current	history1	history2
Silicon	ppm	ASTM D5185(m)	<1.0	0	0	---
Sodium	ppm	ASTM D5185(m)	<0.1	0	<1	---
Potassium	ppm	ASTM D5185(m)	<0.1	0	0	---
Water	%	ASTM D6304*	<0.05	0.003	0.007	---
ppm Water	ppm	ASTM D6304*	<500	34	77.3	---

FLUID CLEANLINESS		method	limit/base	current	history1	history2
Particles >4µm		ASTM D7647	>2500	1252	209	---
Particles >6µm		ASTM D7647	>640	469	47	---
Particles >14µm		ASTM D7647	>80	80	6	---
Particles >21µm		ASTM D7647	>20	● 36	1	---
Particles >38µm		ASTM D7647	>4	● 7	0	---
Particles >71µm		ASTM D7647	>3	1	0	---
Oil Cleanliness		ISO 4406 (c)	>18/16/13	17/16/13	15/13/10	---

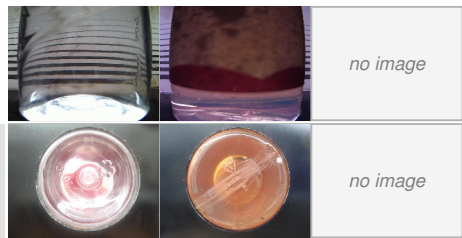


FUEL REPORT

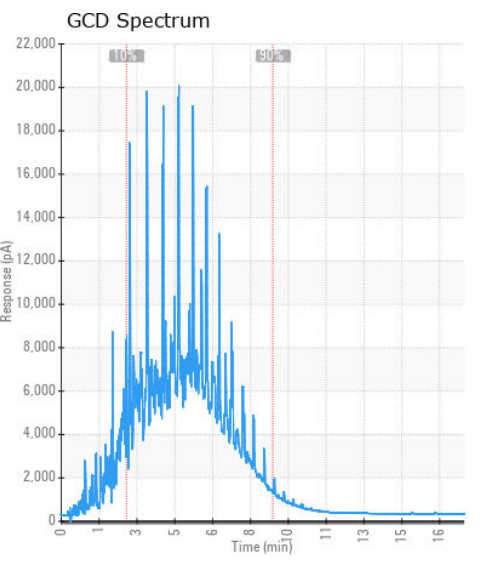
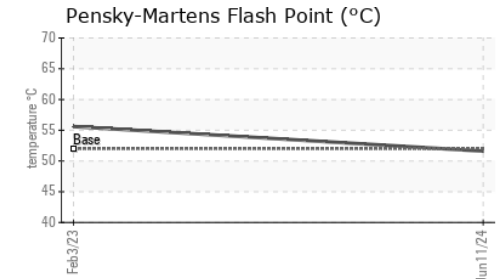
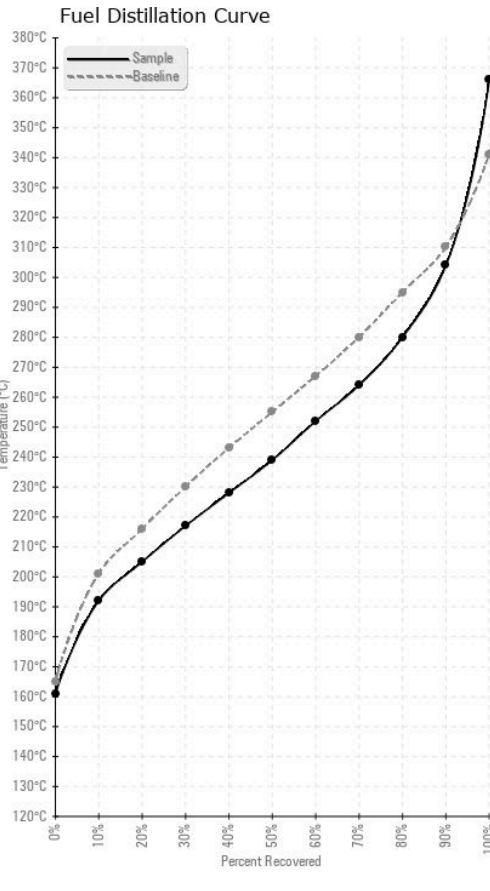


HEAVY METALS	method	limit/base	current	history1	history2
Aluminum	ppm	ASTM D5185(m)	<0.1	0	0
Nickel	ppm	ASTM D5185(m)	<0.1	0	0
Lead	ppm	ASTM D5185(m)	<0.1	0	0
Vanadium	ppm	ASTM D5185(m)	<0.1	0	0
Iron	ppm	ASTM D5185(m)	<0.1	<1	<1
Calcium	ppm	ASTM D5185(m)	<0.1	0	0
Magnesium	ppm	ASTM D5185(m)	<0.1	0	0
Phosphorus	ppm	ASTM D5185(m)	<0.1	<1	<1
Zinc	ppm	ASTM D5185(m)	<0.1	4	4

SAMPLE IMAGES	method	limit/base	current	history1	history2
Color					
Bottom					



GRAPHS



Laboratory : WearCheck - C8-1175 Appleby Line, Burlington, ON L7L 5H9
Sample No. : CU0021728
Lab Number : 02643555
Unique Number : 5801094
Test Package : FUEL (Additional Tests: CC Flash, PrtCount)

CUMMINS EASTERN CANADA LP
 321 DOAK ROAD
 FREDERICTON, NB
 CA E3C 2E7
 Contact: Shelley Brawn
 Shelley.Brawn@Cummins.com
 T: (506)451-1929
 F: (506)451-1927

To discuss this sample report, contact Customer Service at 1-800-268-2131.
 Test denoted (*) outside scope of accreditation, (m) method modified, (e) tested at external lab.
 Validity of results and interpretation are based on the sample and information as supplied.