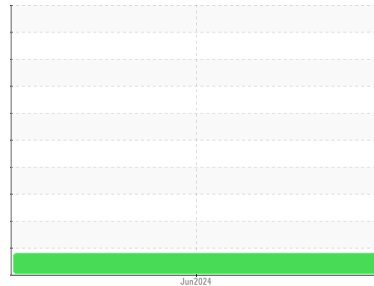


FUEL REPORT

Sample Rating Trend



ISO



Area
[6100316161]
Machine Id
906991V1453893
Component
Diesel Fuel
Fluid
No.2 DIESEL FUEL (ULTRALOW SULPHUR) (--- GAL)

DIAGNOSIS

Recommendation

Laboratory test indicate that this fuel is suitable for use and meets all test requirements. We advise that you filter this fluid before use. We recommend you service the filters on this component. Resample at the next service interval to monitor.

Contaminants

There is a light amount of silt (particulates < 14 microns in size) present in the fuel. The water content is negligible.

Fuel Condition

All laboratory tests indicate that this sample meets specifications for No.2 ultra-low-sulfur diesel fuel (US EPA/CGSB-3.517-3 type B).

SAMPLE INFORMATION		method	limit/base	current	history1	history2
Sample Number	Client Info			WA0021409	---	---
Sample Date	Client Info			19 Jun 2024	---	---
Machine Age	hrs	Client Info		0	---	---
Sample Status				ATTENTION	---	---

PHYSICAL PROPERTIES		method	limit/base	current	history1	history2
Specific Gravity		ASTM D1298*	0.839	0.834	---	---
Fuel Color	text	Visual Screen*	Yllow	Yllow	---	---
Visc @ 40°C	cSt	ASTM D7279(m)	3.0	2.4	---	---
Pensky-Martens Flash Point	°C	ASTM D7215*	52	52.9	---	---

SULFUR CONTENT		method	limit/base	current	history1	history2
Sulfur	ppm	ASTM D5185(m)	10	7	---	---

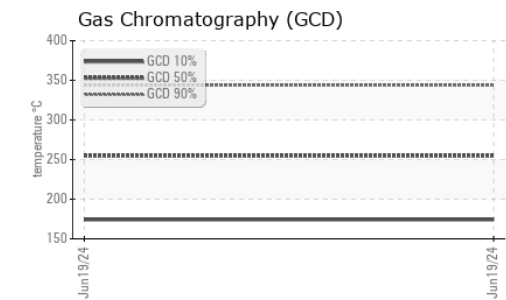
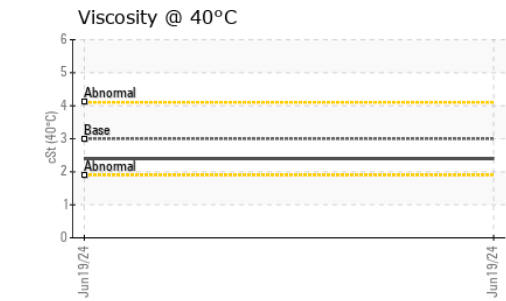
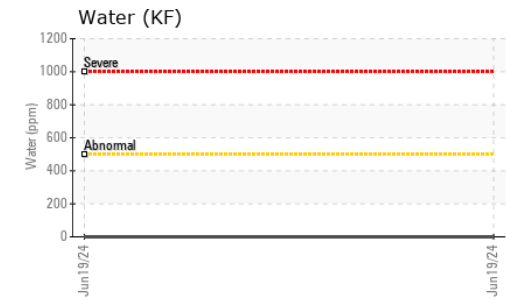
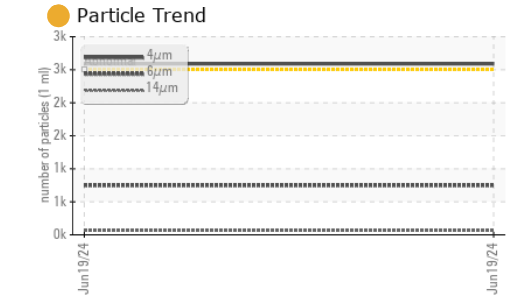
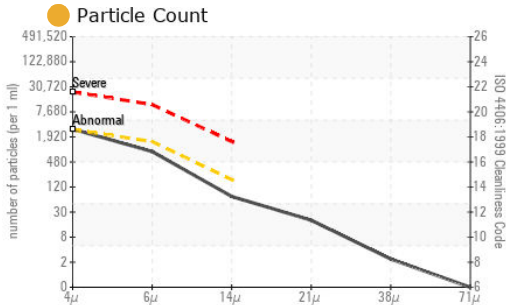
DISTILLATION		method	limit/base	current	history1	history2
Initial Boiling Point	°C	ASTM D2887*	165	163	---	---
5% Distillation Point	°C	ASTM D2887*		186	---	---
10% Distill Point	°C	ASTM D2887*	201	196	---	---
15% Distillation Point	°C	ASTM D2887*		204	---	---
20% Distill Point	°C	ASTM D2887*	216	211	---	---
30% Distill Point	°C	ASTM D2887*	230	226	---	---
40% Distill Point	°C	ASTM D2887*	243	239	---	---
50% Distill Point	°C	ASTM D2887*	255	253	---	---
60% Distill Point	°C	ASTM D2887*	267	268	---	---
70% Distill Point	°C	ASTM D2887*	280	283	---	---
80% Distill Point	°C	ASTM D2887*	295	300	---	---
85% Distillation Point	°C	ASTM D2887*		313	---	---
90% Distill Point	°C	ASTM D2887*	310	326	---	---
95% Distillation Point	°C	ASTM D2887*		349	---	---
Final Boiling Point	°C	ASTM D2887*	341	386	---	---

IGNITION QUALITY		method	limit/base	current	history1	history2
API Gravity		ASTM D1298*	37.7	38	---	---
Cetane Index		ASTM D4737*	<40.0	49	---	---

CONTAMINANTS		method	limit/base	current	history1	history2
Silicon	ppm	ASTM D5185(m)	<1.0	0	---	---
Sodium	ppm	ASTM D5185(m)	<0.1	0	---	---
Potassium	ppm	ASTM D5185(m)	<0.1	0	---	---
Water	%	ASTM D6304*	<0.05	0.00	---	---
ppm Water	ppm	ASTM D6304*	<500	0	---	---

FLUID CLEANLINESS		method	limit/base	current	history1	history2
Particles >4µm		ASTM D7647	>2500	2589	---	---
Particles >6µm		ASTM D7647	>1300	749	---	---
Particles >14µm		ASTM D7647	>160	63	---	---
Particles >21µm		ASTM D7647	>40	17	---	---
Particles >38µm		ASTM D7647	>10	2	---	---
Particles >71µm		ASTM D7647	>3	0	---	---
Oil Cleanliness		ISO 4406 (c)	>18/17/14	19/17/13	---	---

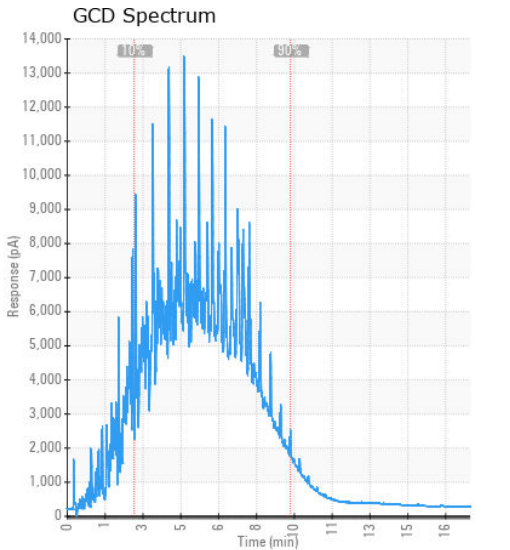
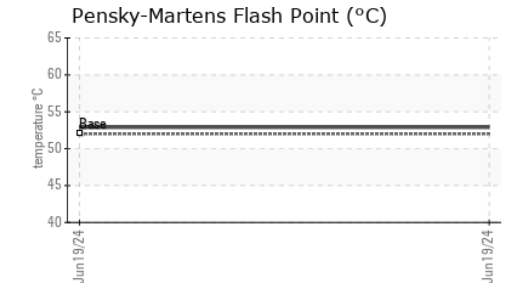
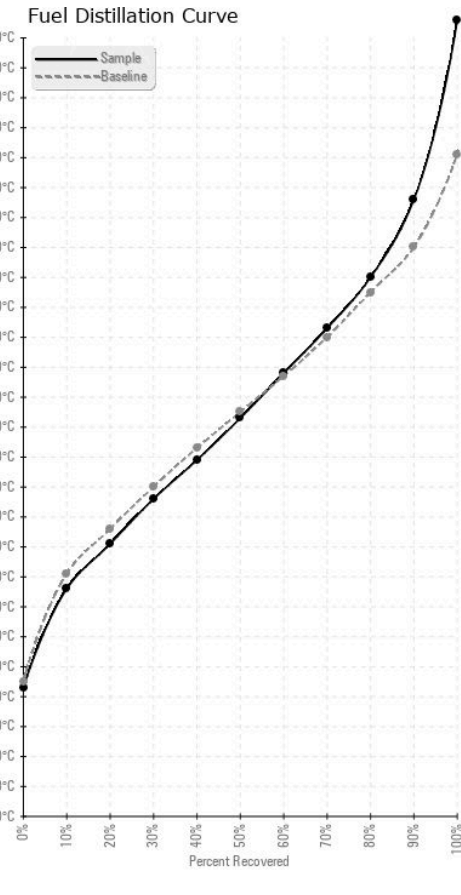
FUEL REPORT



HEAVY METALS	method	limit/base	current	history1	history2	
Aluminum	ppm	ASTM D5185(m)	<0.1	0	---	---
Nickel	ppm	ASTM D5185(m)	<0.1	0	---	---
Lead	ppm	ASTM D5185(m)	<0.1	0	---	---
Vanadium	ppm	ASTM D5185(m)	<0.1	0	---	---
Iron	ppm	ASTM D5185(m)	<0.1	0	---	---
Calcium	ppm	ASTM D5185(m)	<0.1	0	---	---
Magnesium	ppm	ASTM D5185(m)	<0.1	0	---	---
Phosphorus	ppm	ASTM D5185(m)	<0.1	<1	---	---
Zinc	ppm	ASTM D5185(m)	<0.1	0	---	---

SAMPLE IMAGES	method	limit/base	current	history1	history2
Color				no image	no image
Bottom				no image	no image

GRAPHS



Laboratory : WearCheck - C8-1175 Appleby Line, Burlington, ON L7L 5H9
Sample No. : WA0021409
Lab Number : 02643557
Unique Number : 5801096
Test Package : FUEL (Additional Tests: CC Flash, PrtCount)

CUMMINS EASTERN CANADA LP
 321 DOAK ROAD
 FREDERICTON, NB
 CA E3C 2E7

Received : 21 Jun 2024
Tested : 25 Jun 2024
Diagnosed : 25 Jun 2024 - Kevin Marson
 To discuss this sample report, contact Customer Service at 1-800-268-2131.
 Test denoted (*) outside scope of accreditation, (m) method modified, (e) tested at external lab.
 Validity of results and interpretation are based on the sample and information as supplied.

Contact: Shelley Brawn
 Shelley.Brawn@Cummins.com
 T: (506)451-1929
 F: (506)451-1927