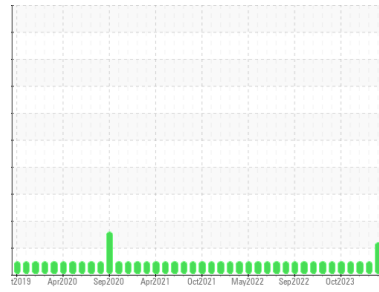




FILTER DEBRIS ANALYSIS

Area
Filter
 Machine Id
5-3-2304 - West Vacuum Filter
 Component
Filter
 Fluid
 {not provided} (--- GAL)

Sample Rating Trend



WEAR PARTICLES



DIAGNOSIS

Recommendation

We recommend that you drain the filter the oil in this unit if this has not already been done. We recommend an early resample to monitor this condition.

Wear Particles

Wear particle analysis indicates that the nonferrous cutting particles are abnormal. There was one very long brass/bronze cutting wear particle present in the filter.

Contaminants

The filter contained only normal levels of contaminants, and debris. All filter contaminant levels are normal.

SAMPLE INFORMATION

	method	limit/base	current	history1	history2
Sample Number	Client Info		PP	PP	WC
Sample Date	Client Info		20 Jun 2024	16 May 2024	26 Feb 2024
Machine Age	hrs	Client Info	0	0	0
Oil Age	hrs	Client Info	0	0	0
Oil Changed	Client Info		N/A	N/A	N/A
Sample Status			ABNORMAL	NORMAL	NORMAL

CONTAMINATION

	method	limit/base	current	history1	history2
Water	WC Method		NEG	NEG	NEG

FILTER WEAR PARTICLES

	method	limit/base	current	history1	history2
Ferrous Rubbing	Scale 0-10 ASTM D7684*		1	1	1
Ferrous Sliding	Scale 0-10 ASTM D7684*				
Ferrous Cutting	Scale 0-10 ASTM D7684*				
Ferrous Rolling	Scale 0-10 ASTM D7684*				
Ferrous Break-in	Scale 0-10 ASTM D7684*				
Ferrous Spheres	Scale 0-10 ASTM D7684*				
Ferrous Black Oxides	Scale 0-10 ASTM D7684*				
Ferrous Red Oxides	Scale 0-10 ASTM D7684*				1
Ferrous Corrosive	Scale 0-10 ASTM D7684*				
Ferrous Other	Scale 0-10 ASTM D7684*				
Nonferrous Rubbing	Scale 0-10 ASTM D7684*		2		1
Nonferrous Sliding	Scale 0-10 ASTM D7684*				
Nonferrous Cutting	Scale 0-10 ASTM D7684*		3		
Nonferrous Rolling	Scale 0-10 ASTM D7684*				
Nonferrous Other	Scale 0-10 ASTM D7684*				

FILTER CONTAMINANTS

	method	limit/base	current	history1	history2
Sand/Dirt	Scale 0-10 ASTM D7684*		2	2	1
Fibres	Scale 0-10 ASTM D7684*		2	2	1
Spheres	Scale 0-10 ASTM D7684*				
Other	Scale 0-10 ASTM D7684*				
Patch Weight	mg	ASTM D7684*	21	112	28

SAMPLE IMAGES

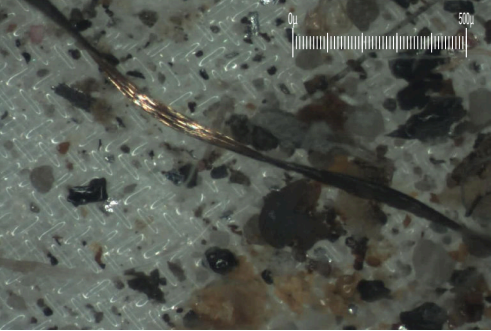
	method	limit/base	current	history1	history2
Color				no image	no image
Bottom				no image	no image

Area
Filter
Machine Id
5-3-2304 - West Vacuum Filter
Component
Filter
Fluid
{not provided} (--- GAL)

Magn: 10x Illum: RW



Magn: 60x Illum: RW



WEAR

Wear particle analysis indicates that the nonferrous cutting particles are abnormal. There was one very long brass/bronze cutting wear particle present in the filter.