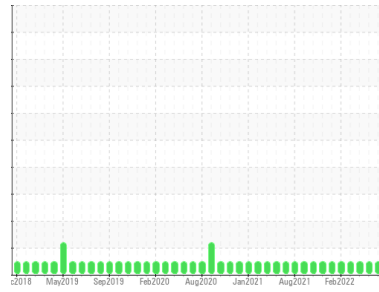




FILTER DEBRIS ANALYSIS

Area
Filter [1331491]
 Machine Id
5-3-2307 High Pressure Circulation Pump
 Component
Filter
 Fluid
 {not provided} (--- GAL)

Sample Rating Trend



NORMAL



DIAGNOSIS

Recommendation

Resample at the next service interval to monitor.

Wear Particles

The filter contained no appreciable wear particles. All filter wear levels are normal.

Contaminants

The filter contained only normal levels of contaminants, and debris. All filter contaminant levels are normal.

SAMPLE INFORMATION

	method	limit/base	current	history1	history2
Sample Number	Client Info		PP	WC0729065	WC
Sample Date	Client Info		20 Jun 2024	20 Dec 2022	02 Jun 2022
Machine Age	hrs	Client Info	0	0	0
Oil Age	hrs	Client Info	0	0	0
Oil Changed	Client Info		N/A	N/A	N/A
Sample Status			NORMAL	NORMAL	NORMAL

CONTAMINATION

	method	limit/base	current	history1	history2
Water	WC Method		NEG	NEG	NEG

FILTER WEAR PARTICLES

	method	limit/base	current	history1	history2
Ferrous Rubbing	Scale 0-10 ASTM D7684*		1	1	1
Ferrous Sliding	Scale 0-10 ASTM D7684*				
Ferrous Cutting	Scale 0-10 ASTM D7684*				
Ferrous Rolling	Scale 0-10 ASTM D7684*		1	1	1
Ferrous Break-in	Scale 0-10 ASTM D7684*				
Ferrous Spheres	Scale 0-10 ASTM D7684*				
Ferrous Black Oxides	Scale 0-10 ASTM D7684*				
Ferrous Red Oxides	Scale 0-10 ASTM D7684*				1
Ferrous Corrosive	Scale 0-10 ASTM D7684*				
Ferrous Other	Scale 0-10 ASTM D7684*				
Nonferrous Rubbing	Scale 0-10 ASTM D7684*		1		
Nonferrous Sliding	Scale 0-10 ASTM D7684*				
Nonferrous Cutting	Scale 0-10 ASTM D7684*				
Nonferrous Rolling	Scale 0-10 ASTM D7684*		1	1	1
Nonferrous Other	Scale 0-10 ASTM D7684*				

FILTER CONTAMINANTS

	method	limit/base	current	history1	history2
Sand/Dirt	Scale 0-10 ASTM D7684*		2	1	1
Fibres	Scale 0-10 ASTM D7684*		1	1	1
Spheres	Scale 0-10 ASTM D7684*				
Other	Scale 0-10 ASTM D7684*				
Patch Weight	mg	ASTM D7684*	51	49	17

SAMPLE IMAGES

	method	limit/base	current	history1	history2
Color				no image	no image
Bottom				no image	no image

Area

Filter [1331491]

Machine Id

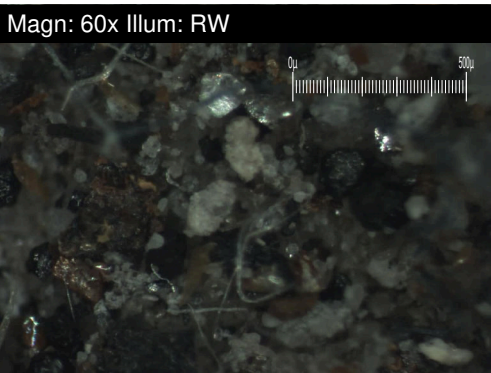
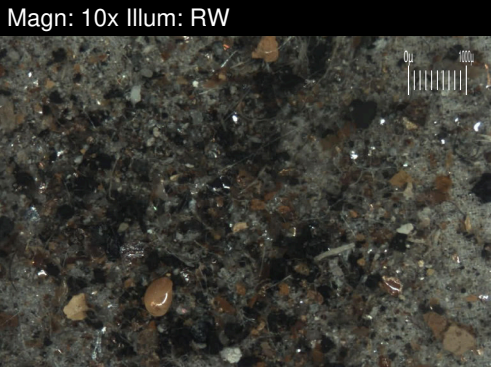
5-3-2307 High Pressure Circulation Pump

Component

Filter

Fluid

{not provided} (--- GAL)



WEAR

The filter contained no appreciable wear particles. All filter wear levels are normal.