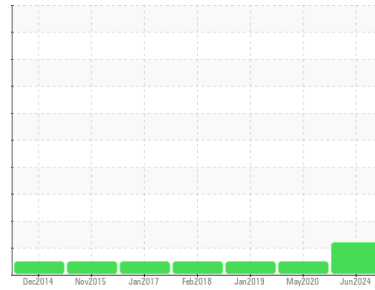


FUEL REPORT

Sample Rating Trend



ISO



Area
[6100298878]
 Machine Id
PE6068T234241
 Component
Diesel Fuel
 Fluid
No.2 DIESEL FUEL (LOW-SULPHUR) (--- GAL)

DIAGNOSIS

Recommendation

Laboratory test indicate that this fuel is suitable for use and meets all test requirements. We advise that you filter this fluid before use. We recommend you service the filters on this component. Resample at the next service interval to monitor.

Contaminants

There is a light amount of silt (particulates < 14 microns in size) present in the fuel. The water content is negligible.

Fuel Condition

All laboratory tests indicate that this sample meets specifications for No.2 ultra-low-sulfur diesel fuel (US EPA/CGSB-3.517-3 type B).

SAMPLE INFORMATION		method	limit/base	current	history1	history2
Sample Number	Client Info			WA0021959	WA0014835	WA0010079
Sample Date	Client Info			20 Jun 2024	13 May 2020	09 Jan 2019
Machine Age	hrs	Client Info		0	267	235
Sample Status				ATTENTION	NORMAL	NORMAL

PHYSICAL PROPERTIES		method	limit/base	current	history1	history2
Specific Gravity		ASTM D1298*	0.839	0.838	0.836	0.840
Fuel Color	text	Visual Screen*	Yllow	Yllow	Yllow	Yllow
Visc @ 40°C	cSt	ASTM D7279(m)	3.0	2.6	2.3	2.3
Pensky-Martens Flash Point	°C	ASTM D7215*	52	61.8	59	58

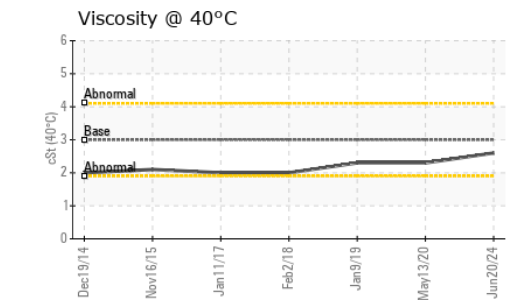
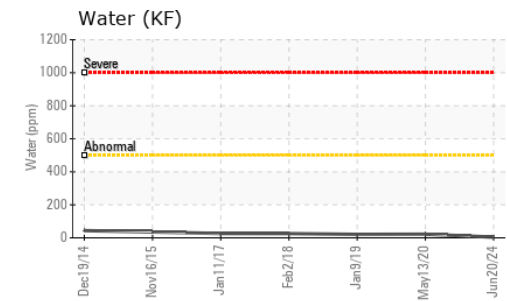
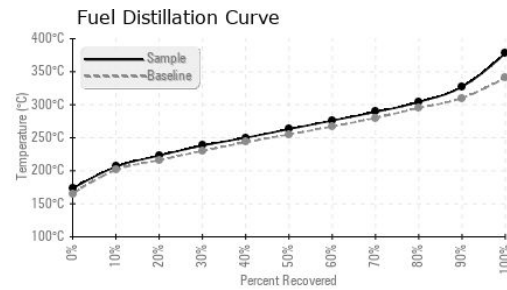
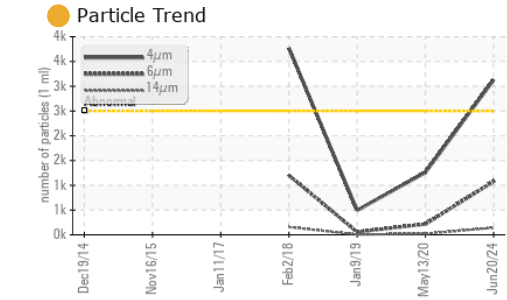
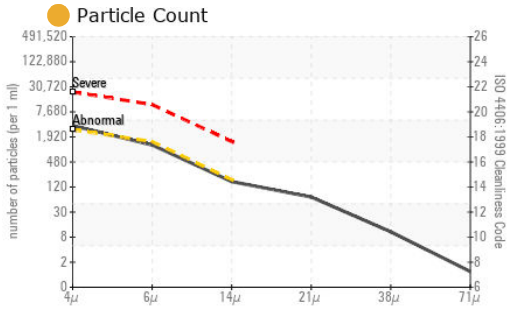
SULFUR CONTENT		method	limit/base	current	history1	history2
Sulfur	ppm	ASTM D5185(m)	250	11	31	24

DISTILLATION		method	limit/base	current	history1	history2
Initial Boiling Point	°C	ASTM D2887*	165	173	161	167
5% Distillation Point	°C	ASTM D2887*		195	186	191
10% Distill Point	°C	ASTM D2887*	201	206	198	199
15% Distillation Point	°C	ASTM D2887*		215	205	207
20% Distill Point	°C	ASTM D2887*	216	223	212	214
30% Distill Point	°C	ASTM D2887*	230	238	225	226
40% Distill Point	°C	ASTM D2887*	243	250	237	238
50% Distill Point	°C	ASTM D2887*	255	263	248	250
60% Distill Point	°C	ASTM D2887*	267	276	260	262
70% Distill Point	°C	ASTM D2887*	280	289	274	275
80% Distill Point	°C	ASTM D2887*	295	304	289	291
85% Distillation Point	°C	ASTM D2887*		316	299	301
90% Distill Point	°C	ASTM D2887*	310	327	311	313
95% Distillation Point	°C	ASTM D2887*		346	329	333
Final Boiling Point	°C	ASTM D2887*	341	378	341	342
Distillation Residue	%	ASTM D86(e)*	3.0	---	1.4	1.4
Distillation Loss	%	ASTM D86(e)*	3.0	---	0.5	1.0

IGNITION QUALITY		method	limit/base	current	history1	history2
API Gravity		ASTM D1298*	37.7	37	37.8	37.0
Cetane Index		ASTM D4737*	<40.0	50	47.3	46.1

CONTAMINANTS		method	limit/base	current	history1	history2
Silicon	ppm	ASTM D5185(m)	<1.0	0	0	0
Sodium	ppm	ASTM D5185(m)	<0.1	0	<1	<1
Potassium	ppm	ASTM D5185(m)	<0.1	0	0	0
Water	%	ASTM D6304*	<0.05	0.001	0.002	0.002
ppm Water	ppm	ASTM D6304*	<500	4	22.0	20.8

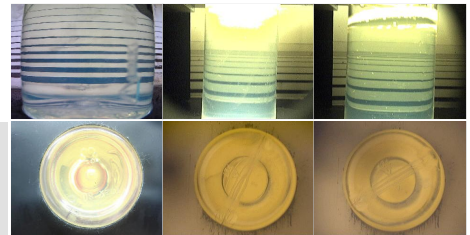
FUEL REPORT



FLUID CLEANLINESS	method	limit/base	current	history1	history2
Particles >4µm	ASTM D7647	>2500	● 3127	1258	494
Particles >6µm	ASTM D7647	>1300	1077	217	56
Particles >14µm	ASTM D7647	>160	143	21	5
Particles >21µm	ASTM D7647	>40	● 61	9	2
Particles >38µm	ASTM D7647	>10	9	2	0
Particles >71µm	ASTM D7647	>3	1	0	0
Oil Cleanliness	ISO 4406 (c)	>18/17/14	● 19/17/14	17/15/12	16/13/10

HEAVY METALS	method	limit/base	current	history1	history2
Aluminum	ppm ASTM D5185(m)	<0.1	0	0	0
Nickel	ppm ASTM D5185(m)	<0.1	0	0	0
Lead	ppm ASTM D5185(m)	<0.1	0	0	0
Vanadium	ppm ASTM D5185(m)	<0.1	0	0	0
Iron	ppm ASTM D5185(m)	<0.1	0	<1	0
Calcium	ppm ASTM D5185(m)	<0.1	0	0	0
Magnesium	ppm ASTM D5185(m)	<0.1	0	0	0
Phosphorus	ppm ASTM D5185(m)	<0.1	0	0	0
Zinc	ppm ASTM D5185(m)	<0.1	<1	0	0

SAMPLE IMAGES	method	limit/base	current	history1	history2
Color					
Bottom					



Laboratory : WearCheck - C8-1175 Appleby Line, Burlington, ON L7L 5H9
Sample No. : WA0021959 **Received** : 26 Jun 2024
Lab Number : **02644262** **Tested** : 02 Jul 2024
Unique Number : 5801801 **Diagnosed** : 02 Jul 2024 - Kevin Marson
Test Package : FUEL (Additional Tests: CC Flash, PrtCount)

To discuss this sample report, contact Customer Service at 1-800-268-2131.
 Test denoted (*) outside scope of accreditation, (m) method modified, (e) tested at external lab.
 Validity of results and interpretation are based on the sample and information as supplied.

Wajax Power Systems
 70 Raddall Avenue
 Dartmouth, NS
 CA B3B 1T7
 Contact: Danelle Hoffman
 dhoffman@wajax.com
 T: (902)468-6200
 F: (902)468-3325