



# FILTER DEBRIS ANALYSIS

## Sample Rating Trend



**NORMAL**



Machine Id  
**NISSAN 24108-B**  
 Component  
**Filter**  
 Fluid  
**{not provided} (--- GAL)**

### DIAGNOSIS

#### Recommendation

We understand that this sample is for warranty/insurance purposes. Diagnostician's Note: The majority of filter material was burnt filter paper consistent with a vehicle fire. The other material in the filter (wear particles, dirt) was not out of the ordinary for a normal oil service interval.

#### Wear Particles

The filter contained no appreciable wear particles. All filter wear levels are normal.

#### Contaminants

The filter contained only normal levels of contaminants, and debris. All filter contaminant levels are normal.

SAMPLE INFORMATION		method	limit/base	current	history1	history2
Sample Number	Client Info			<b>WC0959462</b>	---	---
Sample Date	Client Info			<b>20 Jun 2024</b>	---	---
Machine Age	hrs	Client Info		<b>0</b>	---	---
Oil Age	hrs	Client Info		<b>0</b>	---	---
Oil Changed	Client Info			<b>N/A</b>	---	---
Sample Status				<b>NORMAL</b>	---	---

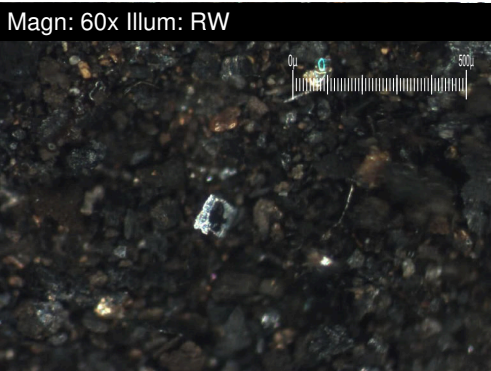
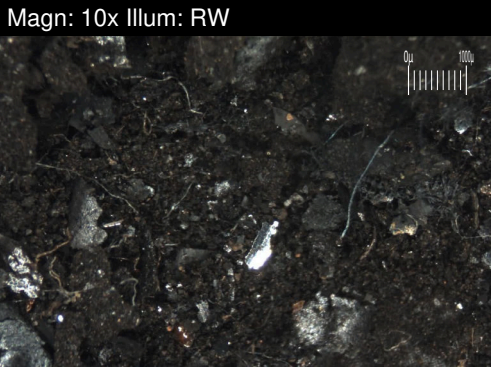
CONTAMINATION		method	limit/base	current	history1	history2
Water	WC Method			<b>NEG</b>	---	---

FILTER WEAR PARTICLES		method	limit/base	current	history1	history2
Ferrous Rubbing	Scale 0-10	ASTM D7684*		<b>2</b>		
Ferrous Sliding	Scale 0-10	ASTM D7684*				
Ferrous Cutting	Scale 0-10	ASTM D7684*				
Ferrous Rolling	Scale 0-10	ASTM D7684*		<b>2</b>		
Ferrous Break-in	Scale 0-10	ASTM D7684*				
Ferrous Spheres	Scale 0-10	ASTM D7684*				
Ferrous Black Oxides	Scale 0-10	ASTM D7684*				
Ferrous Red Oxides	Scale 0-10	ASTM D7684*				
Ferrous Corrosive	Scale 0-10	ASTM D7684*				
Ferrous Other	Scale 0-10	ASTM D7684*				
Nonferrous Rubbing	Scale 0-10	ASTM D7684*		<b>2</b>		
Nonferrous Sliding	Scale 0-10	ASTM D7684*				
Nonferrous Cutting	Scale 0-10	ASTM D7684*				
Nonferrous Rolling	Scale 0-10	ASTM D7684*		<b>2</b>		
Nonferrous Other	Scale 0-10	ASTM D7684*				

FILTER CONTAMINANTS		method	limit/base	current	history1	history2
Sand/Dirt	Scale 0-10	ASTM D7684*		<b>2</b>		
Fibres	Scale 0-10	ASTM D7684*				
Spheres	Scale 0-10	ASTM D7684*				
Other	Scale 0-10	ASTM D7684*		<b>4</b>		
Patch Weight	mg	ASTM D7684*		<b>293</b>	---	---

SAMPLE IMAGES		method	limit/base	current	history1	history2
Color					<i>no image</i>	<i>no image</i>
Bottom					<i>no image</i>	<i>no image</i>

Machine Id  
**NISSAN 24108-B**  
Component  
**Filter**  
Fluid  
{not provided} (--- GAL)



**WEAR**

The filter contained no appreciable wear particles. All filter wear levels are normal.