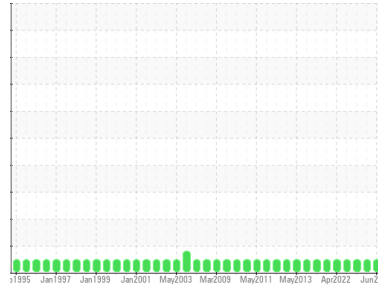




# OIL ANALYSIS REPORT

Sample Rating Trend



**NORMAL**



Area

**72 MACHINE ROOM**

Machine Id

**#3 Dryer Section (Reducer) (S/N 725111)**

Component

**Gear Reducer**

Fluid

**ESSO SPARTAN EP 220 (20 GAL)**

## DIAGNOSIS

### Recommendation

Resample at the next service interval to monitor.

### Wear

All component wear rates are normal.

### Contamination

There is no indication of any contamination in the oil.

### Fluid Condition

The AN level is acceptable for this fluid. The condition of the oil is suitable for further service.

## SAMPLE INFORMATION

| method        | limit/base      | current            | history1    | history2    |
|---------------|-----------------|--------------------|-------------|-------------|
| Sample Number | Client Info     | <b>WC</b>          | WC          | WC0789981   |
| Sample Date   | Client Info     | <b>25 Jun 2024</b> | 26 Dec 2023 | 08 May 2023 |
| Machine Age   | hrs Client Info | <b>0</b>           | 0           | 0           |
| Oil Age       | hrs Client Info | <b>0</b>           | 0           | 0           |
| Oil Changed   | Client Info     | <b>N/A</b>         | N/A         | N/A         |
| Sample Status |                 | <b>NORMAL</b>      | NORMAL      | NORMAL      |

## CONTAMINATION

| method | limit/base     | current    | history1 | history2 |
|--------|----------------|------------|----------|----------|
| Water  | WC Method >0.2 | <b>NEG</b> | NEG      | NEG      |

## WEAR METALS

| method    | limit/base             | current      | history1 | history2 |
|-----------|------------------------|--------------|----------|----------|
| PQ        | ASTM D8184*            | <b>0</b>     | 0        | 0        |
| Iron      | ppm ASTM D5185(m) >250 | <b>13</b>    | 14       | 13       |
| Chromium  | ppm ASTM D5185(m) >5   | <b>&lt;1</b> | <1       | <1       |
| Nickel    | ppm ASTM D5185(m) >5   | <b>&lt;1</b> | <1       | <1       |
| Titanium  | ppm ASTM D5185(m)      | <b>0</b>     | 0        | 0        |
| Silver    | ppm ASTM D5185(m)      | <b>0</b>     | 0        | 0        |
| Aluminum  | ppm ASTM D5185(m) >20  | <b>&lt;1</b> | <1       | <1       |
| Lead      | ppm ASTM D5185(m) >50  | <b>30</b>    | 29       | 28       |
| Copper    | ppm ASTM D5185(m) >50  | <b>&lt;1</b> | <1       | <1       |
| Tin       | ppm ASTM D5185(m) >5   | <b>&lt;1</b> | <1       | <1       |
| Antimony  | ppm ASTM D5185(m) >5   | <b>0</b>     | 0        | 0        |
| Vanadium  | ppm ASTM D5185(m)      | <b>0</b>     | 0        | 0        |
| Beryllium | ppm ASTM D5185(m)      | <b>0</b>     | 0        | 0        |
| Cadmium   | ppm ASTM D5185(m)      | <b>0</b>     | 0        | 0        |

## ADDITIVES

| method     | limit/base            | current      | history1 | history2 |
|------------|-----------------------|--------------|----------|----------|
| Boron      | ppm ASTM D5185(m) .5  | <b>7</b>     | 8        | 7        |
| Barium     | ppm ASTM D5185(m)     | <b>&lt;1</b> | 0        | <1       |
| Molybdenum | ppm ASTM D5185(m) 0   | <b>0</b>     | 0        | 0        |
| Manganese  | ppm ASTM D5185(m)     | <b>0</b>     | 0        | 0        |
| Magnesium  | ppm ASTM D5185(m) 0   | <b>&lt;1</b> | <1       | <1       |
| Calcium    | ppm ASTM D5185(m) 1.7 | <b>9</b>     | 10       | 9        |
| Phosphorus | ppm ASTM D5185(m) 250 | <b>295</b>   | 310      | 334      |
| Zinc       | ppm ASTM D5185(m) .3  | <b>15</b>    | 14       | 12       |
| Sulfur     | ppm ASTM D5185(m)     | <b>12774</b> | 13574    | 13443    |
| Lithium    | ppm ASTM D5185(m)     | <b>&lt;1</b> | <1       | <1       |

## CONTAMINANTS

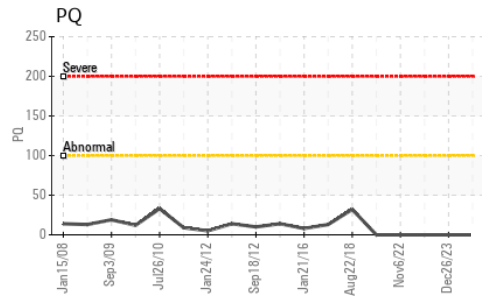
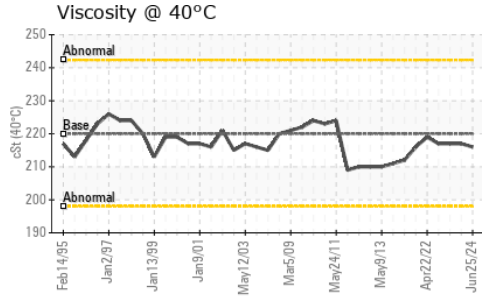
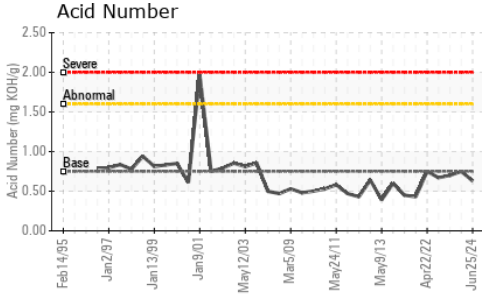
| method    | limit/base            | current      | history1 | history2 |
|-----------|-----------------------|--------------|----------|----------|
| Silicon   | ppm ASTM D5185(m) >60 | <b>0</b>     | <1       | <1       |
| Sodium    | ppm ASTM D5185(m)     | <b>&lt;1</b> | <1       | <1       |
| Potassium | ppm ASTM D5185(m) >20 | <b>&lt;1</b> | <1       | <1       |

## FLUID DEGRADATION

| method           | limit/base               | current     | history1 | history2 |
|------------------|--------------------------|-------------|----------|----------|
| Acid Number (AN) | mg KOH/g ASTM D974* 0.75 | <b>0.63</b> | 0.75     | 0.70     |



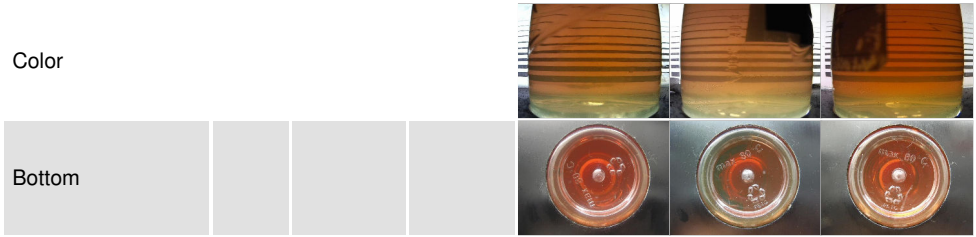
# OIL ANALYSIS REPORT



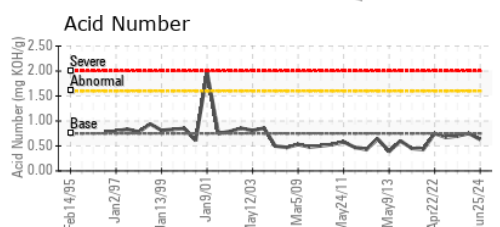
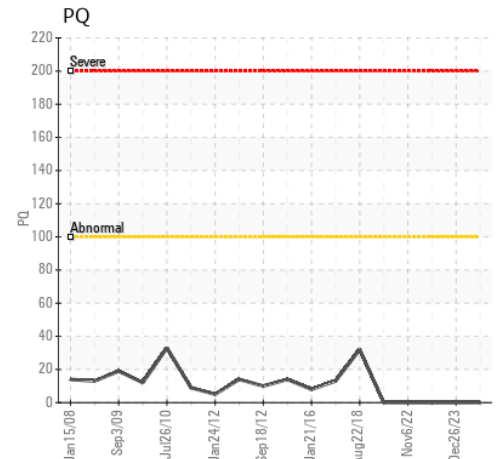
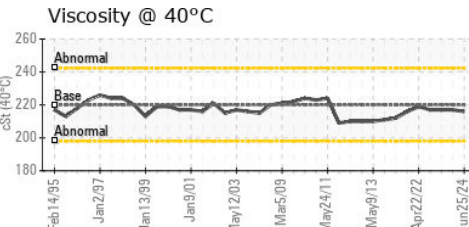
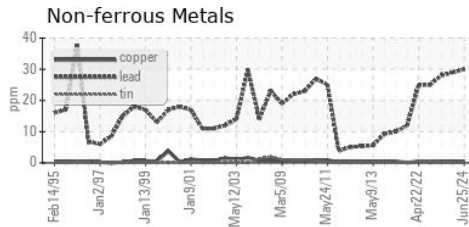
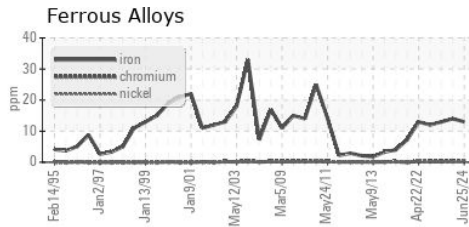
| VISUAL           | method | limit/base | current | history1 | history2 |
|------------------|--------|------------|---------|----------|----------|
| White Metal      | scalar | Visual*    | NONE    | NONE     | NONE     |
| Yellow Metal     | scalar | Visual*    | NONE    | NONE     | NONE     |
| Precipitate      | scalar | Visual*    | NONE    | NONE     | NONE     |
| Silt             | scalar | Visual*    | NONE    | NONE     | NONE     |
| Debris           | scalar | Visual*    | NONE    | NONE     | NONE     |
| Sand/Dirt        | scalar | Visual*    | NONE    | NONE     | NONE     |
| Appearance       | scalar | Visual*    | NORML   | NORML    | NORML    |
| Odor             | scalar | Visual*    | NORML   | NORML    | NORML    |
| Emulsified Water | scalar | Visual*    | >0.2    | NEG      | NEG      |
| Free Water       | scalar | Visual*    |         | NEG      | NEG      |

| FLUID PROPERTIES | method | limit/base    | current | history1 | history2 |
|------------------|--------|---------------|---------|----------|----------|
| Visc @ 40°C      | cSt    | ASTM D7279(m) | 220     | 216      | 217      |

| SAMPLE IMAGES | method | limit/base | current | history1 | history2 |
|---------------|--------|------------|---------|----------|----------|
|---------------|--------|------------|---------|----------|----------|



## GRAPHS



**Laboratory** : WearCheck - C8-1175 Appleby Line, Burlington, ON L7L 5H9  
**Sample No.** : WC  
**Lab Number** : 02644969  
**Unique Number** : 5802508  
**Test Package** : IND 2

**AV GROUP NB INC.**  
 103 PINDER ROAD,, NACKAWIC MILL  
 NACKAWIC, NB  
 CA E6G 1W4  
 Contact: Basil Fadulalla  
 basil.fadulalla@adityabirla.com

To discuss this sample report, contact Customer Service at 1-800-268-2131.  
 Test denoted (\*) outside scope of accreditation, (m) method modified, (e) tested at external lab.  
 Validity of results and interpretation are based on the sample and information as supplied.