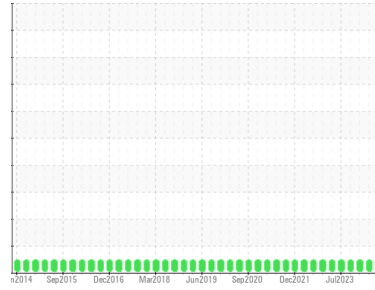




# OIL ANALYSIS REPORT

## Sample Rating Trend



**NORMAL**



Area  
**3 Calender Line**  
 Machine Id  
**42-0080 Dropmill**  
 Component  
**Gearbox**  
 Fluid  
**SUNOCO SUNEPA 320 (100 LTR)**

### DIAGNOSIS

#### Recommendation

Resample at the next service interval to monitor.

#### Wear

All component wear rates are normal.

#### Contamination

There is no indication of any contamination in the oil.

#### Fluid Condition

The condition of the oil is acceptable for the time in service.

### SAMPLE INFORMATION

	method	limit/base	current	history1	history2
Sample Number	Client Info		<b>WC0892269</b>	WC0837293	WC0808303
Sample Date	Client Info		<b>06 Jun 2024</b>	20 Mar 2024	03 Jan 2024
Machine Age	hrs	Client Info	<b>0</b>	0	0
Oil Age	hrs	Client Info	<b>0</b>	0	0
Oil Changed	Client Info		<b>N/A</b>	N/A	N/A
Sample Status			<b>NORMAL</b>	NORMAL	NORMAL

### CONTAMINATION

	method	limit/base	current	history1	history2
Water	WC Method	>0.2	<b>NEG</b>	NEG	NEG

### WEAR METALS

	method	limit/base	current	history1	history2	
Iron	ppm	ASTM D5185(m)	>200	<b>27</b>	28	33
Chromium	ppm	ASTM D5185(m)	>15	<b>&lt;1</b>	<1	1
Nickel	ppm	ASTM D5185(m)	>15	<b>&lt;1</b>	0	<1
Titanium	ppm	ASTM D5185(m)		<b>0</b>	0	0
Silver	ppm	ASTM D5185(m)		<b>0</b>	0	0
Aluminum	ppm	ASTM D5185(m)	>25	<b>&lt;1</b>	<1	<1
Lead	ppm	ASTM D5185(m)	>100	<b>0</b>	0	0
Copper	ppm	ASTM D5185(m)	>200	<b>&lt;1</b>	<1	<1
Tin	ppm	ASTM D5185(m)	>25	<b>0</b>	0	0
Antimony	ppm	ASTM D5185(m)	>5	<b>0</b>	0	0
Vanadium	ppm	ASTM D5185(m)		<b>0</b>	0	0
Beryllium	ppm	ASTM D5185(m)		<b>0</b>	0	0
Cadmium	ppm	ASTM D5185(m)		<b>0</b>	0	0

### ADDITIVES

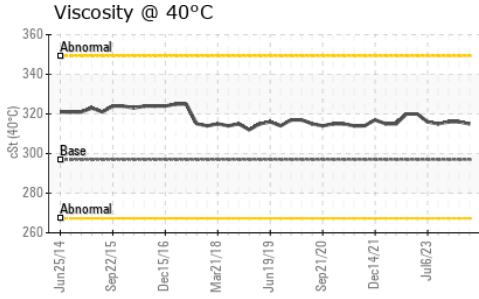
	method	limit/base	current	history1	history2	
Boron	ppm	ASTM D5185(m)		<b>15</b>	22	19
Barium	ppm	ASTM D5185(m)		<b>0</b>	0	0
Molybdenum	ppm	ASTM D5185(m)		<b>0</b>	0	0
Manganese	ppm	ASTM D5185(m)		<b>&lt;1</b>	0	0
Magnesium	ppm	ASTM D5185(m)		<b>0</b>	<1	<1
Calcium	ppm	ASTM D5185(m)		<b>2</b>	1	2
Phosphorus	ppm	ASTM D5185(m)		<b>289</b>	302	313
Zinc	ppm	ASTM D5185(m)		<b>2</b>	3	2
Sulfur	ppm	ASTM D5185(m)		<b>13818</b>	14229	14419
Lithium	ppm	ASTM D5185(m)		<b>&lt;1</b>	<1	<1

### CONTAMINANTS

	method	limit/base	current	history1	history2	
Silicon	ppm	ASTM D5185(m)	>50	<b>26</b>	25	24
Sodium	ppm	ASTM D5185(m)		<b>0</b>	<1	0
Potassium	ppm	ASTM D5185(m)	>20	<b>&lt;1</b>	<1	4



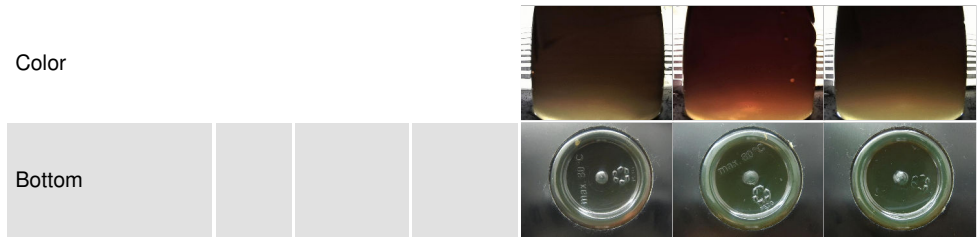
# OIL ANALYSIS REPORT



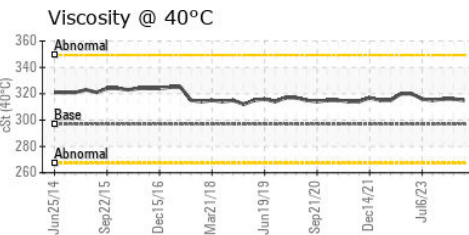
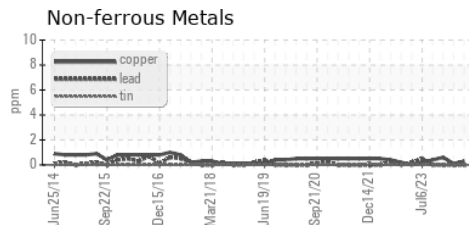
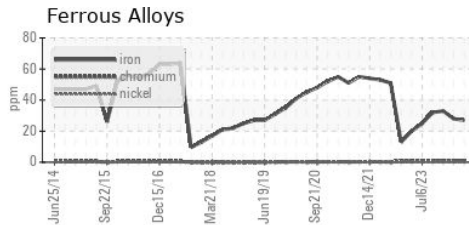
VISUAL	method	limit/base	current	history1	history2
White Metal	scalar	Visual*	NONE	VLITE	NONE
Yellow Metal	scalar	Visual*	NONE	NONE	NONE
Precipitate	scalar	Visual*	NONE	NONE	NONE
Silt	scalar	Visual*	NONE	VLITE	NONE
Debris	scalar	Visual*	NONE	VLITE	NONE
Sand/Dirt	scalar	Visual*	NONE	NONE	VLITE
Appearance	scalar	Visual*	NORML	NORML	NORML
Odor	scalar	Visual*	NORML	NORML	NORML
Emulsified Water	scalar	Visual*	>0.2	NEG	NEG
Free Water	scalar	Visual*		NEG	NEG

FLUID PROPERTIES	method	limit/base	current	history1	history2
Visc @ 40°C	cSt	ASTM D7279(m)	297	<b>315</b>	316

SAMPLE IMAGES	method	limit/base	current	history1	history2
---------------	--------	------------	---------	----------	----------



## GRAPHS



**Laboratory** : WearCheck - C8-1175 Appleby Line, Burlington, ON L7L 5H9  
**Sample No.** : WC0892269  
**Lab Number** : **02645020**  
**Unique Number** : 5802559  
**Test Package** : IND 1

**CANADIAN GENERAL TOWER LTD.**  
 52 MIDDLETON STREET, P.O. BOX 160  
 CAMBRIDGE, ON  
 CA N1S 2R4  
 Contact: Bob Abell  
 bob.abell@cgtower.com  
 T: (519)623-1630  
 F: (519)623-7018

To discuss this sample report, contact Customer Service at 1-800-268-2131.  
 Test denoted (\*) outside scope of accreditation, (m) method modified, (e) tested at external lab.  
 Validity of results and interpretation are based on the sample and information as supplied.