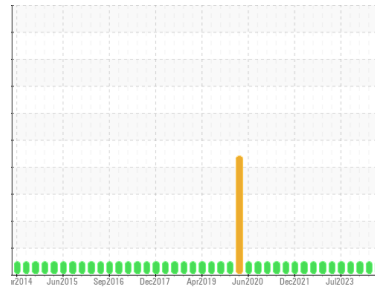




OIL ANALYSIS REPORT

Sample Rating Trend



NORMAL



Area
4 Calender Line
 Machine Id
38-0060 Banbury
 Component
Gearbox
 Fluid
SUNOCO SUNE32 (30 GAL)

DIAGNOSIS

Recommendation

Resample at the next service interval to monitor.

Wear

All component wear rates are normal.

Contamination

There is no indication of any contamination in the oil.

Fluid Condition

The condition of the oil is acceptable for the time in service.

SAMPLE INFORMATION

	method	limit/base	current	history1	history2
Sample Number	Client Info		WC0892268	WC0837290	WC0867517
Sample Date	Client Info		06 Jun 2024	20 Mar 2024	03 Jan 2024
Machine Age	hrs	Client Info	0	0	0
Oil Age	hrs	Client Info	0	0	0
Oil Changed	Client Info		N/A	N/A	N/A
Sample Status			NORMAL	NORMAL	NORMAL

CONTAMINATION

	method	limit/base	current	history1	history2
Water	WC Method	>0.2	NEG	NEG	NEG

WEAR METALS

	method	limit/base	current	history1	history2
Iron	ppm	ASTM D5185(m) >200	35	37	37
Chromium	ppm	ASTM D5185(m) >15	0	0	0
Nickel	ppm	ASTM D5185(m) >15	<1	<1	<1
Titanium	ppm	ASTM D5185(m)	<1	<1	0
Silver	ppm	ASTM D5185(m)	0	0	0
Aluminum	ppm	ASTM D5185(m) >25	<1	<1	<1
Lead	ppm	ASTM D5185(m) >100	<1	0	1
Copper	ppm	ASTM D5185(m) >200	<1	<1	<1
Tin	ppm	ASTM D5185(m) >25	0	0	0
Antimony	ppm	ASTM D5185(m) >5	<1	<1	<1
Vanadium	ppm	ASTM D5185(m)	0	0	0
Beryllium	ppm	ASTM D5185(m)	0	0	0
Cadmium	ppm	ASTM D5185(m)	0	0	0

ADDITIVES

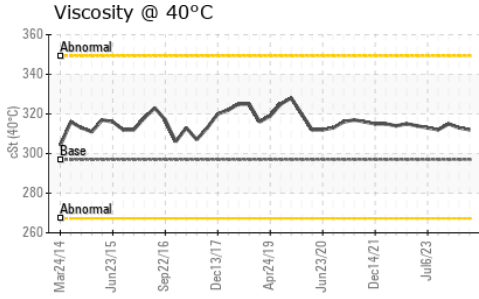
	method	limit/base	current	history1	history2
Boron	ppm	ASTM D5185(m)	11	12	11
Barium	ppm	ASTM D5185(m)	<1	<1	<1
Molybdenum	ppm	ASTM D5185(m)	1	<1	1
Manganese	ppm	ASTM D5185(m)	<1	0	0
Magnesium	ppm	ASTM D5185(m)	3	3	3
Calcium	ppm	ASTM D5185(m)	4	4	5
Phosphorus	ppm	ASTM D5185(m)	268	279	289
Zinc	ppm	ASTM D5185(m)	37	36	35
Sulfur	ppm	ASTM D5185(m)	16670	16913	17367
Lithium	ppm	ASTM D5185(m)	<1	<1	<1

CONTAMINANTS

	method	limit/base	current	history1	history2
Silicon	ppm	ASTM D5185(m) >50	1	<1	2
Sodium	ppm	ASTM D5185(m)	1	1	1
Potassium	ppm	ASTM D5185(m) >20	<1	<1	4



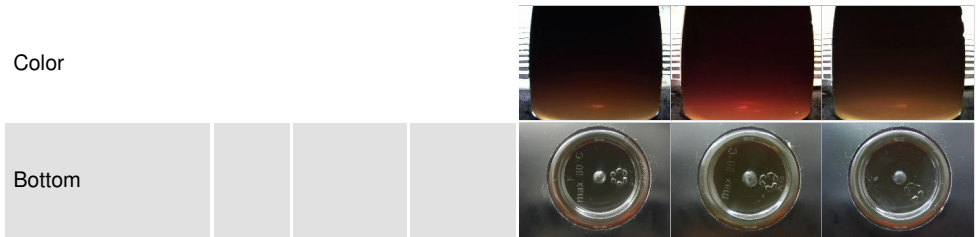
OIL ANALYSIS REPORT



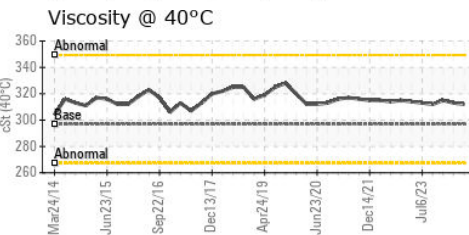
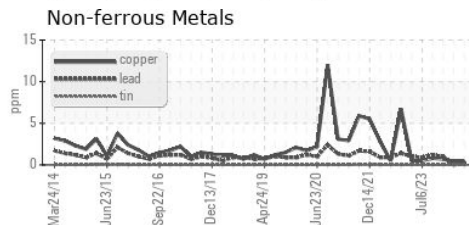
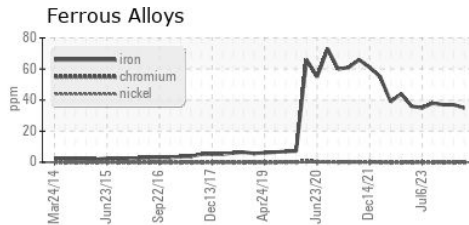
VISUAL	method	limit/base	current	history1	history2
White Metal	scalar	Visual*	NONE	VLITE	NONE
Yellow Metal	scalar	Visual*	NONE	NONE	NONE
Precipitate	scalar	Visual*	NONE	NONE	NONE
Silt	scalar	Visual*	NONE	NONE	NONE
Debris	scalar	Visual*	NONE	VLITE	NONE
Sand/Dirt	scalar	Visual*	NONE	NONE	VLITE
Appearance	scalar	Visual*	NORML	NORML	NORML
Odor	scalar	Visual*	NORML	NORML	NORML
Emulsified Water	scalar	Visual*	>0.2	NEG	NEG
Free Water	scalar	Visual*		NEG	NEG

FLUID PROPERTIES	method	limit/base	current	history1	history2
Visc @ 40°C	cSt	ASTM D7279(m)	297	312	313

SAMPLE IMAGES	method	limit/base	current	history1	history2
---------------	--------	------------	---------	----------	----------



GRAPHS



Laboratory : WearCheck - C8-1175 Appleby Line, Burlington, ON L7L 5H9
Sample No. : WC0892268
Lab Number : 02645034
Unique Number : 5802573
Test Package : IND 1

CANADIAN GENERAL TOWER LTD.
 52 MIDDLETON STREET, P.O. BOX 160
 CAMBRIDGE, ON
 CA N1S 2R4
 Contact: Bob Abell
 bob.abell@cgtower.com
 T: (519)623-1630
 F: (519)623-7018

To discuss this sample report, contact Customer Service at 1-800-268-2131.
 Test denoted (*) outside scope of accreditation, (m) method modified, (e) tested at external lab.
 Validity of results and interpretation are based on the sample and information as supplied.