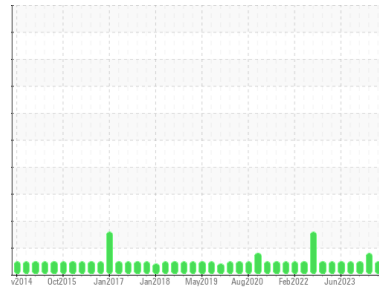




OIL ANALYSIS REPORT

Sample Rating Trend



NORMAL



Area

Press 5

Machine Id

SMS EVMVCO PRESS 5 HYDRAULIC SYSTEM (S/N 3200046)

Component

Hydraulic System

Fluid

ESSO NUTO H ISO 46 (12000 LTR)

DIAGNOSIS

Recommendation

Resample at the next service interval to monitor. Please contact your representative for information regarding the proper sampling kits for your service. NOTE: We recommend using Advanced Oil Monitoring (AOM) kits for this system. The AOM test package includes advanced level testing to determine the suitability of turbine and large industrial compressor oils for continued use.

Wear

All component wear rates are normal.

Contamination

The system cleanliness is acceptable for your target ISO 4406 cleanliness code. The system and fluid cleanliness is acceptable.

Fluid Condition

The AN level is acceptable for this fluid. The condition of the oil is acceptable for the time in service (unconfirmed).

SAMPLE INFORMATION

	method	limit/base	current	history1	history2
Sample Number	Client Info		WC0942062	WC0681836	WC0828660
Sample Date	Client Info		02 Jul 2024	20 Mar 2024	16 Jan 2024
Machine Age	days	Client Info	6	6	6
Oil Age	days	Client Info	6	6	6
Oil Changed	Client Info		N/A	N/A	N/A
Sample Status			NORMAL	ATTENTION	NORMAL

CONTAMINATION

	method	limit/base	current	history1	history2
Water	WC Method	>0.05	NEG	NEG	NEG

WEAR METALS

	method	limit/base	current	history1	history2
Iron	ppm	ASTM D5185(m) >40	2	3	2
Chromium	ppm	ASTM D5185(m) >4	0	0	0
Nickel	ppm	ASTM D5185(m) >20	<1	0	<1
Titanium	ppm	ASTM D5185(m)	0	0	0
Silver	ppm	ASTM D5185(m)	0	0	0
Aluminum	ppm	ASTM D5185(m) >4	0	0	<1
Lead	ppm	ASTM D5185(m) >10	<1	0	<1
Copper	ppm	ASTM D5185(m) >60	10	10	9
Tin	ppm	ASTM D5185(m) >4	0	0	0
Antimony	ppm	ASTM D5185(m)	0	0	0
Vanadium	ppm	ASTM D5185(m)	0	0	0
Beryllium	ppm	ASTM D5185(m)	0	0	0
Cadmium	ppm	ASTM D5185(m)	0	0	0

ADDITIVES

	method	limit/base	current	history1	history2
Boron	ppm	ASTM D5185(m) 0	2	0	1
Barium	ppm	ASTM D5185(m) 0	0	0	0
Molybdenum	ppm	ASTM D5185(m) 0	<1	0	<1
Manganese	ppm	ASTM D5185(m)	0	0	0
Magnesium	ppm	ASTM D5185(m) 5	7	7	7
Calcium	ppm	ASTM D5185(m) 50	84	82	79
Phosphorus	ppm	ASTM D5185(m) 330	327	326	324
Zinc	ppm	ASTM D5185(m) 410	408	408	393
Sulfur	ppm	ASTM D5185(m) 2700	785	773	805
Lithium	ppm	ASTM D5185(m)	<1	<1	<1

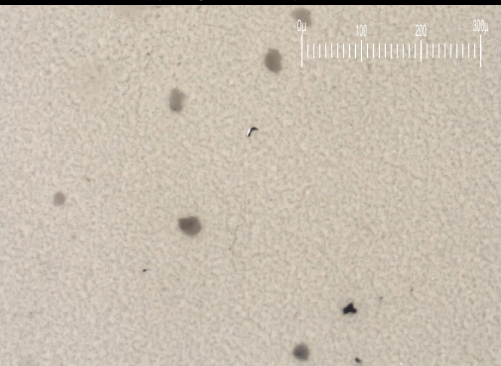
CONTAMINANTS

	method	limit/base	current	history1	history2
Silicon	ppm	ASTM D5185(m) >20	0	0	0
Sodium	ppm	ASTM D5185(m)	0	0	0
Potassium	ppm	ASTM D5185(m) >20	<1	0	1

FLUID CLEANLINESS

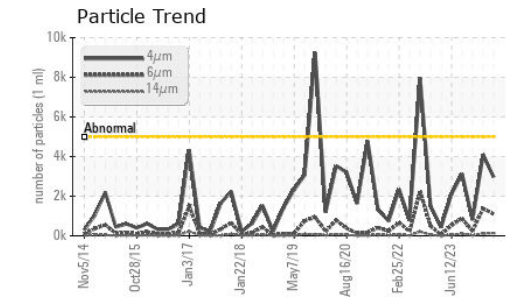
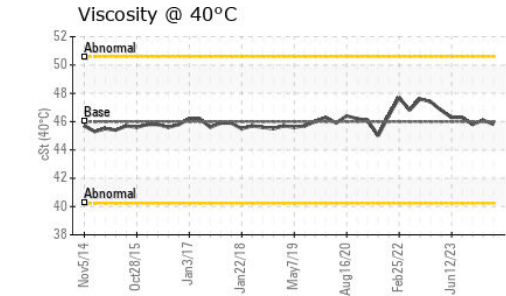
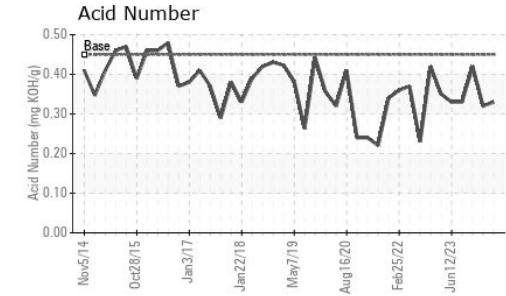
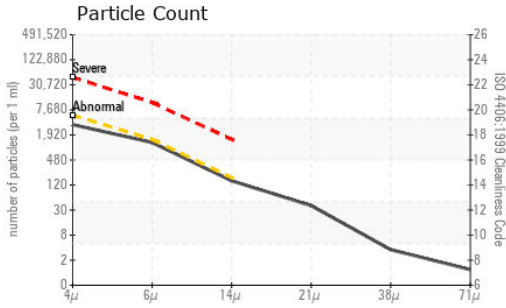
	method	limit/base	current	history1	history2
Particles >4µm	ASTM D7647	>5000	2968	4093	805
Particles >6µm	ASTM D7647	>1300	1104	1379	234
Particles >14µm	ASTM D7647	>160	134	111	25
Particles >21µm	ASTM D7647	>40	34	27	7
Particles >38µm	ASTM D7647	>10	3	2	1
Particles >71µm	ASTM D7647	>3	1	0	0
Oil Cleanliness	ISO 4406 (c)	>19/17/14	19/17/14	19/18/14	17/15/12

Particle Filter (Magn: 100 x)





OIL ANALYSIS REPORT



FLUID DEGRADATION	method	limit/base	current	history1	history2	
Acid Number (AN)	mg KOH/g	ASTM D974*	0.45	0.33	0.32	0.42

VISUAL	method	limit/base	current	history1	history2	
White Metal	scalar	Visual*	NONE	VLITE	NONE	NONE
Yellow Metal	scalar	Visual*	NONE	NONE	NONE	NONE
Precipitate	scalar	Visual*	NONE	NONE	NONE	NONE
Silt	scalar	Visual*	NONE	NONE	NONE	NONE
Debris	scalar	Visual*	NONE	NONE	NONE	NONE
Sand/Dirt	scalar	Visual*	NONE	NONE	NONE	NONE
Appearance	scalar	Visual*	NORML	NORML	NORML	NORML
Odor	scalar	Visual*	NORML	NORML	NORML	NORML
Emulsified Water	scalar	Visual*	>0.05	NEG	NEG	NEG
Free Water	scalar	Visual*		NEG	NEG	NEG

FLUID PROPERTIES	method	limit/base	current	history1	history2	
Visc @ 40°C	cSt	ASTM D7279(m)	46	45.8	46.1	45.8

SAMPLE IMAGES	method	limit/base	current	history1	history2
---------------	--------	------------	---------	----------	----------

Color			
Bottom			
PrtFilter		no image	no image



Laboratory : WearCheck - C8-1175 Appleby Line, Burlington, ON L7L 5H9
Sample No. : WC0942062
Lab Number : 02645444
Unique Number : 5802983
Test Package : IND 2 (Additional Tests: Bottom, BottomAnalysis, FilterPatch, PrtFilter)

CAN ART ALUMINUM EXTRUSION INC
 428 JUTRAS DRIVE SOUTH
 TECUMSEH, ON
 CA N8N 5C5
 Contact: Angelo Bertoia
 angelo@canart.com
 T: (519)727-4399
 F: (519)727-6434

To discuss this sample report, contact Customer Service at 1-800-268-2131.
 Test denoted (*) outside scope of accreditation, (m) method modified, (e) tested at external lab.
 Validity of results and interpretation are based on the sample and information as supplied.