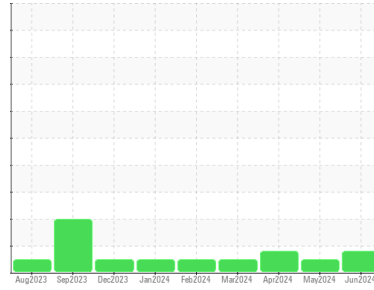




OIL ANALYSIS REPORT

Sample Rating Trend



Machine Id
EPIROC MT65 TRK219
 Component
Transmission (Manual)
 Fluid
MOBIL 15W40 (--- GAL)

DIAGNOSIS

- Recommendation**
We recommend that you drain the fluid from the component if this has not already been done. We recommend an early resample to monitor this condition.
- Wear**
Copper ppm levels are abnormal. Clutch disc wear or oil cooler leaching indicated.
- Contamination**
There is no indication of any contamination in the fluid.
- Fluid Condition**
The fluid is no longer serviceable as a result of the abnormal and/or severe wear.

SAMPLE INFORMATION

	method	limit/base	current	history1	history2
Sample Number	Client Info		WC0916298	WC0937728	WC0925839
Sample Date	Client Info		25 Jun 2024	23 May 2024	24 Apr 2024
Machine Age	hrs	Client Info	9224	8902	0
Oil Age	hrs	Client Info	0	0	0
Oil Changed	Client Info		Not Chngd	Changed	N/A
Sample Status			ABNORMAL	NORMAL	ABNORMAL

CONTAMINATION

	method	limit/base	current	history1	history2
Water	WC Method	>0.1	NEG	NEG	NEG

WEAR METALS

	method	limit/base	current	history1	history2	
Iron	ppm	ASTM D5185(m)	>200	4	4	4
Chromium	ppm	ASTM D5185(m)	>5	0	0	0
Nickel	ppm	ASTM D5185(m)	>5	0	0	0
Titanium	ppm	ASTM D5185(m)		0	0	0
Silver	ppm	ASTM D5185(m)	>7	<1	0	0
Aluminum	ppm	ASTM D5185(m)	>25	3	3	3
Lead	ppm	ASTM D5185(m)	>45	8	5	5
Copper	ppm	ASTM D5185(m)	>225	▲ 271	218	▲ 237
Tin	ppm	ASTM D5185(m)	>10	0	0	0
Antimony	ppm	ASTM D5185(m)		0	0	0
Vanadium	ppm	ASTM D5185(m)		0	0	0
Beryllium	ppm	ASTM D5185(m)		0	0	0
Cadmium	ppm	ASTM D5185(m)		0	0	0

ADDITIVES

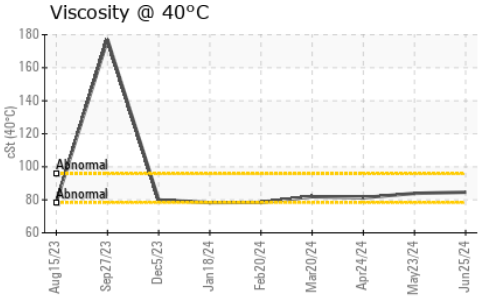
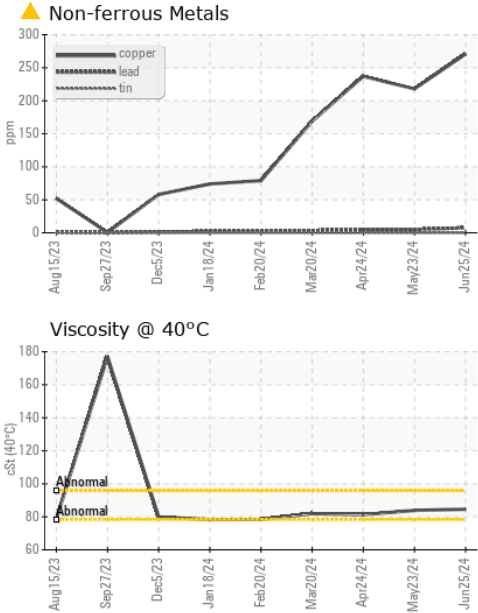
	method	limit/base	current	history1	history2	
Boron	ppm	ASTM D5185(m)		69	71	76
Barium	ppm	ASTM D5185(m)		0	0	0
Molybdenum	ppm	ASTM D5185(m)		36	36	36
Manganese	ppm	ASTM D5185(m)		<1	<1	<1
Magnesium	ppm	ASTM D5185(m)		465	467	474
Calcium	ppm	ASTM D5185(m)		1647	1637	1723
Phosphorus	ppm	ASTM D5185(m)		763	798	835
Zinc	ppm	ASTM D5185(m)		867	857	917
Sulfur	ppm	ASTM D5185(m)		2263	2402	2508
Lithium	ppm	ASTM D5185(m)		<1	<1	<1

CONTAMINANTS

	method	limit/base	current	history1	history2	
Silicon	ppm	ASTM D5185(m)	>125	6	6	5
Sodium	ppm	ASTM D5185(m)	>118	3	3	4
Potassium	ppm	ASTM D5185(m)	>20	<1	<1	<1



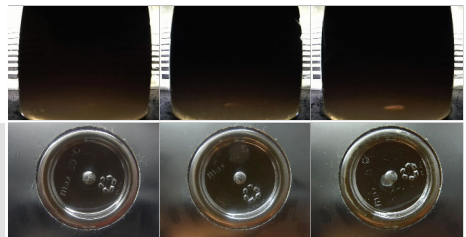
OIL ANALYSIS REPORT



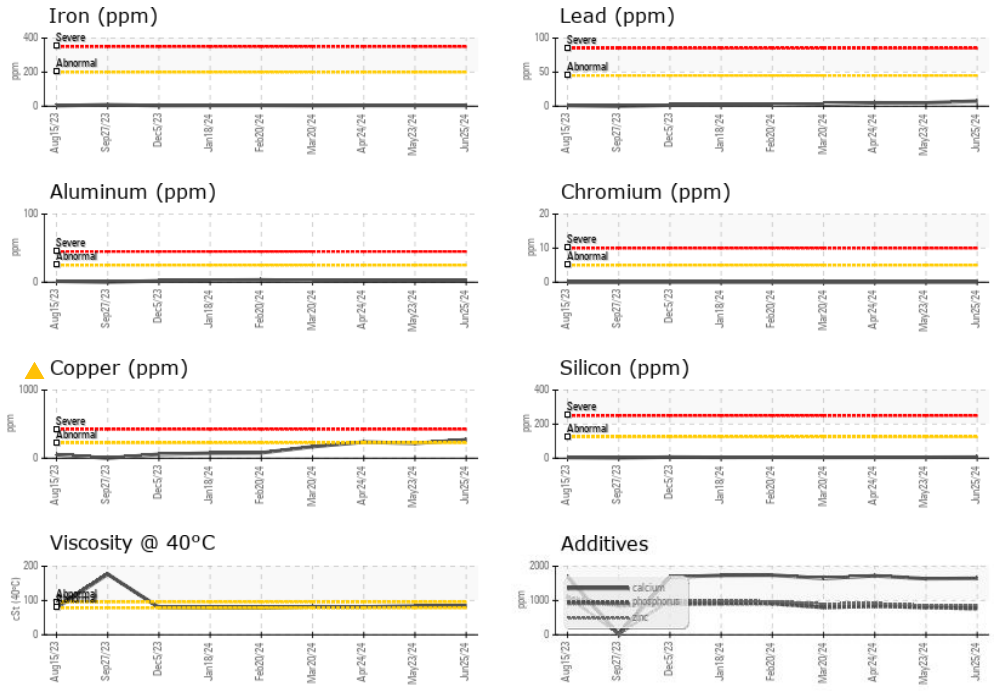
VISUAL	method	limit/base	current	history1	history2	
White Metal	scalar	Visual*	NONE	VLITE	NONE	VLITE
Yellow Metal	scalar	Visual*	NONE	NONE	NONE	NONE
Precipitate	scalar	Visual*	NONE	NONE	NONE	NONE
Silt	scalar	Visual*	NONE	NONE	NONE	NONE
Debris	scalar	Visual*	NONE	NONE	VLITE	NONE
Sand/Dirt	scalar	Visual*	NONE	VLITE	NONE	NONE
Appearance	scalar	Visual*	NORML	NORML	NORML	NORML
Odor	scalar	Visual*	NORML	NORML	NORML	NORML
Emulsified Water	scalar	Visual*	>0.1	NEG	NEG	NEG
Free Water	scalar	Visual*		NEG	NEG	NEG

FLUID PROPERTIES	method	limit/base	current	history1	history2
Visc @ 40°C	cSt	ASTM D7279(m)	84.6	83.9	81.3

SAMPLE IMAGES	method	limit/base	current	history1	history2
Color					
Bottom					



GRAPHS



Laboratory : WearCheck - C8-1175 Appleby Line, Burlington, ON L7L 5H9
Sample No. : WC0916298
Lab Number : 02645534
Unique Number : 5803073
Test Package : MOB 1

Agnico Eagle Canada
 1350 Government Rd. W, MACASSA COMPLEX
 Kirkland Lake, ON
 CA P2N 3J1

To discuss this sample report, contact Customer Service at 1-800-268-2131.
 Test denoted (*) outside scope of accreditation, (m) method modified, (e) tested at external lab.
 Validity of results and interpretation are based on the sample and information as supplied.

Contact: Mitch Lamontagne
 AEM_KL_macassaoilsamplesresults@agnicoeagle.com
 T: (705)567-5208
 F: (705)567-5221