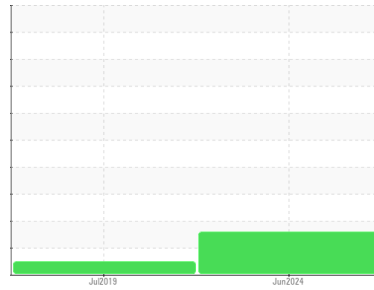




FUEL REPORT

Sample Rating Trend



ISO



Machine Id

TANK 4

Component

Tank Diesel Fuel

Fluid

No.2 DIESEL FUEL (ULTRALOW SULPHUR) (--- GAL)

DIAGNOSIS

Recommendation

Les tests de laboratoire indiquent que ce carburant peut être utilisé et qu'il répond à toutes les exigences. Nous vous recommandons de filtrer ce fluide avant de l'utiliser. Nous recommandons le remplacement des filtres de ce composant. Échantillonner de nouveau l'équipement au prochain intervalle de vidange afin d'en surveiller la condition.

Contaminants

Il y a une légère quantité de limon (particules de 4 à 14 microns) dans le carburant. La teneur en eau est négligeable.

Fuel Condition

Tous les essais en laboratoire indiquent que cet échantillon satisfait aux spécifications pour le carburant diesel à ultra-faible teneur de soufre No.2 (US EPA/CGSB-3.517-3 type B).

SAMPLE INFORMATION		method	limit/base	current	history1	history2
Sample Number	Client Info			CU0022978	CU0015374	---
Sample Date	Client Info			26 Jun 2024	02 Jul 2019	---
Machine Age	hrs	Client Info		0	0	---
Sample Status				ATTENTION	NORMAL	---

PHYSICAL PROPERTIES		method	limit/base	current	history1	history2
Specific Gravity		ASTM D1298*	0.839	0.822	0.823	---
Fuel Color	text	Visual Screen*	Yellow	Pink	Pink	---
Visc @ 40°C	cSt	ASTM D7279(m)	3.0	1.9	1.9	---
Pensky-Martens Flash Point	°C	ASTM D7215*	52	48.7	49	---

SULFUR CONTENT		method	limit/base	current	history1	history2
Sulfur	ppm	ASTM D5185(m)	10	6	5	---

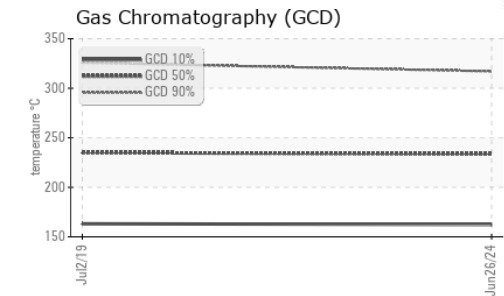
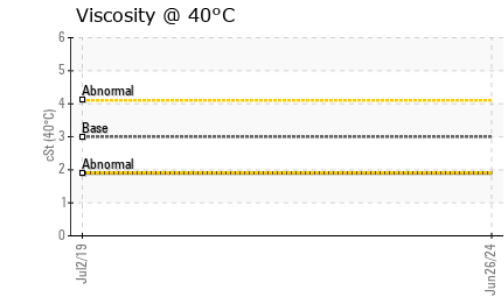
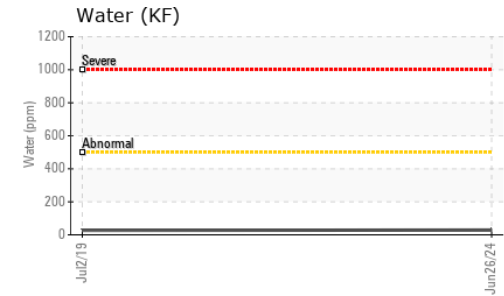
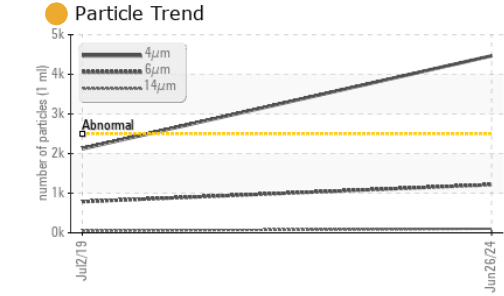
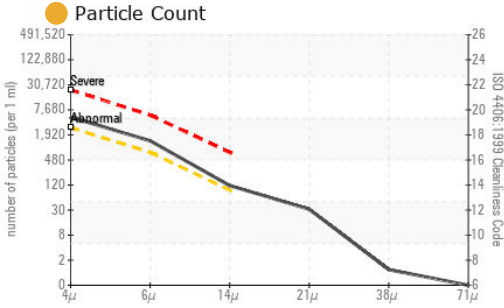
DISTILLATION		method	limit/base	current	history1	history2
Initial Boiling Point	°C	ASTM D2887*	165	156	148	---
5% Distillation Point	°C	ASTM D2887*		175	169	---
10% Distill Point	°C	ASTM D2887*	201	182	177	---
15% Distillation Point	°C	ASTM D2887*		189	184	---
20% Distill Point	°C	ASTM D2887*	216	195	191	---
30% Distill Point	°C	ASTM D2887*	230	207	204	---
40% Distill Point	°C	ASTM D2887*	243	220	218	---
50% Distill Point	°C	ASTM D2887*	255	232	233	---
60% Distill Point	°C	ASTM D2887*	267	245	247	---
70% Distill Point	°C	ASTM D2887*	280	258	263	---
80% Distill Point	°C	ASTM D2887*	295	275	281	---
85% Distillation Point	°C	ASTM D2887*		287	292	---
90% Distill Point	°C	ASTM D2887*	310	299	305	---
95% Distillation Point	°C	ASTM D2887*		319	324	---
Final Boiling Point	°C	ASTM D2887*	341	343	336	---
Distillation Residue	%	ASTM D86(e)*	3.0	---	1.4	---
Distillation Loss	%	ASTM D86(e)*	3.0	---	0.6	---

IGNITION QUALITY		method	limit/base	current	history1	history2
API Gravity		ASTM D1298*	37.7	40	40.4	---
Cetane Index		ASTM D4737*	<40.0	48	47.8	---

CONTAMINANTS		method	limit/base	current	history1	history2
Silicon	ppm	ASTM D5185(m)	<1.0	0	0	---
Sodium	ppm	ASTM D5185(m)	<0.1	0	<1	---
Potassium	ppm	ASTM D5185(m)	<0.1	0	0	---
Water	%	ASTM D6304*	<0.05	0.003	0.002	---
ppm Water	ppm	ASTM D6304*	<500	29	27.0	---



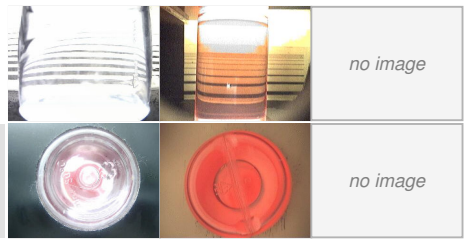
FUEL REPORT



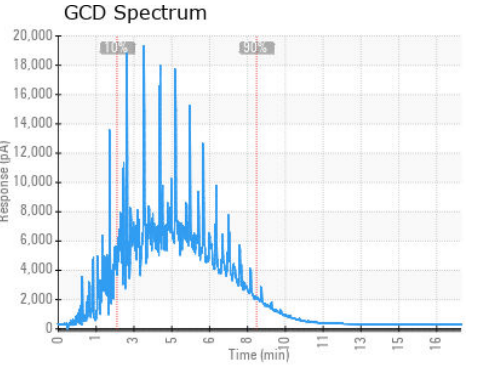
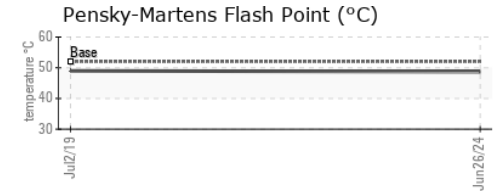
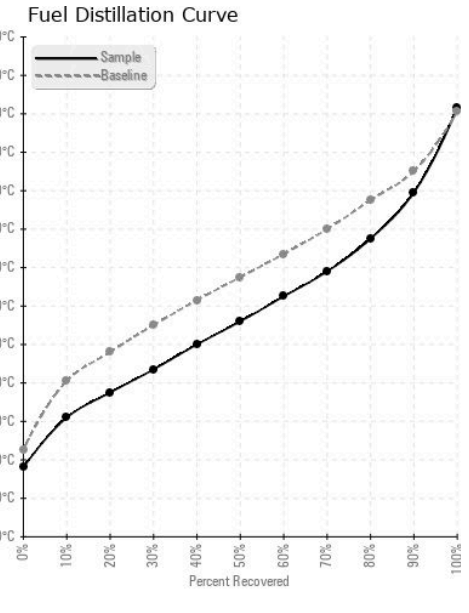
FLUID CLEANLINESS	method	limit/base	current	history1	history2
Particles >4µm	ASTM D7647	>2500	● 4467	2121	---
Particles >6µm	ASTM D7647	>640	● 1215	786	---
Particles >14µm	ASTM D7647	>80	● 103	50	---
Particles >21µm	ASTM D7647	>20	28	10	---
Particles >38µm	ASTM D7647	>4	1	0	---
Particles >71µm	ASTM D7647	>3	0	0	---
Oil Cleanliness	ISO 4406 (c)	>18/16/13	● 19/17/14	18/17/13	---

HEAVY METALS	method	limit/base	current	history1	history2	
Aluminum	ppm	ASTM D5185(m)	<0.1	0	0	---
Nickel	ppm	ASTM D5185(m)	<0.1	0	0	---
Lead	ppm	ASTM D5185(m)	<0.1	0	0	---
Vanadium	ppm	ASTM D5185(m)	<0.1	0	0	---
Iron	ppm	ASTM D5185(m)	<0.1	0	0	---
Calcium	ppm	ASTM D5185(m)	<0.1	0	0	---
Magnesium	ppm	ASTM D5185(m)	<0.1	0	0	---
Phosphorus	ppm	ASTM D5185(m)	<0.1	<1	0	---
Zinc	ppm	ASTM D5185(m)	<0.1	0	0	---

SAMPLE IMAGES	method	limit/base	current	history1	history2
Color					
Bottom					



GRAPHS



Laboratory : WearCheck - C8-1175 Appleby Line, Burlington, ON L7L 5H9
Sample No. : CU0022978
Lab Number : 02645994
Unique Number : 5811546
Test Package : FUEL (Additional Tests: CC Flash, PrtCount)
Received : 05 Jul 2024
Tested : 08 Jul 2024
Diagnosed : 08 Jul 2024 - Kevin Marson

CUMMINS EASTERN CANADA LP
 315 AV LIBERTE
 CANDIAC, QC
 CA J5R 6Z7
 Contact: Thomas Owens
 is275@cummins.com
 T: (450)638-6863
 F: (450)638-1202

To discuss this sample report, contact Customer Service at 1-800-268-2131.
 Test denoted (*) outside scope of accreditation, (m) method modified, (e) tested at external lab.
 Validity of results and interpretation are based on the sample and information as supplied.