



FUEL REPORT

Sample Rating Trend



NORMAL



Area
ESTRUXTURE [334017]

Machine Id
TANK 3

Component
Tank Diesel Fuel

Fluid
No.1 DIESEL FUEL (ULTRALOW SULPHUR) (--- GAL)

DIAGNOSIS

Recommendation

Les tests de laboratoire indiquent que ce carburant peut être utilisé et qu'il répond à toutes les exigences. Échantillonner de nouveau l'équipement au prochain intervalle de vidange afin d'en surveiller la condition.

Contaminants

La propreté du système est acceptable pour votre objectif de propreté ISO 4406. La teneur en eau est négligeable. Il n'y a aucun indice de contamination dans le carburant diesel.

Fuel Condition

Tous les essais en laboratoire indiquent que cet échantillon satisfait aux spécifications pour le carburant diesel à ultra-faible teneur de soufre No.1 (US EPA/CGSB-3.517-3 type A).

SAMPLE INFORMATION		method	limit/base	current	history1	history2
Sample Number	Client Info			CU0022977	---	---
Sample Date	Client Info			20 Jun 2024	---	---
Machine Age	hrs	Client Info		0	---	---
Sample Status				NORMAL	---	---

PHYSICAL PROPERTIES		method	limit/base	current	history1	history2
Specific Gravity		ASTM D1298*	0.825	0.810	---	---
Fuel Color	text	Visual Screen*	Clear	Pink	---	---
Visc @ 40°C	cSt	ASTM D7279(m)	1.8	1.6	---	---
Pensky-Martens Flash Point	°C	ASTM D7215*	38	48	---	---

SULFUR CONTENT		method	limit/base	current	history1	history2
Sulfur	ppm	ASTM D5185(m)	10	7	---	---

DISTILLATION		method	limit/base	current	history1	history2
Initial Boiling Point	°C	ASTM D2887*	159	153	---	---
5% Distillation Point	°C	ASTM D2887*		170	---	---
10% Distill Point	°C	ASTM D2887*	184	176	---	---
15% Distillation Point	°C	ASTM D2887*		182	---	---
20% Distill Point	°C	ASTM D2887*	196	187	---	---
30% Distill Point	°C	ASTM D2887*	205	197	---	---
40% Distill Point	°C	ASTM D2887*	216	208	---	---
50% Distill Point	°C	ASTM D2887*	227	219	---	---
60% Distill Point	°C	ASTM D2887*	238	231	---	---
70% Distill Point	°C	ASTM D2887*	251	242	---	---
80% Distill Point	°C	ASTM D2887*	264	259	---	---
85% Distillation Point	°C	ASTM D2887*		271	---	---
90% Distill Point	°C	ASTM D2887*	288	283	---	---
95% Distillation Point	°C	ASTM D2887*		303	---	---
Final Boiling Point	°C	ASTM D2887*	309	340	---	---

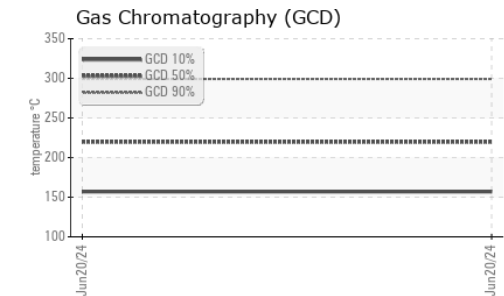
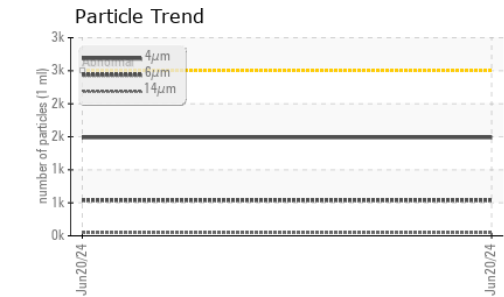
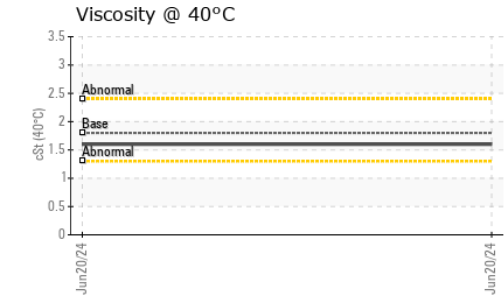
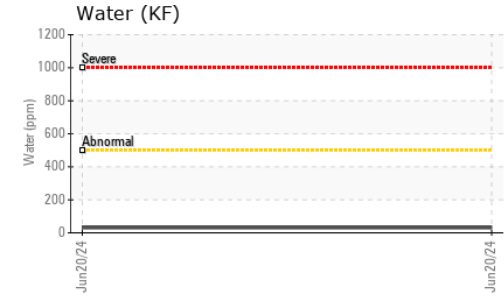
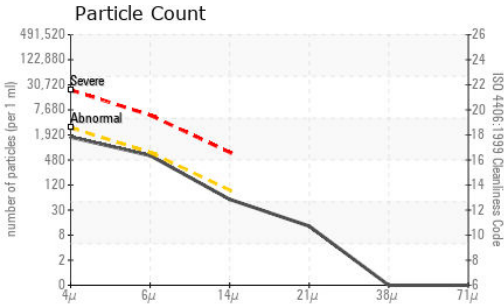
IGNITION QUALITY		method	limit/base	current	history1	history2
API Gravity		ASTM D1298*	40.1	43	---	---
Cetane Index		ASTM D4737*	<40.0	48	---	---

CONTAMINANTS		method	limit/base	current	history1	history2
Silicon	ppm	ASTM D5185(m)	<1.0	0	---	---
Sodium	ppm	ASTM D5185(m)	<0.1	<1	---	---
Potassium	ppm	ASTM D5185(m)	<0.1	0	---	---
Water	%	ASTM D6304*	<0.05	0.003	---	---
ppm Water	ppm	ASTM D6304*	<500	31	---	---

FLUID CLEANLINESS		method	limit/base	current	history1	history2
Particles >4µm		ASTM D7647	>2500	1489	---	---
Particles >6µm		ASTM D7647	>640	538	---	---
Particles >14µm		ASTM D7647	>80	48	---	---
Particles >21µm		ASTM D7647	>20	11	---	---
Particles >38µm		ASTM D7647	>4	0	---	---
Particles >71µm		ASTM D7647	>3	0	---	---
Oil Cleanliness		ISO 4406 (c)	>18/16/13	18/16/13	---	---



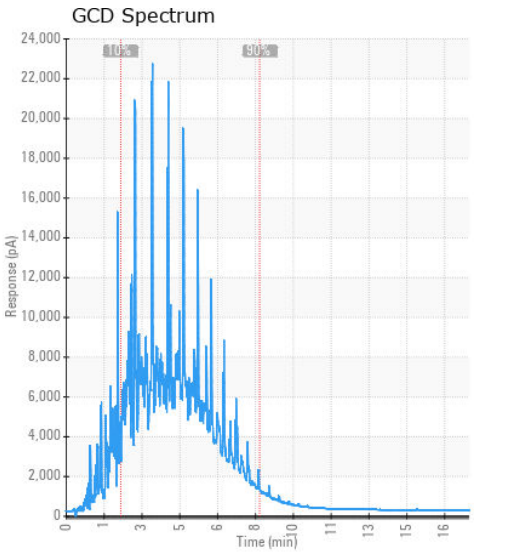
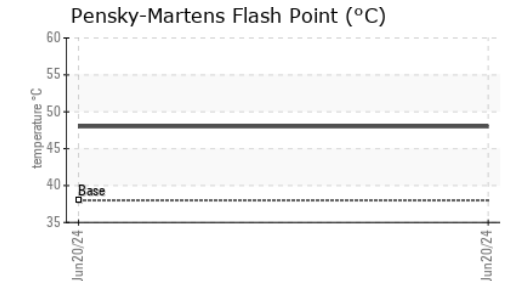
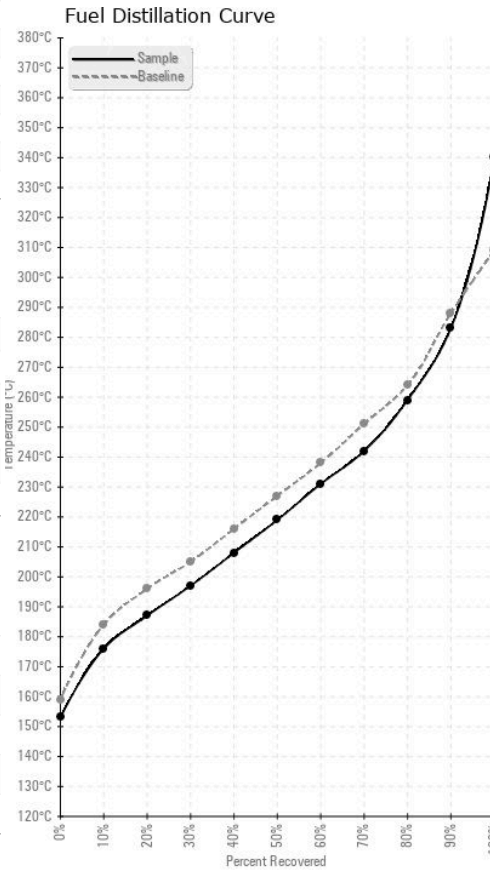
FUEL REPORT



HEAVY METALS	method	limit/base	current	history1	history2
Aluminum	ppm	ASTM D5185(m)	<0.1	0	---
Nickel	ppm	ASTM D5185(m)	<0.1	0	---
Lead	ppm	ASTM D5185(m)	<0.1	0	---
Vanadium	ppm	ASTM D5185(m)	<0.1	0	---
Iron	ppm	ASTM D5185(m)	<0.1	0	---
Calcium	ppm	ASTM D5185(m)	<0.1	0	---
Magnesium	ppm	ASTM D5185(m)	<0.1	0	---
Phosphorus	ppm	ASTM D5185(m)	<0.1	<1	---
Zinc	ppm	ASTM D5185(m)	<0.1	0	---

SAMPLE IMAGES	method	limit/base	current	history1	history2
Color				no image	no image
Bottom				no image	no image

GRAPHS



Laboratory : WearCheck - C8-1175 Appleby Line, Burlington, ON L7L 5H9
Sample No. : CU0022977 **Received** : 05 Jul 2024
Lab Number : 02645999 **Tested** : 11 Jul 2024
Unique Number : 5811551 **Diagnosed** : 11 Jul 2024 - Kevin Marson
Test Package : FUEL (Additional Tests: CC Flash, PRTCOUNT)

CUMMINS EASTERN CANADA LP
 315 AV LIBERTE
 CANDIAC, QC
 CA J5R 6Z7
 Contact: Thomas Owens
 is275@cummins.com
 T: (450)638-6863
 F: (450)638-1202

To discuss this sample report, contact Customer Service at 1-800-268-2131.
 Test denoted (*) outside scope of accreditation, (m) method modified, (e) tested at external lab.
 Validity of results and interpretation are based on the sample and information as supplied.