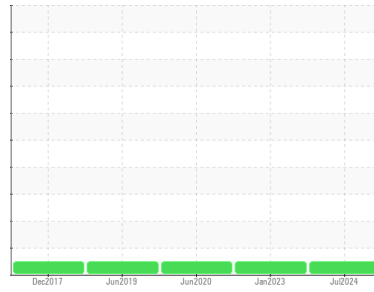




OIL ANALYSIS REPORT

Sample Rating Trend



NORMAL



Area
(C-GSKM)
 Machine Id
BEECHCRAFT GG-32014
 Component
Left Jet Turbine
 Fluid
EASTMAN TURBO OIL 2380 (13 QTS)

DIAGNOSIS

Recommendation

Resample at the next service interval to monitor.

Wear

The Direct-Reading Ferrographic data (DL, DS, %large) is normal. The filter contained no appreciable wear particles. All filter wear levels are normal.

Contamination

The water content is negligible. The filter contained only normal levels of contaminants, and debris. All filter contaminant levels are normal.

Fluid Condition

The AN level is acceptable for this fluid. The condition of the oil is suitable for further service.

SAMPLE INFORMATION		method	limit/base	current	history1	history2
Sample Number	Client Info			WC0766988	WC0643568	WC0332756
Sample Date	Client Info			02 Jul 2024	04 Jan 2023	17 Jun 2020
TSN	hrs	Client Info		40411	0	0
TSO	hrs	Client Info		40411	0	0
Oil Age	hrs	Client Info		0	0	0
Oil Changed		Client Info		N/A	N/A	Changed
Sample Status				NORMAL	NORMAL	NORMAL

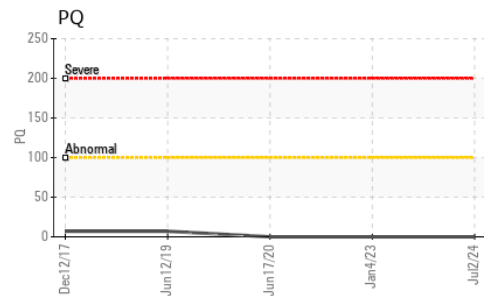
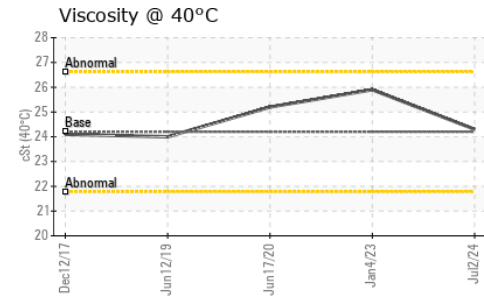
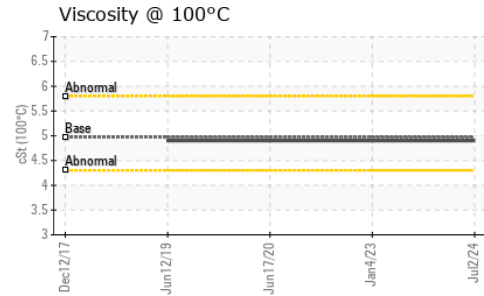
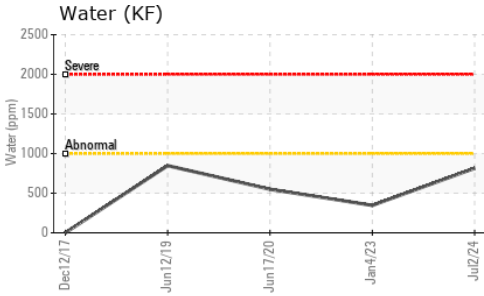
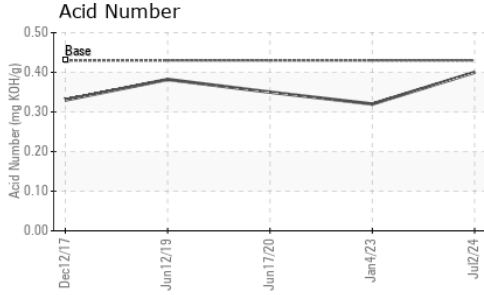
WEAR METALS		method	limit/base	current	history1	history2
PQ		ASTM D8184*		0	0	0
Iron	ppm	ASTM D5185(m)	>8	0	0	0
Chromium	ppm	ASTM D5185(m)	>2	0	0	<1
Nickel	ppm	ASTM D5185(m)	>2	<1	<1	0
Titanium	ppm	ASTM D5185(m)	>2	0	0	0
Silver	ppm	ASTM D5185(m)	>2	0	0	0
Aluminum	ppm	ASTM D5185(m)	>2	<1	<1	<1
Lead	ppm	ASTM D5185(m)	>3	0	0	0
Copper	ppm	ASTM D5185(m)	>3	0	0	0
Tin	ppm	ASTM D5185(m)	>2	0	0	0
Antimony	ppm	ASTM D5185(m)		0	0	<1
Vanadium	ppm	ASTM D5185(m)		0	0	0
Beryllium	ppm	ASTM D5185(m)		0	0	0
Cadmium	ppm	ASTM D5185(m)		0	0	0

DR-FERROGRAPHY		method	limit/base	current	history1	history2
Large Particles		DR-Ferr*		4.1	4.9	4.0
Small Particles		DR-Ferr*		4.2	4.2	5.2
Total Particles		DR-Ferr*	>---	8.3	9.1	9.2
Large Particles Percentage	%	DR-Ferr*		0	7.7	-13
Severity Index		DR-Ferr*		0	3	-4.8

FERROGRAPHY		method	limit/base	current	history1	history2
Ferrous Rubbing	Scale 0-10	ASTM D7684*		2	1	1
Ferrous Sliding	Scale 0-10	ASTM D7684*				
Ferrous Cutting	Scale 0-10	ASTM D7684*				
Ferrous Rolling	Scale 0-10	ASTM D7684*				
Ferrous Break-in	Scale 0-10	ASTM D7684*				
Ferrous Spheres	Scale 0-10	ASTM D7684*				
Ferrous Black Oxides	Scale 0-10	ASTM D7684*				
Ferrous Red Oxides	Scale 0-10	ASTM D7684*				
Ferrous Corrosive	Scale 0-10	ASTM D7684*				
Ferrous Other	Scale 0-10	ASTM D7684*				
Nonferrous Rubbing	Scale 0-10	ASTM D7684*		2		
Nonferrous Sliding	Scale 0-10	ASTM D7684*				
Nonferrous Cutting	Scale 0-10	ASTM D7684*				
Nonferrous Rolling	Scale 0-10	ASTM D7684*		2		
Nonferrous Other	Scale 0-10	ASTM D7684*				
Sand/Dirt	Scale 0-10	ASTM D7684*		2		
Fibres	Scale 0-10	ASTM D7684*		2		
Spheres	Scale 0-10	ASTM D7684*				
Other	Scale 0-10	ASTM D7684*			1	1
Patch Weight	mg	ASTM D7684*		47	---	---



OIL ANALYSIS REPORT



ADDITIVES	method	limit/base	current	history1	history2
Boron	ppm	ASTM D5185(m)	0	<1	<1
Barium	ppm	ASTM D5185(m)	0	0	0
Molybdenum	ppm	ASTM D5185(m)	0	0	0
Manganese	ppm	ASTM D5185(m)	0	0	0
Magnesium	ppm	ASTM D5185(m)	0	<1	<1
Calcium	ppm	ASTM D5185(m)	0	0	<1
Phosphorus	ppm	ASTM D5185(m)	2500	2665	2732
Zinc	ppm	ASTM D5185(m)	0	<1	<1
Sulfur	ppm	ASTM D5185(m)	0	10	2
Lithium	ppm	ASTM D5185(m)	0	<1	<1

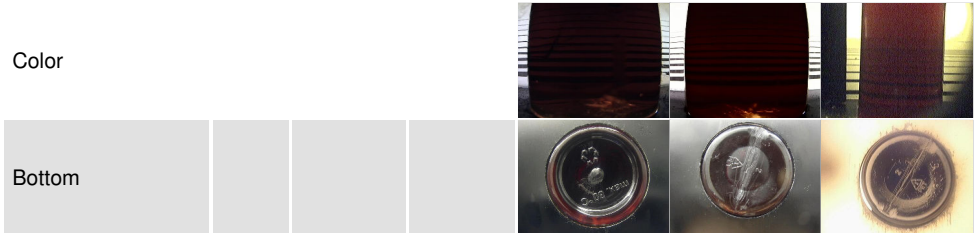
CONTAMINANTS	method	limit/base	current	history1	history2
Silicon	ppm	ASTM D5185(m)	>8	0	0
Sodium	ppm	ASTM D5185(m)		0	<1
Potassium	ppm	ASTM D5185(m)	>20	<1	<1
Water	%	ASTM D6304*	>0.1	0.081	0.034
ppm Water	ppm	ASTM D6304*	>1000	815	346.4

FLUID DEGRADATION	method	limit/base	current	history1	history2
Acid Number (AN)	mg KOH/g	ASTM D974*	0.43	0.40	0.32

VISUAL	method	limit/base	current	history1	history2
White Metal	scalar	Visual*	NONE	NONE	NONE
Yellow Metal	scalar	Visual*	NONE	NONE	NONE
Precipitate	scalar	Visual*	NONE	NONE	NONE
Silt	scalar	Visual*	NONE	NONE	NONE
Debris	scalar	Visual*	NONE	NONE	NONE
Sand/Dirt	scalar	Visual*	NONE	NONE	NONE
Appearance	scalar	Visual*	NORML	NORML	NORML
Odor	scalar	Visual*	NORML	NORML	NORML
Emulsified Water	scalar	Visual*	>0.1	NEG	NEG
Free Water	scalar	Visual*		NEG	NEG

FLUID PROPERTIES	method	limit/base	current	history1	history2
Visc @ 40°C	cSt	ASTM D7279(m)	24.2	24.3	25.9
Visc @ 100°C	cSt	ASTM D7279(m)	4.97	4.9	4.9
Viscosity Index (VI)	Scale	ASTM D2270*	134	127	112

SAMPLE IMAGES	method	limit/base	current	history1	history2
---------------	--------	------------	---------	----------	----------



Laboratory : WearCheck - C8-1175 Appleby Line, Burlington, ON L7L 5H9
Sample No. : WC0766988
Lab Number : 02646208
Unique Number : 5811760
Test Package : AVI 2 (Additional Tests: DR-FERR, PQ)

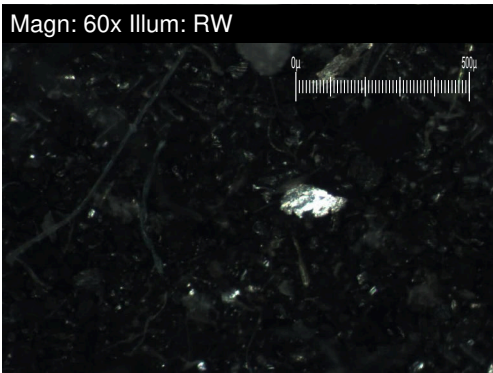
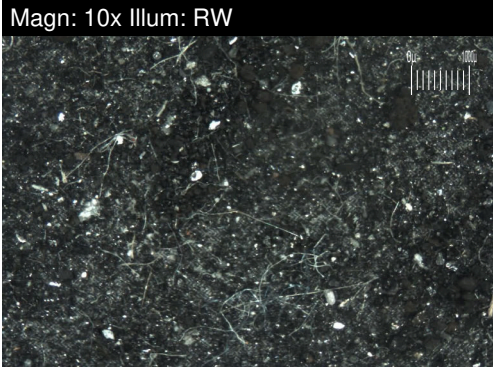
SKYLINK EXPRESS
 9300 AIRPORT ROAD, HANGAR #4
 MOUNT HOPE, ON
 CA L0R 1W0
 Contact: Marc Levesque
 mlevesque@skylinkexpress.com
 T: (905)973-2789
 F: (905)679-4242

To discuss this sample report, contact Customer Service at 1-800-268-2131.
 Test denoted (*) outside scope of accreditation, (m) method modified, (e) tested at external lab.
 Validity of results and interpretation are based on the sample and information as supplied.



FILTER REPORT

Area
(C-GSKM)
 Machine Id
BEECHCRAFT GG-32014
 Component
Left Jet Turbine
 Fluid
EASTMAN TURBO OIL 2380 (13 QTS)



DR-FERROGRAPHY		method	limit/base	current	history1	history2
Large Particles		DR-Ferr*		4.1	4.9	4.0
Small Particles		DR-Ferr*		4.2	4.2	5.2
Total Particles		DR-Ferr*	>---	8.3	9.1	9.2
Large Particles Percentage	%	DR-Ferr*		0	7.7	-13
Severity Index		DR-Ferr*		0	3	-4.8

FERROGRAPHY		method	limit/base	current	history1	history2
Ferrous Rubbing	Scale 0-10	ASTM D7684*		2	1	1
Ferrous Sliding	Scale 0-10	ASTM D7684*				
Ferrous Cutting	Scale 0-10	ASTM D7684*				
Ferrous Rolling	Scale 0-10	ASTM D7684*				
Ferrous Break-in	Scale 0-10	ASTM D7684*				
Ferrous Spheres	Scale 0-10	ASTM D7684*				
Ferrous Black Oxides	Scale 0-10	ASTM D7684*				
Ferrous Red Oxides	Scale 0-10	ASTM D7684*				
Ferrous Corrosive	Scale 0-10	ASTM D7684*				
Ferrous Other	Scale 0-10	ASTM D7684*				
Nonferrous Rubbing	Scale 0-10	ASTM D7684*		2		
Nonferrous Sliding	Scale 0-10	ASTM D7684*				
Nonferrous Cutting	Scale 0-10	ASTM D7684*				
Nonferrous Rolling	Scale 0-10	ASTM D7684*		2		
Nonferrous Other	Scale 0-10	ASTM D7684*				
Sand/Dirt	Scale 0-10	ASTM D7684*		2		
Fibres	Scale 0-10	ASTM D7684*		2		
Spheres	Scale 0-10	ASTM D7684*				
Other	Scale 0-10	ASTM D7684*			1	1
Patch Weight	mg	ASTM D7684*		47	---	---

WEAR

The Direct-Reading Ferrographic data (DL, DS, %large) is normal. The filter contained no appreciable wear particles. All filter wear levels are normal.

This page left intentionally blank