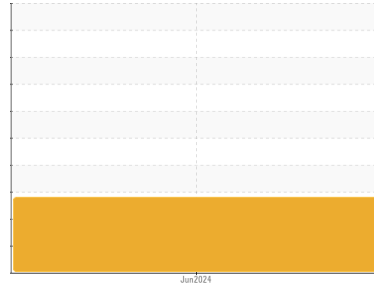




GREASE ANALYSIS

Sample Rating Trend



WEAR PARTICLES



Area

BUILDING 51 - CEREAL PRODUCTS

Machine Id

CENTRIFUGE B GEAR BOX (S/N 51CNTB-GB)

Component

Grease

Fluid

SKF LGHP 2 (--- GAL)

DIAGNOSIS

Recommendation

We recommend an early resample to monitor this condition. No other corrective action is recommended at this time. Diagnostician's Note: The grease quality is close to new, however, there are a few concerning wear particles present in the ferrogram (large sliding wear and small cutting wear particle). Recommend a resample in 3 months to monitor.

Wear

Wear particle analysis indicates that the ferrous cutting and ferrous sliding particles are marginal. All other component wear rates are normal.

Grease Condition

The condition of the grease is acceptable for the time in service.

Contaminants

There is no indication of any contamination in the grease.

SAMPLE INFORMATION

method	limit/base	current	history1	history2
Sample Number	Client Info	WC0848183	---	---
Sample Date	Client Info	29 Jun 2024	---	---
Machine Age	hrs Client Info	0	---	---
Grease Age	hrs Client Info	0	---	---
Grease Serviced	Client Info	N/A	---	---
Sample Status		MARGINAL	---	---

WEAR METALS

method	limit/base	current	history1	history2
PQ	ASTM D8184*	>200	0	---
Iron	ppm ASTM D5185(m)	>250	1	---
Chromium	ppm ASTM D5185(m)	>10	0	---
Nickel	ppm ASTM D5185(m)	>5	<1	---
Cadmium	ppm ASTM D5185(m)		0	---
Titanium	ppm ASTM D5185(m)		0	---
Vanadium	ppm ASTM D5185(m)		0	---
Lead	ppm ASTM D5185(m)	>25	<1	---
Copper	ppm ASTM D5185(m)	>75	2	---
Tin	ppm ASTM D5185(m)	>5	0	---
Silver	ppm ASTM D5185(m)	>5	0	---

ADDITIVES

method	limit/base	current	history1	history2
Boron	ppm ASTM D5185(m)	0	2	---
Magnesium	ppm ASTM D5185(m)	0	<1	---
Manganese	ppm ASTM D5185(m)	0	0	---
Molybdenum	ppm ASTM D5185(m)	0	0	---
Phosphorus	ppm ASTM D5185(m)	0	<1	---
Zinc	ppm ASTM D5185(m)	40	39	---
Antimony	ppm ASTM D5185(m)	0	0	---

THICKENER/SOAP

method	limit/base	current	history1	history2
Aluminum	ppm ASTM D5185(m)	0	<1	---
Barium	ppm ASTM D5185(m)	80	88	---
Calcium	ppm ASTM D5185(m)	0	25	---
Sodium	ppm ASTM D5185(m)	2	7	---
Lithium	ppm ASTM D5185(m)	0	<1	---
Sulfur	ppm ASTM D5185(m)	165	105	---

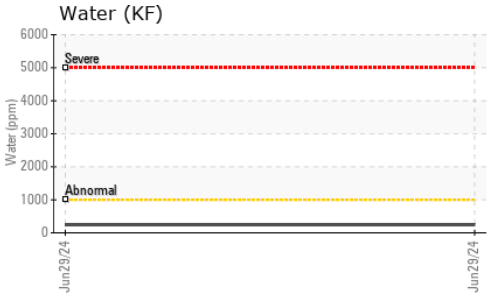
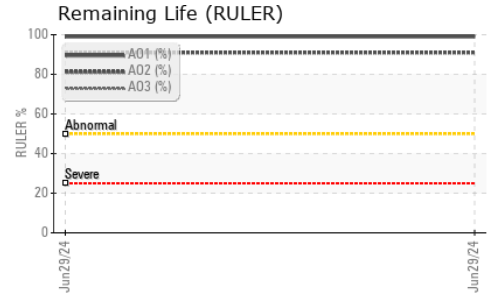
CONTAMINANTS

method	limit/base	current	history1	history2
Silicon	ppm ASTM D5185(m)	>150	0	---
Potassium	ppm ASTM D5185(m)		0	---
Water	% ASTM D6304*	>0.1	0.024	---
ppm Water	ppm ASTM D6304*	>1000	247	---

GREASE CONDITION

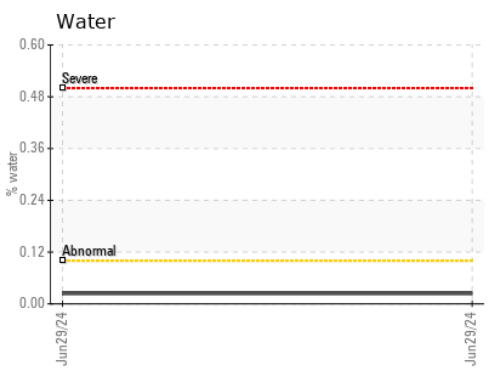
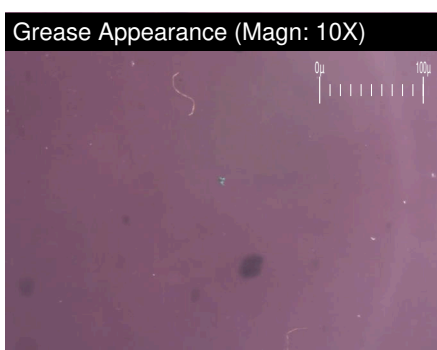
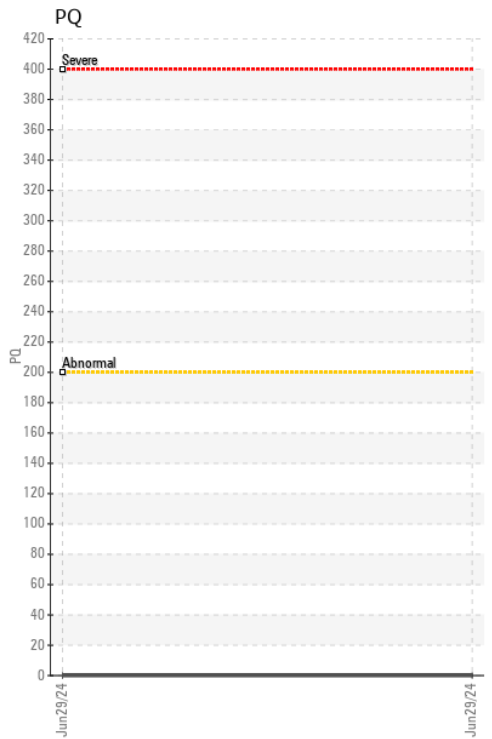
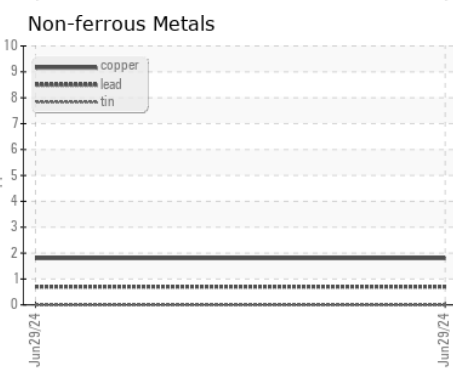
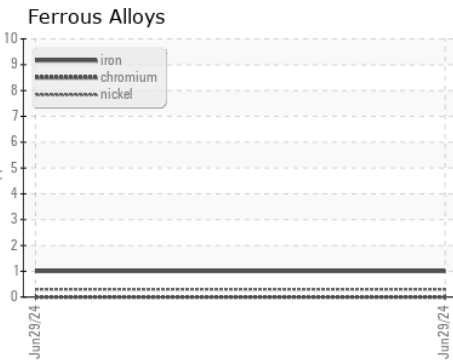
method	limit/base	current	history1	history2
Grease Color	Visual*	Blue	Purple	---
Texture	In-house*		Buttery	---
NLGI Consistency	NLGI Scale SKF Method*	2.5	3	---
Oil Separation (Bleed)	% SKF Method*	>+/-25%	23	---
Anti-Oxidant 1	% ASTM D6971*	<25%	99	---
Anti-Oxidant 2	% ASTM D6971*	<25%	91	---

GREASE ANALYSIS



SAMPLE IMAGES	method	limit/base	current	history1	history2
Color				no image	no image
Bottom				no image	no image
PrtFilter				no image	no image

GRAPHS



Laboratory : WearCheck - C8-1175 Appleby Line, Burlington, ON L7L 5H9
Sample No. : WC0848183 **Received** : 08 Jul 2024
Lab Number : **02646501** **Tested** : 16 Jul 2024
Unique Number : 5812053 **Diagnosed** : 16 Jul 2024 - Bill Quesnel
Test Package : GRS 3 (Additional Tests: BottomAnalysis)

HIRAM WALKER & SONS LTD.
 2072 RIVERSIDE DRIVE EAST, BOX 2518
 WINDSOR, ON
 CA N8Y 4S5
 Contact: Matt Morand
 matt.morand@pernod-ricard.com
 T: (519)561-5359
 F: (519)971-5719

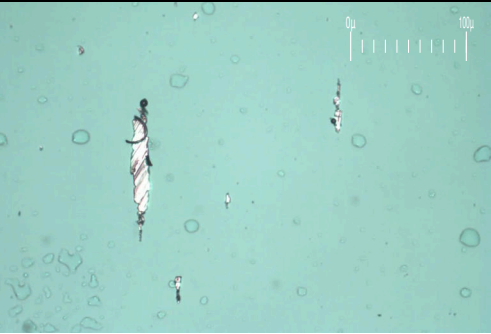
To discuss this sample report, contact Customer Service at 1-800-268-2131.
 Test denoted (*) outside scope of accreditation, (m) method modified, (e) tested at external lab.
 Validity of results and interpretation are based on the sample and information as supplied.



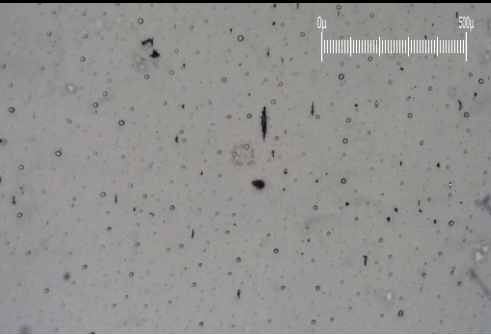
FERROGRAPHY REPORT

Area
BUILDING 51 - CEREAL PRODUCTS
 Machine Id
CENTRIFUGE B GEAR BOX (S/N 51CNTB-GB)
 Component
Grease
 Fluid
SKF LGHP 2 (--- GAL)

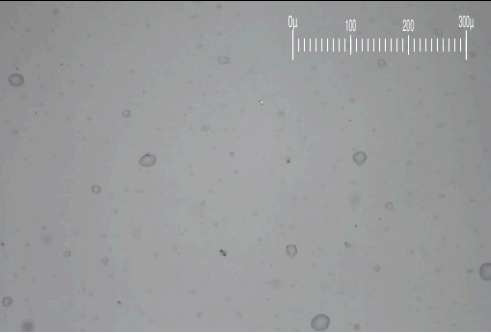
Magn: 200x Illum: BC



Magn: 50x Illum: RW



Magn: 100x Illum: RW



FERROGRAPHY		method	limit/base	current	history1	history2
Ferrous Rubbing	Scale 0-10	ASTM D7684*		■ 2		
Ferrous Sliding	Scale 0-10	ASTM D7684*		▲ 2		
Ferrous Cutting	Scale 0-10	ASTM D7684*		▲ 1		
Ferrous Rolling	Scale 0-10	ASTM D7684*				
Ferrous Break-in	Scale 0-10	ASTM D7684*				
Ferrous Spheres	Scale 0-10	ASTM D7684*		■ 1		
Ferrous Black Oxides	Scale 0-10	ASTM D7684*				
Ferrous Red Oxides	Scale 0-10	ASTM D7684*				
Ferrous Corrosive	Scale 0-10	ASTM D7684*				
Ferrous Other	Scale 0-10	ASTM D7684*				
Nonferrous Rubbing	Scale 0-10	ASTM D7684*				
Nonferrous Sliding	Scale 0-10	ASTM D7684*				
Nonferrous Cutting	Scale 0-10	ASTM D7684*				
Nonferrous Rolling	Scale 0-10	ASTM D7684*				
Nonferrous Other	Scale 0-10	ASTM D7684*				
Carbonaceous Material	Scale 0-10	ASTM D7684*				
Lubricant Degradation	Scale 0-10	ASTM D7684*				
Sand/Dirt	Scale 0-10	ASTM D7684*		■ 1		
Fibres	Scale 0-10	ASTM D7684*				
Spheres	Scale 0-10	ASTM D7684*				
Other	Scale 0-10	ASTM D7684*				

WEAR

Wear particle analysis indicates that the ferrous cutting and ferrous sliding particles are marginal. All other component wear rates are normal.

This page left intentionally blank