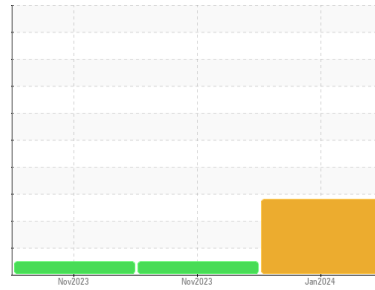




FUEL REPORT

Sample Rating Trend



WATER



Machine Id

IMO 9274501 LAB SEAL 310

Component

Diesel Fuel

Fluid

No.2 DIESEL FUEL (ULTRALOW SULPHUR) (--- GAL)

DIAGNOSIS

▲ Recommendation

We advise that you check for the source of water entry. We advise that you filter this fluid before use. We recommend you service the filters on this component. We recommend an early resample to monitor this condition.

▲ Contaminants

There is a light amount of silt (particulates < 14 microns in size) present in the fuel. There is a moderate concentration of water present in the fuel.

Fuel Condition

The fuel is still serviceable provided that the contaminant(s) can be reduced to acceptable levels.

| SAMPLE INFORMATION | | method | limit/base | current | history1 | history2 |
|--------------------|-------------|-------------|------------|--------------------|-------------|-------------|
| Sample Number | Client Info | | | PP | PP | PP |
| Sample Date | Client Info | | | 27 Jan 2024 | 22 Nov 2023 | 07 Nov 2023 |
| Machine Age | hrs | Client Info | | 0 | 0 | 0 |
| Sample Status | | | | ABNORMAL | NORMAL | NORMAL |

| PHYSICAL PROPERTIES | | method | limit/base | current | history1 | history2 |
|----------------------------|------|----------------|------------|--------------|----------|----------|
| Specific Gravity | | ASTM D1298* | 0.839 | 0.849 | 0.847 | 0.851 |
| Fuel Color | text | Visual Screen* | Yllow | Yllow | Yllow | Yllow |
| Visc @ 40°C | cSt | ASTM D7279(m) | 3.0 | 2.9 | 2.8 | 2.6 |
| Pensky-Martens Flash Point | °C | ASTM D7215* | 52 | 62.2 | 74.9 | 63.8 |

| SULFUR CONTENT | | method | limit/base | current | history1 | history2 |
|----------------|-----|---------------|------------|----------|----------|----------|
| Sulfur | ppm | ASTM D5185(m) | 10 | 6 | 11 | 6 |

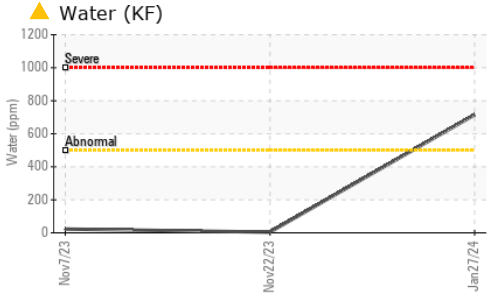
| DISTILLATION | | method | limit/base | current | history1 | history2 |
|------------------------|----|-------------|------------|------------|----------|----------|
| Initial Boiling Point | °C | ASTM D2887* | 165 | 173 | 188 | 175 |
| 5% Distillation Point | °C | ASTM D2887* | | 198 | 209 | 199 |
| 10% Distill Point | °C | ASTM D2887* | 201 | 210 | 218 | 210 |
| 15% Distillation Point | °C | ASTM D2887* | | 218 | 225 | 218 |
| 20% Distill Point | °C | ASTM D2887* | 216 | 227 | 233 | 226 |
| 30% Distill Point | °C | ASTM D2887* | 230 | 242 | 246 | 239 |
| 40% Distill Point | °C | ASTM D2887* | 243 | 255 | 257 | 249 |
| 50% Distill Point | °C | ASTM D2887* | 255 | 268 | 268 | 259 |
| 60% Distill Point | °C | ASTM D2887* | 267 | 282 | 281 | 271 |
| 70% Distill Point | °C | ASTM D2887* | 280 | 296 | 294 | 282 |
| 80% Distill Point | °C | ASTM D2887* | 295 | 312 | 309 | 296 |
| 85% Distillation Point | °C | ASTM D2887* | | 322 | 319 | 307 |
| 90% Distill Point | °C | ASTM D2887* | 310 | 333 | 330 | 318 |
| 95% Distillation Point | °C | ASTM D2887* | | 351 | 348 | 337 |
| Final Boiling Point | °C | ASTM D2887* | 341 | 370 | 369 | 370 |

| IGNITION QUALITY | | method | limit/base | current | history1 | history2 |
|------------------|--|-------------|------------|-----------|----------|----------|
| API Gravity | | ASTM D1298* | 37.7 | 35 | 35 | 34 |
| Cetane Index | | ASTM D4737* | <40.0 | 47 | 48 | 44 |

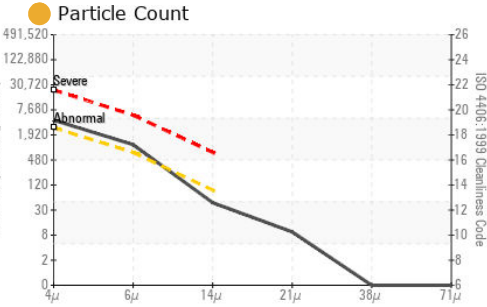
| CONTAMINANTS | | method | limit/base | current | history1 | history2 |
|--------------|-----|---------------|------------|----------------|----------|----------|
| Silicon | ppm | ASTM D5185(m) | <1.0 | 0 | 0 | 0 |
| Sodium | ppm | ASTM D5185(m) | <0.1 | 0 | 0 | <1 |
| Potassium | ppm | ASTM D5185(m) | <0.1 | 0 | <1 | 0 |
| Water | % | ASTM D6304* | <0.05 | ▲ 0.071 | 0.001 | 0.002 |
| ppm Water | ppm | ASTM D6304* | <500 | ▲ 715 | 4 | 23 |

| FLUID CLEANLINESS | | method | limit/base | current | history1 | history2 |
|-------------------|--|--------------|------------|-------------------|----------|----------|
| Particles >4µm | | ASTM D7647 | >2500 | ● 3801 | 643 | 1196 |
| Particles >6µm | | ASTM D7647 | >640 | ● 982 | 177 | 268 |
| Particles >14µm | | ASTM D7647 | >80 | 40 | 22 | 11 |
| Particles >21µm | | ASTM D7647 | >20 | 8 | 10 | 2 |
| Particles >38µm | | ASTM D7647 | >4 | 0 | 1 | 0 |
| Particles >71µm | | ASTM D7647 | >3 | 0 | 0 | 0 |
| Oil Cleanliness | | ISO 4406 (c) | >18/16/13 | ● 19/17/12 | 17/15/12 | 17/15/11 |

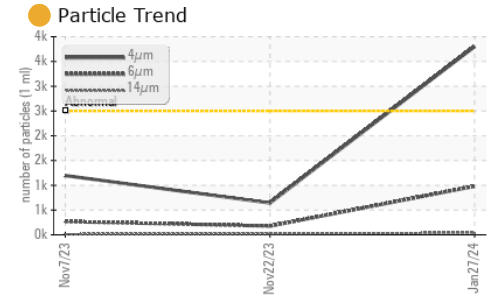
FUEL REPORT



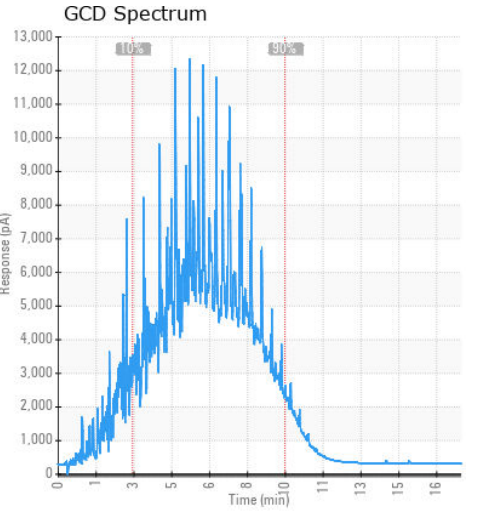
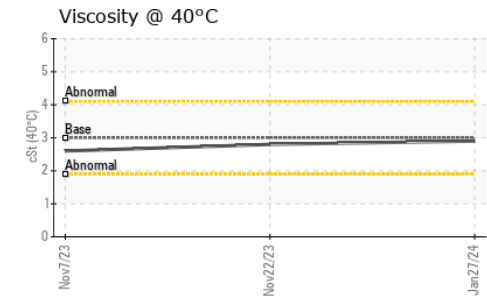
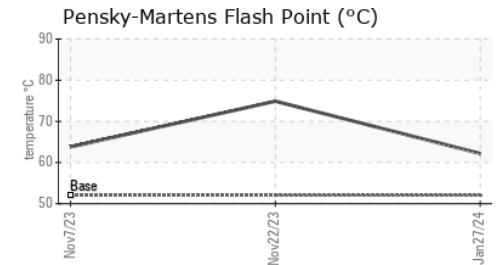
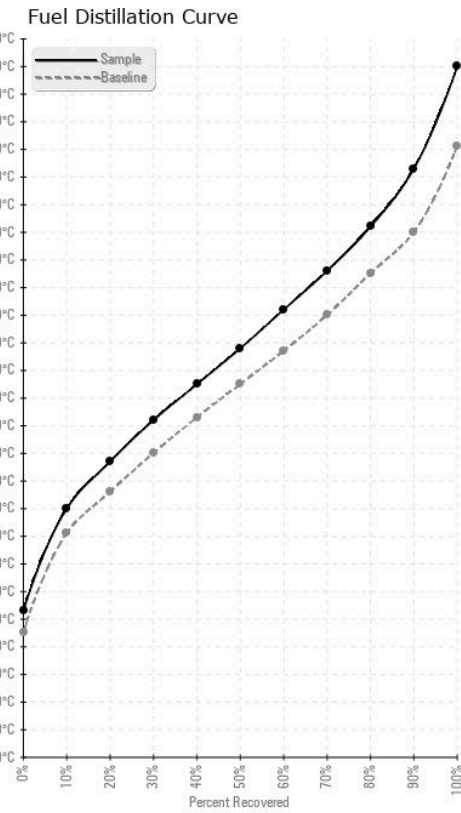
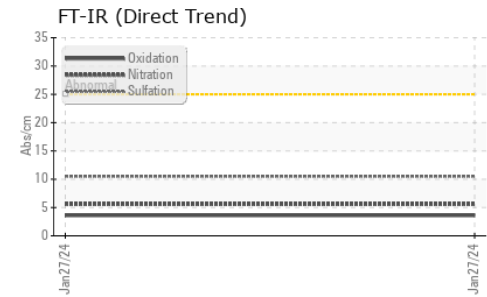
| HEAVY METALS | method | limit/base | current | history1 | history2 |
|--------------|--------|---------------|---------|----------|----------|
| Aluminum | ppm | ASTM D5185(m) | <0.1 | 0 | 0 |
| Nickel | ppm | ASTM D5185(m) | <0.1 | 0 | 0 |
| Lead | ppm | ASTM D5185(m) | <0.1 | 0 | 0 |
| Vanadium | ppm | ASTM D5185(m) | <0.1 | 0 | 0 |
| Iron | ppm | ASTM D5185(m) | <0.1 | <1 | <1 |
| Calcium | ppm | ASTM D5185(m) | <0.1 | 0 | 0 |
| Magnesium | ppm | ASTM D5185(m) | <0.1 | 0 | 0 |
| Phosphorus | ppm | ASTM D5185(m) | <0.1 | 0 | 0 |
| Zinc | ppm | ASTM D5185(m) | <0.1 | 0 | 0 |



| SAMPLE IMAGES | method | limit/base | current | history1 | history2 |
|---------------|--------|------------|---------|----------|----------|
| Color | | | | | |
| Bottom | | | | | |



GRAPHS



Laboratory : WearCheck - C8-1175 Appleby Line, Burlington, ON L7L 5H9
Sample No. : PP
Lab Number : 02646808
Unique Number : 5812360
Test Package : FUEL (Additional Tests: Bacteria, CC Flash, FT-IR, PrtCount)

HUSKY SEA ROSE /AKER SOLUTIONS
 PO BOX 20
 ST. JOHN'S, NL
 CA A1C 6C9
 Contact: Nick Fewer
 nick.fewer@akersolutions.com
 T: (709)757-4582
 F: (709)722-8730

To discuss this sample report, contact Customer Service at 1-800-268-2131.
 Test denoted (*) outside scope of accreditation, (m) method modified, (e) tested at external lab.
 Validity of results and interpretation are based on the sample and information as supplied.