



FUEL REPORT

Sample Rating Trend



NORMAL



Machine Id
ALGOMA #1

Component
Diesel Fuel

Fluid
No.2 DIESEL FUEL (ULTRALOW SULPHUR) (--- GAL)

DIAGNOSIS

Recommendation

Laboratory test indicate that this fuel is suitable for use and meets all test requirements. We advise that you filter this fluid before use. Resample at the next service interval to monitor.

Contaminants

The water content is negligible. There is no indication of any contamination in the diesel fuel.

Fuel Condition

All laboratory tests indicate that this sample meets specifications for No.2 ultra-low-sulfur diesel fuel (US EPA/CGSB-3.517-3 type B).

SAMPLE INFORMATION		method	limit/base	current	history1	history2
Sample Number	Client Info			PP	---	---
Sample Date	Client Info			08 Jul 2024	---	---
Machine Age	hrs	Client Info		0	---	---
Sample Status				NORMAL	---	---

PHYSICAL PROPERTIES		method	limit/base	current	history1	history2
Specific Gravity		ASTM D1298*	0.839	0.855	---	---
Fuel Color	text	Visual Screen*	Yellow	Orang	---	---
Visc @ 40°C	cSt	ASTM D7279(m)	3.0	2.5	---	---
Pensky-Martens Flash Point	°C	ASTM D7215*	52	64.5	---	---

SULFUR CONTENT		method	limit/base	current	history1	history2
Sulfur	ppm	ASTM D5185(m)	10	13	---	---

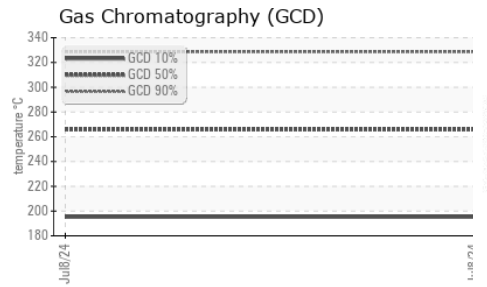
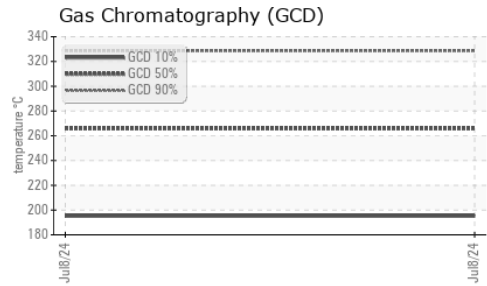
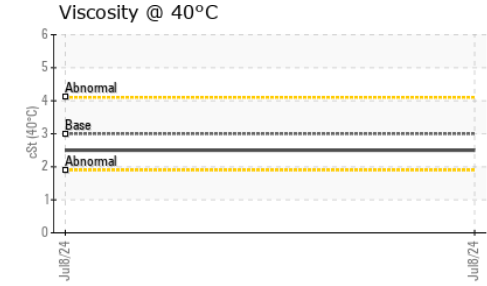
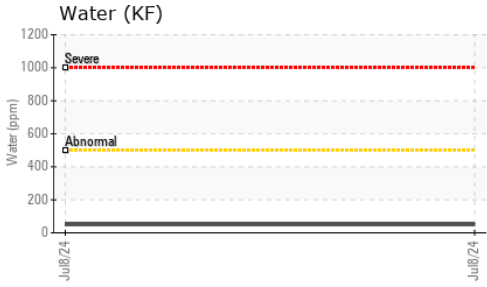
DISTILLATION		method	limit/base	current	history1	history2
Initial Boiling Point	°C	ASTM D2887*	165	176	---	---
5% Distillation Point	°C	ASTM D2887*		206	---	---
10% Distill Point	°C	ASTM D2887*	201	216	---	---
15% Distillation Point	°C	ASTM D2887*		224	---	---
20% Distill Point	°C	ASTM D2887*	216	231	---	---
30% Distill Point	°C	ASTM D2887*	230	243	---	---
40% Distill Point	°C	ASTM D2887*	243	252	---	---
50% Distill Point	°C	ASTM D2887*	255	262	---	---
60% Distill Point	°C	ASTM D2887*	267	272	---	---
70% Distill Point	°C	ASTM D2887*	280	282	---	---
80% Distill Point	°C	ASTM D2887*	295	293	---	---
85% Distillation Point	°C	ASTM D2887*		301	---	---
90% Distill Point	°C	ASTM D2887*	310	310	---	---
95% Distillation Point	°C	ASTM D2887*		324	---	---
Final Boiling Point	°C	ASTM D2887*	341	349	---	---

IGNITION QUALITY		method	limit/base	current	history1	history2
API Gravity		ASTM D1298*	37.7	33	---	---
Cetane Index		ASTM D4737*	<40.0	43	---	---

CONTAMINANTS		method	limit/base	current	history1	history2
Silicon	ppm	ASTM D5185(m)	<1.0	<1	---	---
Sodium	ppm	ASTM D5185(m)	<0.1	0	---	---
Potassium	ppm	ASTM D5185(m)	<0.1	0	---	---
Water	%	ASTM D6304*	<0.05	0.004	---	---
ppm Water	ppm	ASTM D6304*	<500	50	---	---



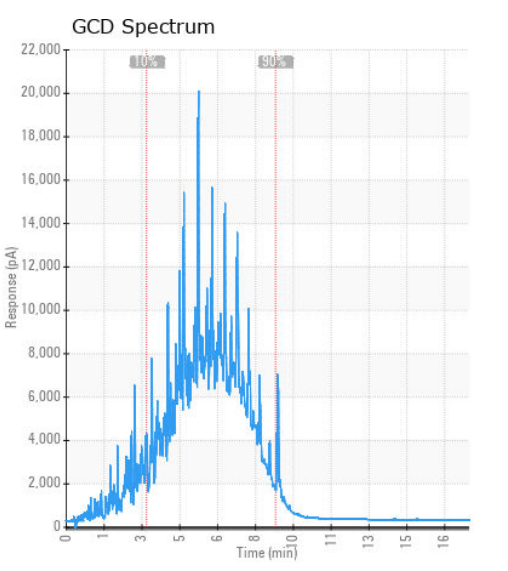
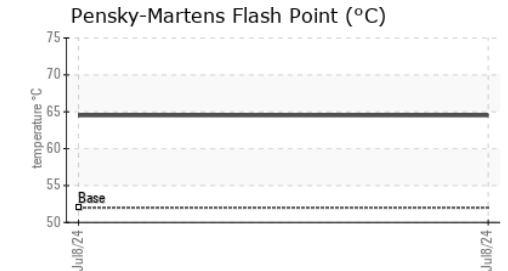
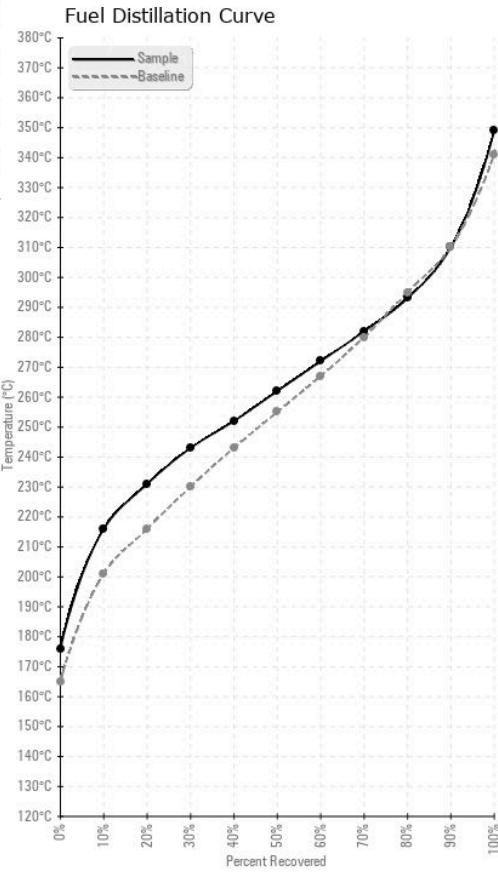
FUEL REPORT



HEAVY METALS	method	limit/base	current	history1	history2	
Aluminum	ppm	ASTM D5185(m)	<0.1	<1	---	---
Nickel	ppm	ASTM D5185(m)	<0.1	0	---	---
Lead	ppm	ASTM D5185(m)	<0.1	0	---	---
Vanadium	ppm	ASTM D5185(m)	<0.1	0	---	---
Iron	ppm	ASTM D5185(m)	<0.1	<1	---	---
Calcium	ppm	ASTM D5185(m)	<0.1	1	---	---
Magnesium	ppm	ASTM D5185(m)	<0.1	0	---	---
Phosphorus	ppm	ASTM D5185(m)	<0.1	0	---	---
Zinc	ppm	ASTM D5185(m)	<0.1	0	---	---

SAMPLE IMAGES	method	limit/base	current	history1	history2
Color				no image	no image
Bottom				no image	no image

GRAPHS



Laboratory : WearCheck - C8-1175 Appleby Line, Burlington, ON L7L 5H9
Sample No. : PP **Received** : 09 Jul 2024
Lab Number : 02646813 **Tested** : 15 Jul 2024
Unique Number : 5812365 **Diagnosed** : 15 Jul 2024 - Kevin Marson
Test Package : FUEL (Additional Tests: CC Flash, PrtCount)

Triple M Metals
 670 Strathearne Avenue
 Hamilton, ON
 CA L8H 7N7
 Contact: Brad Pollard
 bpollard@triplemmetal.com
 T: (905)547-8888
 F: (905)547-9994

To discuss this sample report, contact Customer Service at 1-800-268-2131.
 Test denoted (*) outside scope of accreditation, (m) method modified, (e) tested at external lab.
 Validity of results and interpretation are based on the sample and information as supplied.