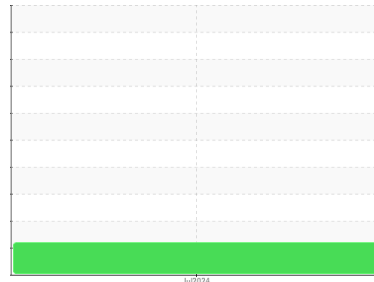




FUEL REPORT

Sample Rating Trend



ISO



Machine Id
YARD FUEL

Component
Diesel Fuel

Fluid
No.2 DIESEL FUEL (ULTRALOW SULPHUR) (--- GAL)

DIAGNOSIS

Recommendation

Laboratory test indicate that this fuel is suitable for use and meets all test requirements. We advise that you filter this fluid before use. We recommend you service the filters on this component. We recommend an early resample to monitor this condition.

Contaminants

There is a moderate amount of silt (particulates < 14 microns in size) present in the fuel. The water content is negligible.

Fuel Condition

All laboratory tests indicate that this sample meets specifications for No.2 ultra-low-sulfur diesel fuel (US EPA/CGSB-3.517-3 type B). The fuel is still serviceable provided that the contaminant(s) can be reduced to acceptable levels.

SAMPLE INFORMATION	method	limit/base	current	history1	history2
Sample Number	Client Info		PP	---	---
Sample Date	Client Info		08 Jul 2024	---	---
Machine Age	hrs Client Info		0	---	---
Sample Status			ABNORMAL	---	---

PHYSICAL PROPERTIES	method	limit/base	current	history1	history2
Specific Gravity	ASTM D1298*	0.839	0.838	---	---
Fuel Color	text Visual Screen*	Yllow	Orang	---	---
Visc @ 40°C	cSt ASTM D7279(m)	3.0	2.3	---	---
Pensky-Martens Flash Point	°C ASTM D7215*	52	51.5	---	---

SULFUR CONTENT	method	limit/base	current	history1	history2
Sulfur	ppm ASTM D5185(m)	10	6	---	---

DISTILLATION	method	limit/base	current	history1	history2
Initial Boiling Point	°C ASTM D2887*	165	158	---	---
5% Distillation Point	°C ASTM D2887*		179	---	---
10% Distill Point	°C ASTM D2887*	201	187	---	---
15% Distillation Point	°C ASTM D2887*		195	---	---
20% Distill Point	°C ASTM D2887*	216	203	---	---
30% Distill Point	°C ASTM D2887*	230	217	---	---
40% Distill Point	°C ASTM D2887*	243	232	---	---
50% Distill Point	°C ASTM D2887*	255	247	---	---
60% Distill Point	°C ASTM D2887*	267	264	---	---
70% Distill Point	°C ASTM D2887*	280	281	---	---
80% Distill Point	°C ASTM D2887*	295	300	---	---
85% Distillation Point	°C ASTM D2887*		313	---	---
90% Distill Point	°C ASTM D2887*	310	327	---	---
95% Distillation Point	°C ASTM D2887*		351	---	---
Final Boiling Point	°C ASTM D2887*	341	383	---	---

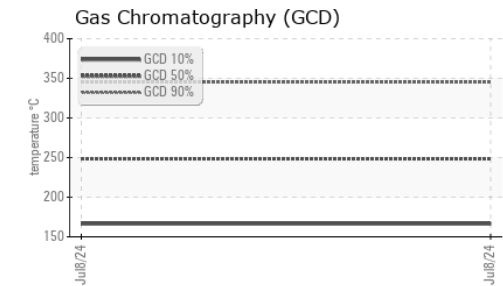
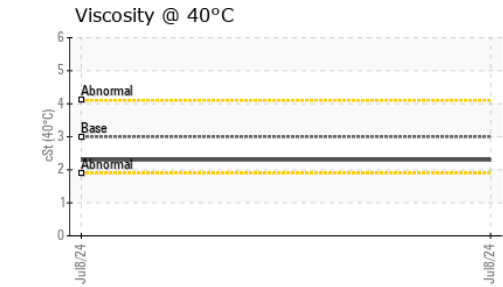
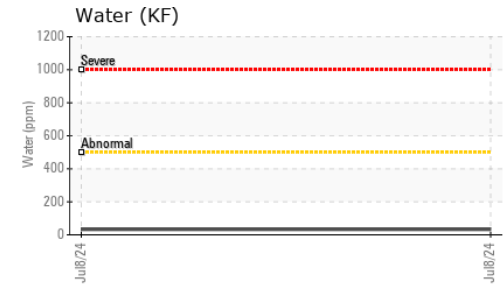
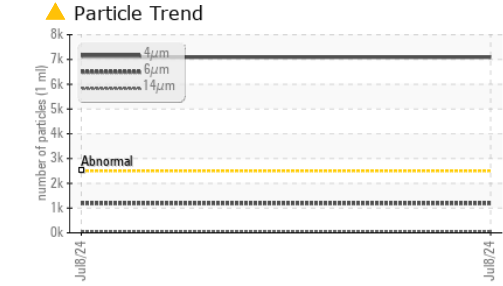
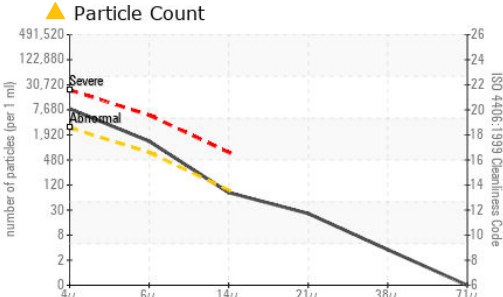
IGNITION QUALITY	method	limit/base	current	history1	history2
API Gravity	ASTM D1298*	37.7	37	---	---
Cetane Index	ASTM D4737*	<40.0	46	---	---

CONTAMINANTS	method	limit/base	current	history1	history2
Silicon	ppm ASTM D5185(m)	<1.0	0	---	---
Sodium	ppm ASTM D5185(m)	<0.1	0	---	---
Potassium	ppm ASTM D5185(m)	<0.1	0	---	---
Water	% ASTM D6304*	<0.05	0.003	---	---
ppm Water	ppm ASTM D6304*	<500	33	---	---

FLUID CLEANLINESS	method	limit/base	current	history1	history2
Particles >4µm	ASTM D7647	>2500	▲ 7090	---	---
Particles >6µm	ASTM D7647	>640	● 1189	---	---
Particles >14µm	ASTM D7647	>80	70	---	---
Particles >21µm	ASTM D7647	>20	22	---	---
Particles >38µm	ASTM D7647	>4	3	---	---
Particles >71µm	ASTM D7647	>3	0	---	---
Oil Cleanliness	ISO 4406 (c)	>18/16/13	▲ 20/17/13	---	---



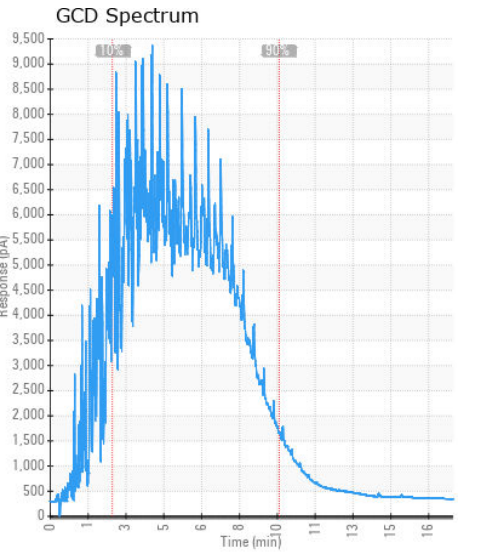
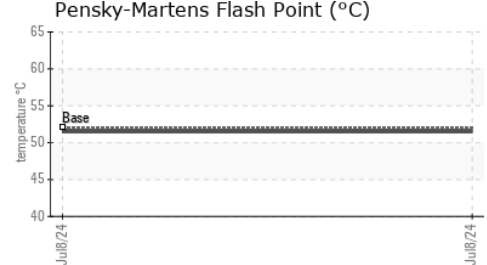
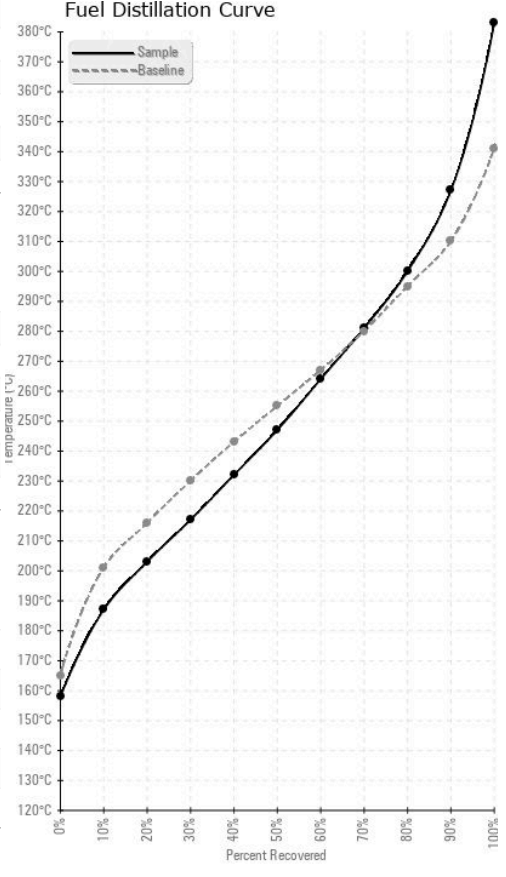
FUEL REPORT



HEAVY METALS	method	limit/base	current	history1	history2	
Aluminum	ppm	ASTM D5185(m)	<0.1	0	---	---
Nickel	ppm	ASTM D5185(m)	<0.1	0	---	---
Lead	ppm	ASTM D5185(m)	<0.1	0	---	---
Vanadium	ppm	ASTM D5185(m)	<0.1	0	---	---
Iron	ppm	ASTM D5185(m)	<0.1	0	---	---
Calcium	ppm	ASTM D5185(m)	<0.1	0	---	---
Magnesium	ppm	ASTM D5185(m)	<0.1	0	---	---
Phosphorus	ppm	ASTM D5185(m)	<0.1	0	---	---
Zinc	ppm	ASTM D5185(m)	<0.1	0	---	---

SAMPLE IMAGES	method	limit/base	current	history1	history2
Color				no image	no image
Bottom				no image	no image

GRAPHS



Laboratory : WearCheck - C8-1175 Appleby Line, Burlington, ON L7L 5H9
Sample No. : PP **Received** : 09 Jul 2024
Lab Number : 02646815 **Tested** : 15 Jul 2024
Unique Number : 5812367 **Diagnosed** : 15 Jul 2024 - Kevin Marson
Test Package : FUEL (Additional Tests: CC Flash, PrtCount)

Triple M Metals
 670 Strathearne Avenue
 Hamilton, ON
 CA L8H 7N7
 Contact: Brad Pollard
 bpollard@triplemmetal.com
 T: (905)547-8888
 F: (905)547-9994

To discuss this sample report, contact Customer Service at 1-800-268-2131.
 Test denoted (*) outside scope of accreditation, (m) method modified, (e) tested at external lab.
 Validity of results and interpretation are based on the sample and information as supplied.