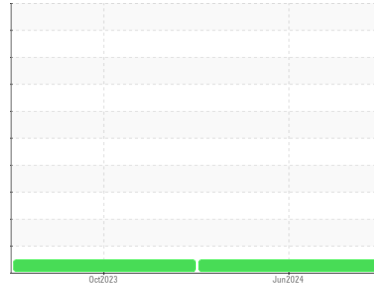




OIL ANALYSIS REPORT

Sample Rating Trend



NORMAL



Area
ORIN CONTRACTORS
 Machine Id
874
 Component
Diesel Engine
 Fluid
PETRO CANADA 15W40 (--- GAL)

DIAGNOSIS

Recommendation

Resample at the next service interval to monitor.

Wear

All component wear rates are normal.

Contamination

There is no indication of any contamination in the oil.

Fluid Condition

The condition of the oil is acceptable for the time in service.

SAMPLE INFORMATION		method	limit/base	current	history1	history2
Sample Number	Client Info			WC0932556	LH0275096	---
Sample Date	Client Info			15 Jun 2024	11 Oct 2023	---
Machine Age	hrs	Client Info		0	0	---
Oil Age	hrs	Client Info		0	0	---
Oil Changed	Client Info			Changed	Changed	---
Sample Status				NORMAL	NORMAL	---

CONTAMINATION		method	limit/base	current	history1	history2
Fuel	WC Method	>5		<1.0	<1.0	---
Water	WC Method	>0.2		NEG	NEG	---
Glycol	WC Method			NEG	NEG	---

WEAR METALS		method	limit/base	current	history1	history2
Iron	ppm	ASTM D5185(m)	>100	54	92	---
Chromium	ppm	ASTM D5185(m)	>20	1	2	---
Nickel	ppm	ASTM D5185(m)	>4	<1	<1	---
Titanium	ppm	ASTM D5185(m)		<1	0	---
Silver	ppm	ASTM D5185(m)	>3	0	<1	---
Aluminum	ppm	ASTM D5185(m)	>20	10	11	---
Lead	ppm	ASTM D5185(m)	>40	0	<1	---
Copper	ppm	ASTM D5185(m)	>330	3	8	---
Tin	ppm	ASTM D5185(m)	>15	0	0	---
Antimony	ppm	ASTM D5185(m)		0	0	---
Vanadium	ppm	ASTM D5185(m)		0	0	---
Beryllium	ppm	ASTM D5185(m)		0	0	---
Cadmium	ppm	ASTM D5185(m)		0	0	---

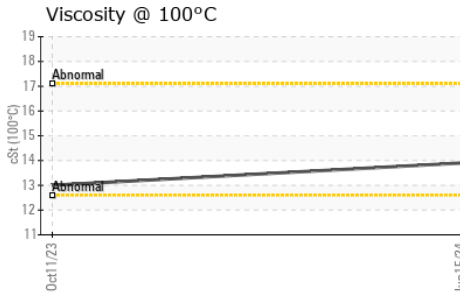
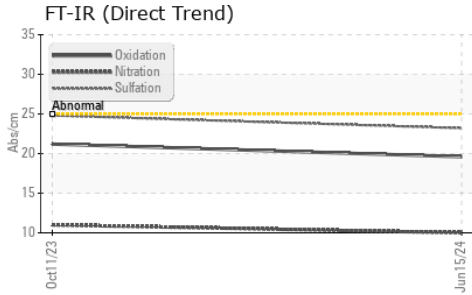
ADDITIVES		method	limit/base	current	history1	history2
Boron	ppm	ASTM D5185(m)		15	23	---
Barium	ppm	ASTM D5185(m)		0	<1	---
Molybdenum	ppm	ASTM D5185(m)		62	68	---
Manganese	ppm	ASTM D5185(m)		<1	<1	---
Magnesium	ppm	ASTM D5185(m)		981	1042	---
Calcium	ppm	ASTM D5185(m)		1252	1268	---
Phosphorus	ppm	ASTM D5185(m)		972	1023	---
Zinc	ppm	ASTM D5185(m)		1203	1326	---
Sulfur	ppm	ASTM D5185(m)		2350	2334	---
Lithium	ppm	ASTM D5185(m)		<1	<1	---

CONTAMINANTS		method	limit/base	current	history1	history2
Silicon	ppm	ASTM D5185(m)	>25	13	14	---
Sodium	ppm	ASTM D5185(m)		2	3	---
Potassium	ppm	ASTM D5185(m)	>20	<1	1	---

INFRA-RED		method	limit/base	current	history1	history2
Soot %	%	ASTM D7844*	>3	0.7	0.9	---
Nitration	Abs/cm	ASTM D7624*	>20	10.0	11.0	---
Sulfation	Abs/.1mm	ASTM D7415*	>30	23.2	24.8	---



OIL ANALYSIS REPORT

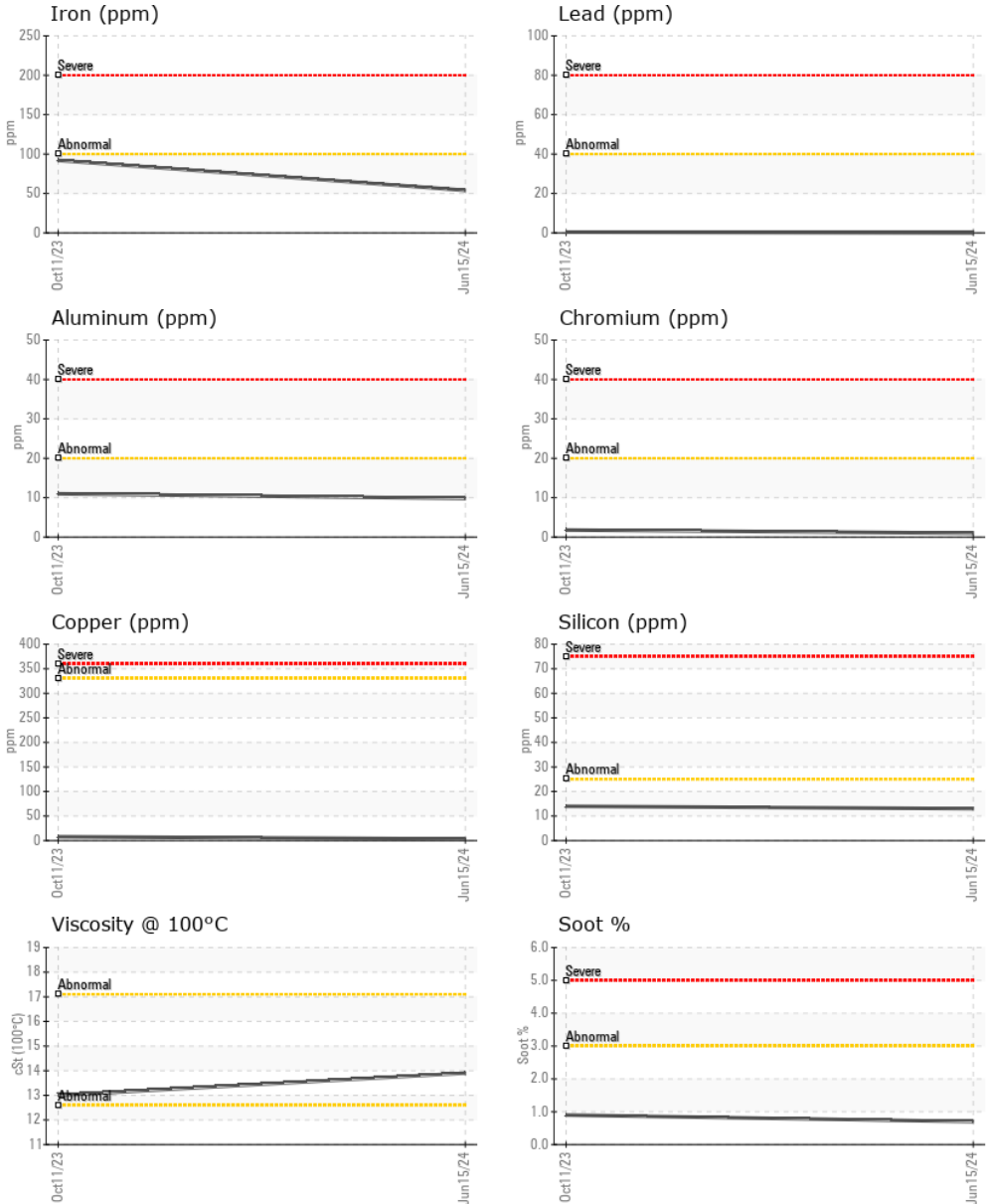


FLUID DEGRADATION	method	limit/base	current	history1	history2	
Oxidation	Abs./1mm	ASTM D7414*	>25	19.6	21.2	---

VISUAL	method	limit/base	current	history1	history2	
Emulsified Water	scalar	Visual*	>0.2	NEG	NEG	---
Free Water	scalar	Visual*		NEG	NEG	---

FLUID PROPERTIES	method	limit/base	current	history1	history2
Visc @ 100°C	cSt	ASTM D7279(m)	13.9	13.0	---

GRAPHS



Laboratory : WearCheck - C8-1175 Appleby Line, Burlington, ON L7L 5H9 **RONI/IRON SHORE EXCAVATING LTD.**
Sample No. : WC0932556 **Received** : 10 Jul 2024 100 MACINTOSH BLVD
Lab Number : **02646963** **Tested** : 10 Jul 2024 VAUGHAN, ON
Unique Number : 5812515 **Diagnosed** : 10 Jul 2024 - Wes Davis CA L4K 4P3
Test Package : MOBCE

To discuss this sample report, contact Customer Service at 1-800-268-2131.

Test denoted (*) outside scope of accreditation, (m) method modified, (e) tested at external lab.

Validity of results and interpretation are based on the sample and information as supplied.

Contact: Service Team
service.team@roni.ca

T:
F: