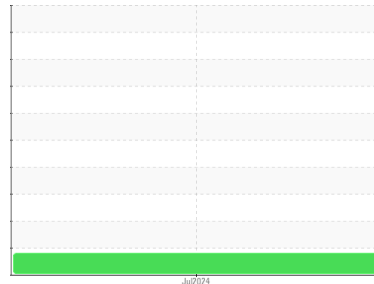




FUEL REPORT

Sample Rating Trend



WATER



Area
[BQ26759]
 Machine Id
FALAR DEAV
 Component
Diesel Fuel
 Fluid
No.2 DIESEL FUEL (ULTRALOW SULPHUR) (--- GAL)

DIAGNOSIS

▲ Recommendation

Nous vous recommandons de vérifier tous les endroits par lesquels des contaminants peuvent pénétrer dans le système.

▲ Contaminants

Le point d'éclair est inférieur à la normale. L'odeur de l'échantillon et le point d'éclair peu élevé indiquent une dilution avec une substance volatile.

▲ Fuel Condition

le carburant ne peut plus être utilisée en raison de la présence de contaminants.

SAMPLE INFORMATION

method	limit/base	current	history1	history2
Sample Number	Client Info	WC0961610	---	---
Sample Date	Client Info	09 Jul 2024	---	---
Machine Age	hrs Client Info	0	---	---
Sample Status		SEVERE	---	---

PHYSICAL PROPERTIES

method	limit/base	current	history1	history2
Visc @ 40°C	cSt ASTM D7279(m)	3.0 2.3	---	---
Pensky-Martens Flash Point	°C ASTM D7215*	52 ▲ 8.3	---	---

SULFUR CONTENT

method	limit/base	current	history1	history2
Sulfur	ppm ASTM D5185(m)	10 16	---	---

DISTILLATION

method	limit/base	current	history1	history2
Initial Boiling Point	°C ASTM D2887*	165 101	---	---
5% Distillation Point	°C ASTM D2887*	149	---	---
10% Distill Point	°C ASTM D2887*	201 174	---	---
15% Distillation Point	°C ASTM D2887*	192	---	---
20% Distill Point	°C ASTM D2887*	216 209	---	---
30% Distill Point	°C ASTM D2887*	230 234	---	---
40% Distill Point	°C ASTM D2887*	243 252	---	---
50% Distill Point	°C ASTM D2887*	255 270	---	---
60% Distill Point	°C ASTM D2887*	267 284	---	---
70% Distill Point	°C ASTM D2887*	280 299	---	---
80% Distill Point	°C ASTM D2887*	295 313	---	---
85% Distillation Point	°C ASTM D2887*	322	---	---
90% Distill Point	°C ASTM D2887*	310 332	---	---
95% Distillation Point	°C ASTM D2887*	347	---	---
Final Boiling Point	°C ASTM D2887*	341 366	---	---

IGNITION QUALITY

method	limit/base	current	history1	history2
API Gravity	ASTM D1298*	37.7 37	---	---
Cetane Index	ASTM D4737*	<40.0 49	---	---

CONTAMINANTS

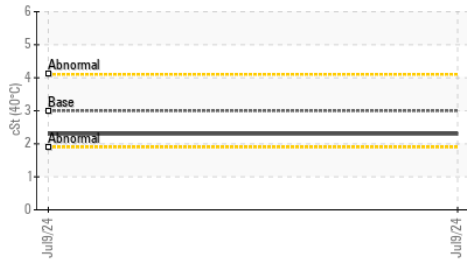
method	limit/base	current	history1	history2
Silicon	ppm ASTM D5185(m)	<1.0 <1	---	---
Sodium	ppm ASTM D5185(m)	<0.1 1	---	---
Potassium	ppm ASTM D5185(m)	<0.1 0	---	---

HEAVY METALS

method	limit/base	current	history1	history2
Aluminum	ppm ASTM D5185(m)	<0.1 <1	---	---
Nickel	ppm ASTM D5185(m)	<0.1 0	---	---
Lead	ppm ASTM D5185(m)	<0.1 0	---	---
Vanadium	ppm ASTM D5185(m)	<0.1 0	---	---
Iron	ppm ASTM D5185(m)	<0.1 0	---	---
Calcium	ppm ASTM D5185(m)	<0.1 <1	---	---
Magnesium	ppm ASTM D5185(m)	<0.1 0	---	---
Phosphorus	ppm ASTM D5185(m)	<0.1 0	---	---
Zinc	ppm ASTM D5185(m)	<0.1 0	---	---

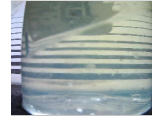
FUEL REPORT

Viscosity @ 40°C



SAMPLE IMAGES method limit/base current history1 history2

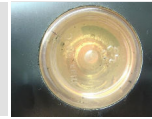
Color



no image

no image

Bottom

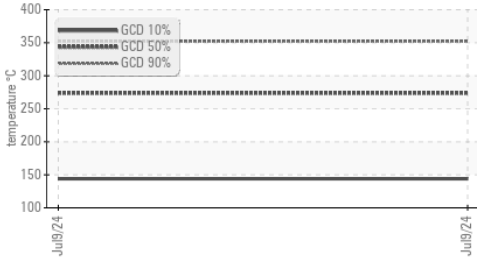


no image

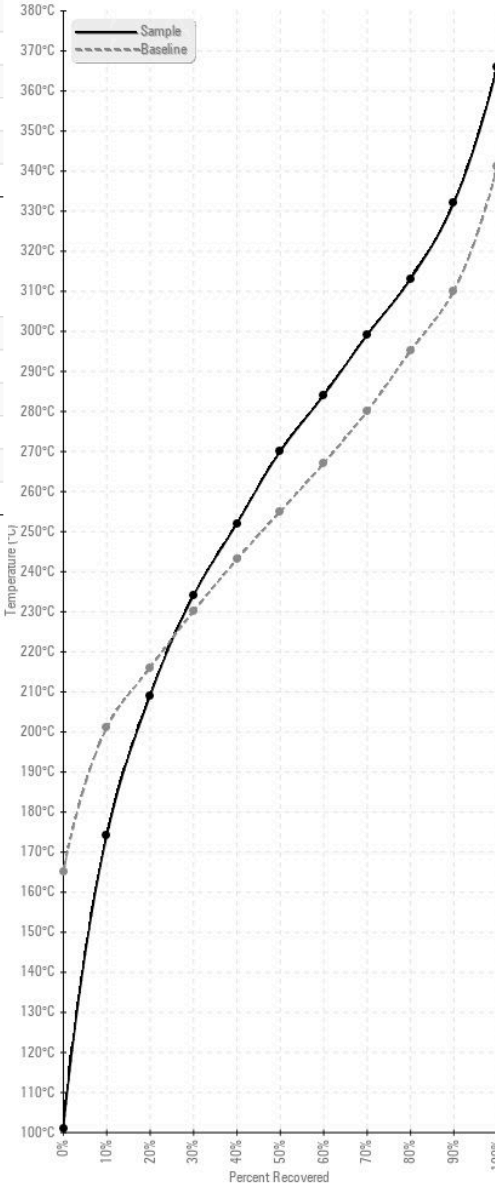
no image

GRAPHS

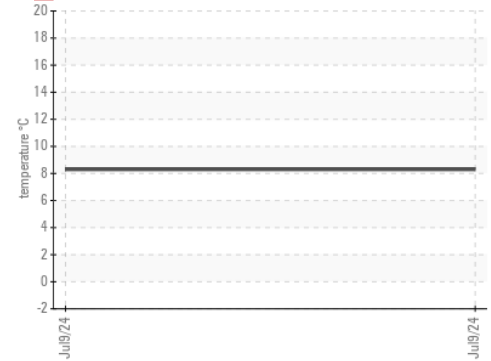
Gas Chromatography (GCD)



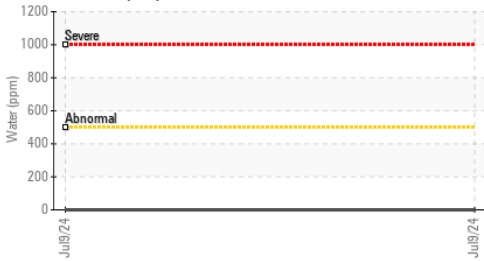
Fuel Distillation Curve



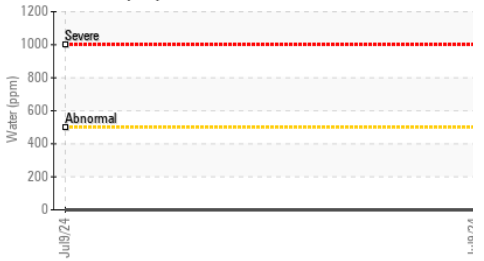
▲ Pensky-Martens Flash Point (°C)



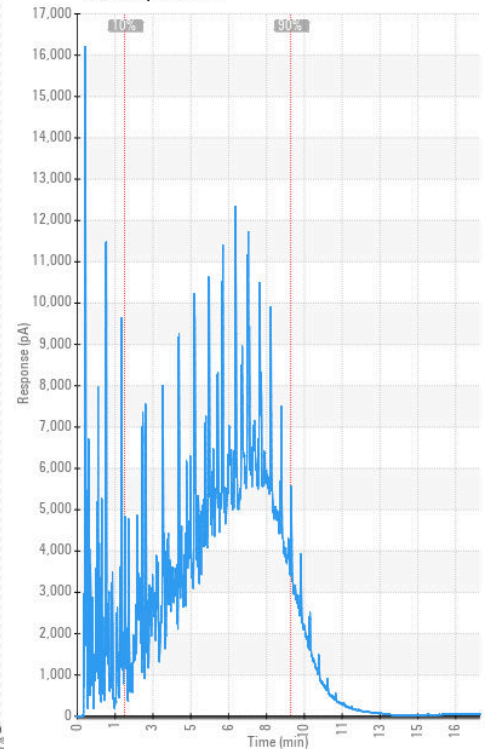
Water (KF)



Water (KF)



GCD Spectrum



Laboratory : WearCheck - C8-1175 Appleby Line, Burlington, ON L7L 5H9
Sample No. : WC0961610 **Received** : 11 Jul 2024
Lab Number : 02647456 **Tested** : 15 Jul 2024
Unique Number : 5813008 **Diagnosed** : 15 Jul 2024 - Kevin Marson
Test Package : TEST (Additional Tests: API, Bacteria, CC Flash, Cetane, Fuel, GCD, ICP, KF, KV40, PrtCount, Spat)

Camions Mack St-Foy
 2550 Rue Watt
 Quebec, QC
 CA G1P 3T4
 Contact: Carl St-Martin
 carl.stmartin@camionsmsf.com
 T: (418)951-9847
 F: (418)651-8790

To discuss this sample report, contact Customer Service at 1-800-268-2131.
 Test denoted (*) outside scope of accreditation, (m) method modified, (e) tested at external lab.
 Validity of results and interpretation are based on the sample and information as supplied.