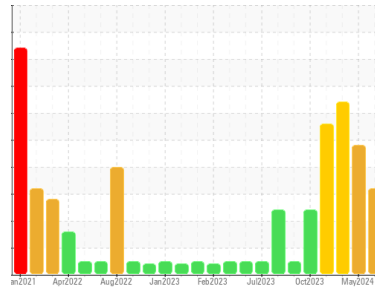




OIL ANALYSIS REPORT

Sample Rating Trend



WATER



Area
Packaging - Canline
 Machine Id
FV1-FLR (S/N 10339235)
 Component
Gearbox
 Fluid
JAX FGG-AW ISO 220 (12 GAL)

DIAGNOSIS

Recommendation

We advise that you check for the source of water entry. Check seals and/or filters for points of contaminant entry. The oil change at the time of sampling has been noted. The air breather requires service. If unrated, we recommend that you replace with a suitable micron rated and/or desiccant air breather. If rated, we recommend that you service/replace the breather. We advise that you use off-line filtration with water adsorbent filters to attempt to remove the water from this oil. We recommend an early resample to monitor this condition.

Wear

Iron ppm levels are abnormal. The low ferrous density (PQ) index indicates the wear metal levels are due to corrosion.

Contamination

There is a moderate concentration of water present in the oil. Free water present.

Fluid Condition

The AN level is acceptable for this fluid. The oil is no longer serviceable as a result of the abnormal and/or severe wear.

SAMPLE INFORMATION

	method	limit/base	current	history1	history2
Sample Number	Client Info		WC0952484	WC0906555	WC0794610
Sample Date	Client Info		09 Jul 2024	05 May 2024	18 Feb 2024
Machine Age	mths	Client Info	64	62	59
Oil Age	mths	Client Info	2	3	15
Oil Changed	Client Info		Changed	Changed	Not Changd
Sample Status			ABNORMAL	ABNORMAL	ABNORMAL

CONTAMINATION

	method	limit/base	current	history1	history2
Water	WC Method	>0.2	NEG	NEG	NEG

WEAR METALS

	method	limit/base	current	history1	history2
PQ	ASTM D8184*		26	20	▲ 135
Iron	ppm	ASTM D5185(m) >200	▲ 486	▲ 364	▲ 305
Chromium	ppm	ASTM D5185(m) >15	2	2	3
Nickel	ppm	ASTM D5185(m) >15	<1	0	<1
Titanium	ppm	ASTM D5185(m)	0	0	0
Silver	ppm	ASTM D5185(m)	0	0	0
Aluminum	ppm	ASTM D5185(m) >25	<1	0	<1
Lead	ppm	ASTM D5185(m) >100	0	0	<1
Copper	ppm	ASTM D5185(m) >200	<1	<1	<1
Tin	ppm	ASTM D5185(m) >25	0	0	0
Antimony	ppm	ASTM D5185(m) >5	0	0	0
Vanadium	ppm	ASTM D5185(m)	0	0	0
Beryllium	ppm	ASTM D5185(m)	0	0	0
Cadmium	ppm	ASTM D5185(m)	0	0	0

ADDITIVES

	method	limit/base	current	history1	history2
Boron	ppm	ASTM D5185(m)	<1	<1	<1
Barium	ppm	ASTM D5185(m)	0	0	0
Molybdenum	ppm	ASTM D5185(m)	0	0	0
Manganese	ppm	ASTM D5185(m)	2	1	2
Magnesium	ppm	ASTM D5185(m)	<1	0	0
Calcium	ppm	ASTM D5185(m)	4	3	9
Phosphorus	ppm	ASTM D5185(m)	472	465	532
Zinc	ppm	ASTM D5185(m)	4	4	7
Sulfur	ppm	ASTM D5185(m)	421	474	626
Lithium	ppm	ASTM D5185(m)	<1	<1	<1

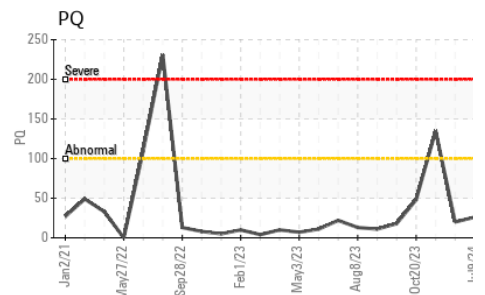
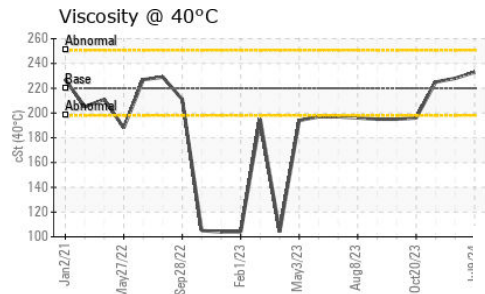
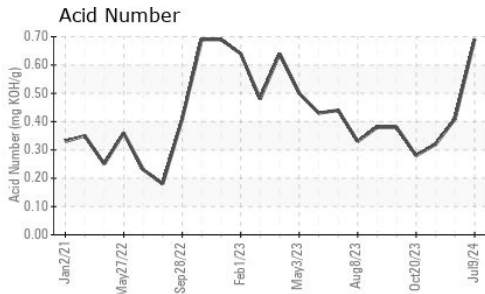
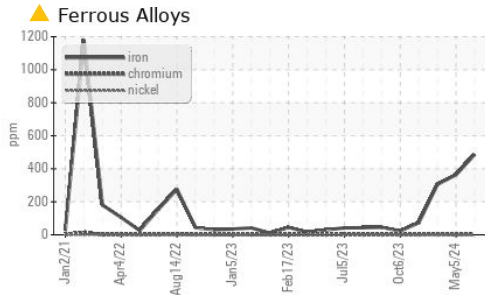
CONTAMINANTS

	method	limit/base	current	history1	history2
Silicon	ppm	ASTM D5185(m) >50	3	2	1
Sodium	ppm	ASTM D5185(m)	<1	<1	<1
Potassium	ppm	ASTM D5185(m) >20	0	<1	<1

FLUID DEGRADATION

	method	limit/base	current	history1	history2
Acid Number (AN)	mg KOH/g	ASTM D974*	0.69	0.41	0.32

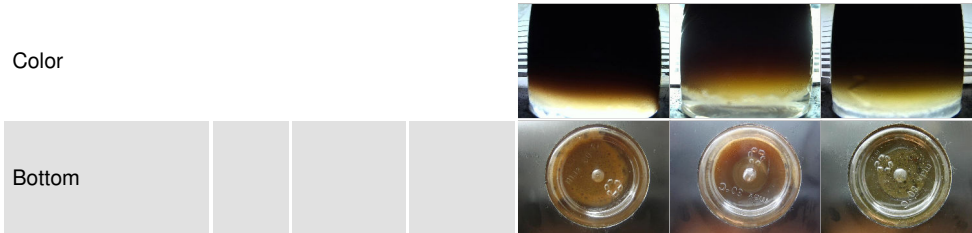
OIL ANALYSIS REPORT



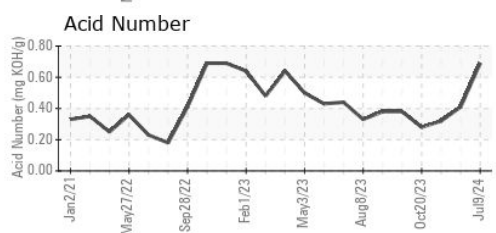
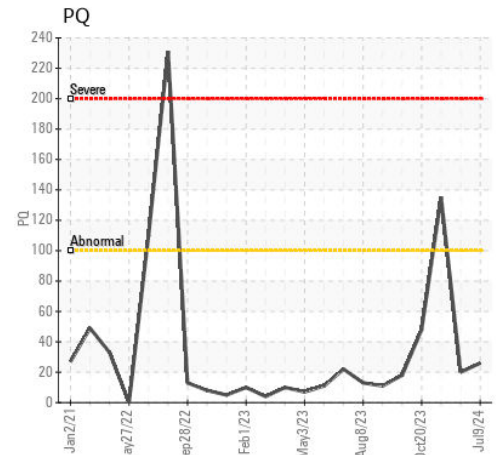
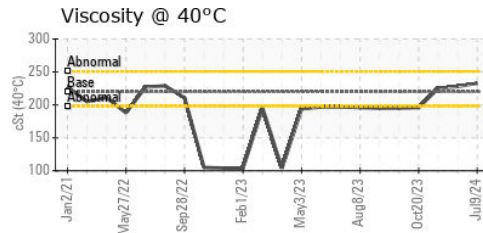
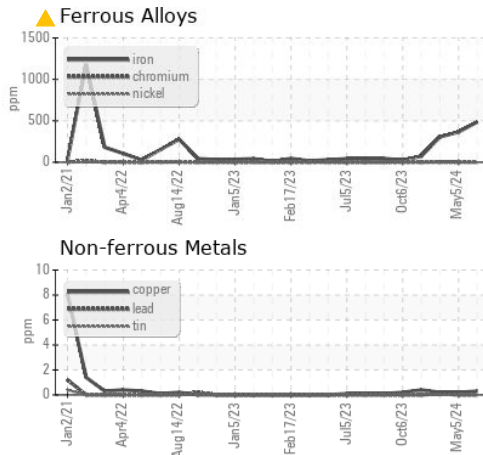
VISUAL	method	limit/base	current	history1	history2
White Metal	scalar	Visual*	NONE	VLITE	NONE
Yellow Metal	scalar	Visual*	NONE	NONE	NONE
Precipitate	scalar	Visual*	NONE	NONE	▲ MODER
Silt	scalar	Visual*	NONE	NONE	NONE
Debris	scalar	Visual*	NONE	VLITE	NONE
Sand/Dirt	scalar	Visual*	NONE	NONE	LIGHT
Appearance	scalar	Visual*	NORML	▲ WGOIL	▲ LAYRD
Odor	scalar	Visual*	NORML	NORML	NORML
Emulsified Water	scalar	Visual*	>0.2	▲ .5%	NEG
Free Water	scalar	Visual*		▲ 1%	▲ >10%

FLUID PROPERTIES	method	limit/base	current	history1	history2
Visc @ 40°C	cSt	ASTM D7279(m)	220	233	228

SAMPLE IMAGES	method	limit/base	current	history1	history2
---------------	--------	------------	---------	----------	----------



GRAPHS



Laboratory : WearCheck - C8-1175 Appleby Line, Burlington, ON L7L 5H9
Sample No. : WC0952484
Lab Number : 02647697
Unique Number : 5813249
Test Package : IND 2 (Additional Tests: TAN Man)

Molson Coors Canada
 45620 Kerr Avenue, Fraser Valley Brewery
 Chilliwack, BC
 CA V2R 3Z7
 Contact: Justin Baird
 Justin.Baird@molsoncoors.com
 T: (604)664-1891
 F:

To discuss this sample report, contact Customer Service at 1-800-268-2131.
 Test denoted (*) outside scope of accreditation, (m) method modified, (e) tested at external lab.
 Validity of results and interpretation are based on the sample and information as supplied.