



COOLANT REPORT

Area
[20146]
 Machine Id
JOHN DEERE 350DLC JOHNDEERE350DLC
 Component
Coolant
 Fluid
HYBRID (HOAT) COOLANT (--- GAL)

Sample Rating Trend



APPEARANCE



DIAGNOSIS

▲ Recommendation

We recommend drain system, and refill with 50/50 antifreeze water mixture. We advise that you replenish the supplemental coolant additives (SCAs) and add per manufacturer's specifications. Resample at the next service interval to monitor.

Corrosion

All metal levels are normal indicating no corrosion in the cooling system.

▲ Contaminants

There is no indication of any contamination in the component(unconfirmed).

Coolant Condition

The coolant is cloudy indicating either an overconcentration of coolant additives, or a mixing of incompatible coolant technologies. The nitrite level is acceptable. The pH level of this fluid is within the acceptable limits. The reserve alkalinity of this fluid is acceptable.

SAMPLE INFORMATION

	method	limit/base	current	history1	history2
Sample Number	Client Info		WC0763272	---	---
Sample Date	Client Info		11 Jul 2024	---	---
Machine Age	hrs	Client Info	0	---	---
Oil Age	hrs	Client Info	0	---	---
Oil Changed	Client Info		N/A	---	---
Sample Status			ABNORMAL	---	---

PHYSICAL TEST RESULTS

	method	limit/base	current	history1	history2
Glycol Type	FT-IR		UNK	---	---
Specific Gravity	ASTM D1298*		1.063	---	---
pH	Scale 0-14	ASTM D1287*	7.96	---	---
Nitrites	ppm	Alcan Test Kit*	720	---	---
Reserve Alkalinity	Scale 0-20	ASTM D1121*	5.2	---	---
Percentage Glycol	%	ASTM D3321*	46.8	---	---
Freezing Point	°C	ASTM D3321*	-32	---	---
Carboxylate			---	---	---

CORROSION INHIBITORS

	method	limit/base	current	history1	history2
Silicon	ppm	ASTM D5185(m)	83	---	---
Phosphorus	ppm	ASTM D5185(m)	202	---	---
Boron	ppm	ASTM D5185(m)	436	---	---
Molybdenum	ppm	ASTM D5185(m)	57	---	---

CORROSION

	method	limit/base	current	history1	history2
Iron	ppm	ASTM D5185(m)	>15	<1	---
Aluminum	ppm	ASTM D5185(m)	>10	<1	---
Copper	ppm	ASTM D5185(m)	>10	0	---
Lead	ppm	ASTM D5185(m)	>10	0	---
Tin	ppm	ASTM D5185(m)	>10	0	---
Silver	ppm	ASTM D5185(m)	>10	0	---
Zinc	ppm	ASTM D5185(m)		4	---

CARRIER SALTS

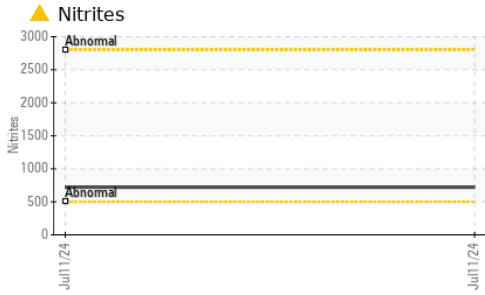
	method	limit/base	current	history1	history2
Sodium	ppm	ASTM D5185(m)		3162	---
Potassium	ppm	ASTM D5185(m)		567	---



SCALE POTENTIAL

	method	limit/base	current	history1	history2
Calcium	ppm	ASTM D5185(m)	>100	3	---
Magnesium	ppm	ASTM D5185(m)	>40	2	---
Hardness	mg/L CaCO3	In-house*	<75	17	---

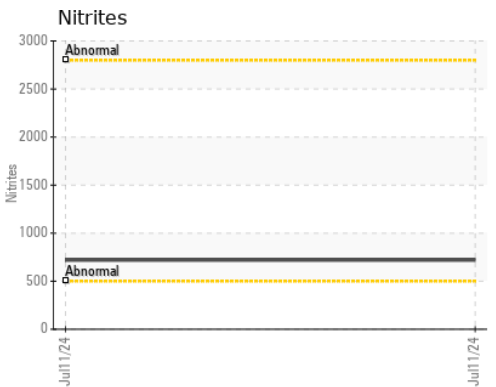
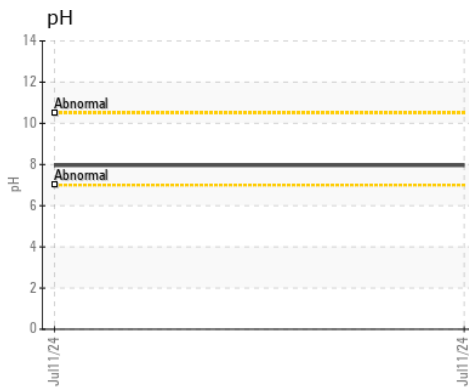
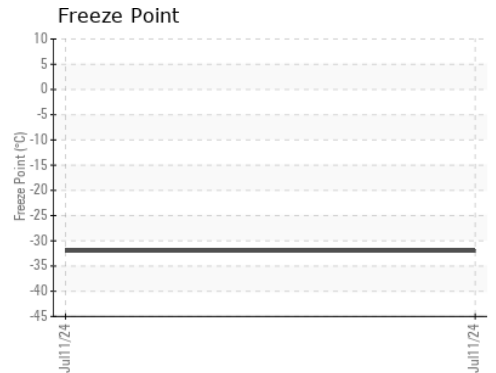
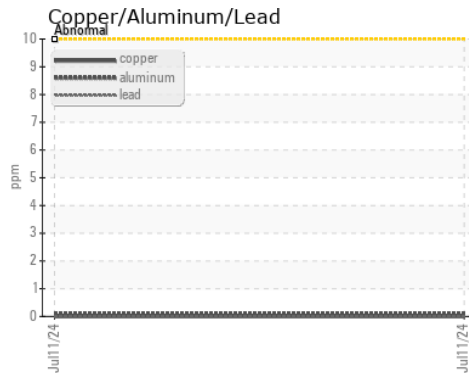
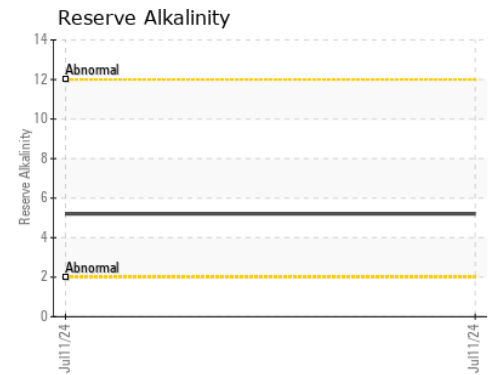
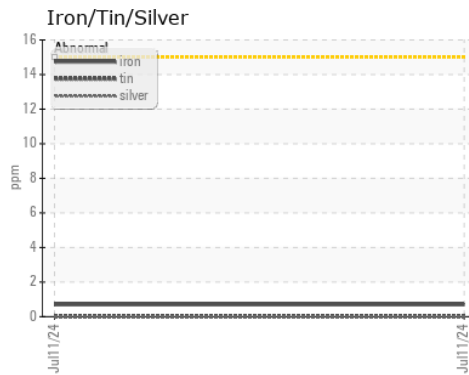


COOLANT REPORT



VISUAL	method	limit/base	current	history1	history2
Coolant Color	Visual*		Yellow	---	---
Coolant Appearance	Visual*	Clear	Cloudy	---	---
Color				no image	no image
Bottom				no image	no image

GRAPHS



Laboratory : WearCheck - C8-1175 Appleby Line, Burlington, ON L7L 5H9
Sample No. : WC0763272
Lab Number : 02647707
Unique Number : 5813259
Test Package : COOL (Additional Tests: GlycolType)
Received : 12 Jul 2024
Tested : 12 Jul 2024
Diagnosed : 15 Jul 2024 - Kevin Marson

GF PRESTON SALES AND SERVICE
 PO BOX 540,, 289 ALBERT STREET
 SUNDRIDGE, ON
 CA P0A 1Z0
 Contact: Chad Preston
 chad@gfpreston.com
 T:
 F: (705)384-7461

To discuss this sample report, contact Customer Service at 1-800-268-2131.
 Test denoted (*) outside scope of accreditation, (m) method modified, (e) tested at external lab.
 Validity of results and interpretation are based on the sample and information as supplied.