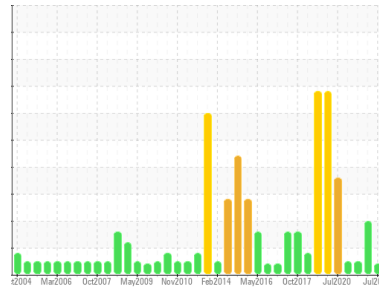




# OIL ANALYSIS REPORT

Sample Rating Trend



## VISCOSITY



Area

### 6801 - TRANSFERT

Machine Id

### 68100101B03 - PONT ROULANT TRANSFERT (Translation EST)

Component

### Reduction Gear

Fluid

### MOBIL MOBILGEAR 600 XP 220 (15 LTR)

#### DIAGNOSIS

##### Recommendation

Échantillonner de nouveau l'équipement au prochain intervalle de vidange afin d'en surveiller la condition.

##### Wear

Les taux d'usure de tous les composants sont normaux.

##### Contamination

Il n'y a aucun indice de contamination dans l'huile.

##### Fluid Condition

La viscosité de l'échantillon se situe dans la portée de l'ISO 320; nous vous conseillons de vérifier. L'état de l'huile est acceptable pour la durée de service.

#### SAMPLE INFORMATION

	method	limit/base	current	history1	history2
Sample Number	Client Info		<b>WC0910693</b>	WC0793855	WC0747544
Sample Date	Client Info		<b>10 Jul 2024</b>	13 Nov 2023	09 Mar 2023
Machine Age	hrs	Client Info	<b>0</b>	0	0
Oil Age	hrs	Client Info	<b>0</b>	0	0
Oil Changed	Client Info		<b>N/A</b>	N/A	N/A
Sample Status			<b>ABNORMAL</b>	ABNORMAL	NORMAL

#### CONTAMINATION

	method	limit/base	current	history1	history2
Water	WC Method	>0.1	<b>NEG</b>	NEG	NEG

#### WEAR METALS

	method	limit/base	current	history1	history2	
Iron	ppm	ASTM D5185(m)	>150	<b>115</b>	60	84
Chromium	ppm	ASTM D5185(m)	>10	<b>1</b>	<1	<1
Nickel	ppm	ASTM D5185(m)	>10	<b>1</b>	2	<1
Titanium	ppm	ASTM D5185(m)		<b>&lt;1</b>	0	<1
Silver	ppm	ASTM D5185(m)		<b>0</b>	<1	0
Aluminum	ppm	ASTM D5185(m)	>25	<b>5</b>	5	9
Lead	ppm	ASTM D5185(m)	>100	<b>0</b>	1	1
Copper	ppm	ASTM D5185(m)	>50	<b>&lt;1</b>	2	<1
Tin	ppm	ASTM D5185(m)	>10	<b>0</b>	0	0
Antimony	ppm	ASTM D5185(m)	>5	<b>0</b>	0	<1
Vanadium	ppm	ASTM D5185(m)		<b>0</b>	0	0
Beryllium	ppm	ASTM D5185(m)		<b>0</b>	0	0
Cadmium	ppm	ASTM D5185(m)		<b>0</b>	0	0

#### ADDITIVES

	method	limit/base	current	history1	history2	
Boron	ppm	ASTM D5185(m)		<b>21</b>	23	16
Barium	ppm	ASTM D5185(m)		<b>&lt;1</b>	5	0
Molybdenum	ppm	ASTM D5185(m)		<b>0</b>	2	0
Manganese	ppm	ASTM D5185(m)		<b>&lt;1</b>	<1	<1
Magnesium	ppm	ASTM D5185(m)		<b>&lt;1</b>	<1	<1
Calcium	ppm	ASTM D5185(m)		<b>3</b>	10	13
Phosphorus	ppm	ASTM D5185(m)		<b>310</b>	346	322
Zinc	ppm	ASTM D5185(m)		<b>17</b>	46	2
Sulfur	ppm	ASTM D5185(m)		<b>13820</b>	14702	9588
Lithium	ppm	ASTM D5185(m)		<b>2</b>	▲ 45	<1

#### CONTAMINANTS

	method	limit/base	current	history1	history2	
Silicon	ppm	ASTM D5185(m)	>50	<b>25</b>	▲ 63	14
Sodium	ppm	ASTM D5185(m)		<b>3</b>	6	7
Potassium	ppm	ASTM D5185(m)	>20	<b>&lt;1</b>	1	1

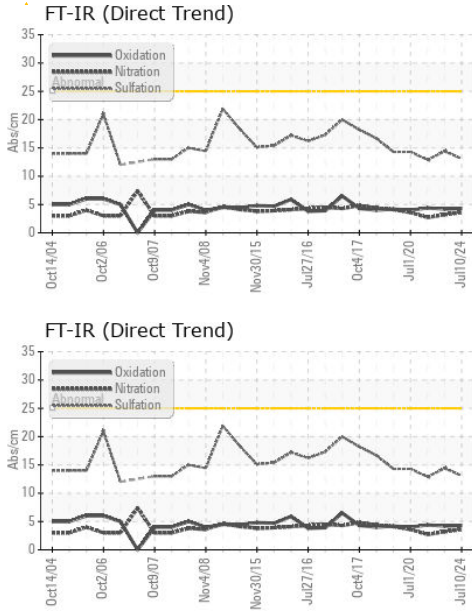
#### INFRA-RED

	method	limit/base	current	history1	history2	
Soot %	%	ASTM D7844*		<b>0</b>	---	0
Nitration	Abs/cm	ASTM D7624*		<b>3.6</b>	---	3.2
Sulfation	Abs./1mm	ASTM D7415*		<b>13.1</b>	---	14.4

#### FLUID DEGRADATION

	method	limit/base	current	history1	history2	
Oxidation	Abs./1mm	ASTM D7414*		<b>4.3</b>	---	4.2

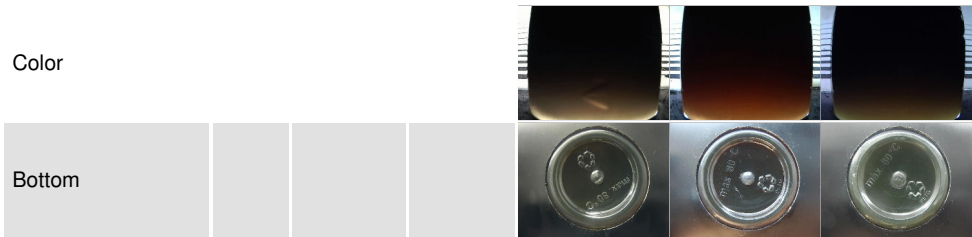
# OIL ANALYSIS REPORT



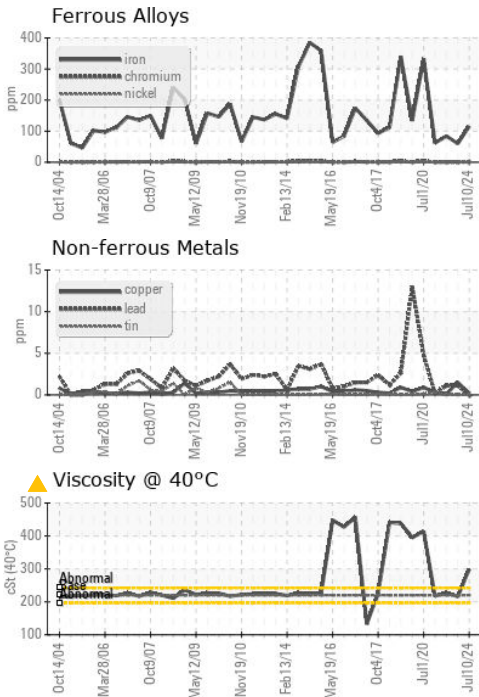
VISUAL	method	limit/base	current	history1	history2
White Metal	scalar	Visual*	NONE	<b>LIGHT</b>	NONE
Yellow Metal	scalar	Visual*	NONE	<b>NONE</b>	NONE
Precipitate	scalar	Visual*	NONE	<b>NONE</b>	NONE
Silt	scalar	Visual*	NONE	<b>NONE</b>	NONE
Debris	scalar	Visual*	NONE	<b>NONE</b>	NONE
Sand/Dirt	scalar	Visual*	NONE	<b>NONE</b>	NONE
Appearance	scalar	Visual*	NORML	<b>NORML</b>	NORML
Odor	scalar	Visual*	NORML	<b>NORML</b>	NORML
Emulsified Water	scalar	Visual*	>0.1	<b>NEG</b>	NEG
Free Water	scalar	Visual*		<b>NEG</b>	NEG

FLUID PROPERTIES	method	limit/base	current	history1	history2
Visc @ 40°C	cSt	ASTM D7279(m)	220 ▲ <b>299</b>	216	227

SAMPLE IMAGES	method	limit/base	current	history1	history2
---------------	--------	------------	---------	----------	----------



## GRAPHS



**Laboratory** : WearCheck - C8-1175 Appleby Line, Burlington, ON L7L 5H9  
**Sample No.** : WC0910693  
**Lab Number** : 02647890  
**Unique Number** : 5813442  
**Test Package** : IND 1 ( Additional Tests: FT-IR )

**Rio Tinto Alcan (SECAL) USINE LATERRIERE**  
 6301 BOUL. TALBOT  
 LATERRIERE, QC  
 CA G0V 1K0  
 Contact: Sylvain Payer  
 sylvain.payer@riotinto.com  
 T: (418)818-9426  
 F: (418)678-1876

To discuss this sample report, contact Customer Service at 1-800-268-2131.  
 Test denoted (\*) outside scope of accreditation, (m) method modified, (e) tested at external lab.  
 Validity of results and interpretation are based on the sample and information as supplied.