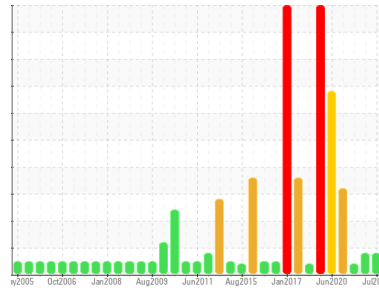




OIL ANALYSIS REPORT

Sample Rating Trend



WEAR



Area

6801 - TRANSFERT

Machine Id

68100101B04 - PONT ROULANT TRANSFERT (Translation OUEST)

Component

Reduction Gear

Fluid

MOBIL MOBILGEAR 600 XP 220 (15 LTR)

DIAGNOSIS

Recommendation

Nous vous recommandons de vidanger l'huile de ce composant si vous ne l'avez pas déjà fait. Nous vous recommandons d'échantillonner de nouveau dès que possible afin de contrôler la situation.

Wear

Usure des engrenages.

Contamination

Il n'y a aucun indice de contamination dans l'huile.

Fluid Condition

l'huile n'est plus en état de service en raison d'une usure anormale et/ou sévère.

SAMPLE INFORMATION

	method	limit/base	current	history1	history2
Sample Number	Client Info		WC0932394	WC0793858	WC0747545
Sample Date	Client Info		10 Jul 2024	13 Nov 2023	09 Mar 2023
Machine Age	hrs	Client Info	0	0	0
Oil Age	hrs	Client Info	0	0	0
Oil Changed	Client Info		N/A	N/A	N/A
Sample Status			ABNORMAL	ABNORMAL	ABNORMAL

CONTAMINATION

	method	limit/base	current	history1	history2
Water	WC Method	>0.1	NEG	NEG	NEG

WEAR METALS

	method	limit/base	current	history1	history2
PQ	ASTM D8184*		260	138	---
Iron	ppm	ASTM D5185(m) >150	▲ 312	▲ 207	20
Chromium	ppm	ASTM D5185(m) >10	3	2	0
Nickel	ppm	ASTM D5185(m) >10	2	1	<1
Titanium	ppm	ASTM D5185(m)	<1	0	0
Silver	ppm	ASTM D5185(m)	0	<1	0
Aluminum	ppm	ASTM D5185(m) >25	24	20	1
Lead	ppm	ASTM D5185(m) >100	1	2	<1
Copper	ppm	ASTM D5185(m) >50	<1	<1	0
Tin	ppm	ASTM D5185(m) >10	3	0	0
Antimony	ppm	ASTM D5185(m) >5	<1	0	<1
Vanadium	ppm	ASTM D5185(m)	0	0	0
Beryllium	ppm	ASTM D5185(m)	0	0	0
Cadmium	ppm	ASTM D5185(m)	0	0	0

ADDITIVES

	method	limit/base	current	history1	history2
Boron	ppm	ASTM D5185(m)	10	13	31
Barium	ppm	ASTM D5185(m)	<1	<1	0
Molybdenum	ppm	ASTM D5185(m)	0	0	0
Manganese	ppm	ASTM D5185(m)	2	<1	<1
Magnesium	ppm	ASTM D5185(m)	1	<1	<1
Calcium	ppm	ASTM D5185(m)	16	16	<1
Phosphorus	ppm	ASTM D5185(m)	290	293	343
Zinc	ppm	ASTM D5185(m)	4	4	4
Sulfur	ppm	ASTM D5185(m)	9445	9883	14068
Lithium	ppm	ASTM D5185(m)	1	1	2

CONTAMINANTS

	method	limit/base	current	history1	history2
Silicon	ppm	ASTM D5185(m) >50	25	23	11
Sodium	ppm	ASTM D5185(m)	16	14	<1
Potassium	ppm	ASTM D5185(m) >20	3	2	<1

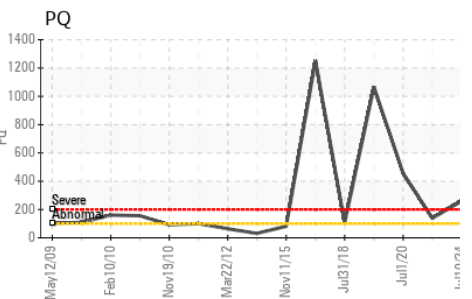
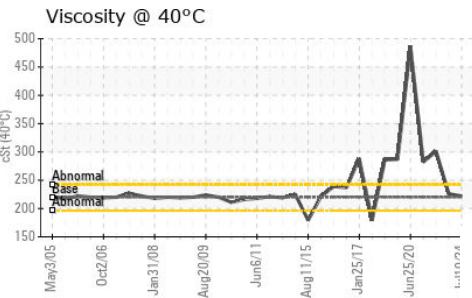
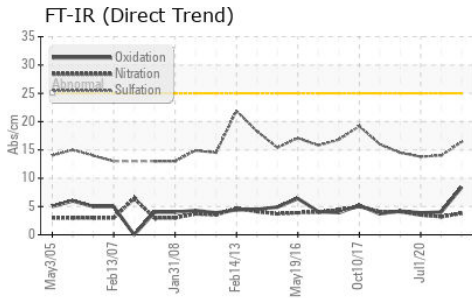
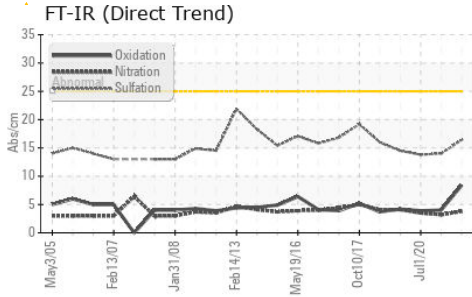
INFRA-RED

	method	limit/base	current	history1	history2
Soot %	%	ASTM D7844*	0	---	0
Nitration	Abs/cm	ASTM D7624*	3.8	---	3.2
Sulfation	Abs./1mm	ASTM D7415*	16.4	---	14.0

FLUID DEGRADATION

	method	limit/base	current	history1	history2
Oxidation	Abs./1mm	ASTM D7414*	8.4	---	4.0

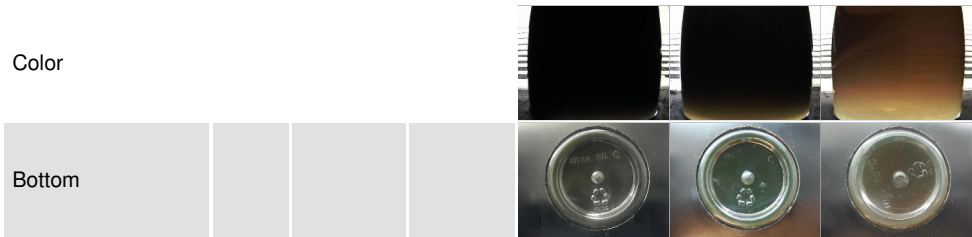
OIL ANALYSIS REPORT



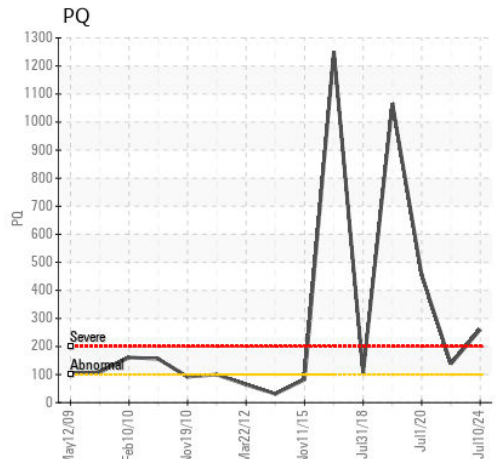
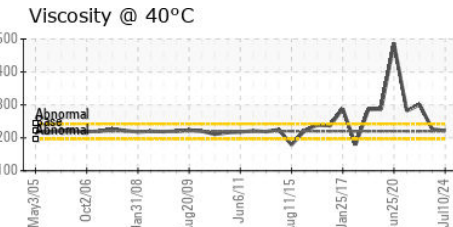
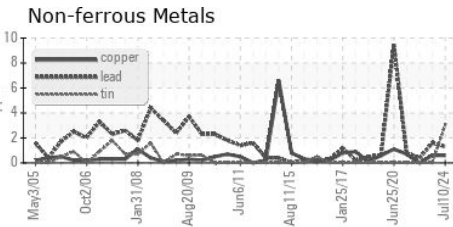
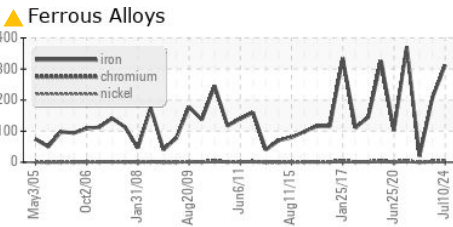
VISUAL	method	limit/base	current	history1	history2
White Metal	scalar	Visual*	NONE	LIGHT	NONE
Yellow Metal	scalar	Visual*	NONE	NONE	NONE
Precipitate	scalar	Visual*	NONE	NONE	NONE
Silt	scalar	Visual*	NONE	VLITE	NONE
Debris	scalar	Visual*	NONE	NONE	NONE
Sand/Dirt	scalar	Visual*	NONE	NONE	NONE
Appearance	scalar	Visual*	NORML	NORML	NORML
Odor	scalar	Visual*	NORML	NORML	NORML
Emulsified Water	scalar	Visual*	>0.1	NEG	NEG
Free Water	scalar	Visual*		NEG	NEG

FLUID PROPERTIES	method	limit/base	current	history1	history2
Visc @ 40°C	cSt	ASTM D7279(m)	220	222	226 ▲ 301

SAMPLE IMAGES



GRAPHS



Laboratory : WearCheck - C8-1175 Appleby Line, Burlington, ON L7L 5H9 **Rio Tinto Alcan (SECAL) USINE LATERRIERE**
Sample No. : WC0932394 **Received** : 15 Jul 2024 **6301 BOUL. TALBOT**
Lab Number : **02647892** **Tested** : 16 Jul 2024 **LATERRIERE, QC**
Unique Number : 5813444 **Diagnosed** : 16 Jul 2024 - Kevin Marson **CA G0V 1K0**
Test Package : IND 1 (Additional Tests: Bottom, FT-IR, PQ) **Contact: Sylvain Payer**
To discuss this sample report, contact Customer Service at 1-800-268-2131. **sylvain.payer@riotinto.com**
Test denoted (*) outside scope of accreditation, (m) method modified, (e) tested at external lab. **T: (418)818-9426**
Validity of results and interpretation are based on the sample and information as supplied. **F: (418)678-1876**