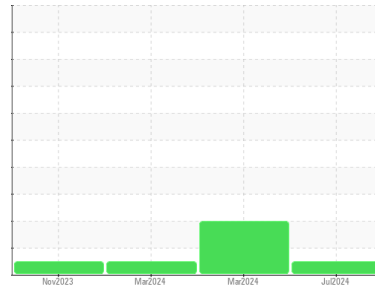




# OIL ANALYSIS REPORT

Sample Rating Trend



**NORMAL**



Machine Id  
**PPSM**  
 Component  
**Gear Reducer**  
 Fluid  
**GEAR OIL ISO 680 (--- GAL)**

## DIAGNOSIS

### Recommendation

Resample at the next service interval to monitor. Please specify the component make and model with your next sample.

### Wear

All component wear rates are normal.

### Contamination

There is no indication of any contamination in the oil.

### Fluid Condition

The condition of the oil is acceptable for the time in service.

SAMPLE INFORMATION		method	limit/base	current	history1	history2
Sample Number	Client Info			<b>WC0848644</b>	WC0752069	WC0752063
Sample Date	Client Info			<b>08 Jul 2024</b>	26 Mar 2024	18 Mar 2024
Machine Age	hrs	Client Info		<b>0</b>	0	0
Oil Age	hrs	Client Info		<b>0</b>	0	0
Oil Changed	Client Info			<b>Not Changed</b>	N/A	N/A
Sample Status				<b>NORMAL</b>	ABNORMAL	NORMAL

CONTAMINATION		method	limit/base	current	history1	history2
Water	WC Method		>0.2	<b>NEG</b>	NEG	NEG

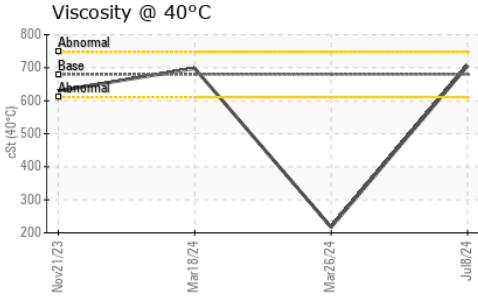
WEAR METALS		method	limit/base	current	history1	history2
Iron	ppm	ASTM D5185(m)	>250	<b>6</b>	124	9
Chromium	ppm	ASTM D5185(m)	>5	<b>0</b>	1	0
Nickel	ppm	ASTM D5185(m)	>5	<b>1</b>	<1	<1
Titanium	ppm	ASTM D5185(m)		<b>0</b>	0	0
Silver	ppm	ASTM D5185(m)		<b>0</b>	0	0
Aluminum	ppm	ASTM D5185(m)	>20	<b>&lt;1</b>	<1	0
Lead	ppm	ASTM D5185(m)	>50	<b>4</b>	0	3
Copper	ppm	ASTM D5185(m)	>50	<b>5</b>	<1	2
Tin	ppm	ASTM D5185(m)	>5	<b>0</b>	0	0
Antimony	ppm	ASTM D5185(m)	>5	<b>0</b>	0	0
Vanadium	ppm	ASTM D5185(m)		<b>0</b>	0	0
Beryllium	ppm	ASTM D5185(m)		<b>0</b>	0	0
Cadmium	ppm	ASTM D5185(m)		<b>0</b>	0	0

ADDITIVES		method	limit/base	current	history1	history2
Boron	ppm	ASTM D5185(m)	50	<b>&lt;1</b>	13	2
Barium	ppm	ASTM D5185(m)	15	<b>0</b>	<1	0
Molybdenum	ppm	ASTM D5185(m)	15	<b>0</b>	0	0
Manganese	ppm	ASTM D5185(m)		<b>0</b>	0	0
Magnesium	ppm	ASTM D5185(m)	50	<b>0</b>	<1	0
Calcium	ppm	ASTM D5185(m)	50	<b>6</b>	19	<1
Phosphorus	ppm	ASTM D5185(m)	350	<b>235</b>	321	217
Zinc	ppm	ASTM D5185(m)	100	<b>4</b>	5	3
Sulfur	ppm	ASTM D5185(m)	12500	<b>10989</b>	5931	13633
Lithium	ppm	ASTM D5185(m)		<b>&lt;1</b>	6	<1

CONTAMINANTS		method	limit/base	current	history1	history2
Silicon	ppm	ASTM D5185(m)	>60	<b>5</b>	<1	0
Sodium	ppm	ASTM D5185(m)		<b>&lt;1</b>	1	<1
Potassium	ppm	ASTM D5185(m)	>20	<b>0</b>	<1	<1



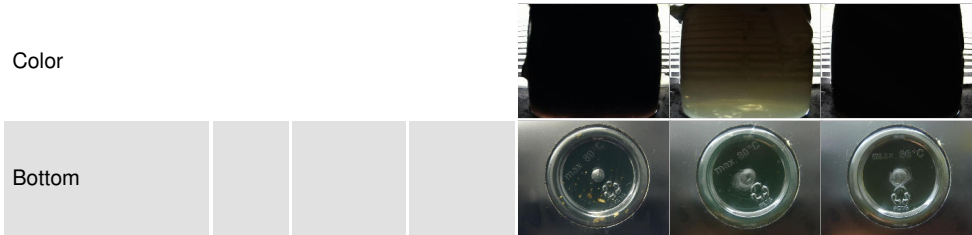
# OIL ANALYSIS REPORT



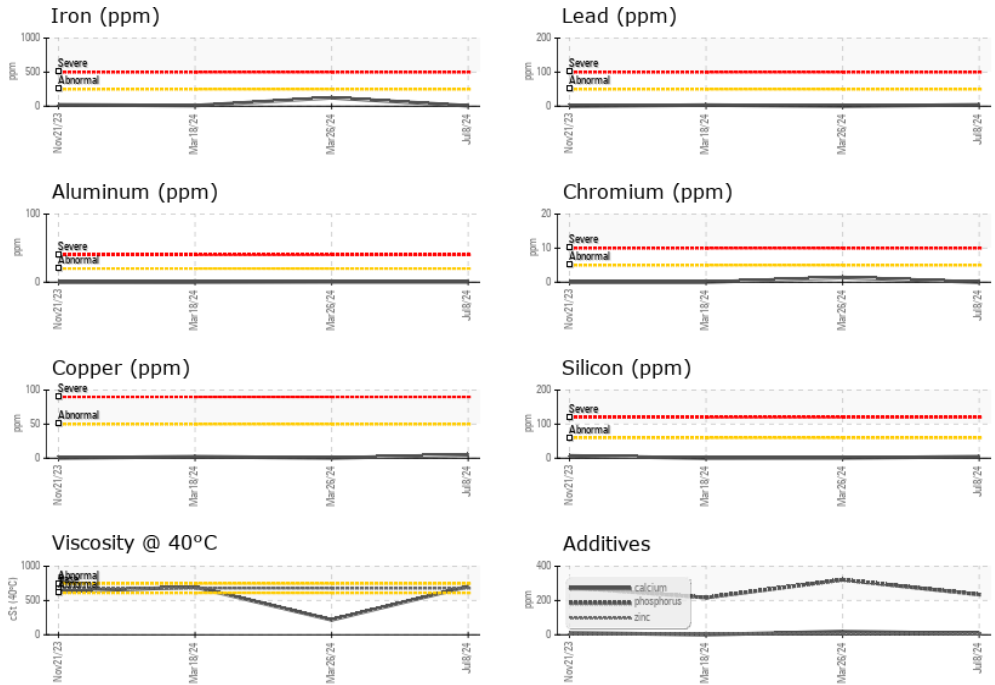
VISUAL	method	limit/base	current	history1	history2
White Metal	scalar	Visual*	NONE	VLITE	NONE
Yellow Metal	scalar	Visual*	NONE	NONE	NONE
Precipitate	scalar	Visual*	NONE	NONE	NONE
Silt	scalar	Visual*	NONE	NONE	NONE
Debris	scalar	Visual*	NONE	LIGHT	VLITE
Sand/Dirt	scalar	Visual*	NONE	NONE	VLITE
Appearance	scalar	Visual*	NORML	NORML	NORML
Odor	scalar	Visual*	NORML	NORML	NORML
Emulsified Water	scalar	Visual*	>0.2	NEG	NEG
Free Water	scalar	Visual*		NEG	NEG

FLUID PROPERTIES	method	limit/base	current	history1	history2	
Visc @ 40°C	cSt	ASTM D7279(m)	680	706	▲ 217	698

SAMPLE IMAGES	method	limit/base	current	history1	history2
---------------	--------	------------	---------	----------	----------



## GRAPHS



**Laboratory** : WearCheck - C8-1175 Appleby Line, Burlington, ON L7L 5H9  
**Sample No.** : WC0848644  
**Lab Number** : 02647911  
**Unique Number** : 5813463  
**Test Package** : MOB 1

**Vale - Copper Cliff Smelter**  
 COPPER CLIFF SMELTER WAREHOUSE, 155 BALSAM ST.  
 COPPER CLIFF, ON  
 CA P0M 1N0

Received : 15 Jul 2024  
 Tested : 15 Jul 2024  
 Diagnosed : 15 Jul 2024 - Wes Davis

To discuss this sample report, contact Customer Service at 1-800-268-2131.  
 Test denoted (\*) outside scope of accreditation, (m) method modified, (e) tested at external lab.  
 Validity of results and interpretation are based on the sample and information as supplied.

Contact: Jacynthe Gelinass  
 jacynthe.gelinass@vale.com  
 T: (705)682-5980  
 F: (705)682-6535