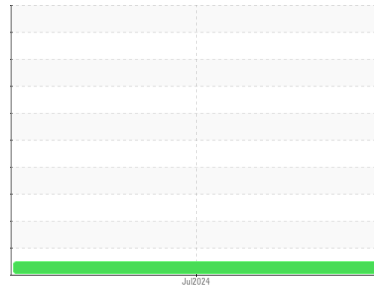




GREASE ANALYSIS

Sample Rating Trend



NORMAL



Machine Id
170640
 Component
0° Grease
 Fluid
MOBIL MOBILGREASE XHP 222 (--- GAL)

DIAGNOSIS

Recommendation

Resample at the next service interval to monitor.

Wear

All component wear rates are normal.

Grease Condition

The condition of the grease is acceptable for the time in service.

Contaminants

There is no indication of any contamination in the grease.

SAMPLE INFORMATION

	method	limit/base	current	history1	history2
Sample Number	Client Info		PP	---	---
Sample Date	Client Info		14 Jul 2024	---	---
Machine Age	hrs	Client Info	0	---	---
Grease Age	hrs	Client Info	0	---	---
Grease Serviced	Client Info		N/A	---	---
Sample Status			NORMAL	---	---

CONTAMINATION

	method	limit/base	current	history1	history2
Water	WC Method	>0.1	NEG	---	---

WEAR METALS

	method	limit/base	current	history1	history2
PQ	ASTM D8184*	>200	630	---	---
Iron	ppm	ASTM D5185(m)	>250	43	---
Chromium	ppm	ASTM D5185(m)	>10	<1	---
Nickel	ppm	ASTM D5185(m)	>5	<1	---
Cadmium	ppm	ASTM D5185(m)		0	---
Titanium	ppm	ASTM D5185(m)		0	---
Vanadium	ppm	ASTM D5185(m)		0	---
Lead	ppm	ASTM D5185(m)	>25	0	---
Copper	ppm	ASTM D5185(m)	>75	<1	---
Tin	ppm	ASTM D5185(m)	>5	0	---
Silver	ppm	ASTM D5185(m)	>5	0	---

ADDITIVES

	method	limit/base	current	history1	history2
Boron	ppm	ASTM D5185(m)		7	---
Magnesium	ppm	ASTM D5185(m)		<1	---
Manganese	ppm	ASTM D5185(m)		<1	---
Molybdenum	ppm	ASTM D5185(m)		18	---
Phosphorus	ppm	ASTM D5185(m)		138	---
Zinc	ppm	ASTM D5185(m)		206	---
Antimony	ppm	ASTM D5185(m)		11	---

THICKENER/SOAP

	method	limit/base	current	history1	history2
Aluminum	ppm	ASTM D5185(m)		<1	---
Barium	ppm	ASTM D5185(m)		<1	---
Calcium	ppm	ASTM D5185(m)		12	---
Sodium	ppm	ASTM D5185(m)		8	---
Lithium	ppm	ASTM D5185(m)		223	---
Sulfur	ppm	ASTM D5185(m)		875	---

CONTAMINANTS

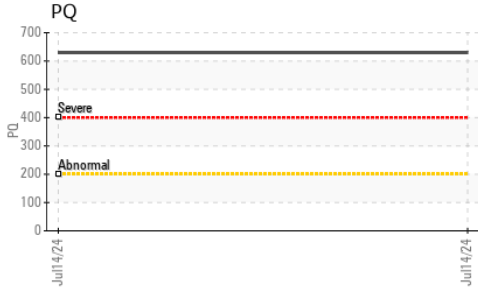
	method	limit/base	current	history1	history2
Silicon	ppm	ASTM D5185(m)	>150	<1	---
Potassium	ppm	ASTM D5185(m)		<1	---

GREASE CONDITION

	method	limit/base	current	history1	history2
Grease Color	Visual*	Dk Blue	Green	---	---
Texture	In-house*		Buttery	---	---
NLGI Consistency	NLGI Scale	SKF Method* 2	2	---	---

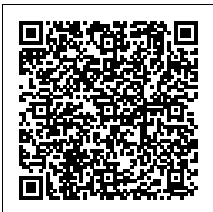
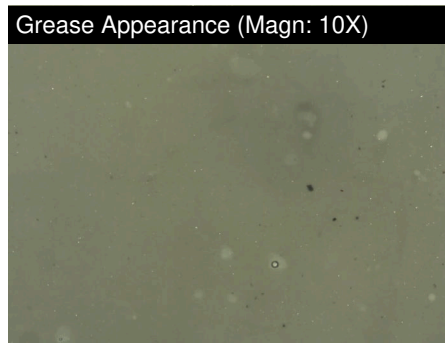
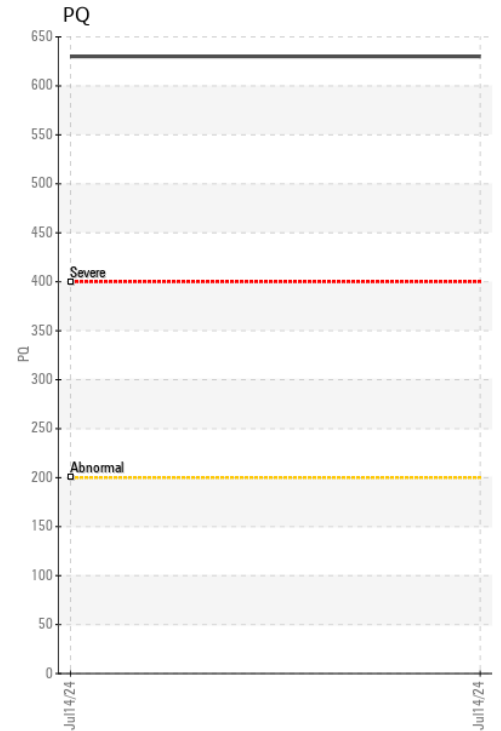
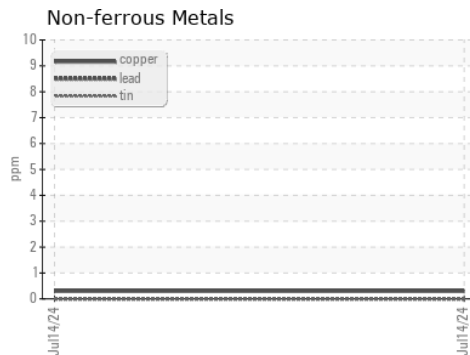
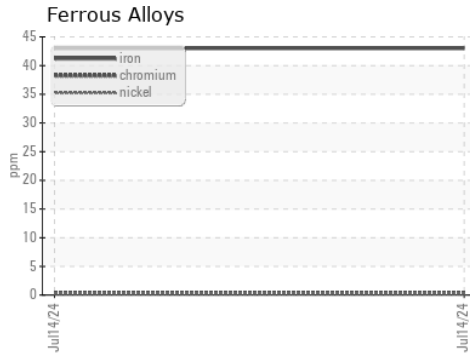


GREASE ANALYSIS



SAMPLE IMAGES	method	limit/base	current	history1	history2
Color				no image	no image
Bottom				no image	no image
PrtFilter				no image	no image

GRAPHS



Laboratory : WearCheck - C8-1175 Appleby Line, Burlington, ON L7L 5H9
Sample No. : PP **Received** : 15 Jul 2024
Lab Number : 02647974 **Tested** : 18 Jul 2024
Unique Number : 5813526 **Diagnosed** : 18 Jul 2024 - Bill Quesnel
Test Package : GRS 1 (Additional Tests: BottomAnalysis)

ExxonMobil Canada East Ltd.
 Hebron-Materials and Repair Coordin, Suite 1000, 100 New Gow
 St. John`s, NL
 CA A1C 6K3
 Contact: Liam Maher
 liam.m.maher@exxonmobil.com
 T: (709)273-3729
 F:

To discuss this sample report, contact Customer Service at 1-800-268-2131.
 Test denoted (*) outside scope of accreditation, (m) method modified, (e) tested at external lab.
 Validity of results and interpretation are based on the sample and information as supplied.