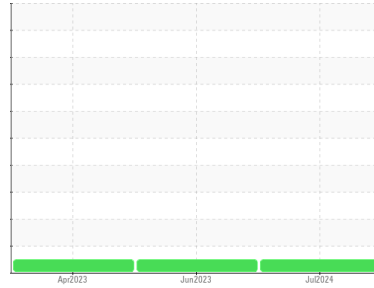




OIL ANALYSIS REPORT

Sample Rating Trend



NORMAL



Machine Id
KUBOTA X1140 MCP750

Component
Diesel Engine

Fluid
PETRO CANADA DURON SAE 15W40 (--- GAL)

DIAGNOSIS

Recommendation

Resample at the next service interval to monitor.

Wear

Metal levels are typical for a new component breaking in.

Contamination

There is no indication of any contamination in the oil.

Fluid Condition

The condition of the oil is acceptable for the time in service.

SAMPLE INFORMATION		method	limit/base	current	history1	history2
Sample Number	Client Info			WC0930766	WC0798633	WC0650146
Sample Date	Client Info			14 Jul 2024	03 Jun 2023	17 Apr 2023
Machine Age	hrs	Client Info		250	300	248
Oil Age	hrs	Client Info		250	0	0
Oil Changed	Client Info			Changed	N/A	Changed
Sample Status				NORMAL	NORMAL	NORMAL

CONTAMINATION		method	limit/base	current	history1	history2
Fuel	WC Method	>5		<1.0	<1.0	<1.0
Water	WC Method	>0.2		NEG	NEG	NEG
Glycol	WC Method			NEG	NEG	NEG

WEAR METALS		method	limit/base	current	history1	history2
Iron	ppm	ASTM D5185(m)	>100	72	19	53
Chromium	ppm	ASTM D5185(m)	>20	2	<1	2
Nickel	ppm	ASTM D5185(m)	>4	0	0	<1
Titanium	ppm	ASTM D5185(m)		<1	2	<1
Silver	ppm	ASTM D5185(m)	>3	0	0	0
Aluminum	ppm	ASTM D5185(m)	>20	8	4	9
Lead	ppm	ASTM D5185(m)	>40	<1	<1	1
Copper	ppm	ASTM D5185(m)	>330	40	7	36
Tin	ppm	ASTM D5185(m)	>15	0	<1	<1
Antimony	ppm	ASTM D5185(m)		0	<1	<1
Vanadium	ppm	ASTM D5185(m)		0	0	0
Beryllium	ppm	ASTM D5185(m)		0	0	0
Cadmium	ppm	ASTM D5185(m)		0	0	0

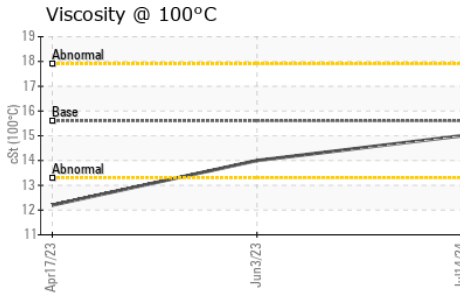
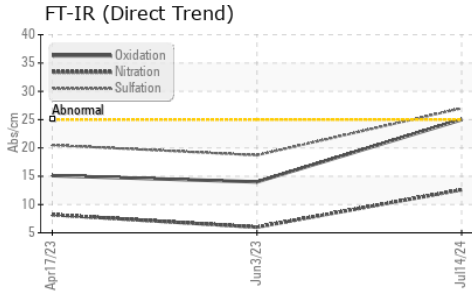
ADDITIVES		method	limit/base	current	history1	history2
Boron	ppm	ASTM D5185(m)	1	55	8	40
Barium	ppm	ASTM D5185(m)	1	<1	<1	6
Molybdenum	ppm	ASTM D5185(m)	60	118	58	59
Manganese	ppm	ASTM D5185(m)	1	1	<1	3
Magnesium	ppm	ASTM D5185(m)	1010	739	864	473
Calcium	ppm	ASTM D5185(m)	1070	1827	1248	2109
Phosphorus	ppm	ASTM D5185(m)	1150	945	1080	1126
Zinc	ppm	ASTM D5185(m)	1270	1132	1174	1255
Sulfur	ppm	ASTM D5185(m)	2060	2275	2674	3004
Lithium	ppm	ASTM D5185(m)		<1	<1	<1

CONTAMINANTS		method	limit/base	current	history1	history2
Silicon	ppm	ASTM D5185(m)	>25	22	9	25
Sodium	ppm	ASTM D5185(m)		6	2	3
Potassium	ppm	ASTM D5185(m)	>20	3	0	1

INFRA-RED		method	limit/base	current	history1	history2
Soot %	%	ASTM D7844*	>3	1	0.1	0.3
Nitration	Abs/cm	ASTM D7624*	>20	12.6	6.0	8.2
Sulfation	Abs/.1mm	ASTM D7415*	>30	27.0	18.7	20.5



OIL ANALYSIS REPORT



FLUID DEGRADATION

method	limit/base	current	history1	history2	
Oxidation	Abs./1mm ASTM D7414*	>25	25.0	14.0	15.1

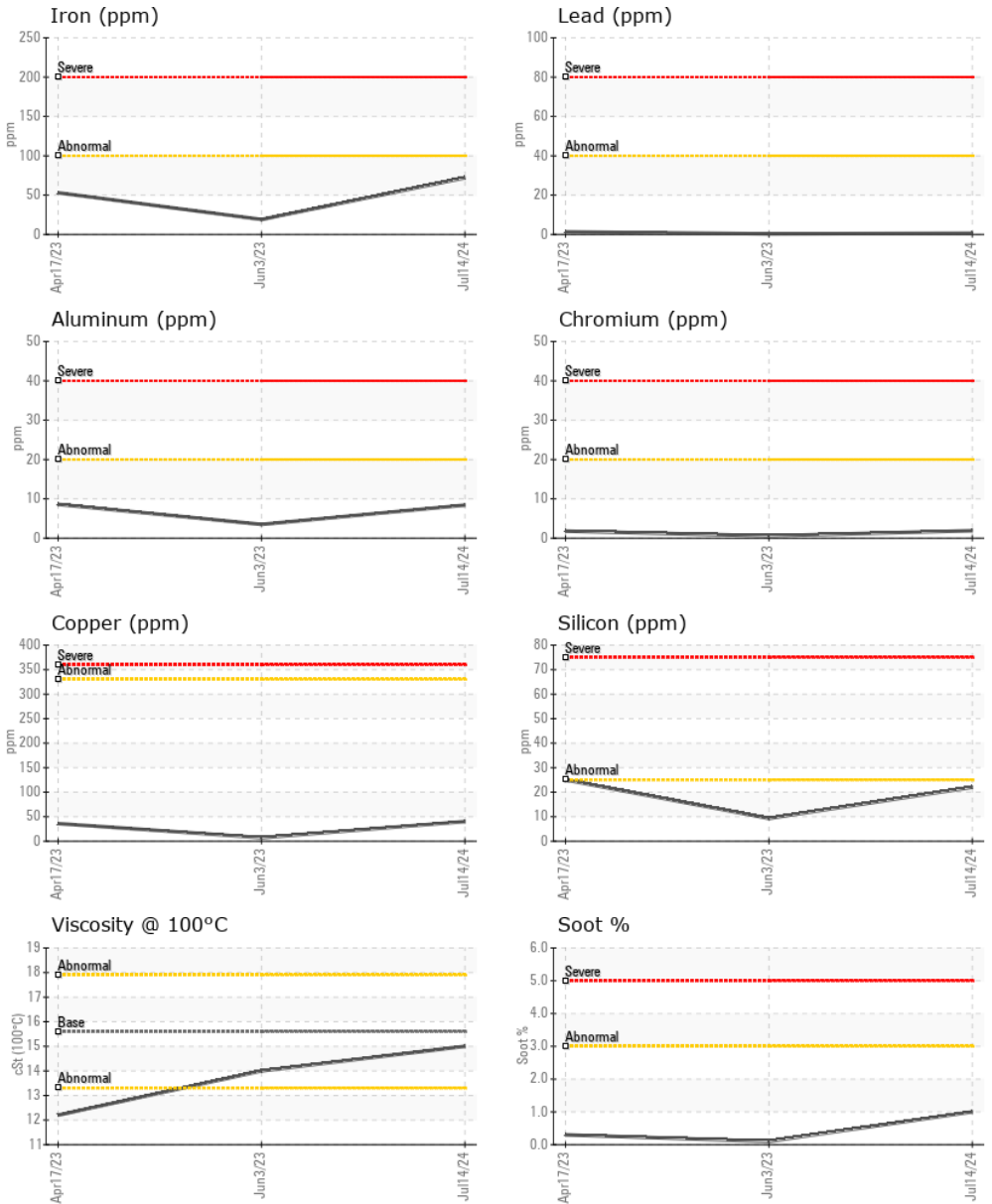
VISUAL

method	limit/base	current	history1	history2	
Emulsified Water	scalar Visual*	>0.2	NEG	NEG	NEG
Free Water	scalar Visual*		NEG	NEG	NEG

FLUID PROPERTIES

method	limit/base	current	history1	history2	
Visc @ 100°C	cSt ASTM D7279(m)	15.6	15.0	14.0	12.2

GRAPHS



Laboratory : WearCheck - C8-1175 Appleby Line, Burlington, ON L7L 5H9
Sample No. : WC0930766
Lab Number : 02648014
Unique Number : 5813566
Test Package : MOB 1

Agnico Eagle Canada
 1350 Government Rd. W, MACASSA COMPLEX
 Kirkland Lake, ON
 CA P2N 3J1
 Contact: Phil St-Denis
 Phil.St-Denis@agnicoeagle.com
 T: (705)567-5208
 F: (705)567-5221

To discuss this sample report, contact Customer Service at 1-800-268-2131.
 Test denoted (*) outside scope of accreditation, (m) method modified, (e) tested at external lab.
 Validity of results and interpretation are based on the sample and information as supplied.