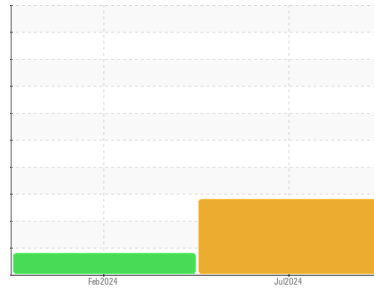




OIL ANALYSIS REPORT

Sample Rating Trend



WATER



Machine Id
KHS L3 INFEED

Component

Gearbox

Fluid

KLUBER KLUBEROIL 4 UH1-460 N (--- GAL)

DIAGNOSIS

▲ Recommendation

We advise that you check for the source of water entry. Check seals and/or filters for points of contaminant entry. The air breather requires service. If unrated, we recommend that you replace with a suitable micron rated and/or desiccant air breather. If rated, we recommend that you service/replace the breather. We advise that you use off-line filtration with water adsorbent filters to attempt to remove the water from this oil. Confirm the source of the lubricant being utilized for top-up/fill. We recommend an early resample to monitor this condition. NOTE: Please provide information regarding reservoir capacity, filter type and micron rating with next sample.

Wear

All component wear rates are normal.

▲ Contamination

There is a moderate concentration of water present in the oil.

● Fluid Condition

Additive levels indicate the addition of a different brand, or type of oil. The oil is still serviceable provided that the contaminant(s) can be reduced to acceptable levels.

SAMPLE INFORMATION

	method	limit/base	current	history1	history2
Sample Number	Client Info		WC0953989	WC0906577	---
Sample Date	Client Info		02 Jul 2024	16 Feb 2024	---
Machine Age	hrs	Client Info	0	0	---
Oil Age	hrs	Client Info	0	0	---
Oil Changed	Client Info		N/A	N/A	---
Sample Status			ABNORMAL	ABNORMAL	---

WEAR METALS

	method	limit/base	current	history1	history2
Iron	ppm	ASTM D5185(m)	>200	74	---
Chromium	ppm	ASTM D5185(m)	>15	<1	---
Nickel	ppm	ASTM D5185(m)	>15	<1	---
Titanium	ppm	ASTM D5185(m)		0	---
Silver	ppm	ASTM D5185(m)		0	---
Aluminum	ppm	ASTM D5185(m)	>25	9	---
Lead	ppm	ASTM D5185(m)	>100	4	---
Copper	ppm	ASTM D5185(m)	>200	45	---
Tin	ppm	ASTM D5185(m)	>25	2	---
Antimony	ppm	ASTM D5185(m)	>5	0	---
Vanadium	ppm	ASTM D5185(m)		0	---
Beryllium	ppm	ASTM D5185(m)		0	---
Cadmium	ppm	ASTM D5185(m)		0	---

ADDITIVES

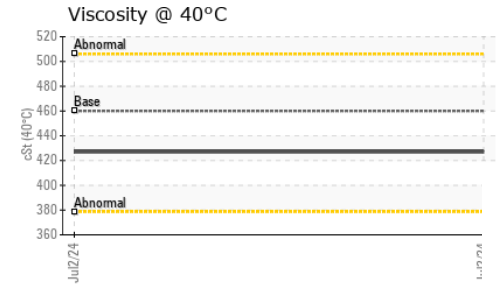
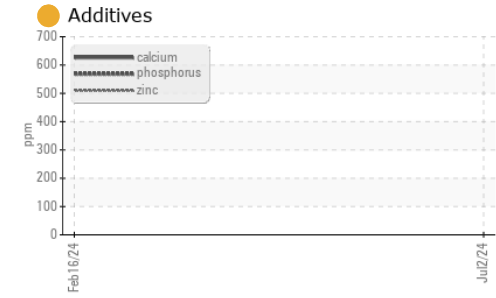
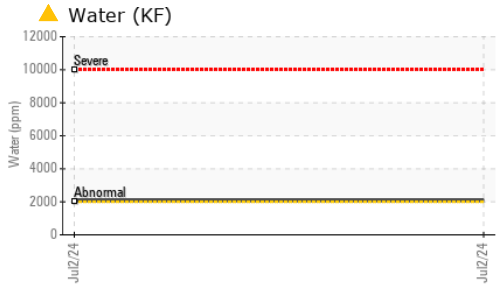
	method	limit/base	current	history1	history2
Boron	ppm	ASTM D5185(m)		<1	---
Barium	ppm	ASTM D5185(m)		<1	---
Molybdenum	ppm	ASTM D5185(m)		0	---
Manganese	ppm	ASTM D5185(m)		<1	---
Magnesium	ppm	ASTM D5185(m)		<1	---
Calcium	ppm	ASTM D5185(m)		43	---
Phosphorus	ppm	ASTM D5185(m)		576	---
Zinc	ppm	ASTM D5185(m)		139	---
Sulfur	ppm	ASTM D5185(m)		713	---
Lithium	ppm	ASTM D5185(m)		<1	---

CONTAMINANTS

	method	limit/base	current	history1	history2
Silicon	ppm	ASTM D5185(m)	>50	33	---
Sodium	ppm	ASTM D5185(m)		12	---
Potassium	ppm	ASTM D5185(m)	>20	<1	---
Water	%	ASTM D6304*	>0.2	▲ 0.206	---
ppm Water	ppm	ASTM D6304*	>2000	▲ 2069	---



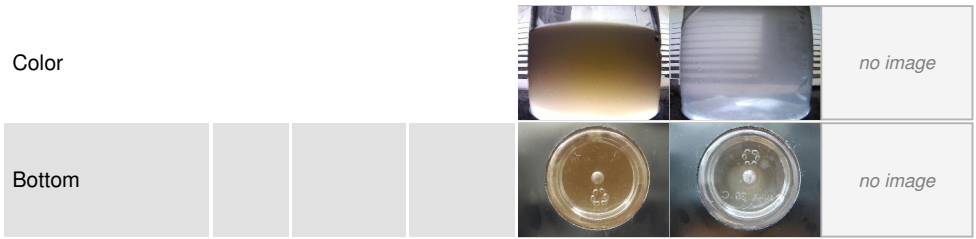
OIL ANALYSIS REPORT



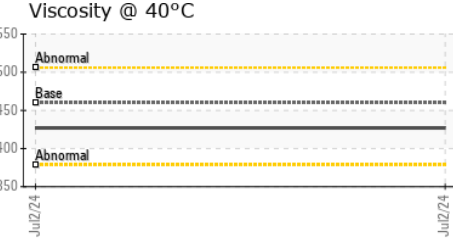
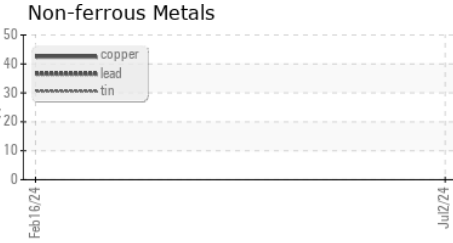
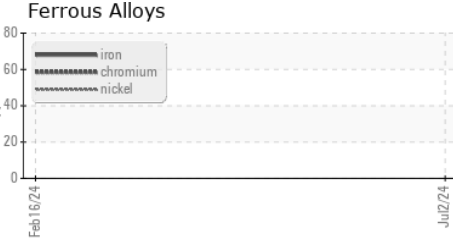
VISUAL	method	limit/base	current	history1	history2	
White Metal	scalar	Visual*	NONE	NONE	NONE	---
Yellow Metal	scalar	Visual*	NONE	NONE	NONE	---
Precipitate	scalar	Visual*	NONE	NONE	NONE	---
Silt	scalar	Visual*	NONE	NONE	NONE	---
Debris	scalar	Visual*	NONE	NONE	NONE	---
Sand/Dirt	scalar	Visual*	NONE	NONE	NONE	---
Appearance	scalar	Visual*	NORML	▲ WGOIL	▲ LAYRD	---
Odor	scalar	Visual*	NORML	NORML	NORML	---
Emulsified Water	scalar	Visual*	>0.2	▲ .5%	---	---
Free Water	scalar	Visual*		NEG	---	---

FLUID PROPERTIES	method	limit/base	current	history1	history2	
Visc @ 40°C	cSt	ASTM D7279(m)	460	427	---	---

SAMPLE IMAGES	method	limit/base	current	history1	history2
---------------	--------	------------	---------	----------	----------



GRAPHS



Laboratory : WearCheck - C8-1175 Appleby Line, Burlington, ON L7L 5H9
Sample No. : WC0953989
Lab Number : 02648241
Unique Number : 5813793
Test Package : IND 1 (Additional Tests: KF)
Received : 16 Jul 2024
Tested : 19 Jul 2024
Diagnosed : 19 Jul 2024 - Kevin Marson

COCA COLA CANADA BOTTLING LTD.
 15 WEST CREEK BLVD
 BRAMPTON, ON
 CA L6T 5T4
 Contact: Chandan Ahuja
 cahuja@cokecanada.com
 T: (635)440-5087
 F:

To discuss this sample report, contact Customer Service at 1-800-268-2131.
 Test denoted (*) outside scope of accreditation, (m) method modified, (e) tested at external lab.
 Validity of results and interpretation are based on the sample and information as supplied.