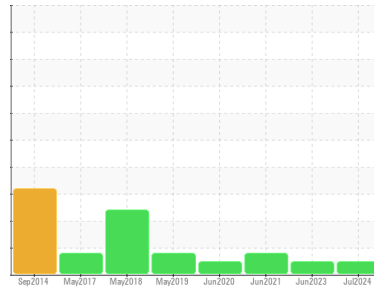




# OIL ANALYSIS REPORT

Sample Rating Trend



**NORMAL**



Machine Id  
**MITSUBISHI M0001**  
 Component  
**Diesel Engine**  
 Fluid  
 **DIESEL ENGINE OIL SAE 15W40 (11 LTR)**

## DIAGNOSIS

### Recommendation

Resample at the next service interval to monitor.

### Wear

Metal levels are typical for a new component breaking in.

### Contamination

There is no indication of any contamination in the oil.

### Fluid Condition

The condition of the oil is acceptable for the time in service.

## SAMPLE INFORMATION

	method	limit/base	current	history1	history2
Sample Number	Client Info		<b>WC0918873</b>	WC0763993	WC0582038
Sample Date	Client Info		<b>08 Jul 2024</b>	09 Jun 2023	11 Jun 2021
Machine Age	hrs	Client Info	<b>279</b>	250	219
Oil Age	hrs	Client Info	<b>42</b>	13	31
Oil Changed	Client Info		<b>Not Chngd</b>	Not Chngd	Not Chngd
Sample Status			<b>NORMAL</b>	NORMAL	MARGINAL

## CONTAMINATION

	method	limit/base	current	history1	history2
Fuel	WC Method	>5	<b>&lt;1.0</b>	<1.0	▲ 4
Water	WC Method	>0.2	<b>NEG</b>	NEG	NEG
Glycol	WC Method		<b>NEG</b>	NEG	NEG

## WEAR METALS

	method	limit/base	current	history1	history2
Iron	ppm	ASTM D5185(m)	>100	<b>3</b>	2
Chromium	ppm	ASTM D5185(m)	>20	<b>&lt;1</b>	0
Nickel	ppm	ASTM D5185(m)	>4	<b>&lt;1</b>	0
Titanium	ppm	ASTM D5185(m)		<b>0</b>	0
Silver	ppm	ASTM D5185(m)	>3	<b>&lt;1</b>	<1
Aluminum	ppm	ASTM D5185(m)	>20	<b>&lt;1</b>	<1
Lead	ppm	ASTM D5185(m)	>40	<b>1</b>	<1
Copper	ppm	ASTM D5185(m)	>330	<b>10</b>	8
Tin	ppm	ASTM D5185(m)	>15	<b>4</b>	1
Antimony	ppm	ASTM D5185(m)		<b>0</b>	0
Vanadium	ppm	ASTM D5185(m)		<b>0</b>	0
Beryllium	ppm	ASTM D5185(m)		<b>0</b>	0
Cadmium	ppm	ASTM D5185(m)		<b>0</b>	0

## ADDITIVES

	method	limit/base	current	history1	history2
Boron	ppm	ASTM D5185(m)	250	<b>7</b>	7
Barium	ppm	ASTM D5185(m)	10	<b>0</b>	0
Molybdenum	ppm	ASTM D5185(m)	100	<b>8</b>	9
Manganese	ppm	ASTM D5185(m)		<b>0</b>	0
Magnesium	ppm	ASTM D5185(m)	450	<b>142</b>	152
Calcium	ppm	ASTM D5185(m)	3000	<b>1877</b>	1941
Phosphorus	ppm	ASTM D5185(m)	1150	<b>851</b>	936
Zinc	ppm	ASTM D5185(m)	1350	<b>952</b>	977
Sulfur	ppm	ASTM D5185(m)	4250	<b>2884</b>	2957
Lithium	ppm	ASTM D5185(m)		<b>&lt;1</b>	<1

## CONTAMINANTS

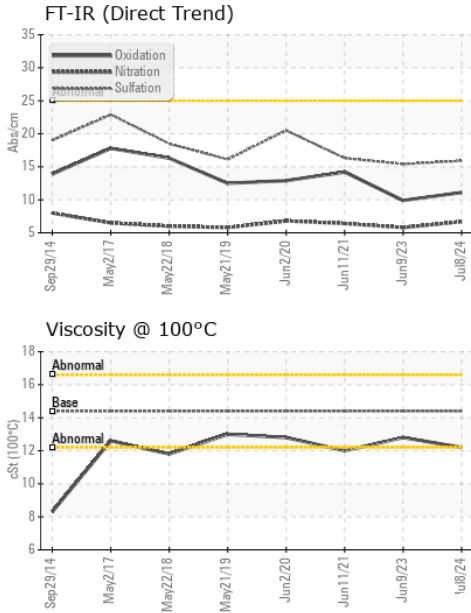
	method	limit/base	current	history1	history2
Silicon	ppm	ASTM D5185(m)	>25	<b>4</b>	3
Sodium	ppm	ASTM D5185(m)	>158	<b>2</b>	2
Potassium	ppm	ASTM D5185(m)	>20	<b>1</b>	1

## INFRA-RED

	method	limit/base	current	history1	history2
Soot %	%	ASTM D7844*	>3	<b>0</b>	0
Nitration	Abs/cm	ASTM D7624*	>20	<b>6.7</b>	5.8
Sulfation	Abs./1mm	ASTM D7415*	>30	<b>15.9</b>	15.4



# OIL ANALYSIS REPORT

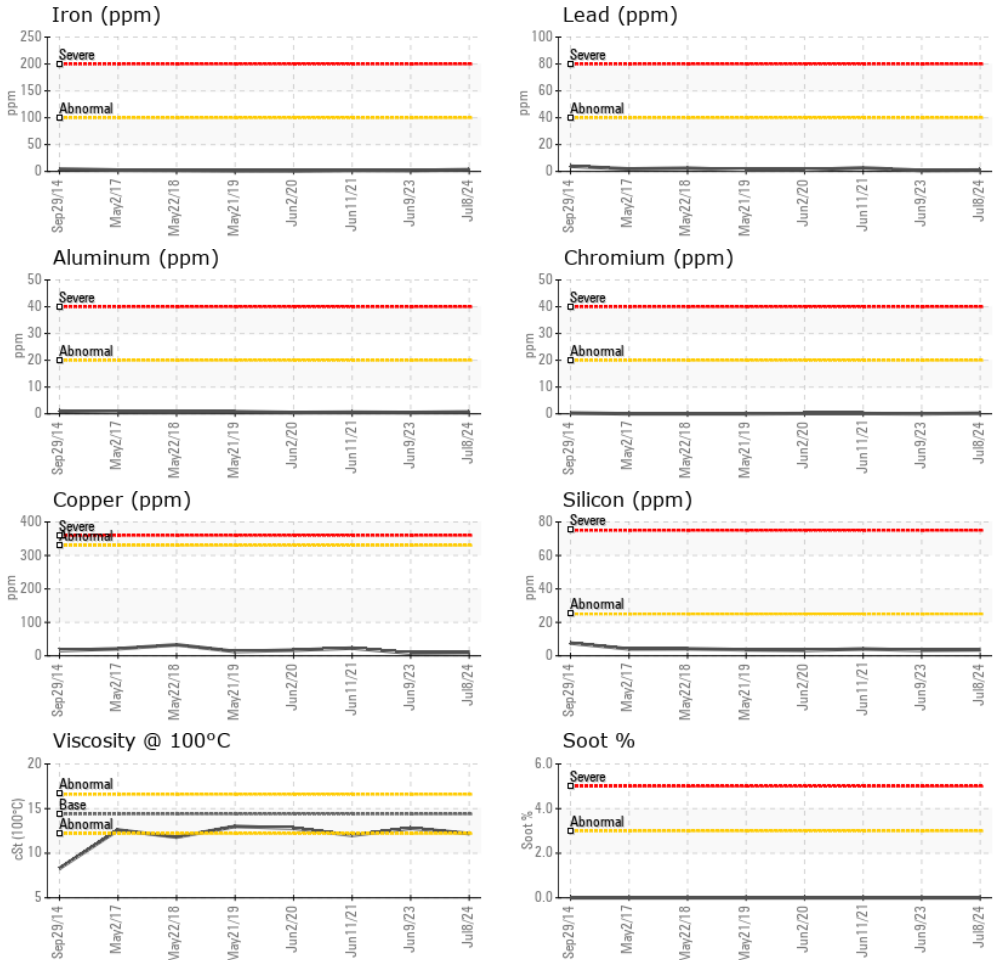


FLUID DEGRADATION	method	limit/base	current	history1	history2	
Oxidation	Abs./1mm	ASTM D7414*	>25	11.1	9.9	14.2

VISUAL	method	limit/base	current	history1	history2	
White Metal	scalar	Visual*	NONE	LIGHT	---	VLITE
Yellow Metal	scalar	Visual*	NONE	NONE	---	NONE
Precipitate	scalar	Visual*	NONE	NONE	---	NONE
Silt	scalar	Visual*	NONE	NONE	---	NONE
Debris	scalar	Visual*	NONE	VLITE	---	NONE
Sand/Dirt	scalar	Visual*	NONE	NONE	---	NONE
Appearance	scalar	Visual*	NORML	NORML	---	NORML
Odor	scalar	Visual*	NORML	NORML	NORML	NORML
Emulsified Water	scalar	Visual*	>0.2	NEG	NEG	NEG
Free Water	scalar	Visual*		NEG	NEG	NEG

FLUID PROPERTIES	method	limit/base	current	history1	history2	
Visc @ 100°C	cSt	ASTM D7279(m)	14.4	12.2	12.8	12.0

## GRAPHS



**Laboratory** : WearCheck - C8-1175 Appleby Line, Burlington, ON L7L 5H9  
**Sample No.** : WC0918873 **Received** : 17 Jul 2024  
**Lab Number** : 02648402 **Tested** : 17 Jul 2024  
**Unique Number** : 5813954 **Diagnosed** : 17 Jul 2024 - Wes Davis  
**Test Package** : MOB 1 ( Additional Tests: Visual )

**GENCARE SERVICES LTD.**  
 360 SOVEREIGN ROAD  
 LONDON, ON  
 CA N6M 1A8  
 Contact: Teresa Matthews  
 tmatthews@gencare.com  
 T: (519)659-7118  
 F: (519)451-1707

To discuss this sample report, contact Customer Service at 1-800-268-2131.  
 Test denoted (\*) outside scope of accreditation, (m) method modified, (e) tested at external lab.  
 Validity of results and interpretation are based on the sample and information as supplied.