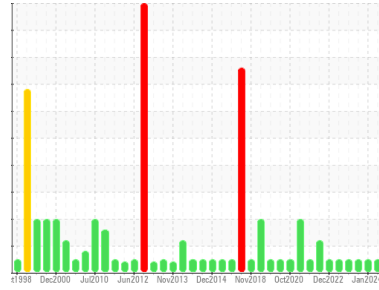




OIL ANALYSIS REPORT

Sample Rating Trend



NORMAL



Area
PUMPHOUSE/HOOD COOLING PUMPS
 Machine Id
C - Hood Cooling Turbine OB
 Component
Lube System
 Fluid
PETRO CANADA HYDREX AW 100 (1 GAL)

DIAGNOSIS

Recommendation

Resample at the next service interval to monitor.

Wear

All component wear rates are normal.

Contamination

The system cleanliness is acceptable for your target ISO 4406 cleanliness code. The system and fluid cleanliness is acceptable.

Fluid Condition

The AN level is acceptable for this fluid. The condition of the oil is suitable for further service.

SAMPLE INFORMATION

	method	limit/base	current	history1	history2
Sample Number	Client Info		WC0968447	WC0898654	WC0850131
Sample Date	Client Info		17 Jul 2024	10 Jan 2024	16 Aug 2023
Machine Age	hrs	Client Info	0	0	0
Oil Age	hrs	Client Info	0	0	0
Oil Changed	Client Info		N/A	N/A	N/A
Sample Status			NORMAL	NORMAL	NORMAL

CONTAMINATION

	method	limit/base	current	history1	history2
Water	WC Method	>5	NEG	NEG	NEG

WEAR METALS

	method	limit/base	current	history1	history2
PQ	ASTM D8184*	>DFLT	0	0	0
Iron	ppm	ASTM D5185(m) >20	7	2	3
Chromium	ppm	ASTM D5185(m) >20	0	0	0
Nickel	ppm	ASTM D5185(m) >20	<1	0	<1
Titanium	ppm	ASTM D5185(m)	0	0	0
Silver	ppm	ASTM D5185(m)	0	0	<1
Aluminum	ppm	ASTM D5185(m) >20	<1	<1	<1
Lead	ppm	ASTM D5185(m) >20	6	8	8
Copper	ppm	ASTM D5185(m) >20	2	6	6
Tin	ppm	ASTM D5185(m) >20	0	2	2
Antimony	ppm	ASTM D5185(m)	0	0	0
Vanadium	ppm	ASTM D5185(m)	0	0	0
Beryllium	ppm	ASTM D5185(m)	0	0	0
Cadmium	ppm	ASTM D5185(m)	0	0	0

ADDITIVES

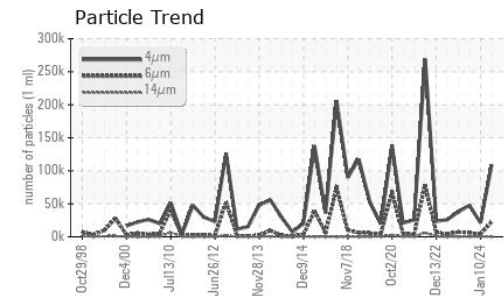
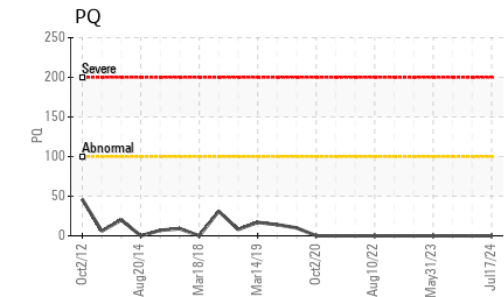
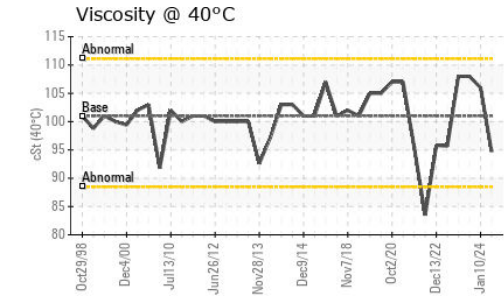
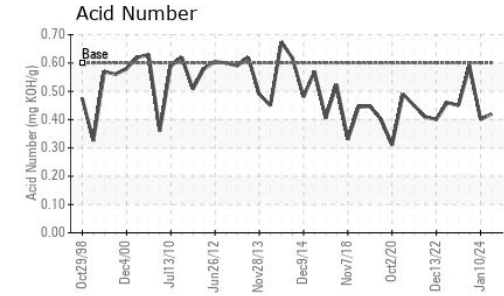
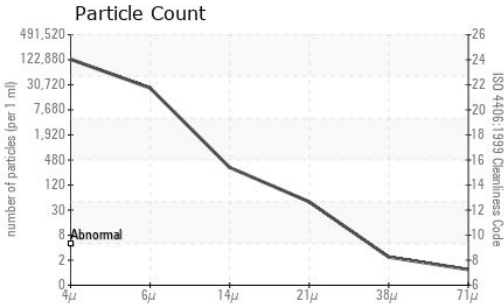
	method	limit/base	current	history1	history2
Boron	ppm	ASTM D5185(m) 0	1	0	<1
Barium	ppm	ASTM D5185(m) 0	17	0	0
Molybdenum	ppm	ASTM D5185(m) 0	0	0	0
Manganese	ppm	ASTM D5185(m) 0	0	0	0
Magnesium	ppm	ASTM D5185(m) 0	0	<1	<1
Calcium	ppm	ASTM D5185(m) 50	26	66	68
Phosphorus	ppm	ASTM D5185(m) 330	332	322	334
Zinc	ppm	ASTM D5185(m) 430	405	406	401
Sulfur	ppm	ASTM D5185(m) 760	2932	2441	2286
Lithium	ppm	ASTM D5185(m)	<1	<1	<1

CONTAMINANTS

	method	limit/base	current	history1	history2
Silicon	ppm	ASTM D5185(m) >15	2	3	3
Sodium	ppm	ASTM D5185(m)	19	0	<1
Potassium	ppm	ASTM D5185(m) >20	<1	<1	<1



OIL ANALYSIS REPORT



FLUID CLEANLINESS	method	limit/base	current	history1	history2
Particles >4µm	ASTM D7647		108760	21334	47742
Particles >6µm	ASTM D7647	>10240000	22353	3724	6311
Particles >14µm	ASTM D7647	>10240000	279	263	423
Particles >21µm	ASTM D7647	>25600000	42	44	113
Particles >38µm	ASTM D7647	>6400000	2	3	2
Particles >71µm	ASTM D7647	>1600000	1	1	0
Oil Cleanliness	ISO 4406 (c)	>--/30/30	24/22/15	22/19/15	23/20/16

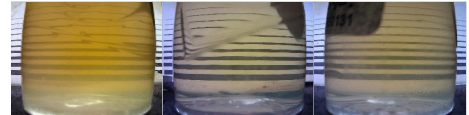
FLUID DEGRADATION	method	limit/base	current	history1	history2
Acid Number (AN)	mg KOH/g ASTM D974*	0.60	0.42	0.40	0.59

VISUAL	method	limit/base	current	history1	history2
White Metal	scalar Visual*	NONE	NONE	NONE	NONE
Yellow Metal	scalar Visual*	NONE	NONE	NONE	NONE
Precipitate	scalar Visual*	NONE	NONE	NONE	NONE
Silt	scalar Visual*	NONE	NONE	NONE	VLITE
Debris	scalar Visual*	NONE	NONE	NONE	VLITE
Sand/Dirt	scalar Visual*	NONE	NONE	NONE	NONE
Appearance	scalar Visual*	NORML	NORML	NORML	NORML
Odor	scalar Visual*	NORML	NORML	NORML	NORML
Emulsified Water	scalar Visual*	>5	NEG	NEG	NEG
Free Water	scalar Visual*		NEG	NEG	NEG

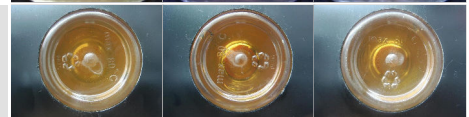
FLUID PROPERTIES	method	limit/base	current	history1	history2
Visc @ 40°C	cSt ASTM D7279(m)	101	94.7	106	108

SAMPLE IMAGES	method	limit/base	current	history1	history2
---------------	--------	------------	---------	----------	----------

Color



Bottom



Laboratory : WearCheck - C8-1175 Appleby Line, Burlington, ON L7L 5H9
Sample No. : WC0968447
Lab Number : **02648444**
Unique Number : 5813996
Test Package : IND 2 (Additional Tests: PQ)

STELCO - BOSC - Basic Oxygen Slab Caster
 2330 Regional Road #3, Door: BOSC8
 NANTICOKE, ON
 CA N0A 1L0
 Contact: Tom Walden
 Thomas.Walden@stelco.com
 T: (519)587-4541
 F: (519)587-7702

To discuss this sample report, contact Customer Service at 1-800-268-2131.
 Test denoted (*) outside scope of accreditation, (m) method modified, (e) tested at external lab.
 Validity of results and interpretation are based on the sample and information as supplied.