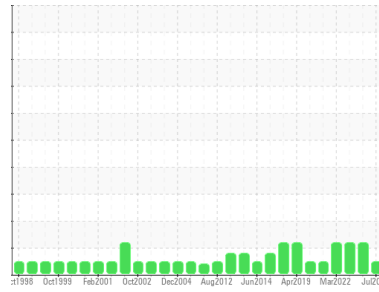




OIL ANALYSIS REPORT

Sample Rating Trend



NORMAL



Area

Caster/Segment Drives

Machine Id

B - Strand 2 - 2 Gear Box Roll # 25 Top

Component

Gearbox

Fluid

SHELL OMALA 220 (36 GAL)

DIAGNOSIS

Recommendation

Resample at the next service interval to monitor.

Wear

All component wear rates are normal.

Contamination

The system cleanliness is acceptable for your target ISO 4406 cleanliness code. The system and fluid cleanliness is acceptable.

Fluid Condition

The AN level is acceptable for this fluid. The condition of the oil is suitable for further service.

SAMPLE INFORMATION

	method	limit/base	current	history1	history2
Sample Number	Client Info		WC0968475	WC0838959	WC0743640
Sample Date	Client Info		17 Jul 2024	13 Jul 2023	13 Sep 2022
Machine Age	hrs	Client Info	0	0	0
Oil Age	hrs	Client Info	0	0	0
Oil Changed	Client Info		N/A	N/A	N/A
Sample Status			NORMAL	ABNORMAL	ABNORMAL

CONTAMINATION

	method	limit/base	current	history1	history2
Water	WC Method	>5	NEG	NEG	NEG

WEAR METALS

	method	limit/base	current	history1	history2	
PQ	ASTM D8184*	>DFLT	0	0	0	
Iron	ppm	ASTM D5185(m)	>200	114	80	71
Chromium	ppm	ASTM D5185(m)	>15	3	2	2
Nickel	ppm	ASTM D5185(m)	>15	1	<1	<1
Titanium	ppm	ASTM D5185(m)		0	0	0
Silver	ppm	ASTM D5185(m)		0	0	0
Aluminum	ppm	ASTM D5185(m)	>25	<1	<1	<1
Lead	ppm	ASTM D5185(m)	>100	0	<1	<1
Copper	ppm	ASTM D5185(m)	>200	<1	<1	<1
Tin	ppm	ASTM D5185(m)	>25	0	0	0
Antimony	ppm	ASTM D5185(m)	>5	0	<1	<1
Vanadium	ppm	ASTM D5185(m)		0	0	0
Beryllium	ppm	ASTM D5185(m)		0	0	0
Cadmium	ppm	ASTM D5185(m)		0	0	0

ADDITIVES

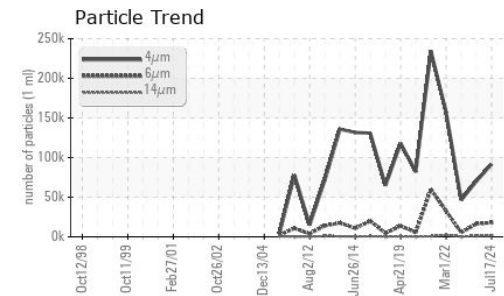
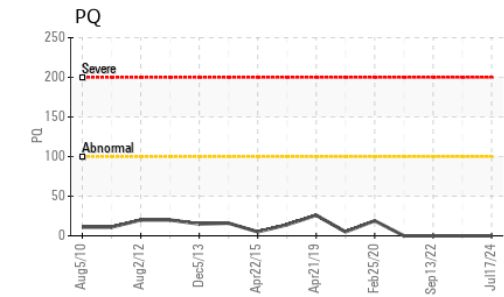
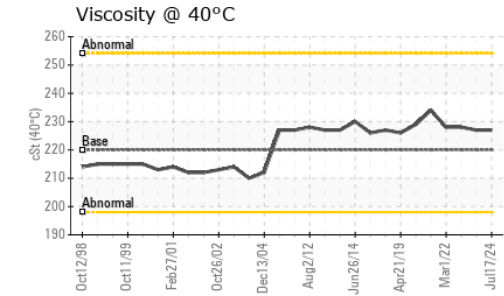
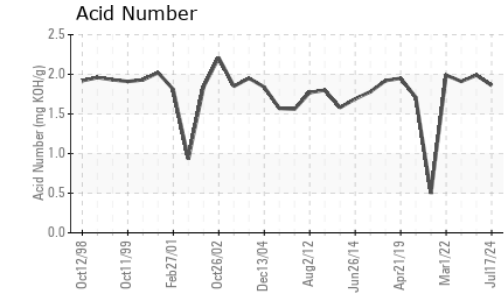
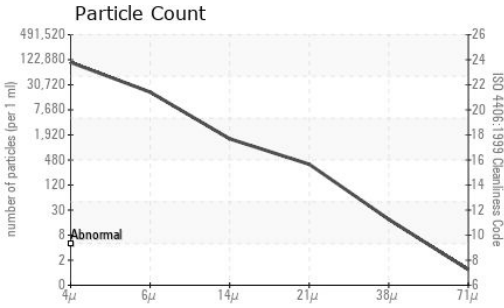
	method	limit/base	current	history1	history2	
Boron	ppm	ASTM D5185(m)	4.4	1	1	2
Barium	ppm	ASTM D5185(m)	0.0	0	0	0
Molybdenum	ppm	ASTM D5185(m)	0	0	0	0
Manganese	ppm	ASTM D5185(m)		<1	<1	<1
Magnesium	ppm	ASTM D5185(m)	0	2	3	2
Calcium	ppm	ASTM D5185(m)	0	2	2	<1
Phosphorus	ppm	ASTM D5185(m)	215	485	501	496
Zinc	ppm	ASTM D5185(m)	0	43	44	39
Sulfur	ppm	ASTM D5185(m)	7039	7256	7592	7649
Lithium	ppm	ASTM D5185(m)		<1	<1	<1

CONTAMINANTS

	method	limit/base	current	history1	history2	
Silicon	ppm	ASTM D5185(m)	>50	2	2	2
Sodium	ppm	ASTM D5185(m)		1	2	1
Potassium	ppm	ASTM D5185(m)	>20	1	2	<1



OIL ANALYSIS REPORT



Laboratory : WearCheck - C8-1175 Appleby Line, Burlington, ON L7L 5H9
Sample No. : WC0968475
Lab Number : 02648502
Unique Number : 5814054
Test Package : IND 2 (Additional Tests: PQ, PrtCount)

STELCO - BOSC - Basic Oxygen Slab Caster
 2330 Regional Road #3, Door: BOSC8
 NANTICOKE, ON
 CA N0A 1L0
 Contact: Tom Walden
 Thomas.Walden@stelco.com
 T: (519)587-4541
 F: (519)587-7702

To discuss this sample report, contact Customer Service at 1-800-268-2131.
 Test denoted (*) outside scope of accreditation, (m) method modified, (e) tested at external lab.
 Validity of results and interpretation are based on the sample and information as supplied.

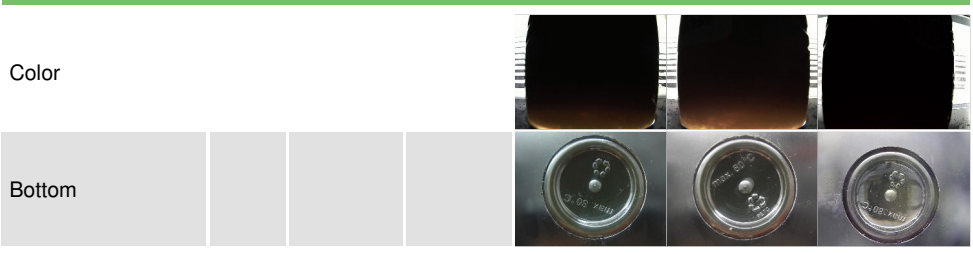
FLUID CLEANLINESS	method	limit/base	current	history1	history2
Particles >4µm	ASTM D7647		91635	70190	46486
Particles >6µm	ASTM D7647	>10240000	17822	16321	5479
Particles >14µm	ASTM D7647	>10240000	1356	1080	271
Particles >21µm	ASTM D7647	>25600000	333	228	65
Particles >38µm	ASTM D7647	>6400000	16	4	0
Particles >71µm	ASTM D7647	>1600000	1	0	0
Oil Cleanliness	ISO 4406 (c)	>--/30/30	24/21/18	23/21/17	23/20/15

FLUID DEGRADATION	method	limit/base	current	history1	history2
Acid Number (AN)	mg KOH/g ASTM D974*		1.86	▲ 1.99	▲ 1.91

VISUAL	method	limit/base	current	history1	history2
White Metal	scalar Visual*	NONE	VLITE	NONE	NONE
Yellow Metal	scalar Visual*	NONE	NONE	NONE	NONE
Precipitate	scalar Visual*	NONE	NONE	NONE	NONE
Silt	scalar Visual*	NONE	NONE	NONE	NONE
Debris	scalar Visual*	NONE	NONE	NONE	NONE
Sand/Dirt	scalar Visual*	NONE	NONE	NONE	NONE
Appearance	scalar Visual*	NORML	NORML	NORML	NORML
Odor	scalar Visual*	NORML	NORML	NORML	NORML
Emulsified Water	scalar Visual*	>5	NEG	NEG	NEG
Free Water	scalar Visual*		NEG	NEG	NEG

FLUID PROPERTIES	method	limit/base	current	history1	history2
Visc @ 40°C	cSt ASTM D7279(m)	220	227	227	228

SAMPLE IMAGES	method	limit/base	current	history1	history2
---------------	--------	------------	---------	----------	----------



Color

Bottom