

PROBLEM SUMMARY

Sample Rating Trend

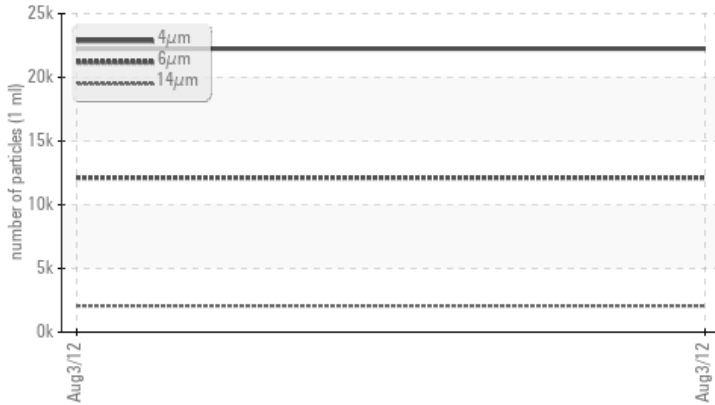
ISO



Machine Id
A-01
Component
Wind Turbine Gearbox
Fluid
MOBIL MOBILGEAR SHC XMP 320 (74 GAL)

COMPONENT CONDITION SUMMARY

▲ Particle Trend



RECOMMENDATION

No corrective action is recommended at this time. The filter change at the time of sampling has been noted. Resample at the next service interval to monitor.

PROBLEMATIC TEST RESULTS

Sample Status			ABNORMAL	---	---
Particles >6µm	ASTM D7647		▲ 12117	---	---
Particles >14µm	ASTM D7647		▲ 2064	---	---
Particles >21µm	ASTM D7647		▲ 696	---	---
Particles >38µm	ASTM D7647		▲ 107	---	---
Oil Cleanliness	ISO 4406 (c)		▲ 22/21/18	---	---

Customer Id: MITDES
Sample No.: RP107335
Lab Number: 03171158
Test Package: IND 2



To manage this report scan the QR code

To discuss the diagnosis or test data:
Doug Bogart +1 (800)237-1369 x4016
dougb@wearcheckusa.com

To change component or sample information:
Customer Service +1 1-800-237-1369
customerservice@wearcheck.com

RECOMMENDED ACTIONS

There are no recommended actions for this sample.

HISTORICAL DIAGNOSIS

OIL ANALYSIS REPORT

Sample Rating Trend



ISO



Machine Id

A-01

Component

Wind Turbine Gearbox

Fluid

MOBIL MOBILGEAR SHC XMP 320 (74 GAL)

DIAGNOSIS

▲ Recommendation

No corrective action is recommended at this time. The filter change at the time of sampling has been noted. Resample at the next service interval to monitor.

Wear

All component wear rates are normal.

▲ Contamination

There is a high amount of particulates present in the oil.

Fluid Condition

The condition of the oil is suitable for further service.

SAMPLE INFORMATION

method	limit/base	current	history1	history2
Sample Number	Client Info	RP107335	---	---
Sample Date	Client Info	03 Aug 2012	---	---
Machine Age	hrs Client Info	3321	---	---
Oil Age	hrs Client Info	3321	---	---
Oil Changed	Client Info	Not Changed	---	---
Sample Status		ABNORMAL	---	---

WEAR METALS

method	limit/base	current	history1	history2
PQ	ASTM D8184	11.0	---	---
Iron	ppm ASTM D5185m	8	---	---
Chromium	ppm ASTM D5185m	0	---	---
Nickel	ppm ASTM D5185m	0	---	---
Titanium	ppm ASTM D5185m	0	---	---
Silver	ppm ASTM D5185m	0	---	---
Aluminum	ppm ASTM D5185m	0	---	---
Lead	ppm ASTM D5185m	0	---	---
Copper	ppm ASTM D5185m	<1	---	---
Tin	ppm ASTM D5185m	0	---	---
Antimony	ppm ASTM D5185m	0	---	---
Vanadium	ppm ASTM D5185m	0	---	---
Cadmium	ppm ASTM D5185m	0	---	---

ADDITIVES

method	limit/base	current	history1	history2
Boron	ppm ASTM D5185m	<1	---	---
Barium	ppm ASTM D5185m	0	---	---
Molybdenum	ppm ASTM D5185m	0	---	---
Manganese	ppm ASTM D5185m	<1	---	---
Magnesium	ppm ASTM D5185m	0	---	---
Calcium	ppm ASTM D5185m	0	---	---
Phosphorus	ppm ASTM D5185m	409	---	---
Zinc	ppm ASTM D5185m	0	---	---

CONTAMINANTS

method	limit/base	current	history1	history2
Silicon	ppm ASTM D5185m	7	---	---
Sodium	ppm ASTM D5185m	0	---	---
Potassium	ppm ASTM D5185m	0	---	---
Water	% ASTM D6304	0.003	---	---
ppm Water	ppm ASTM D6304	30	---	---

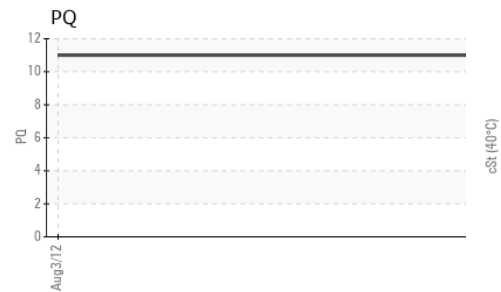
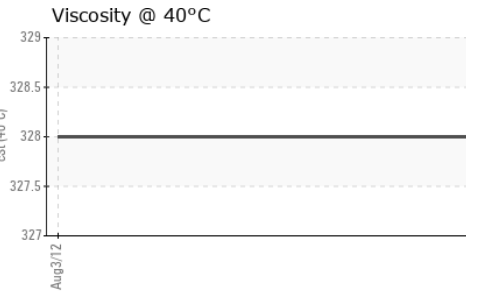
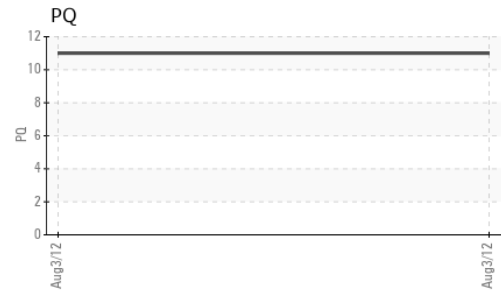
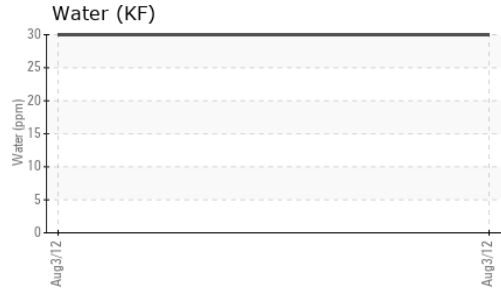
FLUID CLEANLINESS

method	limit/base	current	history1	history2
Particles >4µm	ASTM D7647	22244	---	---
Particles >6µm	ASTM D7647	▲ 12117	---	---
Particles >14µm	ASTM D7647	▲ 2064	---	---
Particles >21µm	ASTM D7647	▲ 696	---	---
Particles >38µm	ASTM D7647	▲ 107	---	---
Particles >71µm	ASTM D7647	11	---	---
Oil Cleanliness	ISO 4406 (c)	▲ 22/21/18	---	---

FLUID DEGRADATION

method	limit/base	current	history1	history2
Acid Number (AN)	mg KOH/g ASTM D8045	1.29	---	---

OIL ANALYSIS REPORT

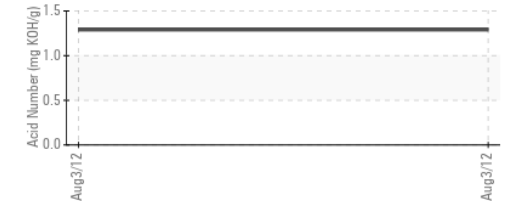
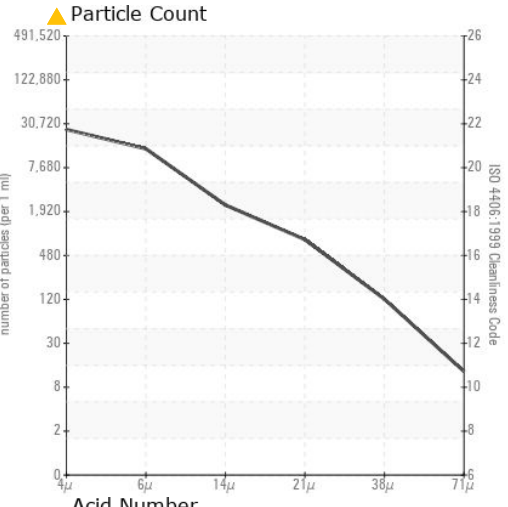
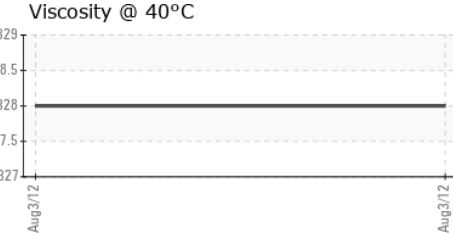
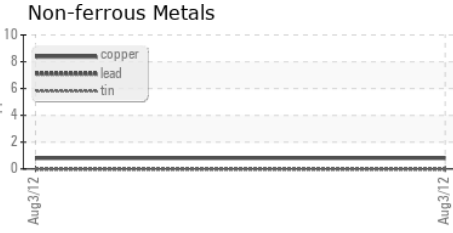
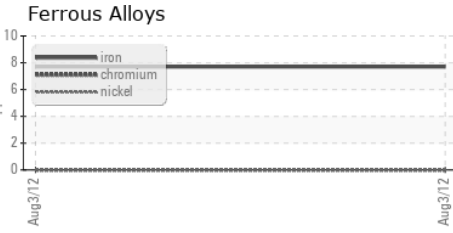


VISUAL	method	limit/base	current	history1	history2
White Metal	scalar	*Visual	NONE	NONE	---
Yellow Metal	scalar	*Visual	NONE	NONE	---
Precipitate	scalar	*Visual	NONE	NONE	---
Silt	scalar	*Visual	NONE	NONE	---
Debris	scalar	*Visual	NONE	NONE	---
Sand/Dirt	scalar	*Visual	NONE	NONE	---
Appearance	scalar	*Visual	NORML	NORML	---
Odor	scalar	*Visual	NORML	NORML	---
Emulsified Water	scalar	*Visual	NEG	---	---
Free Water	scalar	*Visual	NEG	---	---

FLUID PROPERTIES	method	limit/base	current	history1	history2
Visc @ 40°C	cSt	ASTM D445	328.0	---	---
Fluid Type		*In-house	ISO_GEAR_PAO	---	---

SAMPLE IMAGES	method	limit/base	current	history1	history2
Color				no image	no image
Bottom				no image	no image

GRAPHS



Laboratory : WearCheck USA - 501 Madison Ave., Cary, NC 27513
Sample No. : RP107335 **Received** : 26 Dec 2012
Lab Number : 03171158 **Diagnosed** : 31 Dec 2012
Unique Number : 6078683 **Diagnostician** : Doug Bogart
Test Package : IND 2 (Additional Tests: FluidDetermination, PQ, PrtCount)

DIAMOND WTG - MOUNTAIN VIEW IV
P.O. BOX 880
DESERT HOT SPRINGS, CA
US 92240
Contact: SERVICE MANAGER

To discuss this sample report, contact Customer Service at 1-800-237-1369.
* - Denotes test methods that are outside of the ISO 17025 scope of accreditation.
Statements of conformity to specifications are based on the simple acceptance decision rule (JCGM 106:2012)

T:
F: (760)329-7122