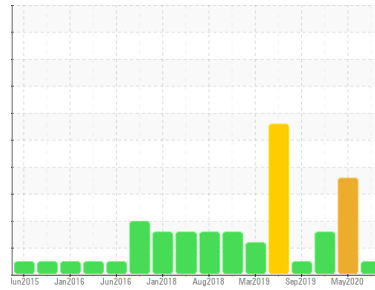




OIL ANALYSIS REPORT

Sample Rating Trend



NORMAL



Machine Id
KAESER C-6F (S/N 752706)

Component
Compressor

Fluid
KAESER SIGMA (OEM) S-460 (--- GAL)

DIAGNOSIS

Recommendation

Resample at the next service interval to monitor.

Wear

All component wear rates are normal.

Contamination

The amount and size of particulates present in the system are acceptable. There is no indication of any contamination in the oil.

Fluid Condition

The AN level is acceptable for this fluid. The condition of the oil is suitable for further service.

SAMPLE INFORMATION		method	limit/base	current	history 1	history 2
Sample Number	Client Info			WC0448255	WC0390911	WC0390905
Sample Date	Client Info			28 Aug 2020	04 May 2020	08 Jan 2020
Machine Age	hrs	Client Info		85249	84413	84005
Oil Age	hrs	Client Info		0	0	0
Oil Changed	Client Info			Not Changed	Changed	N/A
Sample Status				NORMAL	ABNORMAL	ABNORMAL

WEAR METALS		method	limit/base	current	history 1	history 2
Iron	ppm	ASTM D5185m	>50	<1	2	<1
Chromium	ppm	ASTM D5185m	>10	0	0	0
Nickel	ppm	ASTM D5185m	>3	0	<1	<1
Titanium	ppm	ASTM D5185m	>3	0	0	0
Silver	ppm	ASTM D5185m	>2	0	<1	0
Aluminum	ppm	ASTM D5185m	>10	<1	1	<1
Lead	ppm	ASTM D5185m	>10	0	<1	0
Copper	ppm	ASTM D5185m	>50	4	<1	4
Tin	ppm	ASTM D5185m	>10	<1	<1	<1
Antimony	ppm	ASTM D5185m		0	0	0
Vanadium	ppm	ASTM D5185m		0	0	0
Cadmium	ppm	ASTM D5185m		0	<1	0

ADDITIVES		method	limit/base	current	history 1	history 2
Boron	ppm	ASTM D5185m		12	6	<1
Barium	ppm	ASTM D5185m	90	7	<1	3
Molybdenum	ppm	ASTM D5185m		0	0	0
Manganese	ppm	ASTM D5185m		0	<1	<1
Magnesium	ppm	ASTM D5185m	90	1	<1	13
Calcium	ppm	ASTM D5185m	2	0	▲ 40	0
Phosphorus	ppm	ASTM D5185m		2	▲ 668	5
Zinc	ppm	ASTM D5185m		15	8	7
Sulfur	ppm	ASTM D5185m		15607	127	16938

CONTAMINANTS		method	limit/base	current	history 1	history 2
Silicon	ppm	ASTM D5185m	>25	0	2	<1
Sodium	ppm	ASTM D5185m		2	15	0
Potassium	ppm	ASTM D5185m	>20	0	2	<1

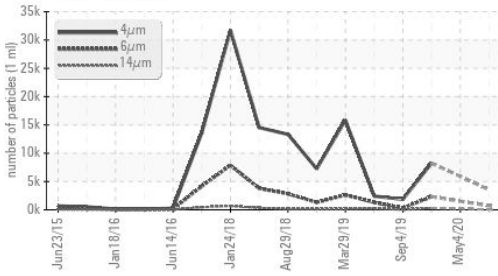
FLUID CLEANLINESS		method	limit/base	current	history 1	history 2
Particles >4µm		ASTM D7647		3534	---	8246
Particles >6µm		ASTM D7647	>1300	711	---	▲ 2329
Particles >14µm		ASTM D7647	>80	39	---	▲ 291
Particles >21µm		ASTM D7647	>20	12	---	▲ 96
Particles >38µm		ASTM D7647	>4	2	---	▲ 7
Particles >71µm		ASTM D7647	>3	0	---	0
Oil Cleanliness		ISO 4406 (c)	>--/17/13	19/17/12	---	▲ 20/18/15

FLUID DEGRADATION		method	limit/base	current	history 1	history 2
Acid Number (AN)	mg KOH/g	ASTM D8045	0.4	0.392	0.559	0.360

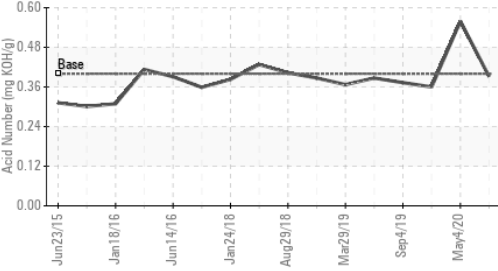


OIL ANALYSIS REPORT

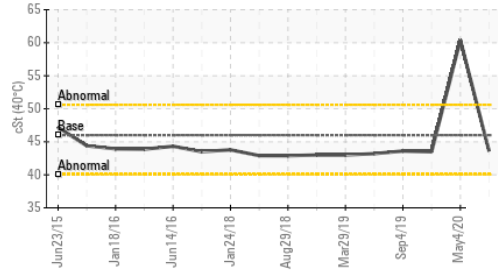
Particle Trend



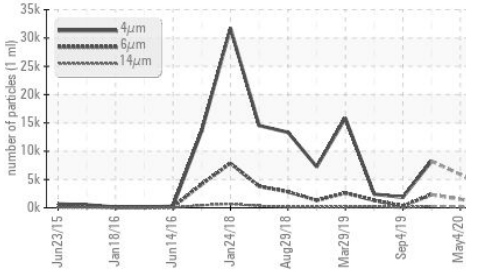
Acid Number



Viscosity @ 40°C



Particle Trend

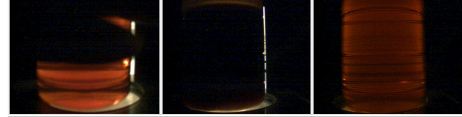


VISUAL	method	limit/base	current	history 1	history 2
White Metal	scalar	*Visual	NONE	NONE	LIGHT
Yellow Metal	scalar	*Visual	NONE	NONE	NONE
Precipitate	scalar	*Visual	NONE	NONE	NONE
Silt	scalar	*Visual	NONE	NONE	NONE
Debris	scalar	*Visual	NONE	LIGHT	NONE
Sand/Dirt	scalar	*Visual	NONE	NONE	NONE
Appearance	scalar	*Visual	NORML	▲ MILKY	NORML
Odor	scalar	*Visual	NORML	NORML	NORML
Emulsified Water	scalar	*Visual	>0.05	▲ 0.2%	NEG
Free Water	scalar	*Visual	NEG	NEG	NEG

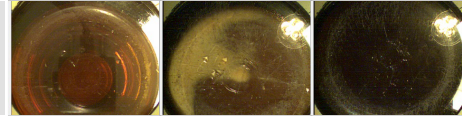
FLUID PROPERTIES	method	limit/base	current	history 1	history 2
Visc @ 40°C	cSt	ASTM D445 46	43.6	▲ 60.4	43.5

SAMPLE IMAGES	method	limit/base	current	history 1	history 2
---------------	--------	------------	---------	-----------	-----------

Color

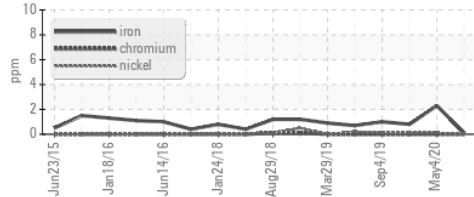


Bottom

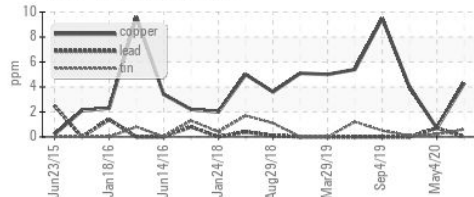


GRAPHS

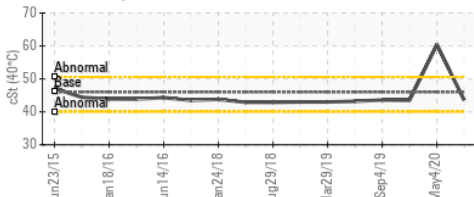
Ferrous Alloys



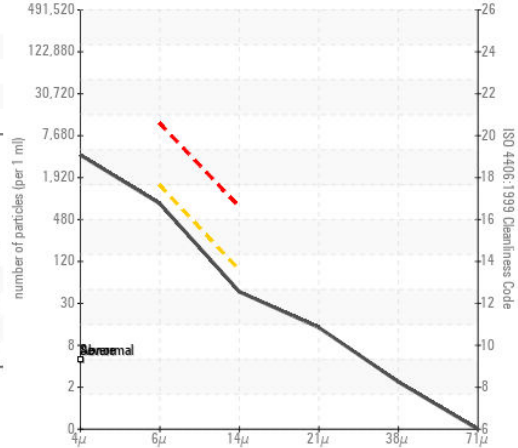
Non-ferrous Metals



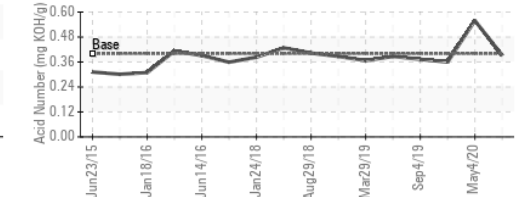
Viscosity @ 40°C



Particle Count



Acid Number



Certificate L2367

Laboratory : WearCheck USA - 501 Madison Ave., Cary, NC 27513
 Sample No. : WC0448255 Received : 04 Sep 2020
 Lab Number : 05059541 Diagnosed : 09 Sep 2020
 Unique Number : 9164722 Diagnostician : Doug Bogart
 Test Package : IND 2 (Additional Tests: PrtCount)

To discuss this sample report, contact Customer Service at 1-800-237-1369.

* - Denotes test methods that are outside of the ISO 17025 scope of accreditation.

Statements of conformity to specifications are based on the simple acceptance decision rule (JCGM 106:2012)

2290 CALLAHAN RD
 LONGVIEW, TX
 US 75607
 Contact: ROB WALLIN
 rwallin@westlake.com
 T: (903)242-7576
 F: (903)758-9521