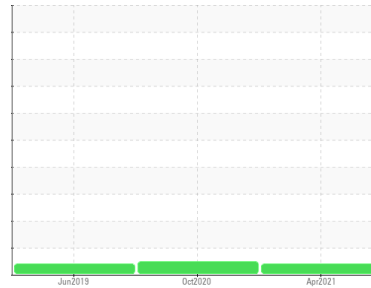


OIL ANALYSIS REPORT

Sample Rating Trend



VIS DEBRIS



Machine Id
KAESER ASD 30 6600677 (S/N 1027)

Component
Compressor

Fluid
KAESER SIGMA (OEM) S-460 (--- GAL)

DIAGNOSIS

▲ Recommendation

No corrective action is recommended at this time. The filter change at the time of sampling has been noted. Resample at the next service interval to monitor. We were unable to perform a particle count due to a high concentration of particles present in this sample.

Wear

All component wear rates are normal.

▲ Contamination

Moderate concentration of visible dirt/debris present in the oil.

Fluid Condition

The AN level is acceptable for this fluid. The condition of the oil is suitable for further service.

SAMPLE INFORMATION

	method	limit/base	current	history1	history2
Sample Number	Client Info		KC86336	KC72897	KC67749
Sample Date	Client Info		26 Apr 2021	14 Oct 2020	19 Jun 2019
Machine Age	hrs	Client Info	6376	5052	1926
Oil Age	hrs	Client Info	1331	3126	1926
Oil Changed	Client Info		Not Chngd	Changed	Changed
Sample Status			ABNORMAL	NORMAL	ATTENTION

WEAR METALS

	method	limit/base	current	history1	history2
Iron	ppm	ASTM D5185m >50	<1	<1	<1
Chromium	ppm	ASTM D5185m >10	0	0	0
Nickel	ppm	ASTM D5185m >3	0	0	0
Titanium	ppm	ASTM D5185m >3	0	0	0
Silver	ppm	ASTM D5185m >2	<1	<1	0
Aluminum	ppm	ASTM D5185m >10	1	<1	<1
Lead	ppm	ASTM D5185m >10	0	0	0
Copper	ppm	ASTM D5185m >50	1	5	7
Tin	ppm	ASTM D5185m >10	<1	0	0
Antimony	ppm	ASTM D5185m	0	0	0
Vanadium	ppm	ASTM D5185m	0	0	0
Cadmium	ppm	ASTM D5185m	<1	0	0

ADDITIVES

	method	limit/base	current	history1	history2
Boron	ppm	ASTM D5185m	11	12	<1
Barium	ppm	ASTM D5185m 90	58	0	0
Molybdenum	ppm	ASTM D5185m	<1	0	0
Manganese	ppm	ASTM D5185m	<1	0	<1
Magnesium	ppm	ASTM D5185m 90	67	<1	4
Calcium	ppm	ASTM D5185m 2	<1	0	0
Phosphorus	ppm	ASTM D5185m	4	2	1
Zinc	ppm	ASTM D5185m	4	46	65

CONTAMINANTS

	method	limit/base	current	history1	history2
Silicon	ppm	ASTM D5185m >25	<1	3	<1
Sodium	ppm	ASTM D5185m	3	1	<1
Potassium	ppm	ASTM D5185m >20	<1	0	1
Water	%	ASTM D6304 >0.05	0.025	0.008	0.015
ppm Water	ppm	ASTM D6304 >500	253.8	80.7	150

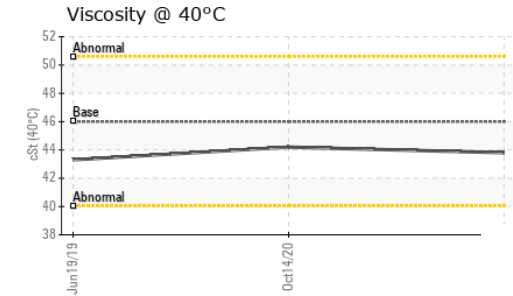
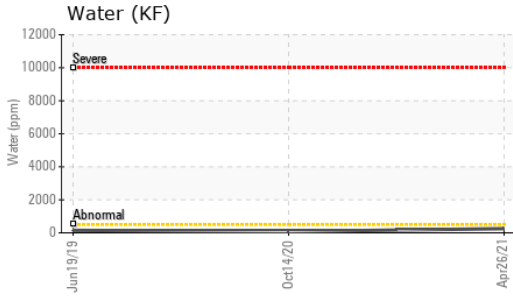
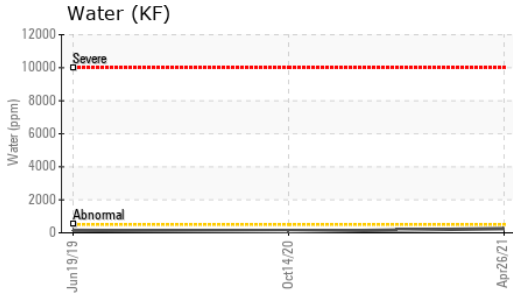
FLUID CLEANLINESS

	method	limit/base	current	history1	history2
Particles >4µm	ASTM D7647		---	1018	7718
Particles >6µm	ASTM D7647	>1300	---	178	▲ 1904
Particles >14µm	ASTM D7647	>80	---	3	19
Particles >21µm	ASTM D7647	>20	---	0	3
Particles >38µm	ASTM D7647	>4	---	0	0
Particles >71µm	ASTM D7647	>3	---	0	0
Oil Cleanliness	ISO 4406 (c)	>--/17/13	---	15/9	▲ 18/11

FLUID DEGRADATION

	method	limit/base	current	history1	history2
Acid Number (AN)	mg KOH/g	ASTM D8045 0.4	0.349	0.374	0.042

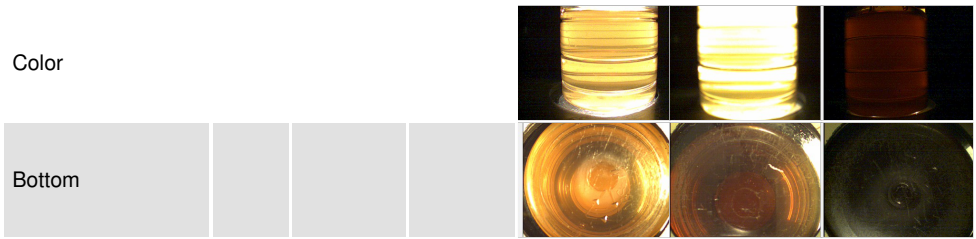
OIL ANALYSIS REPORT



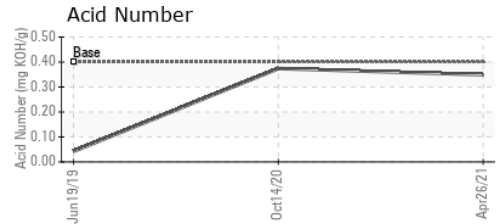
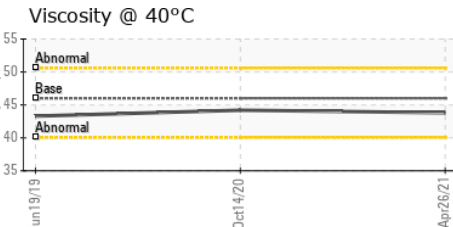
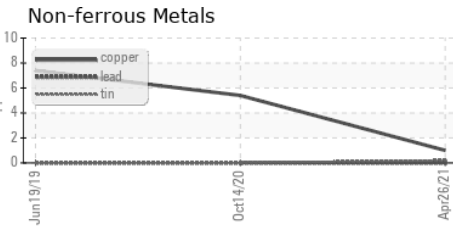
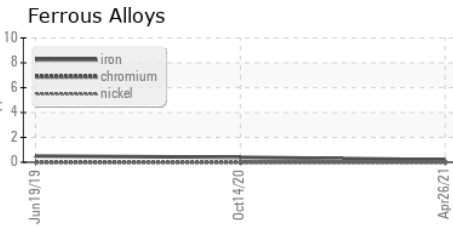
VISUAL	method	limit/base	current	history1	history2
White Metal	scalar	*Visual	NONE	NONE	NONE
Yellow Metal	scalar	*Visual	NONE	NONE	NONE
Precipitate	scalar	*Visual	NONE	NONE	NONE
Silt	scalar	*Visual	NONE	NONE	NONE
Debris	scalar	*Visual	NONE	▲ MODER	NONE
Sand/Dirt	scalar	*Visual	NONE	NONE	NONE
Appearance	scalar	*Visual	NORML	NORML	NORML
Odor	scalar	*Visual	NORML	NORML	NORML
Emulsified Water	scalar	*Visual	>0.05	NEG	NEG
Free Water	scalar	*Visual		NEG	NEG

FLUID PROPERTIES	method	limit/base	current	history1	history2
Visc @ 40°C	cSt	ASTM D445 46	43.8	44.2	43.3

SAMPLE IMAGES	method	limit/base	current	history1	history2
---------------	--------	------------	---------	----------	----------



GRAPHS



Certificate L2367

Laboratory : WearCheck USA - 501 Madison Ave., Cary, NC 27513
Sample No. : KC86336 **Recieved** : 01 Jun 2021
Lab Number : 05267324 **Diagnosed** : 02 Jun 2021
Unique Number : 9526256 **Diagnostician** : Don Baldrige
Test Package : IND 2

ANSCO MACHINE CO
 60 CUYAHOGA FALLS INDUSTRIAL PKWY
 PENINSULA, OH
 US 44264
 Contact: Service Manager

To discuss this sample report, contact Customer Service at 1-800-237-1369.

* - Denotes test methods that are outside of the ISO 17025 scope of accreditation.

Statements of conformity to specifications are based on the simple acceptance decision rule (JCGM 106:2012)

T:
F: