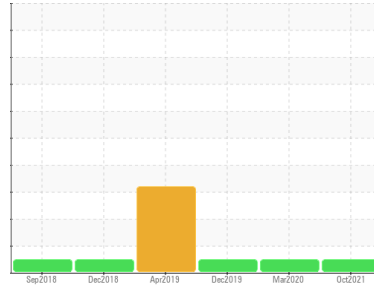




# OIL ANALYSIS REPORT

Sample Rating Trend



**NORMAL**



Area  
**PLANT**  
Machine Id  
**SEW-EURODRIVE CORR315-004 (S/N DRE100LC4BESHR1ES7RN)**  
Component  
**Gearbox**  
Fluid  
**GEAR OIL ISO 680 (2 GAL)**

## DIAGNOSIS

### Recommendation

Resample at the next service interval to monitor.

### Wear

All component wear rates are normal.

### Contamination

There is no indication of any contamination in the oil.

### Fluid Condition

The AN level is acceptable for this fluid. The condition of the oil is suitable for further service.

## SAMPLE INFORMATION

	method	limit/base	current	history1	history2
Sample Number	Client Info		<b>WC0578112</b>	WC0417961	WC0337958
Sample Date	Client Info		<b>18 Oct 2021</b>	20 Mar 2020	09 Dec 2019
Machine Age	mths	Client Info	<b>0</b>	0	0
Oil Age	mths	Client Info	<b>0</b>	12	11
Oil Changed	Client Info		<b>N/A</b>	Not Changd	Not Changd
Sample Status			<b>NORMAL</b>	NORMAL	NORMAL

## CONTAMINATION

	method	limit/base	current	history1	history2
Water	WC Method	>0.2	<b>NEG</b>	NEG	NEG

## WEAR METALS

	method	limit/base	current	history1	history2
Iron	ppm	ASTM D5185m >200	<b>8</b>	7	5
Chromium	ppm	ASTM D5185m >15	<b>0</b>	<1	0
Nickel	ppm	ASTM D5185m >15	<b>0</b>	0	0
Titanium	ppm	ASTM D5185m	<b>0</b>	0	0
Silver	ppm	ASTM D5185m	<b>&lt;1</b>	<1	0
Aluminum	ppm	ASTM D5185m >25	<b>0</b>	0	0
Lead	ppm	ASTM D5185m >100	<b>&lt;1</b>	0	2
Copper	ppm	ASTM D5185m >200	<b>&lt;1</b>	<1	<1
Tin	ppm	ASTM D5185m >25	<b>&lt;1</b>	0	2
Antimony	ppm	ASTM D5185m	<b>97</b>	89	89
Vanadium	ppm	ASTM D5185m	<b>0</b>	0	0
Cadmium	ppm	ASTM D5185m	<b>0</b>	0	0

## ADDITIVES

	method	limit/base	current	history1	history2
Boron	ppm	ASTM D5185m 50	<b>5</b>	11	10
Barium	ppm	ASTM D5185m 15	<b>0</b>	0	0
Molybdenum	ppm	ASTM D5185m 15	<b>0</b>	3	<1
Manganese	ppm	ASTM D5185m	<b>&lt;1</b>	0	<1
Magnesium	ppm	ASTM D5185m 50	<b>&lt;1</b>	0	0
Calcium	ppm	ASTM D5185m 50	<b>14</b>	13	13
Phosphorus	ppm	ASTM D5185m 350	<b>371</b>	330	336
Zinc	ppm	ASTM D5185m 100	<b>3</b>	2	3
Sulfur	ppm	ASTM D5185m 12500	<b>5279</b>	4919	1507

## CONTAMINANTS

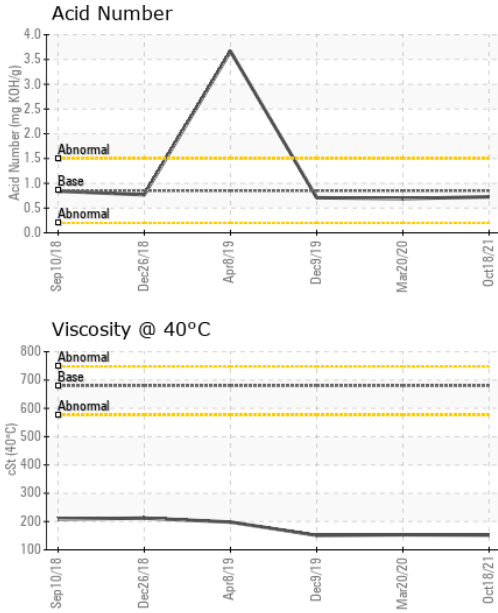
	method	limit/base	current	history1	history2
Silicon	ppm	ASTM D5185m >50	<b>2</b>	4	2
Sodium	ppm	ASTM D5185m	<b>0</b>	<1	0
Potassium	ppm	ASTM D5185m >20	<b>&lt;1</b>	4	<1

## FLUID DEGRADATION

	method	limit/base	current	history1	history2
Acid Number (AN)	mg KOH/g	ASTM D8045 0.85	<b>0.726</b>	0.692	0.709



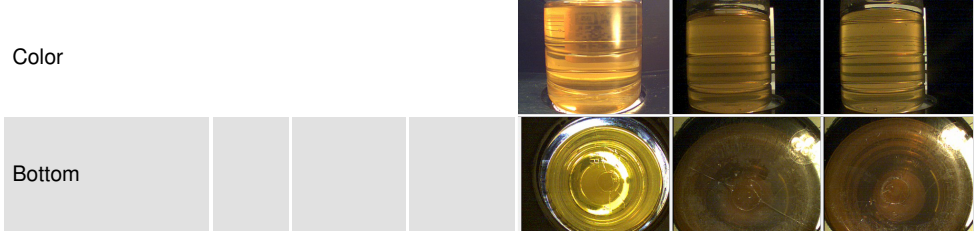
# OIL ANALYSIS REPORT



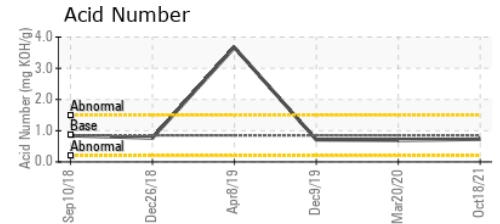
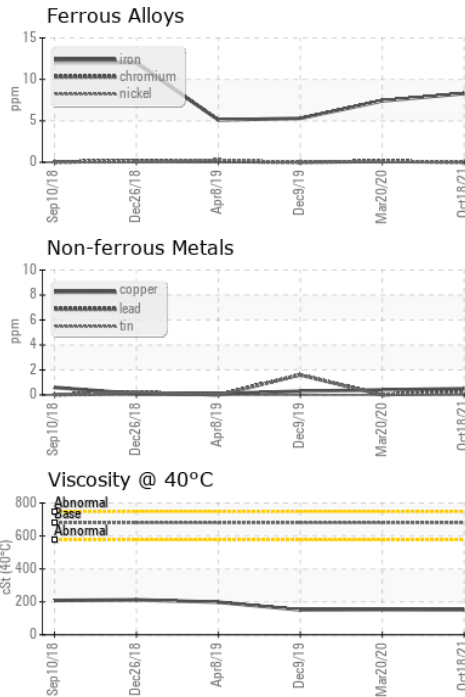
VISUAL	method	limit/base	current	history1	history2
White Metal	scalar	*Visual	NONE	NONE	NONE
Yellow Metal	scalar	*Visual	NONE	NONE	NONE
Precipitate	scalar	*Visual	NONE	NONE	NONE
Silt	scalar	*Visual	NONE	NONE	NONE
Debris	scalar	*Visual	NONE	NONE	NONE
Sand/Dirt	scalar	*Visual	NONE	NONE	NONE
Appearance	scalar	*Visual	NORML	NORML	NORML
Odor	scalar	*Visual	NORML	NORML	NORML
Emulsified Water	scalar	*Visual	>0.2	NEG	NEG
Free Water	scalar	*Visual		NEG	NEG

FLUID PROPERTIES	method	limit/base	current	history1	history2
Visc @ 40°C	cSt	ASTM D445 680	152	153	151

SAMPLE IMAGES	method	limit/base	current	history1	history2
---------------	--------	------------	---------	----------	----------



## GRAPHS



Certificate L2367

**Laboratory** : WearCheck USA - 501 Madison Ave., Cary, NC 27513  
**Sample No.** : WC0578112 **Received** : 21 Oct 2021  
**Lab Number** : 05379817 **Diagnosed** : 22 Oct 2021  
**Unique Number** : 9708945 **Diagnostician** : Jonathan Hester  
**Test Package** : IND 2

**PRINSCO - BERESFORD**  
 600 NORTH 16TH ST  
 BERESFORD, SD  
 US 57004  
 Contact: CHRIS SETNAR  
 christopher.setnar@prinsco.com

To discuss this sample report, contact Customer Service at 1-800-237-1369.

\* - Denotes test methods that are outside of the ISO 17025 scope of accreditation.

Statements of conformity to specifications are based on the simple acceptance decision rule (JCGM 106:2012)

T:  
F: