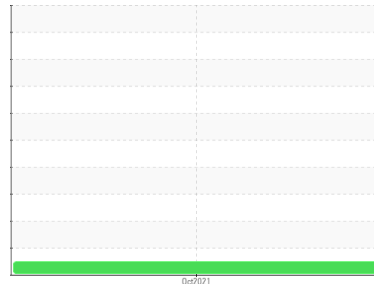




# COOLANT REPORT

Sample Rating Trend



**NORMAL**



Area

**KANSAS/44/EG - OTHER SERVICE**

Machine Id

**64.09W [KANSAS^44^EG - OTHER SERVICE]**

Component

**Coolant**

Fluid

**EXTENDED LIFE COOLANT (--- GAL)**

## DIAGNOSIS

### Recommendation

The fluid is suitable for further service.

### Corrosion

All metal levels are normal indicating no corrosion in the cooling system.

### Contaminants

There is no indication of any contamination in the coolant.

### Coolant Condition

The carboxylate level of this fluid is acceptable. The glycol level is acceptable. The pH level of this fluid is within the acceptable limits.

## SAMPLE INFORMATION

	method	limit/base	current	history1	history2
Sample Number	Client Info		<b>WC05382585</b>	---	---
Sample Date	Client Info		<b>13 Oct 2021</b>	---	---
Machine Age	hrs	Client Info	<b>513</b>	---	---
Oil Age	hrs	Client Info	<b>0</b>	---	---
Oil Changed	Client Info		<b>N/A</b>	---	---
Sample Status			<b>NORMAL</b>	---	---

## PHYSICAL TEST RESULTS

	method	limit/base	current	history1	history2
pH	Scale 0-14	ASTM D1287	<b>7.52</b>	---	---
Nitrites	ppm	AP-053:2009	<b>524</b>	---	---
Reserve Alkalinity	Scale 0-20	*ASTM D1121	<b>---</b>	---	---
Percentage Glycol	%	ASTM D3321	<b>51</b>	---	---
Freezing Point	°F	ASTM D3321	<b>-40</b>	---	---
Total Dissolved Solids			<b>344.5</b>	---	---
Carboxylate			<b>pass</b>	---	---

## CORROSION INHIBITORS

	method	limit/base	current	history1	history2
Silicon	ppm	ASTM D6130	<b>21</b>	---	---
Phosphorus	ppm	ASTM D6130	<b>&lt;1</b>	---	---
Boron	ppm	ASTM D6130	<b>&lt;1</b>	---	---
Molybdenum	ppm	ASTM D6130	<b>832</b>	---	---

## CORROSION

	method	limit/base	current	history1	history2
Iron	ppm	ASTM D6130	>15	<b>&lt;1</b>	---
Aluminum	ppm	ASTM D6130	>10	<b>2</b>	---
Copper	ppm	ASTM D6130	>10	<b>5</b>	---
Lead	ppm	ASTM D6130	>10	<b>&lt;1</b>	---
Tin	ppm	ASTM D6130	>10	<b>&lt;1</b>	---
Zinc	ppm	ASTM D6130		<b>5</b>	---

## CONTAMINANTS

	method	limit/base	current	history1	history2
Chlorine	ppm	ASTM D6130		<b>39</b>	---

## CARRIER SALTS

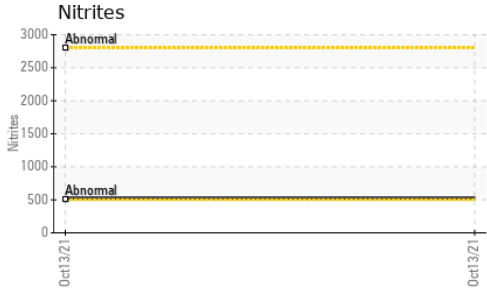
	method	limit/base	current	history1	history2
Sodium	ppm	ASTM D6130		<b>4276</b>	---
Potassium	ppm	ASTM D6130		<b>89</b>	---

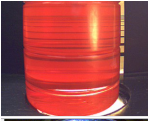

## SCALE POTENTIAL

	method	limit/base	current	history1	history2
Calcium	ppm	ASTM D6130		<b>6</b>	---
Magnesium	ppm	ASTM D6130		<b>3</b>	---

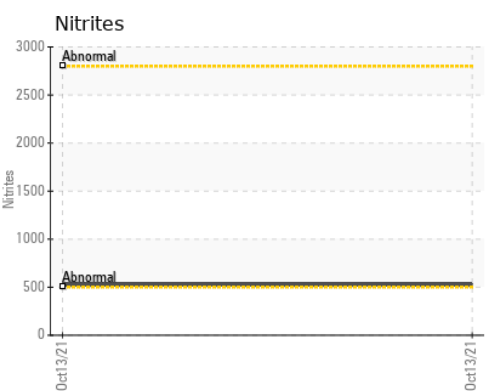
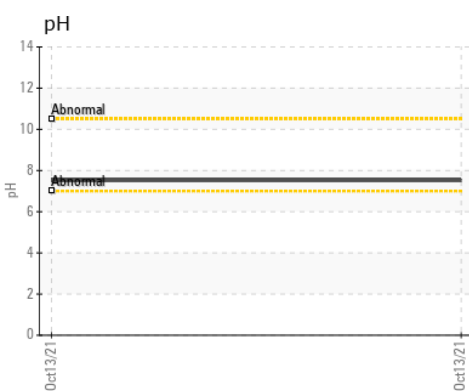
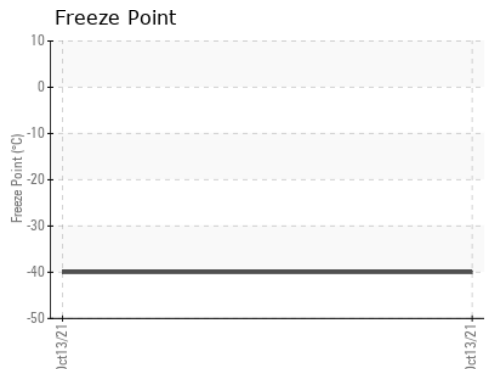
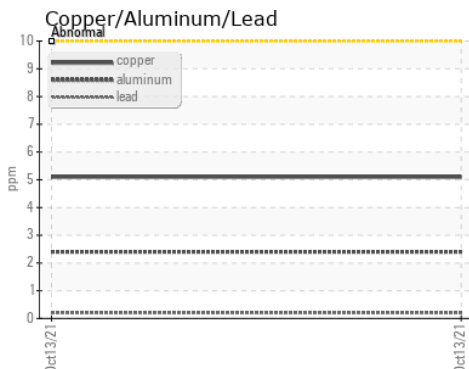
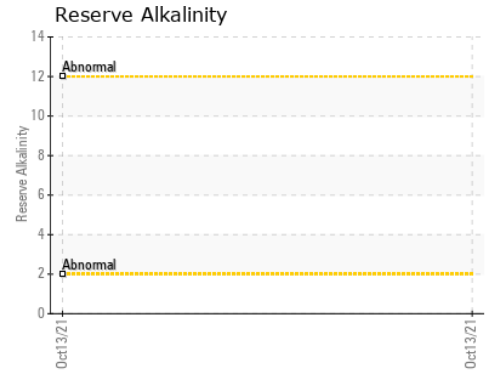
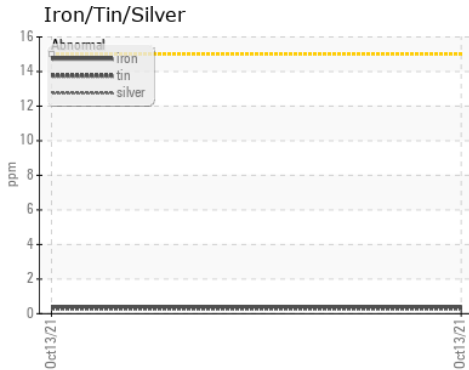


# COOLANT REPORT



VISUAL	method	limit/base	current	history1	history2
Coolant Color	*Visual		<b>Orange</b>	---	---
Coolant Appearance	*Visual	Clear	<b>normal</b>	---	---
Color				no image	no image
Bottom				no image	no image

## GRAPHS



**Laboratory** : WearCheck USA - 501 Madison Ave., Cary, NC 27513  
**Sample No.** : WC05382585      **Received** : 25 Oct 2021  
**Lab Number** : **05382585**      **Tested** : 27 Oct 2021  
**Unique Number** : 9711713      **Diagnosed** : 27 Oct 2021 - Doug Bogart  
**Test Package** : COOL- ( Additional Tests: COOL, ICP )

**SHERWOOD CONSTRUCTION CO INC**  
 3219 WEST MAY ST  
 WICHITA, KS  
 US 67213  
 Contact: DOUG KING  
 doug.king@sherwood.net  
 T: (316)617-3161  
 F: x:

To discuss this sample report, contact Customer Service at 1-800-237-1369.  
 \* - Denotes test methods that are outside of the ISO 17025 scope of accreditation.  
 Statements of conformity to specifications are based on the simple acceptance decision rule (JCGM 106:2012)