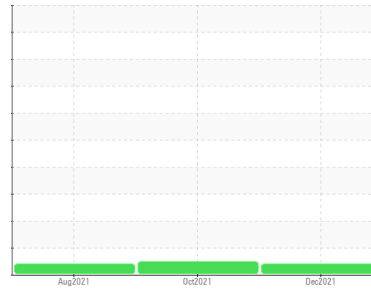




OIL ANALYSIS REPORT

Sample Rating Trend



ISO



Area
HER SON
 Machine Id
Schott Mexico AG INY-1
 Component
Hydraulic System
 Fluid
TEXACO RANDO OIL HD 46 (1200 LTR)

DIAGNOSIS

Recommendation

No corrective action is recommended at this time. Resample at the next service interval to monitor.

Wear

All component wear rates are normal.

Contamination

There is a high amount of silt (particulates < 14 microns in size) present in the oil.

Fluid Condition

The AN level is acceptable for this fluid. The condition of the oil is suitable for further service.

SAMPLE INFORMATION

	method	limit/base	current	history1	history2
Sample Number	Client Info		KL05415301	KL0006811	KL0006803
Sample Date	Client Info		05 Dec 2021	04 Oct 2021	03 Aug 2021
Machine Age	mths	Client Info	0	0	0
Oil Age	mths	Client Info	0	6	5
Oil Changed	Client Info		N/A	Not Changd	Not Changd
Sample Status			ABNORMAL	NORMAL	ABNORMAL

WEAR METALS

	method	limit/base	current	history1	history2
Iron	ppm	ASTM D5185m >20	0	0	<1
Chromium	ppm	ASTM D5185m >10	0	0	0
Nickel	ppm	ASTM D5185m	0	0	0
Titanium	ppm	ASTM D5185m	0	0	0
Silver	ppm	ASTM D5185m	0	0	0
Aluminum	ppm	ASTM D5185m >10	<1	<1	0
Lead	ppm	ASTM D5185m >10	0	2	0
Copper	ppm	ASTM D5185m >75	<1	0	0
Tin	ppm	ASTM D5185m >10	0	0	0
Antimony	ppm	ASTM D5185m	0	0	0
Vanadium	ppm	ASTM D5185m	0	0	0
Cadmium	ppm	ASTM D5185m	0	0	0

ADDITIVES

	method	limit/base	current	history1	history2
Boron	ppm	ASTM D5185m 0.2	0	0	0
Barium	ppm	ASTM D5185m 0	0	0	0
Molybdenum	ppm	ASTM D5185m 0	0	0	0
Manganese	ppm	ASTM D5185m	0	0	0
Magnesium	ppm	ASTM D5185m 0	0	0	0
Calcium	ppm	ASTM D5185m 49	36	38	40
Phosphorus	ppm	ASTM D5185m 247	335	331	334
Zinc	ppm	ASTM D5185m 323	436	438	403
Sulfur	ppm	ASTM D5185m 4717	745	737	717

CONTAMINANTS

	method	limit/base	current	history1	history2
Silicon	ppm	ASTM D5185m >20	0	0	<1
Sodium	ppm	ASTM D5185m	0	0	<1
Potassium	ppm	ASTM D5185m >20	0	0	2

FLUID CLEANLINESS

	method	limit/base	current	history1	history2
Particles >4µm	ASTM D7647		102346	22960	119894
Particles >6µm	ASTM D7647	>1300	▲ 2624	791	▲ 4361
Particles >14µm	ASTM D7647	>160	25	24	20
Particles >21µm	ASTM D7647	>40	6	7	2
Particles >38µm	ASTM D7647	>10	0	0	0
Particles >71µm	ASTM D7647	>3	0	0	0
Oil Cleanliness	ISO 4406 (c)	>17/14	▲ 19/12	17/12	▲ 19/11

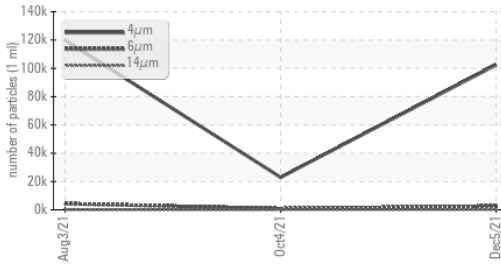
FLUID DEGRADATION

	method	limit/base	current	history1	history2
Acid Number (AN)	mg KOH/g	ASTM D8045	0.383	0.316	0.364

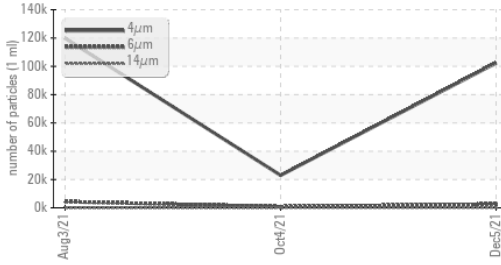


OIL ANALYSIS REPORT

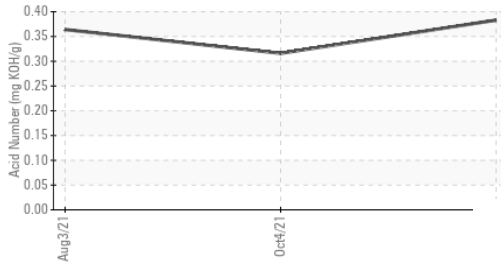
▲ Particle Trend



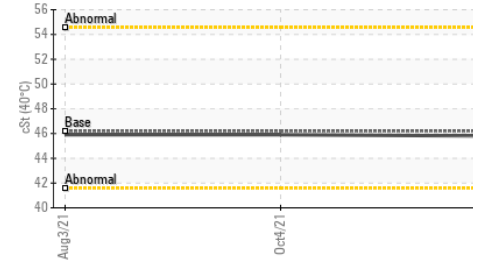
▲ Particle Trend



Acid Number



Viscosity @ 40°C

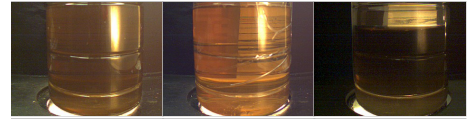


VISUAL	method	limit/base	current	history1	history2
White Metal	scalar	*Visual	NONE	NONE	NONE
Yellow Metal	scalar	*Visual	NONE	NONE	NONE
Precipitate	scalar	*Visual	NONE	NONE	NONE
Silt	scalar	*Visual	NONE	NONE	NONE
Debris	scalar	*Visual	NONE	NONE	NONE
Sand/Dirt	scalar	*Visual	NONE	NONE	NONE
Appearance	scalar	*Visual	NORML	NORML	NORML
Odor	scalar	*Visual	NORML	NORML	NORML
Emulsified Water	scalar	*Visual	>0.1	NEG	NEG
Free Water	scalar	*Visual		NEG	NEG

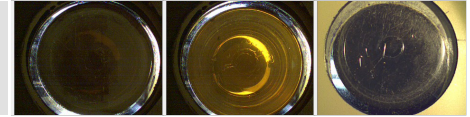
FLUID PROPERTIES	method	limit/base	current	history1	history2
Visc @ 40°C	cSt	ASTM D445	46.2	45.8	45.9

SAMPLE IMAGES	method	limit/base	current	history1	history2
---------------	--------	------------	---------	----------	----------

Color

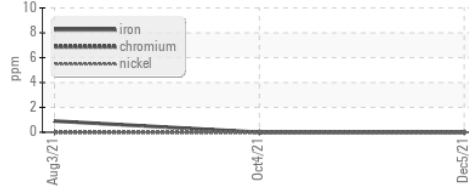


Bottom

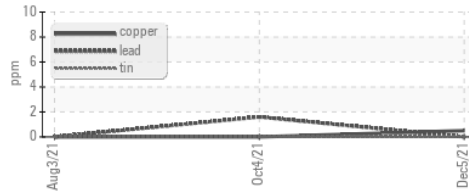


GRAPHS

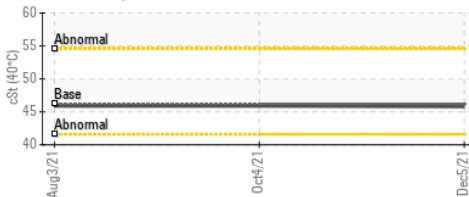
Ferrous Alloys



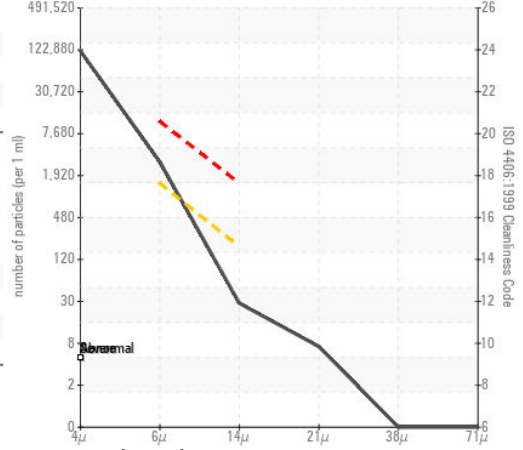
Non-ferrous Metals



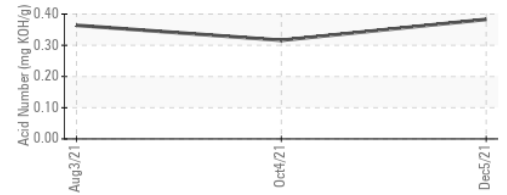
Viscosity @ 40°C



▲ Particle Count



Acid Number



Certificate L2367

Laboratory : WearCheck USA - 501 Madison Ave., Cary, NC 27513
 Sample No. : KL05415301
 Lab Number : 05415301
 Unique Number : 9764489
 Test Package : MOB 2

Received : 06 Dec 2021
 Diagnosed : 09 Dec 2021
 Diagnostician : Doug Bogart

To discuss this sample report, contact Customer Service at 1-800-237-1369.

* - Denotes test methods that are outside of the ISO 17025 scope of accreditation.

Statements of conformity to specifications are based on the simple acceptance decision rule (JCGM 106:2012)

CONOR
 JUAREZ 348
 HERMOSILLO,
 MX 83140

Contact: EDUARDO GARCIA
 egarcia.comsa@gmail.com

T: (526)622-1581 x:81

F: x: