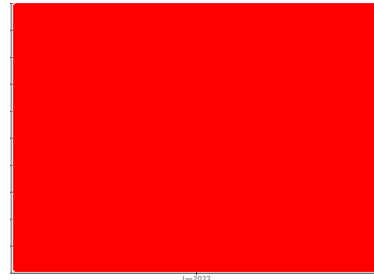




COOLANT REPORT

Sample Rating Trend



WEAR



Area
MARYNEAL [200006807]
 Machine Id
87027 SITE 32
 Component
Coolant
 Fluid
ISENTHAL VARIDOS 45 (--- LTR)

DIAGNOSIS

▲ Recommendation

We advise that you inspect for the source(s) of wear. We recommend an early resample to monitor this condition.

▲ Corrosion

Metal levels are abnormal indicating corrosion in the cooling system.

Contaminants

There is no indication of any contamination in the coolant.

Coolant Condition

Glycol and nitrite levels are acceptable. The pH level of this fluid is within the acceptable limits.

SAMPLE INFORMATION

| | method | limit/base | current | history1 | history2 |
|---------------|-------------|-------------|--------------------|----------|----------|
| Sample Number | Client Info | | NX009337 | --- | --- |
| Sample Date | Client Info | | 10 Jan 2022 | --- | --- |
| Machine Age | hrs | Client Info | 0 | --- | --- |
| Oil Age | hrs | Client Info | 0 | --- | --- |
| Oil Changed | Client Info | | N/A | --- | --- |
| Sample Status | | | SEVERE | --- | --- |

PHYSICAL TEST RESULTS

| | method | limit/base | current | history1 | history2 |
|------------------------|------------|-------------|---------|--------------|----------|
| pH | Scale 0-14 | ASTM D1287 | 8.5 | 8.61 | --- |
| Nitrites | ppm | AP-053:2009 | 260 | 184 | --- |
| Reserve Alkalinity | Scale 0-20 | *ASTM D1121 | | --- | --- |
| Percentage Glycol | % | ASTM D3321 | 45 | 43 | --- |
| Freezing Point | °F | ASTM D3321 | -24 | -22 | --- |
| Total Dissolved Solids | | | | 150.0 | --- |
| Carboxylate | | | | n/a | --- |

CORROSION INHIBITORS

| | method | limit/base | current | history1 | history2 |
|------------|--------|------------|---------|-------------|----------|
| Silicon | ppm | ASTM D6130 | 25 | 34 | --- |
| Phosphorus | ppm | ASTM D6130 | 140 | 117 | --- |
| Boron | ppm | ASTM D6130 | 0 | 4 | --- |
| Molybdenum | ppm | ASTM D6130 | 1075 | 1026 | --- |

CORROSION

| | method | limit/base | current | history1 | history2 |
|----------|--------|------------|---------|--------------|----------|
| Iron | ppm | ASTM D6130 | >15 | ▲ 121 | --- |
| Aluminum | ppm | ASTM D6130 | >10 | ▲ 128 | --- |
| Copper | ppm | ASTM D6130 | >10 | <1 | --- |
| Lead | ppm | ASTM D6130 | >10 | 1 | --- |
| Tin | ppm | ASTM D6130 | >10 | <1 | --- |
| Zinc | ppm | ASTM D6130 | | 26 | --- |

CONTAMINANTS

| | method | limit/base | current | history1 | history2 |
|----------|--------|------------|---------|-----------|----------|
| Chlorine | ppm | ASTM D6130 | | 77 | --- |

CARRIER SALTS

| | method | limit/base | current | history1 | history2 |
|-----------|--------|------------|---------|------------|----------|
| Sodium | ppm | ASTM D6130 | 1075 | 691 | --- |
| Potassium | ppm | ASTM D6130 | 5 | 616 | --- |

SCALE POTENTIAL

| | method | limit/base | current | history1 | history2 |
|-----------|--------|------------|---------|----------|----------|
| Calcium | ppm | ASTM D6130 | | 8 | --- |
| Magnesium | ppm | ASTM D6130 | | 3 | --- |

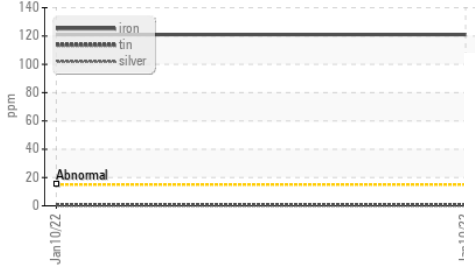


COOLANT REPORT

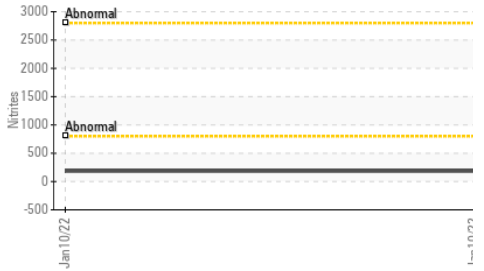
▲ Copper/Aluminum/Lead



▲ Iron/Tin/Silver



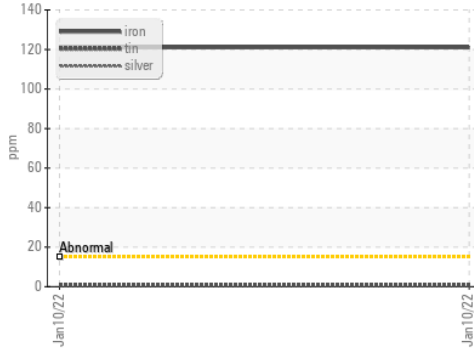
Nitrites



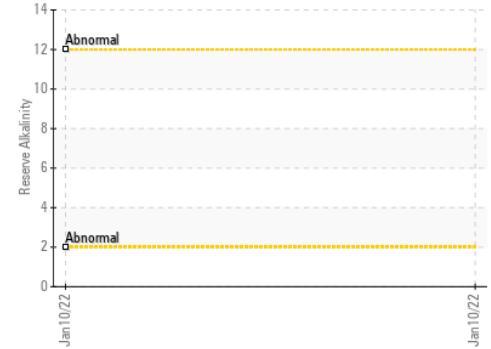
| VISUAL | method | limit/base | current | history1 | history2 |
|--------------------|---------|------------|---------------|----------|----------|
| Coolant Color | *Visual | DkYlw | DkYlw | --- | --- |
| Coolant Appearance | *Visual | Clear | normal | --- | --- |
| Color | | | | no image | no image |
| Bottom | | | | no image | no image |

GRAPHS

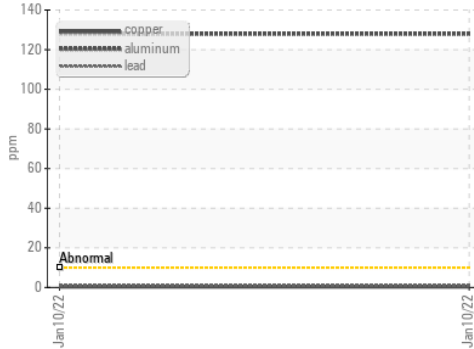
▲ Iron/Tin/Silver



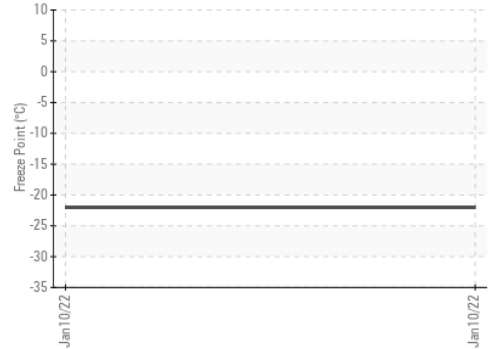
Reserve Alkalinity



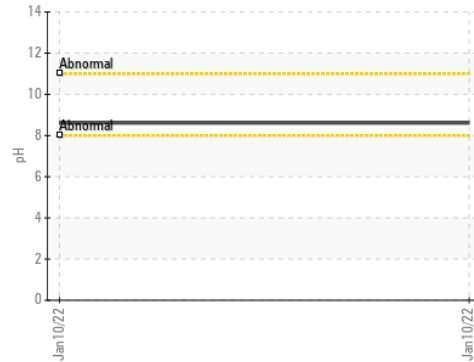
▲ Copper/Aluminum/Lead



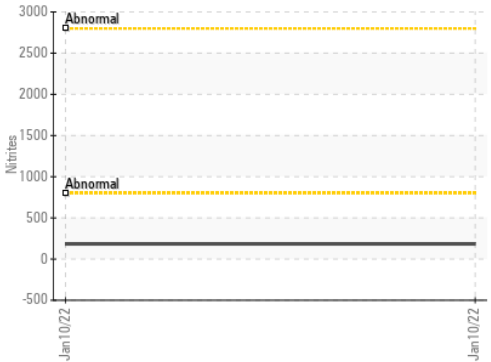
Freeze Point



pH



Nitrites



Certificate L2367

Laboratory : WearCheck USA - 501 Madison Ave., Cary, NC 27513

Sample No. : NX009337

Lab Number : 05457565

Unique Number : 9831760

Test Package : COOL- (Additional Tests: COOL, ICP)

To discuss this sample report, contact Customer Service at 1-800-237-1369.

* - Denotes test methods that are outside of the ISO 17025 scope of accreditation.

Statements of conformity to specifications are based on the simple acceptance decision rule (JCGM 106:2012)

Received : 01 Feb 2022

Tested : 07 Feb 2022

Diagnosed : 07 Feb 2022 - Doug Bogart

NORDEX USA - Chicago

300 SOUTH WACKER DRIVE, SUITE 1500

CHICAGO, IL

US 60606

Contact: DEVIN LINEHAN

DLinehan@nordex-online.com

T: (312)386-4124

F: (312)386-7102