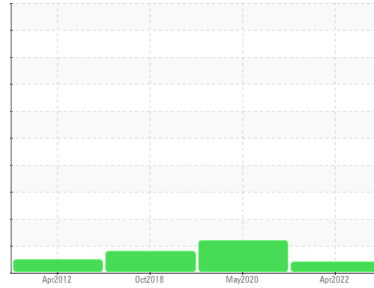




OIL ANALYSIS REPORT

Sample Rating Trend



NORMAL



Area
RO NFDM
 Machine Id
RO01PP03BB01
 Component
Bearing
 Fluid
 {not provided} (--- GAL)

DIAGNOSIS

Recommendation

Resample at the next service interval to monitor.

Wear

All component wear rates are normal.

Contamination

There is no indication of any contamination in the component.

Fluid Condition

The condition of the oil is acceptable for the time in service.

SAMPLE INFORMATION

	method	limit/base	current	history1	history2
Sample Number	Client Info		WC0685585	WC0458011	WC11107683
Sample Date	Client Info		20 Apr 2022	06 May 2020	21 Oct 2018
Machine Age	Client Info		0	0	0
Oil Age	Client Info		0	0	0
Oil Changed	Client Info		N/A	N/A	N/A
Sample Status			MARGINAL	ABNORMAL	ABNORMAL

WEAR METALS

	method	limit/base	current	history1	history2
Iron	ppm	ASTM D5185m >20	<1	4	3
Chromium	ppm	ASTM D5185m >20	0	0	0
Nickel	ppm	ASTM D5185m >20	0	0	0
Titanium	ppm	ASTM D5185m	0	0	0
Silver	ppm	ASTM D5185m	<1	0	0
Aluminum	ppm	ASTM D5185m >20	<1	<1	0
Lead	ppm	ASTM D5185m >20	<1	<1	<1
Copper	ppm	ASTM D5185m >20	1	▲ 56	▲ 49
Tin	ppm	ASTM D5185m >20	<1	<1	0
Antimony	ppm	ASTM D5185m	---	0	0
Vanadium	ppm	ASTM D5185m	0	0	0
Cadmium	ppm	ASTM D5185m	0	0	0

ADDITIVES

	method	limit/base	current	history1	history2
Boron	ppm	ASTM D5185m	0	<1	<1
Barium	ppm	ASTM D5185m	0	0	0
Molybdenum	ppm	ASTM D5185m	0	0	0
Manganese	ppm	ASTM D5185m	0	0	0
Magnesium	ppm	ASTM D5185m	0	0	0
Calcium	ppm	ASTM D5185m	3	96	104
Phosphorus	ppm	ASTM D5185m	424	511	448
Zinc	ppm	ASTM D5185m	1	578	518
Sulfur	ppm	ASTM D5185m	242	5414	6952

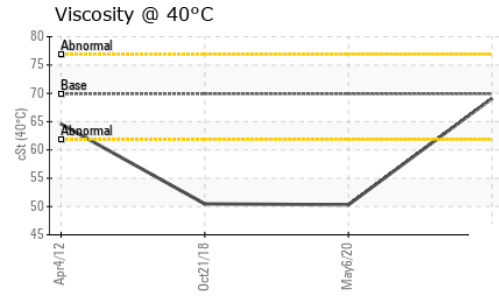
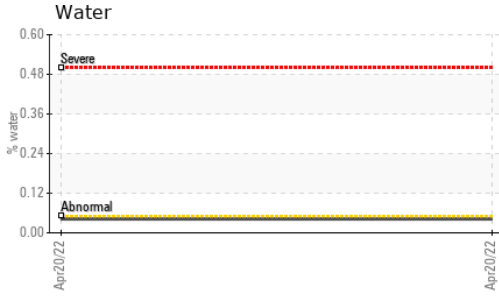
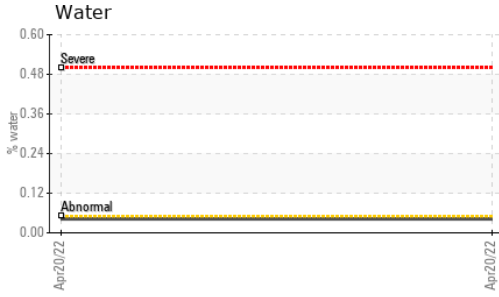
CONTAMINANTS

	method	limit/base	current	history1	history2
Silicon	ppm	ASTM D5185m >15	<1	<1	<1
Sodium	ppm	ASTM D5185m	<1	1	<1
Potassium	ppm	ASTM D5185m >20	0	<1	<1
Water	%	ASTM D6304 >0.05	0.042	---	---
ppm Water	ppm	ASTM D6304 >500	420	---	---

FLUID DEGRADATION

	method	limit/base	current	history1	history2
Acid Number (AN)	mg KOH/g	ASTM D8045	0.31	---	---

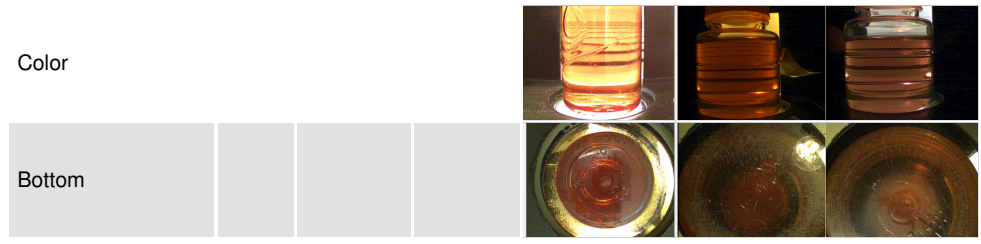
OIL ANALYSIS REPORT



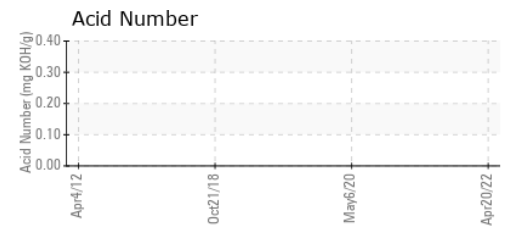
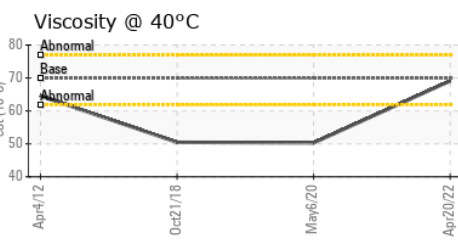
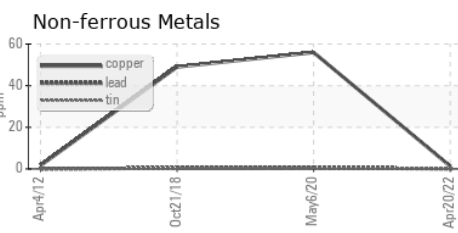
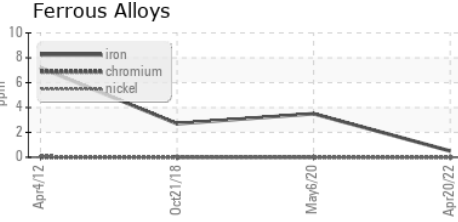
VISUAL	method	limit/base	current	history1	history2
White Metal	scalar	*Visual	NONE	NONE	NONE
Yellow Metal	scalar	*Visual	NONE	NONE	NONE
Precipitate	scalar	*Visual	NONE	NONE	NONE
Silt	scalar	*Visual	NONE	NONE	NONE
Debris	scalar	*Visual	NONE	▲ MODER	▲ MODER
Sand/Dirt	scalar	*Visual	NONE	NONE	NONE
Appearance	scalar	*Visual	NORML	NORML	NORML
Odor	scalar	*Visual	NORML	NORML	NORML
Emulsified Water	scalar	*Visual	>0.05	0.2%	NEG
Free Water	scalar	*Visual		NEG	NEG

FLUID PROPERTIES	method	limit/base	current	history1	history2
Visc @ 40°C	cSt	ASTM D445	69.9	69.1	50.3

SAMPLE IMAGES	method	limit/base	current	history1	history2
---------------	--------	------------	---------	----------	----------



GRAPHS



Laboratory : WearCheck USA - 501 Madison Ave., Cary, NC 27513
Sample No. : WC11010633 **Received** : 23 Apr 2012
Lab Number : 03057689 **Diagnosed** : 24 Apr 2012
Unique Number : 5894776 **Diagnostician** : Doug Bogart
Test Package : IND 1

LEPRINO FOODS-GREELEY
 1302 1ST AVE
 GREELEY, CO
 US 80631-5909
 Contact: CRISTA HOLDEN
 cholden@hairsair.com
 T: (515)232-4310
 F: (970)347-5190

To discuss this sample report, contact Customer Service at 1-800-237-1369.
 * - Denotes test methods that are outside of the ISO 17025 scope of accreditation.
 Statements of conformity to specifications are based on the simple acceptance decision rule (JCGM 106:2012)